

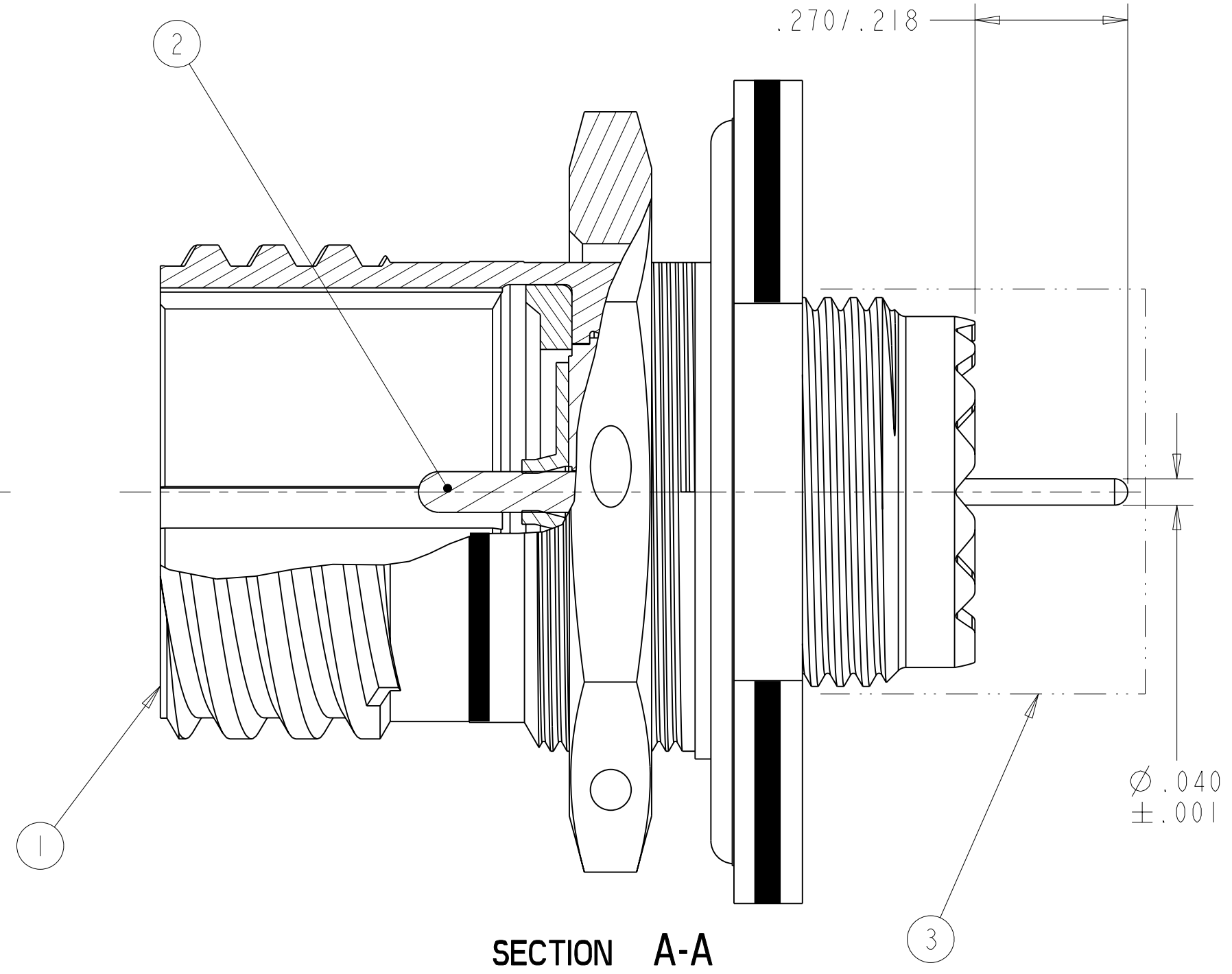
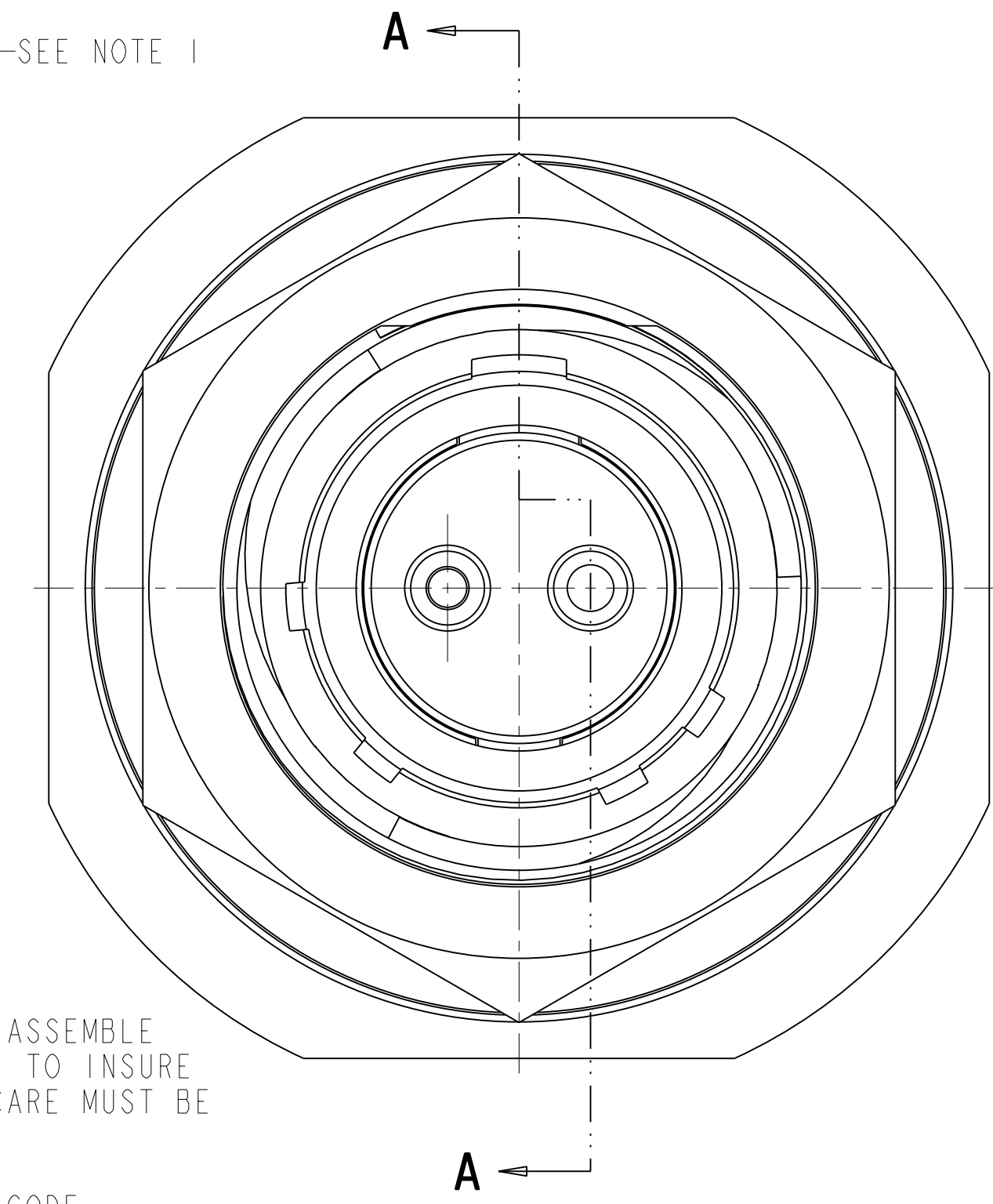
REV. A	SHEET 1 OF 1	DOCUMENT NO. 10-565997-839
REVISIONS		
LTR	DESCRIPTION	DATE
A	INITIAL RELEASE	

KIT PART NUMBER	CONNECTOR PART NUMBER	KIT TYPE	PCB PART NUMBER	QTY.	MS REF NUMBER	CAP PROTECTION
10-565997-839N	88-565752-02P	II	10-497695-015	2	D38999/24WB2AN	10-070506-10S
10-565997-839A	88-565752-02G				D38999/24WB2AA	
10-565997-839B	88-565752-02I				D38999/24WB2AB	
10-565997-839C	88-565752-02K				D38999/24WB2AC	
10-565997-839D	88-565752-02M				D38999/24WB2AD	
10-565997-839E	88-565752-02R				D38999/24WB2AE	

FOR UNIT ILLUSTRATION AND DIMENSIONAL DATA
SEE 10-536197-DS TYPE I

ALTERNATE SHELL ROTATION

CONNECTOR LESS STAMPING
SEE NOTE 4
FOR REQUIRED STAMPING



- AFTER CONTACTS HAVE BEEN INSTALLED, ASSEMBLE PROTECTION CAP TO REAR OF CONNECTOR. TO INSURE CAP LOCATION APPLY TAPE IF NEEDED. CARE MUST BE TAKEN NOT TO BEND THE CONTACTS!
- STAMP "AMPHENOL", PART NUMBER, DATE CODE (9-3895), AND LOT NUMBER PER 9-5788
EXAMPLE:
AMPHENOL 10-565997-839B 0828 001000
- PROCESS SPEC:
PROCESS SHEET CONTROL 9-4796
SPECIAL CONTROL 9-6000-5
9-3895, 9-5788
- PACKAGE PER PRODUCTION PROCESS SHEET.
- KIT TYPE I CONTACTS SHIPPED UNASSEMBLED.
KIT TYPE II CONTACTS SHIPPED ASSEMBLED IN CONNECTOR.

NOTES:

THE USE OF THIS DOCUMENT IS UNLIMITED. HOWEVER, DOCUMENTS REFERENCED HEREON MAY CONTAIN LIMITED RIGHTS DATA.

N/A	PRO/ENGINEER INFORMATION
N/A	Pro/e Model Used: 10-565997-539.ASSEM
N/A	Drawing Name: 10-565997-839
N/A	NEXT ASSEMBLY

UNLESS OTHERWISE SPECIFIED

LINEAR DIMENSIONS ARE IN INCHES
TOLERANCES:
.XXXX = ±.0005 ANGLES= ±2°
.XXX = ±.010
.XX = ±.03
.X = ±.1

DIM. & TOL. PER ASME Y14.5M;
DRM PER MIL-DTL-31000;
OTHER Amphenol Sds. PER 9-3800

LEGENDS:
= FLAG NOTE CALL OUT REFERENCE ONLY

SPECIFICATIONS

MATERIAL SPEC.
N/A

PROCESS SPEC.
SEE NOTE 3

POS	QTY	PART NUMBER	DESCRIPTION	NOTE
3	1	SEE TABLE	CAP	5
2		SEE TABLE	CONTACT	
1	1	SEE TABLE	CONNECTOR	

APPROVALS

PREPARED BY	D. ALGER	DATE	8-JULY-08
ENGINEER IN CHARGE	D. FREAR		
DESIGN MANAGER	E. SHEPLER		
DESIGN ACTIVITY GROUP	MILAERO		

THIRD ANGLE PROJECTION

AMPHENOL CORPORATION
40-60 DELAWARE AVENUE
SIDNEY, N.Y. 13838

KIT, CONNECTOR,
TYPE MS TV-AB STAMPING
JAM NUT

SIZE	CAGE CODE	DOCUMENT NO.	REV.
C	77820	10-565997-839	A

SCALE: 4.0 REF: 88-565750/759 SHEET 1 OF 1

10-565997-839

SHEET 1 OF 1

REV. A

C

B

A

FORMAT: C-U-L-R-V-B

D

C

REV. A

SHEET 1 OF 1

10-565997-839

A

U