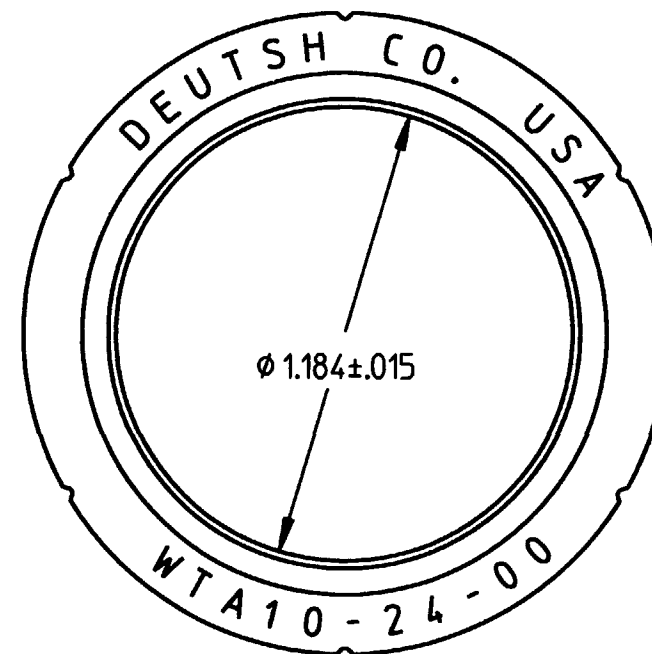
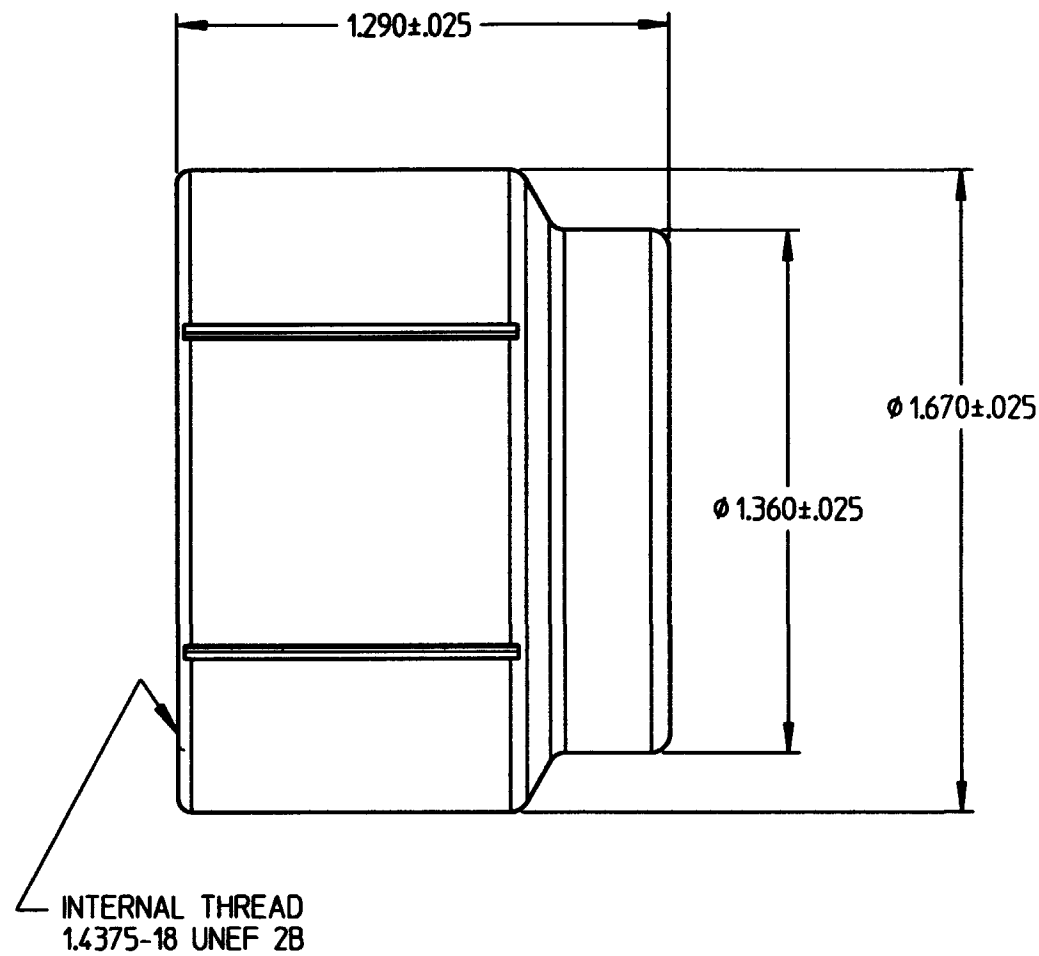


PROPERTY OF DEUTSCH E.C.D.
 This drawing contains proprietary information that shall not be disclosed, duplicated,
 nor used in whole or in part for any purpose other than to evaluate this drawing.

B 0805-202-2401

REVISIONS			
REV	DESCRIPTION	DATE	APPROVED
B	REVISED PER E.O. D1083	9/6/00	J.H.



- ALLISON PART NUMBER WTA10-24-01/22 REF.
- COUPLING NUT IS FOR 22 MM SPLIT CONVOLUTED TUBING.
- MATERIAL: HIGH GRADE PLASTIC (BLACK).
- ALL DIMENSIONS ARE IN INCHES UNLESS OTHERWISE SPECIFIED.

SIGNATURE & DATE	
DR	R. GROSS 11-1-94
CHK	Jo POWELL 11-9-94
FE	R. Dwyer 11-1-94
APPD	<i>[Signature]</i>
SCALE	NONE

COUPLING NUT
 ALLISON WTA10-24-00/22
 BACKSHELL SYSTEM
 SIZE 24
 FOR 22 MM TUBING

ENVELOPE

CP	MATL CODE
DEUTSCH ENGINEERED CONNECTING DEVICES 5733 W. Whittier Ave. Hemet, California	
A	0805-202-2401
CODE	SHEET 1 OF 1

0805-202-2401-env_A