



**Electrical Details**

Electrical Configuration	C Filter	
Capacitance Measurement	@ 1000hr Point	
Current Rating	10A	
Insulation Resistance (IR)	10GΩ or 1000ΩF	
Temperature Rating	-55°C to +125°C	
Ferrite Inductance (Typical)	Not Applicable	

**Mechanical Details**

Head Diameter	6.35mm (0.250")
Nut A/F	7.92mm (0.312")
Washer Diameter	9.40mm (0.370")
Mounting Torque	0.6Nm (5.31lbf in) max. if using nut 0.3Nm (2.65lbf in) max. into tapped hole
Mounting Hole Diameter	5.7mm ± 0.1 (0.224" ± 0.004")
Max. Panel Thickness	3.9mm (0.154")
Weight (Typical)	1.8g (0.06oz)
Finish	Silver plate on copper undercoat

Product Code	Capacitance (±20%) UOS	Dielectric	Rated Voltage (Vdc)	DWV (Vdc)	Typical No-Load Insertion Loss (dB)						
					0.01MHz	0.1MHz	1MHz	10MHz	100MHz	1GHz	
*SFCDC5000100ZC	10pF -20% / +80%	COG/NP0	500#	750	-	-	-	-	-	4	
SFCDC5000150ZC	15pF -20% / +80%				-	-	-	-	-	7	
SFCDC5000220ZC	22pF -20% / +80%				-	-	-	-	-	10	
SFCDC5000330ZC	33pF -20% / +80%				-	-	-	-	-	12	
*SFCDC5000470ZC	47pF -20% / +80%				-	-	-	-	1	15	
*SFCDC5000680MC	68pF				-	-	-	-	2	18	
*SFCDC5000101MC	100pF				-	-	-	-	4	22	
SFCDC5000151MC	150pF				-	-	-	-	7	25	
*SFCDC5000221MC	220pF				-	-	-	-	10	29	
*SFCDC5000331MC	330pF				-	-	-	-	19	33	
*SFCDC5000471MX	470pF				†X7R	-	-	-	1	16	35
SFCDC5000681MX	680pF					-	-	-	2	19	36
*SFCDC5000102MX	1.0nF	X7R			-	-	-	4	23	41	
SFCDC5000152MX	1.5nF				-	-	-	7	26	45	
*SFCDC5000222MX	2.2nF				-	-	-	10	30	50	
SFCDC5000332MX	3.3nF				-	-	-	13	33	52	
*SFCDC5000472MX	4.7nF				-	-	1	16	36	55	
SFCDC5000682MX	6.8nF				-	-	-	19	39	57	
*SFCDC5000103MX	10nF				-	-	4	22	41	60	
*SFCDC5000153MX	15nF				-	-	7	25	44	62	
*SFCDC5000223MX	22nF				-	-	10	29	46	65	
SFCDC5000333MX	33nF				-	-	13	33	48	68	
*SFCDC5000473MX	47nF				-	1	16	35	50	70	
SFCDC5000683MX	68nF				-	2	19	39	54	>70	
SFCDC5000104MX	100nF		-	4	22	41	57	>70			
SFCDC5000154MX	150nF		-	7	25	45	60	>70			
*SFCDC2000224MX	220nF		-	200	500	-	10	29	49	62	>70
SFCDC1000334MX	330nF		-	100	250	-	13	33	52	66	>70
*SFCDC1000474MX	470nF		1			16	35	55	68	>70	
SFCDC0500684MX	680nF		-	50	125	2	19	38	58	70	>70

# Also rated for operation at 115Vac 400Hz. Self heating will occur - evaluation in situ recommended. \* Recommended values. † Also available in COG/NP0.

**Ordering Information - SFCDC range**

SF	C	D	C	500	0102	M	X	0
Type	Case style	Thread	Electrical configuration	Voltage (dc)	Capacitance in picofarads (pF)	Tolerance	Dielectric	Nuts & Washers
Syfer Filter	6.35mm Hex Head	12-32 UNEF	C = C Filter	<b>050</b> = 50V <b>100</b> = 100V <b>200</b> = 200V <b>500</b> = 500V	First digit is 0. Second and third digits are significant figures of capacitance code. The fourth digit is number of zeros following Example: <b>0101</b> = 100pF <b>0332</b> = 3300pF	<b>M</b> = ±20% <b>Z</b> = -20+80%	<b>C</b> = COG/NP0 <b>X</b> = X7R	<b>0</b> = Without <b>1</b> = With

Note: The addition of a 4-digit numerical suffix code can be used to denote changes to the standard part. Options include for example: change of finish / alternative voltage rating / non-standard intermediate capacitance values / test requirements. Please refer specific requests to the factory.



Electrical Details	
Electrical Configuration	L-C Filter
Capacitance Measurement	@ 1000hr Point
Current Rating	10A
Insulation Resistance (IR)	10GΩ or 1000ΩF
Temperature Rating	-55°C to +125°C
Ferrite Inductance (Typical)	500nH
Mechanical Details	
Head Diameter	6.35mm (0.250")
Nut A/F	7.92mm (0.312")
Washer Diameter	9.40mm (0.370")
Mounting Torque	0.6Nm (5.31lbf in) max. if using nut 0.3Nm (2.65lbf in) max. into tapped hole
Mounting Hole Diameter	5.7mm ± 0.1 (0.224" ± 0.004")
Max. Panel Thickness	3.9mm (0.154")
Weight (Typical)	1.8g (0.06oz)
Finish	Silver plate on copper undercoat



Product Code	Capacitance (±20%) UOS	Dielectric	Rated Voltage (Vdc)	DWV (Vdc)	Typical No-Load Insertion Loss (dB)					
					0.01MHz	0.1MHz	1MHz	10MHz	100MHz	1GHz
*SFCDL5000100ZC	10pF -20% / +80%	COG/NPO	500#	750	-	-	-	-	-	6
SFCDL5000150ZC	15pF -20% / +80%				-	-	-	-	-	9
SFCDL5000220ZC	22pF -20% / +80%				-	-	-	-	-	12
SFCDL5000330ZC	33pF -20% / +80%				-	-	-	-	1	15
*SFCDL5000470ZC	47pF -20% / +80%				-	-	-	-	2	19
*SFCDL5000680MC	68pF				-	-	-	-	4	20
*SFCDL5000101MC	100pF				-	-	-	-	7	24
SFCDL5000151MC	150pF				-	-	-	-	10	27
*SFCDL5000221MC	220pF				-	-	-	-	12	30
*SFCDL5000331MC	330pF				-	-	-	1	16	34
*SFCDL5000471MX	470pF	†X7R	500#	750	-	-	-	2	19	38
SFCDL5000681MX	680pF				-	-	-	3	22	41
*SFCDL5000102MX	1.0nF	X7R	500#	750	-	-	-	6	25	44
SFCDL5000152MX	1.5nF				-	-	-	9	29	48
*SFCDL5000222MX	2.2nF				-	-	-	12	31	51
SFCDL5000332MX	3.3nF				-	-	-	15	35	54
*SFCDL5000472MX	4.7nF				-	-	1	18	39	57
SFCDL5000682MX	6.8nF				-	-	2	21	41	60
*SFCDL5000103MX	10nF				-	-	4	23	43	63
*SFCDL5000153MX	15nF				-	-	7	27	46	66
*SFCDL5000223MX	22nF				-	-	10	30	48	68
SFCDL5000333MX	33nF				-	-	13	34	50	70
*SFCDL5000473MX	47nF				-	1	17	37	51	>70
SFCDL5000683MX	68nF				-	2	20	40	55	>70
SFCDL5000104MX	100nF				-	4	22	44	60	>70
SFCDL5000154MX	150nF				-	7	25	47	62	>70
*SFCDL2000224MX	220nF				-	10	29	49	66	>70
SFCDL1000334MX	330nF				-	13	33	52	68	>70
*SFCDL1000474MX	470nF				-	16	35	55	>70	>70
SFCDL0500684MX	680nF				-	19	38	58	>70	>70

# Also rated for operation at 115Vac 400Hz. Self heating will occur - evaluation in situ recommended. \* Recommended values. † Also available in COG/NPO.

**Ordering Information - SFCDL range**

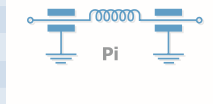
SF	C	D	L	500	0101	M	C	0
Type	Case style	Thread	Electrical configuration	Voltage (dc)	Capacitance in picofarads (pF)	Tolerance	Dielectric	Nuts & Washers
Syfer Filter	6.35mm Hex Head	12-32 UNEF	L = L-C Filter	<b>050</b> = 50V <b>100</b> = 100V <b>200</b> = 200V <b>500</b> = 500V	First digit is 0. Second and third digits are significant figures of capacitance code. The fourth digit is number of zeros following Example: <b>0101</b> = 100pF <b>0332</b> = 3300pF	<b>M</b> = ±20% <b>Z</b> = -20+80%	<b>C</b> = COG/NPO <b>X</b> = X7R	<b>0</b> = Without <b>1</b> = With

Note: The addition of a 4-digit numerical suffix code can be used to denote changes to the standard part. Options include for example: change of finish / alternative voltage rating / non-standard intermediate capacitance values / test requirements. Please refer specific requests to the factory.



**Electrical Details**

Electrical Configuration	Pi Filter
Capacitance Measurement	@ 1000hr Point
Current Rating	10A
Insulation Resistance (IR)	10GΩ or 1000ΩF
Temperature Rating	-55°C to +125°C
Ferrite Inductance (Typical)	250nH



**Mechanical Details**

Head Diameter	6.35mm (0.250")
Nut A/F	7.92mm (0.312")
Washer Diameter	9.40mm (0.370")
Mounting Torque	0.6Nm (5.31lbf in) max. if using nut 0.3Nm (2.65lbf in) max. into tapped hole
Mounting Hole Diameter	5.7mm ± 0.1 (0.224" ± 0.004")
Max. Panel Thickness	3.9mm (0.154")
Weight (Typical)	1.8g (0.06oz)
Finish	Silver plate on copper undercoat

Product Code	Capacitance (±20%) UOS	Dielectric	Rated Voltage (Vdc)	DWV (Vdc)	Typical No-Load Insertion Loss (dB)					
					0.01MHz	0.1MHz	1MHz	10MHz	100MHz	1GHz
*SFCDP5000200ZC	20pF -20% / +80%	COG/NP0	500#	750					1	11
SFCDP5000300ZC	30pF -20% / +80%								2	15
SFCDP5000440ZC	44pF -20% / +80%								3	19
SFCDP5000660ZC	66pF -20% / +80%								4	23
*SFCDP5000940ZC	94pF -20% / +80%								6	29
*SFCDP500136PMC	136pF								8	35
*SFCDP5000201MC	200pF								11	41
SFCDP5000301MC	300pF							1	15	50
*SFCDP5000441MC	440pF							2	20	57
*SFCDP5000661MC	660pF							3	25	65
*SFCDP5000941MX	940pF	+X7R	200	500				5	31	68
SFCDP5001N36MX	1.36nF	+X7R						7	37	>70
*SFCDP5000202MX	2nF	X7R						10	44	>70
SFCDP5000302MX	3nF							13	51	>70
*SFCDP5000442MX	4.4nF						1	17	59	>70
SFCDP5000662MX	6.6nF						2	21	64	>70
*SFCDP5000942MX	9.4nF						4	27	68	>70
SFCDP50013N6MX	13.6nF						6	34	>70	>70
*SFCDP5000203MX	20nF						9	40	>70	>70
*SFCDP5000303MX	30nF						12	48	>70	>70
*SFCDP5000443MX	44nF				1	14	54	>70	>70	
SFCDP5000663MX	66nF				2	17	63	>70	>70	
*SFCDP2000943MX	94nF		100	250	4	18	68	>70	>70	
SFCDP200136NMX	136nF				8	25	>70	>70	>70	
*SFCDP1000204MX	200nF		50	125	10	27	>70	>70	>70	
*SFCDP0500304MX	300nF				13	30	>70	>70	>70	

# Also rated for operation at 115Vac 400Hz. Self heating will occur - evaluation in situ recommended. \* Recommended values. † Also available in COG/NP0.

**Ordering Information - SFCDP range**

SF	C	D	P	200	0943	M	X	O
Type	Case style	Thread	Electrical configuration	Voltage (dc)	Capacitance in picofarads (pF)	Tolerance	Dielectric	Nuts & Washers
Syfer Filter	6.35mm Hex Head	12-32 UNEF	Pi = Pi Filter	050 = 50V 100 = 100V 200 = 200V 500 = 500V	First digit is 0. Second and third digits are significant figures of capacitance code. The fourth digit is number of zeros following Example: 0201 = 200pF 0943 = 9400pF	M = ±20% Z = -20+80%	C = COG/NP0 X = X7R	0 = Without 1 = With

Note: The addition of a 4-digit numerical suffix code can be used to denote changes to the standard part. Options include for example: change of finish / alternative voltage rating / non-standard intermediate capacitance values / test requirements. Please refer specific requests to the factory.