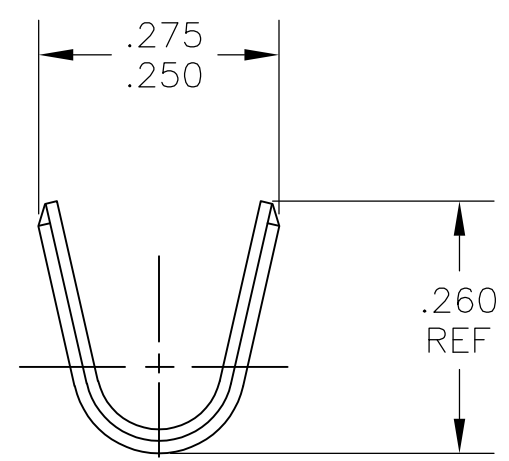
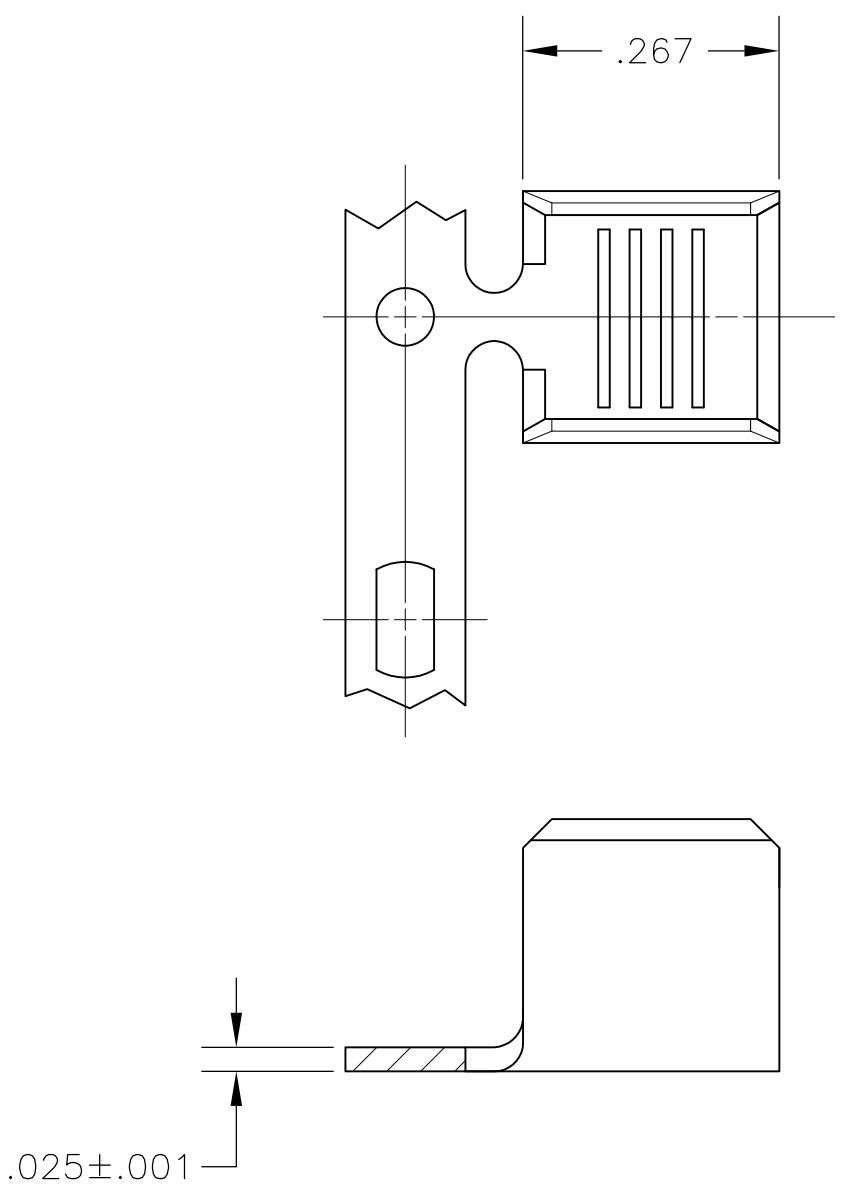


THIS DRAWING IS UNPUBLISHED. RELEASED FOR PUBLICATION
 © COPYRIGHT BY TYCO ELECTRONICS CORPORATION. ALL RIGHTS RESERVED.

LOC	DIST	REVISIONS			
P	LTR	DESCRIPTION	DATE	DWN	APVD
	C1	REVISED PER ECO-09-024717	04NOV09	KK	AEG

- 1 CONTINUOUS STRIP ON REEL.
 - 2 CRIMP WIDTH—.180, F TYPE
 - 3 CRIMP HEIGHT $\pm .002 = \frac{CMA+23100}{285700}$
 - 4 WIRE RANGE IS 8,500-14,000 CMA
- △5 OBSOLETE PARTS: OBSOLETE CIS STREAMLINING PER D.RENAUD/D.SINISI



△5 OBSOLETE	.000080 MIN TIN PLATE	1217967-2
		1217967-1
	FINISH	PART NO

THIS DRAWING IS A CONTROLLED DOCUMENT.		DWN jr_ruth 09JUN03	Tyco Electronics Corporation Harrisburg, Pa 17105-3608	
DIMENSIONS: INCHES	TOLERANCES UNLESS OTHERWISE SPECIFIED:	CHK G PORTA 09JUN03	NAME SPLICE	
	0 PLC ± -	APVD G PORTA 09JUN03	PRODUCT SPEC -	
	1 PLC ± -	APPLICATION SPEC	-	
	2 PLC ± .010	WEIGHT	SIZE A3	CAGE CODE 00779
	3 PLC ± -		DRAWING NO C-1217967	RESTRICTED TO -
	4 PLC ± -		SCALE 5:1	SHEET 1 OF 1
	ANGLES ± -		REV C1	
MATERIAL H04 BRASS	FINISH SEE TABLE	CUSTOMER DRAWING		