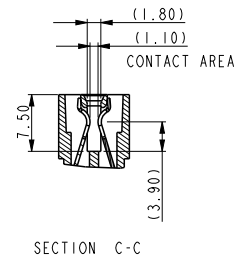
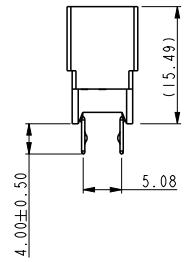
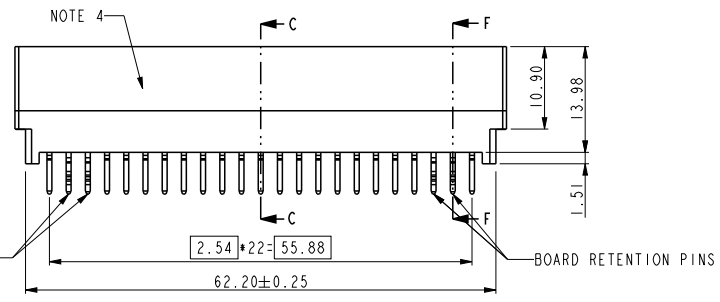
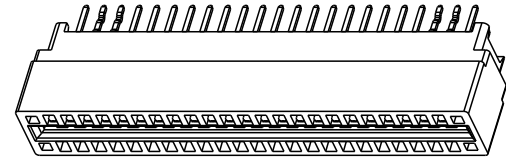
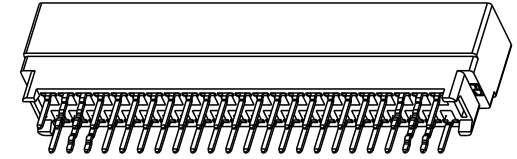
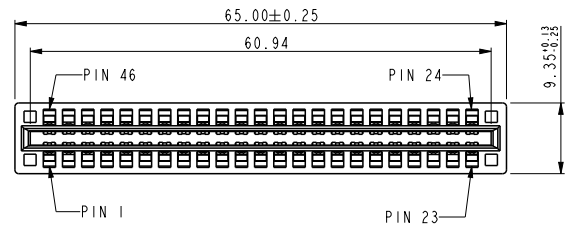


NOTE:
 1. Material:
 HOUSING: HIGH TEMPERATURE THERMOPLASTIC,
 UL 94 V-0 FLAME RETARDANT.
 TERMINAL: HIGH CONDUCTIVITY COPPER ALLOY.
 PLATING SPEC AS BELOW:
 Ni 50u" UNDER PLATED.
 Au 30u" OVER CONTACT AREA.(ONE SIDE)
 Matte Tin 120u" OVER SOLDERING AREA.)
 2. PACKING SPEC. GS-14-937.
 3. PRODUCT SPEC. GS-12-338.
 4. PART NUMBER SCHEME:(EX. 10046971-038 LF)
 LEAD FREE

5. PART NUMBER 10046971-038LF MEETS EUROPEAN UNION DIRECTIVE AND OTHER COUNTRY REGULATIONS AS DESCRIBED IN GS-22-008.
 THE HOUSING WILL WITHSTAND EXPOSURE TO 260°C PEAK TEMPERATURE FOR 10 SECONDS IN A WAVE SOLDER APPLICATION WITH A CIRCUIT BOARD.

REV	ECN NUMBER	REV'D BY	DATE
A	-	HZ	2012-01-02

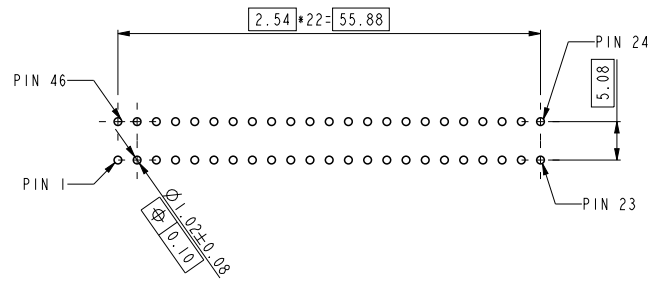


BOARD RETENTION PINS
SECTION F-F

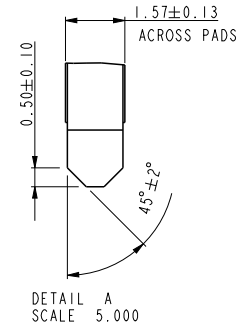


Copyright FCI.

spec ref	*	dr	Wei-Long Zhang	2011/12/07	projection	mm	size	A4	scale	1.000	
tolerance std	TOLERANCES UNLESS OTHERWISE SPECIFIED	eng	Wei-Long Zhang	2012/01/03			←→	ecn no	-	rel level	Released
		chr	Eleven Hu	2012/01/04							
surface	✓	appr	Pei-Ming Zheng	2012/01/04	product family	PEC	rev	10046971-038	A		
	linear										
	angular										
				title		POWER EDGE CONNECTOR OF		cat. no.		*	
		www.fci.com		VERTICAL TYPE (23PX2)		Product - Customer Drw		sheet 1 of 2			



RECOMMENDED PC BOARD LAYOUT
AND THE THICKNESS IS 3.18mm



DETAIL A
SCALE 5.000

spec ref	*	dr	Wei-Long Zhang	2011/12/07	projection 	mm ←→	size	A4	scale	1.000
tolerance std	TOLERANCES UNLESS OTHERWISE SPECIFIED	eng	Wei-Long Zhang	2012/01/03			ecn no	-		
		chr	Eleven Hu	2012/01/04						
surface	✓	appr	Pei-Ming Zheng	2012/01/04	product family	PEC	rel level	Released		
	linear	0.X	± 0.50		title	POWER EDGE CONNECTOR OF VERTICAL TYPE (23PX2)	dwg no	10046971-038	rev	A
		0.XX	± 0.25							
		0.XXX	± 0.13							
	angular	0°	± 2°	www.fci.com	cat. no.	*	Product - Customer Drw	sheet 2 of 2		

PrdE File - REV C - 2009-06-09



Copyright FCI.