

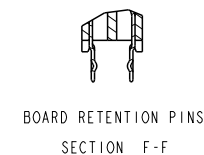
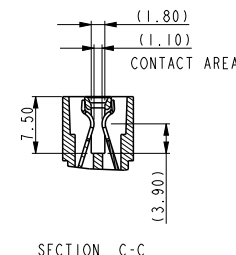
NOTE:

- Material:
 - HOUSING: HIGH TEMPERATURE THERMOPLASTIC, UL 94 V-0 FLAME RETARDANT.
 - TERMINAL: HIGH CONDUCTIVITY COPPER ALLOY. PLATING SPEC AS BELOW:
 - Ni 50u" UNDER PLATED.
 - Au 30u" OVER CONTACT AREA.(ONE SIDE)
 - Matte Tin 120u" OVER SOLDERING AREA.)
- PACKING SPEC. GS-14-937.
- PRODUCT SPEC. GS-12-338.
- PART NUMBER SCHEME:(EX. 10046971-038 LF)

LEAD FREE

5. PART NUMBER 10046971-038LF MEETS EUROPEAN UNION DIRECTIVE AND OTHER COUNTRY REGULATIONS AS DESCRIBED IN GS-22-008. THE HOUSING WILL WITHSTAND EXPOSURE TO 260°C PEAK TEMPERATURE FOR 10 SECONDS IN A WAVE SOLDER APPLICATION WITH A CIRCUIT BOARD.

REV	ECN NUMBER	REV'D BY	DATE
A	-	HZ	2012-01-02



Copyright FCI.

spec ref	*	dr	Wei-Long Zhang	2011/12/07	projection 	mm ←→	size	A4	scale	1.000		
tolerance std	TOLERANCES UNLESS OTHERWISE SPECIFIED	eng	Wei-Long Zhang	2012/01/03			product family	PEC	ecn no	-	rel level	Released
		chr	Eleven Hu	2012/01/04				product family	PEC	rel level		Released
surface	✓	appr	Pei-Ming Zheng	2012/01/04	title		POWER EDGE CONNECTOR OF VERTICAL TYPE (23PX2)		cat. no.	*		
	linear	0.X	± 0.50		www.fci.com	dwg no	10046971-038		rev	A		
	linear	0.XX	± 0.25				Product - Customer Drw	sheet 1 of 2				
	linear	0.XXX	± 0.13									
	angular	0°	± 2°	Product - Customer Drw		sheet 1 of 2						



RECOMMENDED PC BOARD LAYOUT
AND THE THICKNESS IS 3.18mm



Copyright FCI.

spec ref	*	dr	Wei-Long Zhang	2011/12/07	projection 	mm ←→	size	A4	scale	1.000	
tolerance std	TOLERANCES UNLESS OTHERWISE SPECIFIED	eng	Wei-Long Zhang	2012/01/03			ecn no	-			
		chr	Eleven Hu	2012/01/04							
surface	✓	appr	Pei-Ming Zheng	2012/01/04	product family	PEC	rel level	Released			
linear	0.X	± 0.50		title	POWER EDGE CONNECTOR OF VERTICAL TYPE (23PX2)			dwg no	10046971-038		rev
	0.XX	± 0.25									
0.XXX	± 0.13										
angular	0°	± 2°	www.fci.com	cat. no.	*	Product - Customer Drw	sheet 2 of 2				

PrdE File - REV C - 2009-06-09