



Quality Products. Service Excellence.

Modular Rack Mount Consoles 1564 Series

600 lbs|272 kg Weight Capacity



Features

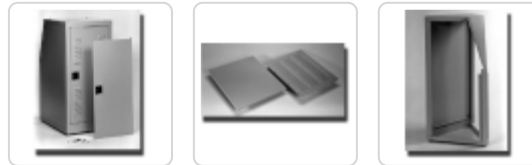
- Constructed in 14-gauge steel (frame) and 14-gauge steel (rails).
- Choice of two depths 24.5", 31.5" usable depth.
- Sloped panel height of 17.5" (10 U).
- Front panel height of 26.25" (15U).
- Finished in textured black powder paint.
- Tested to nearly double the suggested load rating of 600 lbs (272 kg).
- TAA Compliant.
- RoHS Compliant.
- Manufactured in North America.



Unit is Shipped Complete with

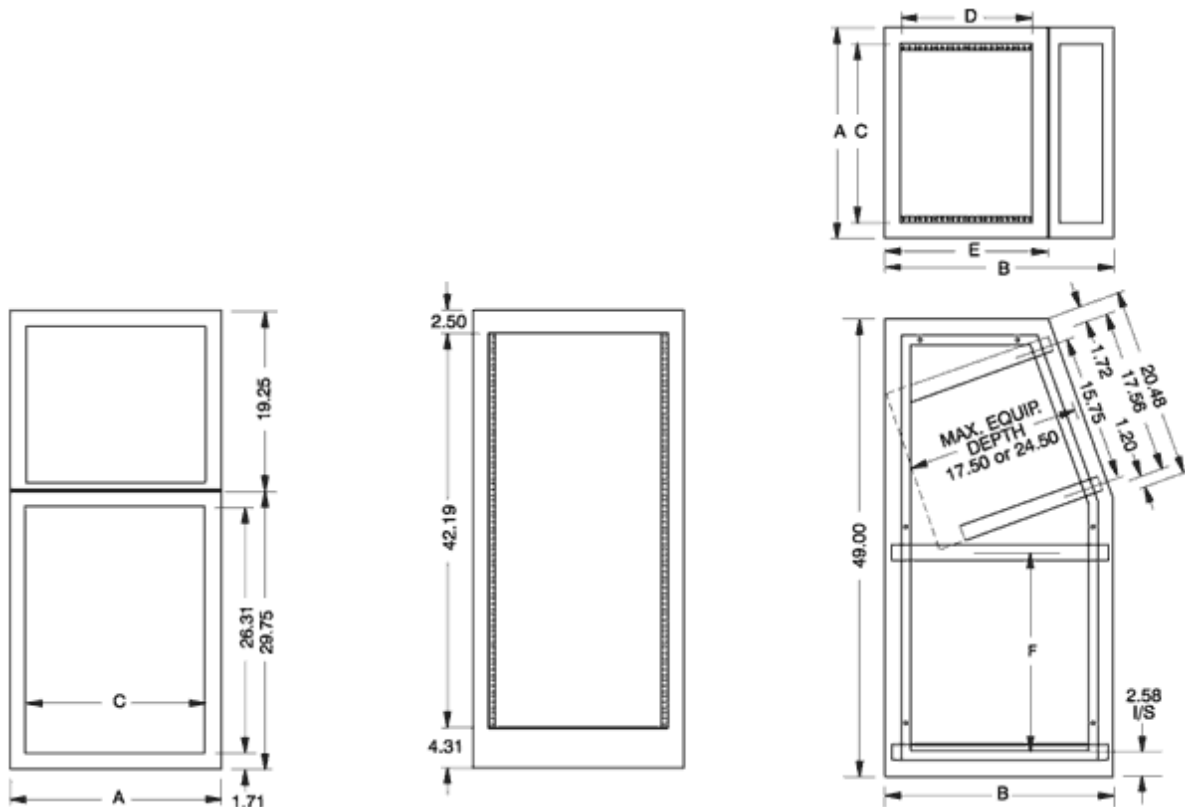
- Two (2) pairs of EIA compliant pre-installed upper and lower round hole punched mounting rails
 - Starter pack of **1421N25** clip nuts
- One (1) Set of four (4) leveling feet

Gallery



Accessories

- Rack Shelves
- Rack Panels
- Lite Duty Caster Set
- Equipment Cooling
- Outlet Strips
- Cable Management
- Mounting Rack Rails
- Mounting Hardware



1564 Frame and Side Panels

Frame Part No.	A	B	C	D	E	F	Side Panel Part No. (Sold As A Pair)
1564A2BK1	22.56	24.50	19.06	14.00	17.50	21.31	1564APBK1
1564B2BK1	22.56	31.50	19.06	21.00	24.50	19.56	1564BPK1

Side Panels Sold in Pairs

1564 Doors

Door Type	Front Door Part No.	Front Door with Desk Unit Option Part No.	Rear Door Part No.
Solid	RSDF19026BK1	RSDF19022BK1	RSDF19042BK1
Louvered	RSDL19026BK1	RSDL19022BK1	RSDL19042BK1

Doors are constructed of 18 gauge steel and feature lockable latch.

1564 Top Panels

Part No.	Top Panel	For Use With Frames
PBRs19014BK2	Solid	1564A2
PBRs19021BK2	Solid	1564B2
PVLK19014BK1	Louvered	1564A2
PVLK19021BK1	Louvered	1564B2

1564 Corner Wedges

Part No.	For Use With Frame
1564AW30BK1	1564A2
1564BW30BK1	1564B2
1564AW60BK1	1564A2
1564BW60BK1	1564B2

Data subject to change without notice

