



Quality Products. Service Excellence.

Modular Rack Mount Consoles 1564 Series

600 lbs|272 kg Weight Capacity



Features

- Constructed in 14-gauge steel (frame) and 14-gauge steel (rails).
- Choice of two depths 24.5", 31.5" usable depth.
- Sloped panel height of 17.5" (10 U).
- Front panel height of 26.25" (15U).
- Finished in textured black powder paint.
- Tested to nearly double the suggested load rating of 600 lbs (272 kg).
- TAA Compliant.
- RoHS Compliant.
- Manufactured in North America.



Unit is Shipped Complete with

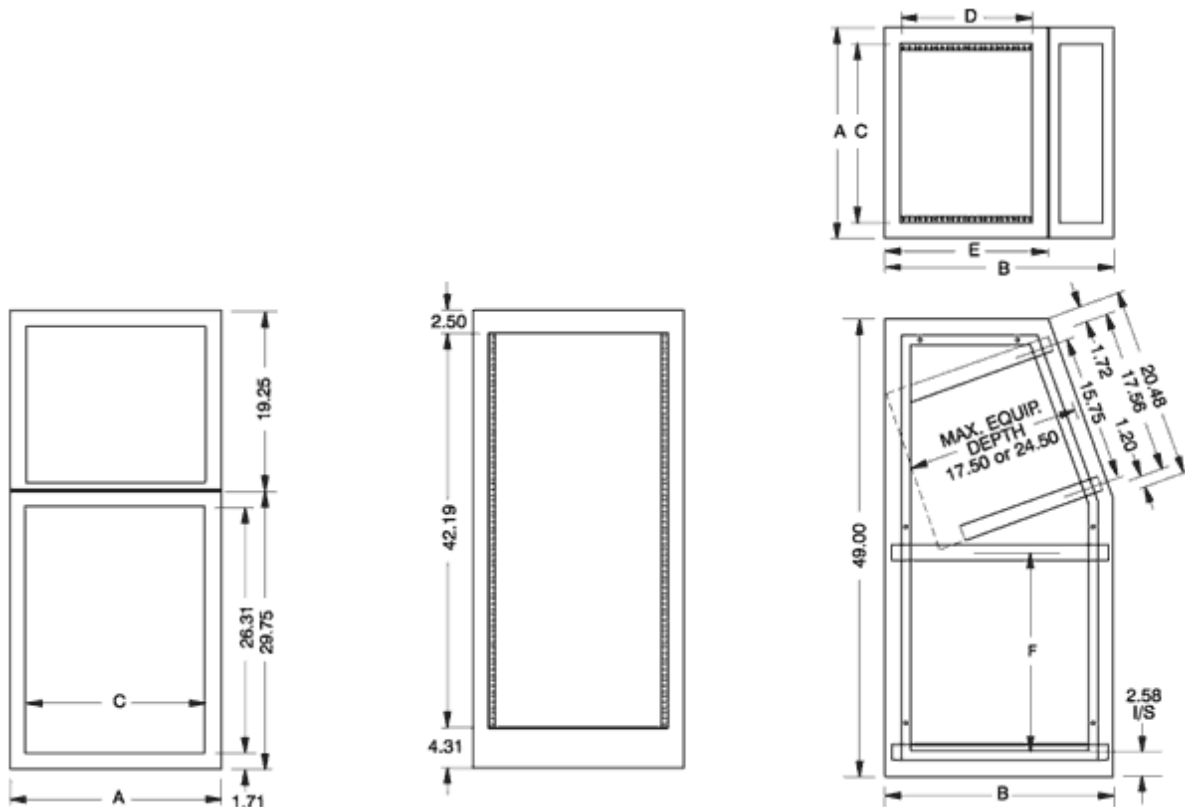
- Two (2) pairs of EIA compliant pre-installed upper and lower round hole punched mounting rails
 - Starter pack of **1421N25** clip nuts
- One (1) Set of four (4) leveling feet

Gallery



Accessories

- Rack Shelves
- Rack Panels
- Lite Duty Caster Set
- Equipment Cooling
- Outlet Strips
- Cable Management
- Mounting Rack Rails
- Mounting Hardware



1564 Frame and Side Panels

| Frame Part No. | A | B | C | D | E | F | Side Panel Part No. (Sold As A Pair) |
|----------------|-------|-------|-------|-------|-------|-------|---|
| 1564A2BK1 | 22.56 | 24.50 | 19.06 | 14.00 | 17.50 | 21.31 | 1564APBK1 |
| 1564B2BK1 | 22.56 | 31.50 | 19.06 | 21.00 | 24.50 | 19.56 | 1564BPK1 |

Side Panels Sold in Pairs

1564 Doors

| Door Type | Front Door Part No. | Front Door with Desk Unit Option Part No. | Rear Door Part No. |
|-----------|---------------------|---|--------------------|
| Solid | RSDF19026BK1 | RSDF19022BK1 | RSDF19042BK1 |
| Louvered | RSDL19026BK1 | RSDL19022BK1 | RSDL19042BK1 |

Doors are constructed of 18 gauge steel and feature lockable latch.

1564 Top Panels

| Part No. | Top Panel | For Use With Frames |
|--------------|-----------|---------------------|
| PBRs19014BK2 | Solid | 1564A2 |
| PBRs19021BK2 | Solid | 1564B2 |
| PVLK19014BK1 | Louvered | 1564A2 |
| PVLK19021BK1 | Louvered | 1564B2 |

1564 Corner Wedges

| Part No. | For Use With Frame |
|-------------|--------------------|
| 1564AW30BK1 | 1564A2 |
| 1564BW30BK1 | 1564B2 |
| 1564AW60BK1 | 1564A2 |
| 1564BW60BK1 | 1564B2 |

Data subject to change without notice

