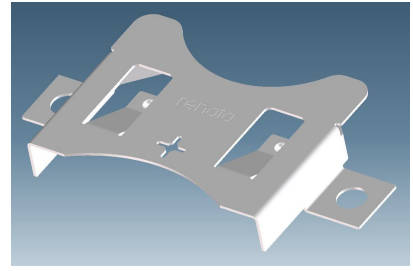
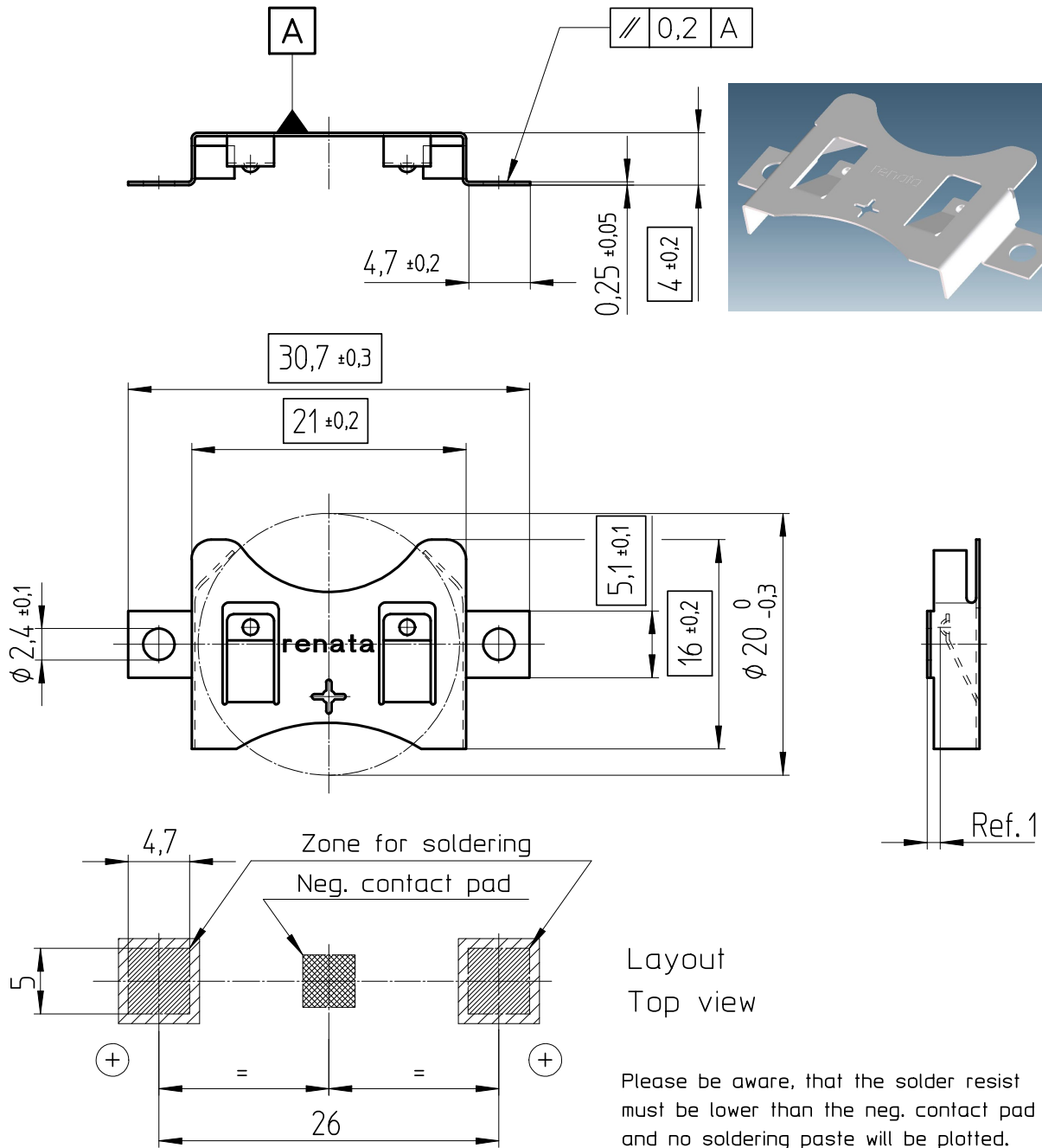


Art.-Number: 100340



- Samples can deviate in the execution from the serie.

- Dimensions and tolerances can be specified only after the testing of the devices for the mass production definitely

Layout
Top view

Please be aware, that the solder resist must be lower than the neg. contact pad and no soldering paste will be plotted.

Holder material : C5210 (JIS) or CuSn8 (DIN)
all round ni-plating include edges

All framed values will be used for dimension checking !

Rev.	②	12.02.15	SRi	Rev.	⊙	.	.	Customer's Approval			
Rev.	⊙	.	.	Rev.	⊙	.	.	Date			
Rev.	⊙	.	.	Rev.	⊙	.	.	Signature			
Titel: SMTM2032								Scale	Drawn	31.01.08	SRi
								2:1	Checked	13.02.15	MDi
								Approved			
renata batteries				CH-4452 Itingen Switzerland				3.9216.4-2			