

6

5

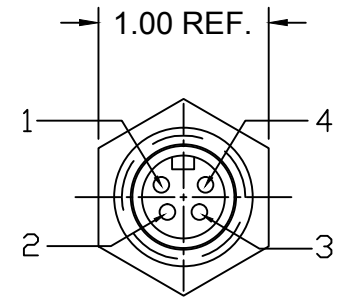
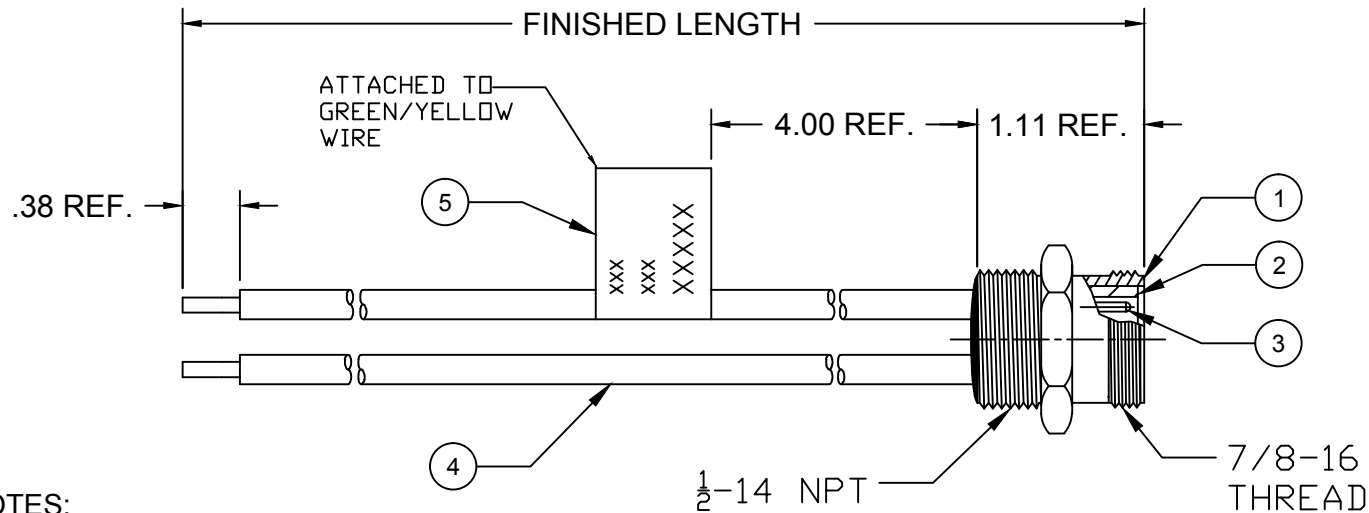
4

3

2

1

PART NO.	ENG NO.	FINISHED LENGTH
1300131121	1R4S06A20A120G	12.0 IN +.75/-0



FRONT VIEW - MALE INSERT

- 1-BLACK
2-WHITE
3-RED
4-GREEN/YELLOW

NOTES:

A. MATERIAL:

1. RECEPTACLE SHELL: ZINC DIE-CAST, NICKEL PLATED
2. INSERT: PVC, BLACK
3. CONTACT PINS: Cu ALLOY, GOLD PLATED
4. CONDUCTORS: 16 AWG PVC INSULATED, UL1015
5. LABEL: VINYL, BLACK / YELLOW

B. ELECTRICAL RATING:

VOLTAGE: 600V AC/DC
CURRENT: 10 AMPS

C. PACKAGING:

PARTS ARE PACKED IN CLEAR
POLY BAG WITH WARNING LABEL
PLACED INSIDE BAG. BARCODE
LABEL IS PLACED ON OUTSIDE OF BAG

D. ENVIRONMENTAL:

IP67 (WHEN MATED)
TEMPERATURE: -20°C TO +105°C

RELEASED EC NO: IPG2016-1376 DRWN: RSTONE 2016/04/11 CHKD: M ZIELIN 2016/04/13 APPR: KJOZWIK 2016/04/15	DESCRIPTION	QUALITY SYMBOLS =0 =0	GENERAL TOLERANCES (UNLESS SPECIFIED)			DIMENSION STYLE INCH		SCALE ---	DESIGN UNITS INCH	THIRD ANGLE PROJECTION				
				mm	INCH	DRAWN BY RSTONE	DATE 2016/04/11	TITLE MINI-CHANGE BRAD POWER MALE RECEPTACLE 1/2 NPT 16 AWG						
			4 PLACES	±---	±---	CHECKED BY M ZIELIN	DATE 2016/04/13							
			3 PLACES	±---	±---									
			2 PLACES	±---	±.01	APPROVED BY KJOZWIK			DATE 2016/04/15	MOLEX INCORPORATED				
			1 PLACE	±---	±---	ANGULAR ±---°								
			DRAFT WHERE APPLICABLE MUST REMAIN WITHIN DIMENSIONS			MATERIAL NO. SEE CHART			DOCUMENT NO. SD-130013-119			SHEET NO. 1 OF 1		
						SIZE A			THIS DRAWING CONTAINS INFORMATION THAT IS PROPRIETARY TO MOLEX INCORPORATED AND SHOULD NOT BE USED WITHOUT WRITTEN PERMISSION					