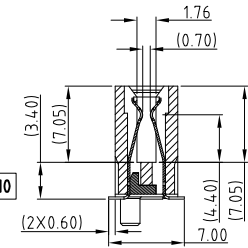
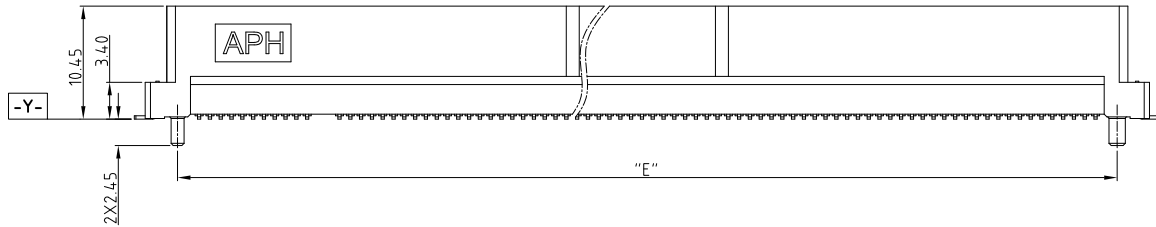
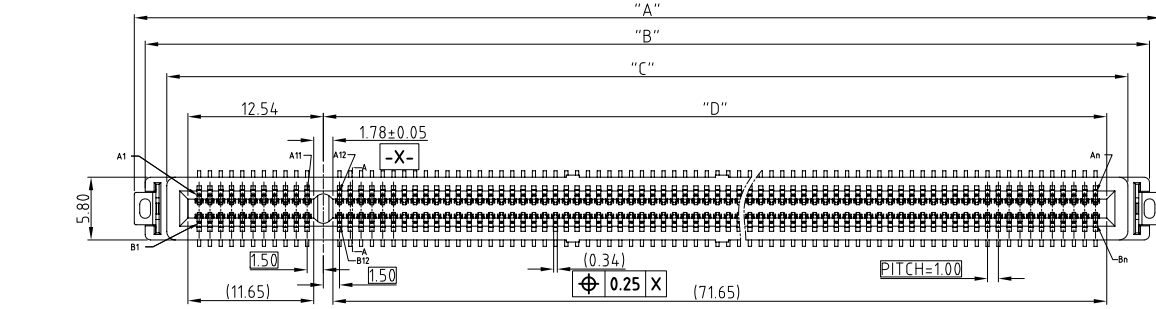


This document is the property of Amphenol Corporation and is delivered on the express condition that it is not to be disclosed, reproduced or used, in whole or in part, for manufacture or sale by anyone other than Amphenol Corporation without its prior consent, & that no right is granted to disclose or to use any information in this document.

CUSTOMER DRAWING

REVISIONS				
SYM	ECN	DESCRIPTION	DATE	APPROVED
1	N/A	First Proposal	Jan.11,2018	
2	N/A	Update PN	May.11,2018	



SECTION: A-A

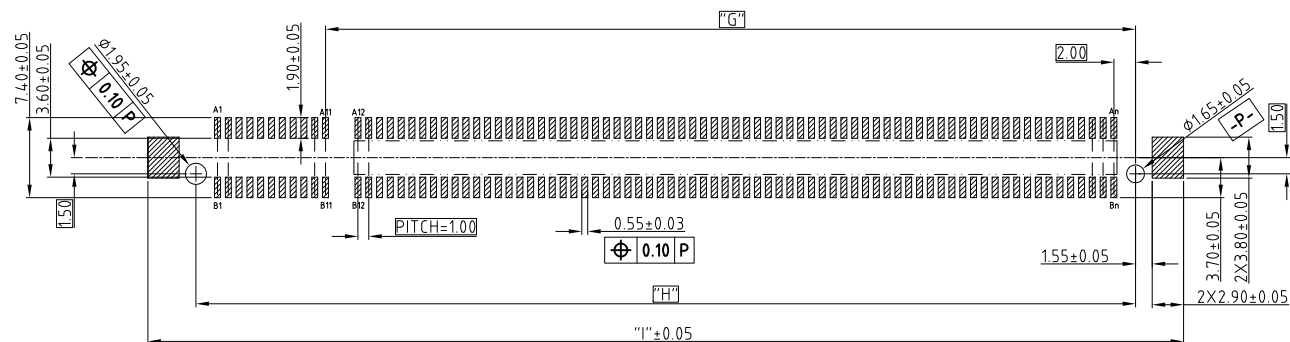
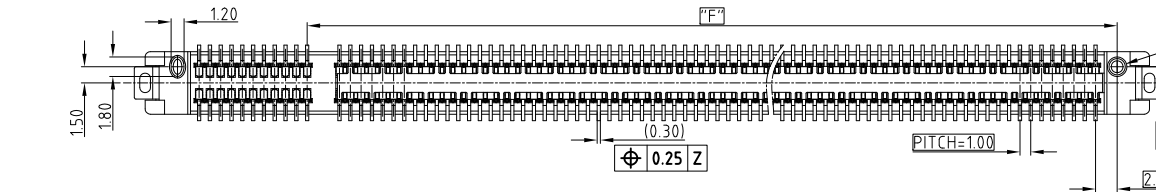
PART NUMBER SYSTEM

CEE0XXX001401X X

- PLATING SPEC
 - 1 0.76um Au
 - 2 0.38um Au
 - 3 GOLD FLASH
 - 4 0.76um PdNi+GOLD FLASH
- Speed
 - 10 32Gbps
 - 11 16Gbps
- PIN COUNT
 - 98
 - 164



- NOTE:
- MATERIAL:
 - HOUSING: HIGH TEMPERATURE THERMOPLASTIC BLACK UL94-V0
 - CONTACT: COPPER ALLOY
 - BOARDLOCK: SPCC
 - PLATING:
 - CONTACT: MATING AREA: SEE PLATING SEPC OVER 1.27-2.54 UM NICKEL UNDERPLATED
 - SOLDER AREA: 1.27 MIN TIN OVER 1.27-2.54 UM NICKEL UNDERPLATED
 - BOARDLOCK: 1.27 MIN TIN OVER 1.27-2.54UM NICKEL UNDERPLATED
 - ELECTRICAL PERFORMANCE:
 - RATED CURRENT FOR SIGNAL PIN: 0.7A/PIN;
 - RATED CURRENT FOR Power Pin:1.1A/pin(total:8pin Include:A2/A3/A9/A10/B1/B2/B3/B8).
 - PRODUCT SHALL MEET ALL DIMENSIONS BEFORE EXPOSURE TO 260°C MAX. FOR 10S
 - MATERIAL SHOULD BE FULFILLED AMPHENOL SPEC # SSN002
 - ORDERING PN: REFER TO THE PN SYSTEM
 - 25~32Gbps: THE ECB CONNECTS ALL GND PIN.
16Gbps max: DO NOT HAVE TO CONNECTS ALL GND PIN



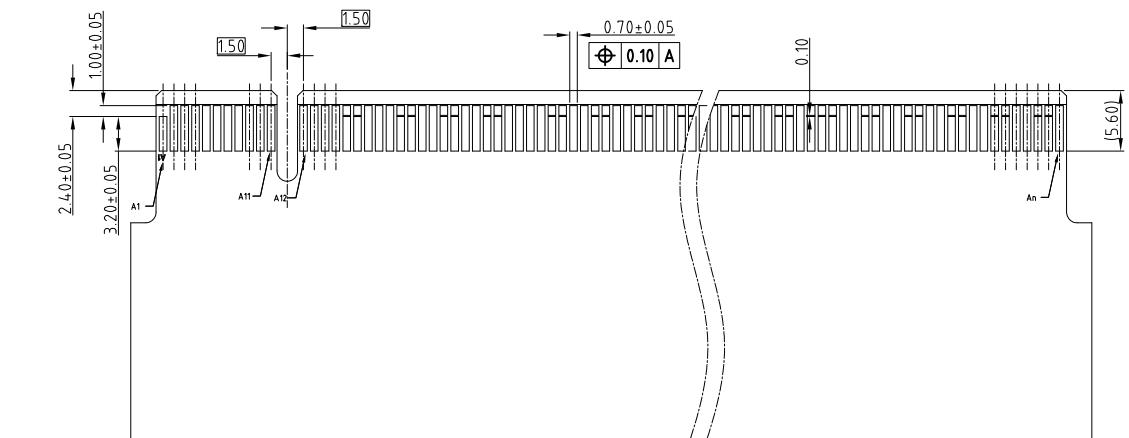
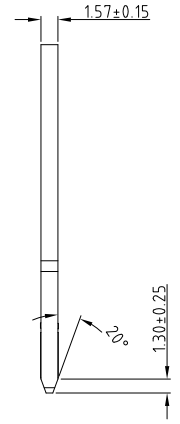
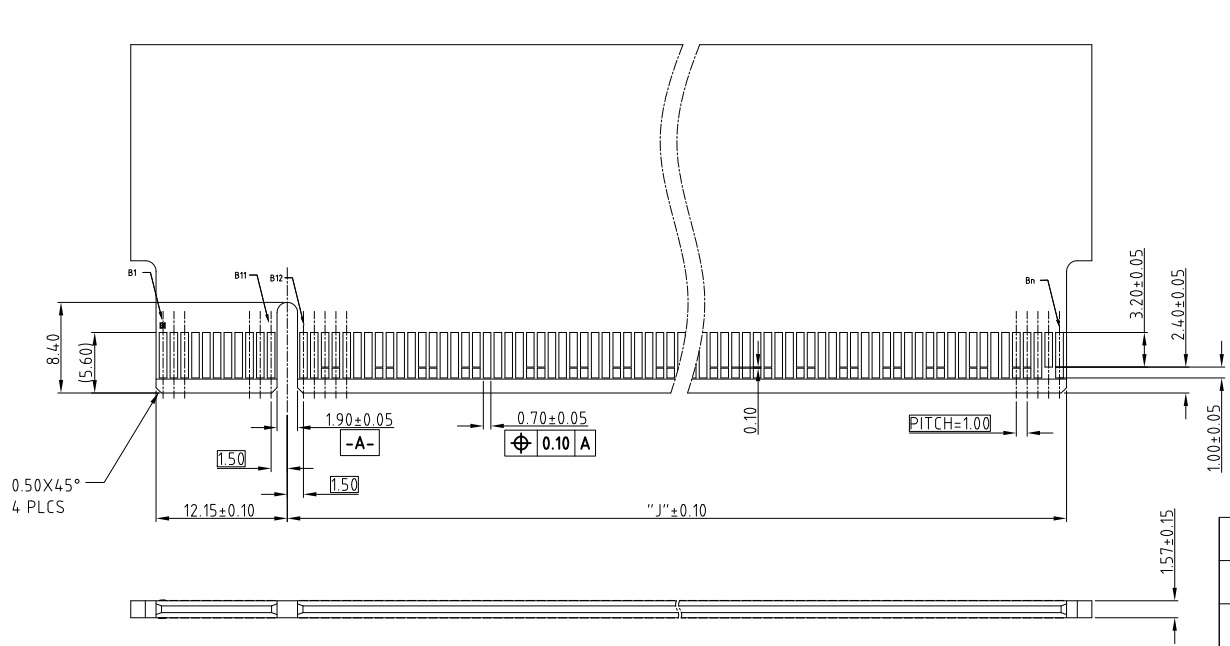
RECOMMENDED PCB LAYOUT
GENERAL TOLERANCE ±0.05

UNLESS OTHERWISE SPECIFIED TOLERANCES U.S. METRIC X +/- 0.25 .XX +/- 0.20 .XXX +/- 0.15 FRACTIONS +/- 5" ANGLES +/-	APPROVAL	DATE	Amphenol	
	DRAWN Xg.liu	May.11,2018		
	CHECKED			
REMOVE SHARP EDGES	ANGLE OF PROJECTION		TITLE	
DIMENSIONS	DRAWING FILE :		Cool Edge	
U.S. INCHES	INTERNAL_DRAWING_CEE_C CEE0XXX001401YX		1.0mm pitch connector	
(METRIC) (mm)	SIZE DRAWING NO.		A3 C CEE0XXX001401YX	
	SCALE		NONE	
	SHEET		1 OF 2	

This document is the property of Amphenol Corporation and is delivered on the express condition that it is not to be disclosed, reproduced or used, in whole or in part, for manufacture or sale by anyone other than Amphenol Corporation without its prior consent, & that no right is granted to disclose or to use any information in this document.

CUSTOMER DRAWING

REVISIONS				
SYM	ECN	DESCRIPTION	DATE	APPROVED



DIMENSIONS										
POSITION	A	B	C	D	E	F	G	H	I	J
98PIN	62.00	60.00	56.00	39.54	54.00	42.00	42.00	54.00	62.90	39.15
164PIN	95.00	93.00	89.00	72.54	87.00	75.00	75.00	87.00	95.90	72.15

SIDE A GND PIN	A12,A15,A18,A20,A23,A24,A27,A28,A31,A34,A37, A38,A41,A42,A45,A46,A49,A51,A54,A55,A58,A59, A62,A63,A66,A67,A70,A71,A74,A75,A78,A79,A82
SIDE B GND PIN	B13,B16,B18,B21,B22,B25,B26,B29,B32,B35,B36,B39, B40,B43,B44,B47,B49,B52,B53,B56,B57,B60,B61,B64, B65,B68,B69,B72,B73,B76,B77,B80

GND PIN Definition

RECOMMENDED LAY OUT FOR MATING CARD, THICKNESS=1.57mm
GENERAL TOLERANCE ±0.05



UNLESS OTHERWISE SPECIFIED TOLERANCES U.S. METRIC .X +/- 0.10 .XX +/- 0.05 .XXX +/- 0.03 FRACTIONS +/- ANGLES +/- 5°	APPROVAL	DATE	Amphenol	
	DRAWN Xg.liu	May.11.2018		
	CHECKED			
FOR MATERIALS AND FINISHES SEE NOTES	APPROVED		TITLE	
REMOVE SHARP EDGES	DRAWING FILE : INTERNAL_DRAWING_CEE_C_CEE0XXX001401YX		Cool Edge	
DIMENSIONS	ANGLE OF PROJECTION		1.0mm pitch connector	
U.S. INCHES	[Symbol]		SIZE	DRAWING NO.
(METRIC) (mm)	[Symbol]		A3	C CEE0XXX001401YX
			SCALE	NONE
			SHEET 2 OF 2	