

PRODUCT NUMBER
10130814-116LF

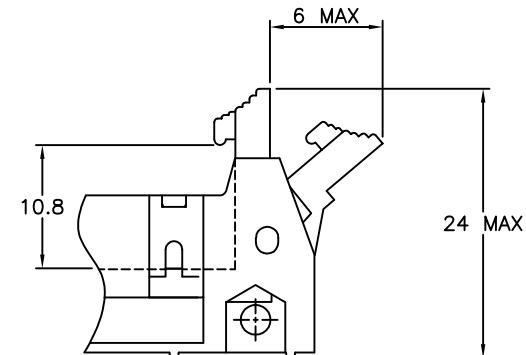
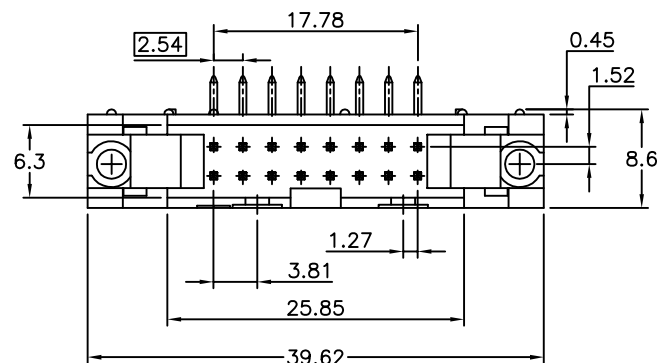
INDICATES THE PRODUCT IS RoHS
COMPATIBLE, SEE NOTE 5

TOTAL NB OF POSITIONS

NOTES:

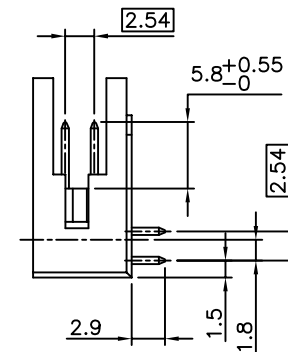
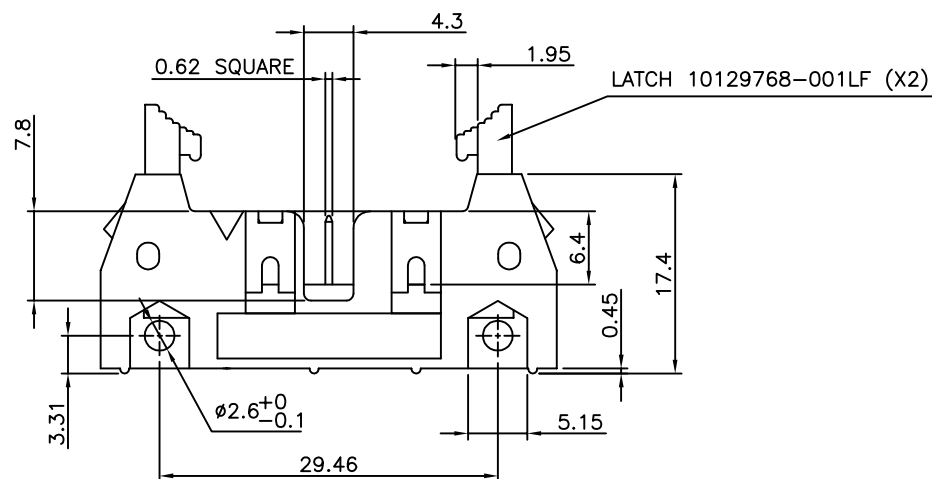
- 1 - MATERIAL :
HOUSING MAT'L : GLASS FILLED
THERMOPLASTIC. UL94V-0 COLOR: GREY
PIN MATERIAL : PHOSPHOR BRONZE
- 2 - PLATING SPECIFICATIONS :
0.76µm GOLD/GXT(PdNi WITH GOLD FLASH)
ON CONTACT AREA
2µm MIN MATTE TIN ON TAILS
1.27µm NICKEL MIN UNDERLAYER
- 3 - PRODUCT PACKAGED IN TUBES
- 4 - 40N MIN LATCH RETENTION FORCE
AT FIRST EXTRACTION
- 5 - RoHS COMPATIBLE PRODUCT SPECIFICATIONS
 - a - PLATING:
 - "LF" MEANS THE PRODUCT IS LEAD-FREE,
2µm MINIMUM MATTE TIN OVER 1.27µm
MINIMUM NICKEL UNDERPLATE.
 - b - MANUFACTURING PROCESS COMPATIBILITY
 - THE HOUSING WILL WITHSTAND EXPOSURE TO
260°C ±5°C SOLDER BATH TEMPERATURE FOR
5 SECONDS IN A WAVE SOLDER APPLICATION
WITH A 1.6mm MIN THICK CIRCUIT BOARD.
 - c - LABELING:
 - MEETS PACKAGING SPECS AS PER GS-14-920
 - d - LEGAL STATEMENT: SEE GS-47-0004

VIEW WITHOUT LATCHES

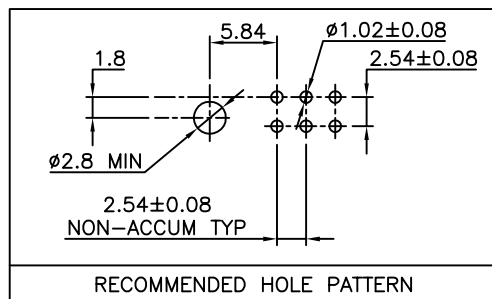


LATCHING FEATURES :

FOR LATCH DETAILS
SEE DRAWING 10129768



VIEW WITHOUT LATCHES



mat'l. code SEE NOTES				surface ISO 1302	tolerance ISO 406 ISO 1101	projection mm	product family QUICKIE		
ltr	ecn no	dr	date	tolerances unless otherwise specified		scale 2:1	title		
A	---	AMA	15.10.26	angles	XX ±0.3		SHR EL HEADER		
				linear	.XX ±0.13		CUSTOM LATCHES		
					.XXX ±0.05				
				dr	L.MULIN 14.07.02	FCI	dwg no		sheet 1 of
				engr	JM.C 14.07.02		10130814		A3
				chr					
				app	L.MULIN 14.07.02		type		CUSTOMER Drawing
sheet index	revision	sheet							