

SAFETY ORGANIZATION(S)

THIS FILTER HAS BEEN FORMALLY RECOGNIZED, CERTIFIED OR APPROVED BY THE LISTED AGENCY. THEREFORE, ALL TEST/REQUIREMENTS SPECIFIED IN THE LATEST REVISION OF THE FOLLOWING AGENCY STANDARDS HAVE BEEN MET.

- UL 1283
- CSA 22.2, NO. 0, 0, 4, 8
- VDE 565-3
- SEMKO APPROVED
- SEN 432901

OPERATING SPECIFICATIONS

- LINE VOLTAGE/CURRENT: 3 AMP., 120/250 VAC
- LINE FREQUENCY: 50-60Hz
- MAX. LEAKAGE CURRENT, EACH LINE TO GROUND: .20mA at 120V 60 Hz
- OPERATING AMBIENT TEMP. RANGE: .33 mA at 250V 50 Hz
- IN AN AMBIENT, T_a , HIGHER THAN 40°C, THE MAXIMUM OPERATING CURRENT, I_o , IS AS FOLLOWS:

$$I_o = I_r \sqrt{\frac{85 - T_a}{45}}$$

RELIABILITY SPECIFICATIONS

- STORAGE TEMPERATURE: -40°C TO +85°C
- HUMIDITY: 21 DAYS @ 40°C 95% RH
- CURRENT OVERLOAD TEST: 6 TIMES RATED CURRENT FOR 8 SECONDS

TEST SPECIFICATIONS

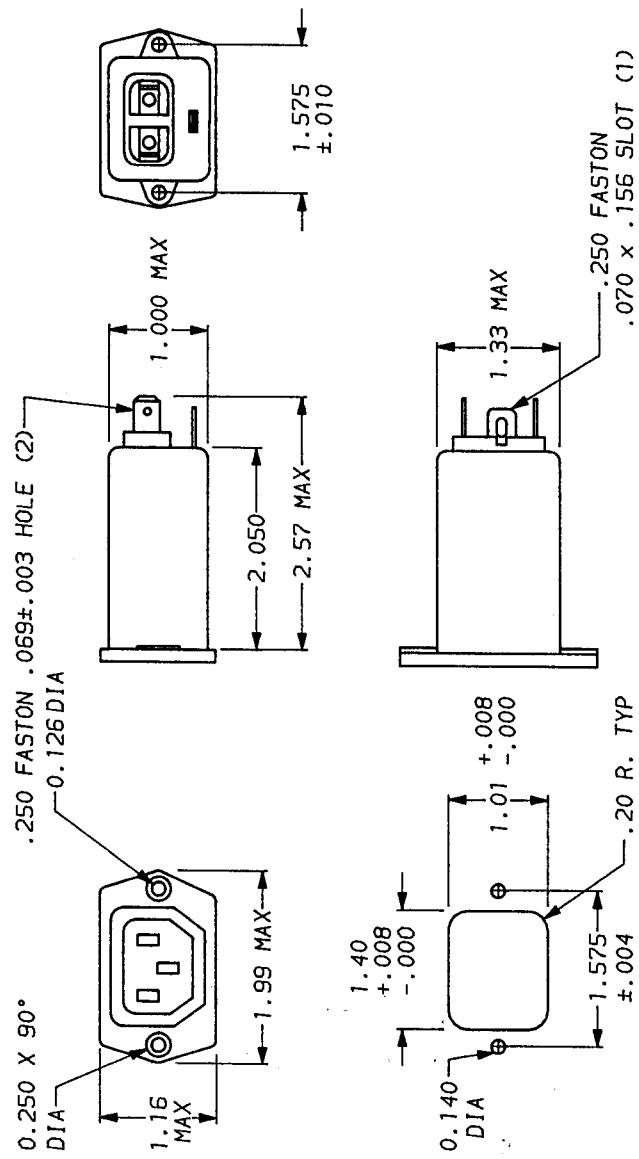
- INDUCTANCE: 1.45 mH NOMINAL
- CAPACITANCE, (MEASURED @ 1 KHZ, 0.25 VAC MAX., 25°C ±1°C): .003µF ±20%
- LINE TO GROUND: .047µF ±20%
- LINE TO LINE: 1.5 MΩ
- DISCHARGE RESISTOR: 6000 MΩ (MIN) AT 100 VDC
- LINE/GROUND AND LINE/LINE INSULATION RESISTANCE: 20°C AND 50% RH
- (W/O DISCHARGE RESISTOR)

RECOMMENDED RECEIVING INSPECTION HIPOUT.

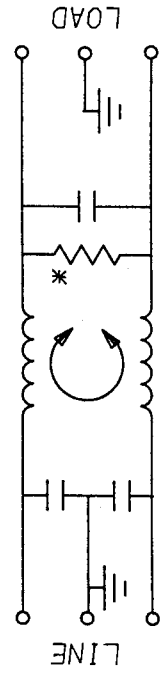
- LINES TO GROUND: 2250 VDC FOR 1 MINUTE
- LINE TO LINE: 1450 VDC FOR 1 MINUTE

FILTER APPROVAL

THE BEST WAY TO SELECT AND QUALIFY A FILTER IS FOR YOUR ENGINEERING TO TEST THE UNIT IN YOUR EQUIPMENT.



THIS FILTER LINE AND LOAD ARE REVERSED; THE SOCKET IS LOAD.



| FREQUENCY MHZ | 50Ω - 50m (MINIMUM) INSERTION LOSS | | | | | | | | | | | |
|------------------|------------------------------------|-----|----|-----|----|----|----|----|----|----|----|----|
| | .01 | .05 | .1 | .15 | .5 | 1 | 3 | 5 | 10 | 30 | | |
| COMMON | - | - | - | 10 | 15 | 19 | 30 | 36 | 44 | 49 | 50 | 47 |
| DIFF. | - | - | - | 1 | 2 | 11 | 14 | 25 | 36 | 44 | 40 | - |

This document is proprietary to CORCOM INC. and is not to be reproduced nor used for manufacturing purposes except on CORCOM's order or prior written consent.



LIBERTYVILLE, IL 60048

ACCESSORY OUTLET FILTER

| | | | |
|---------|----------|----------|----------|
| SCALE | DATE | ORG. NO. | REV. |
| NTS | 11-5-90 | | 3EBF1.02 |
| DRW. BY | INITIALS | | |
| CFW | CFW | | |

*RESISTOR ADDED TO PRODUCT BUILT AFTER 3-30-92 (9212)