

"High Frequency Ceramic Solutions"

2.35GHz Balun/Filter Combination

P/N 2345FB39A0050

Detail Specification: 08/14/07

Page 1 of 2

General Specifications

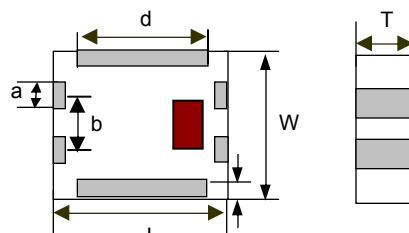
| | |
|----------------------|---------------|
| Part Number | 2345FB39A0050 |
| Frequency (MHz) | 2300 - 2390 |
| Unbalanced Impedance | 50 Ω |
| Balanced Impedance | 50 Ω |
| Insertion Loss | 3.2 dB max. |
| Return Loss | 11.73 dB min. |
| Phase Difference | 180° \pm 10 |
| Amplitude Difference | 1.5 dB max. |

| | |
|---------------------------|------------------------|
| Attenuation (dB) | 30 min. @ 766~797MHz |
| | 20 min. @ 1532~1594MHz |
| | 12 min. @ 2110~2170MHz |
| | 29 min. @ 3066~3186MHz |
| | 28 min. @ 3833~3983MHz |
| Operating + Storage Temp. | -40 to +85°C |
| Reel Quantity | 3000 |
| Power Capacity | 1 watt max. |
| MSL | 2 * |

* - 1 yr shelf life in bag; 1 week shelf life out of bag;
Vacuum reseal unused reel

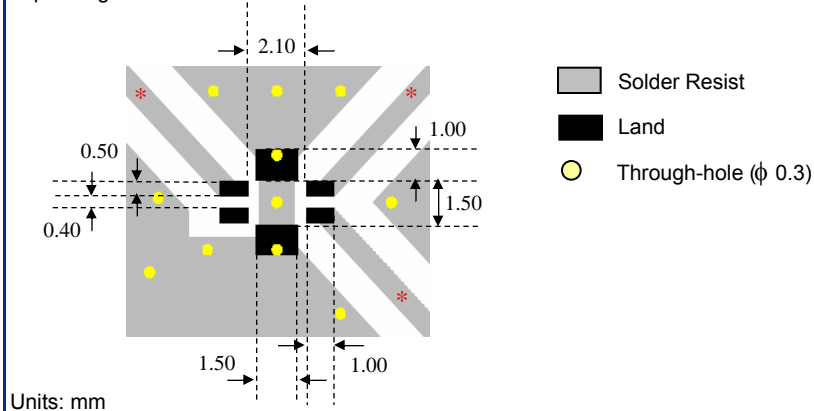
Mechanical Dimensions

| | In | mm |
|---|--------------------|-----------------|
| L | 0.098 \pm 0.008 | 2.50 \pm 0.20 |
| W | 0.079 \pm 0.008 | 2.00 \pm 0.20 |
| T | 0.043 \pm 0.004 | 1.10 \pm 0.10 |
| a | 0.016 \pm 0.008 | 0.40 \pm 0.20 |
| b | 0.031 \pm 0.008 | 0.80 \pm 0.20 |
| c | 0.012 +.004/-0.008 | 0.30 +0.1/-0.2 |
| d | 0.075 \pm 0.008 | 1.90 \pm 0.20 |



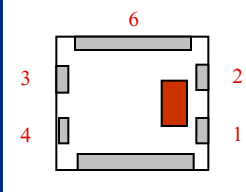
Mounting Considerations

* Line width should be designed to match specified characteristic impedance, depending on PCB material and thickness.



Terminal Configuration

| No. | Function |
|-----|-----------------|
| 1 | Unbalanced Port |
| 2 | NC or DC Feed |
| 3 | Balanced Port |
| 4 | Balanced Port |
| 5 | GND |
| 6 | GND |



Johanson Technology, Inc. reserves the right to make design changes without notice.
All sales are subject to Johanson Technology, Inc. terms and conditions.



www.johansontechology.com
4001 Calle Tecate • Camarillo, CA 93012 • TEL 805.389.1166 FAX 805.389.1821

2007 Johanson Technology, Inc. All Rights Reserved

"High Frequency Ceramic Solutions"

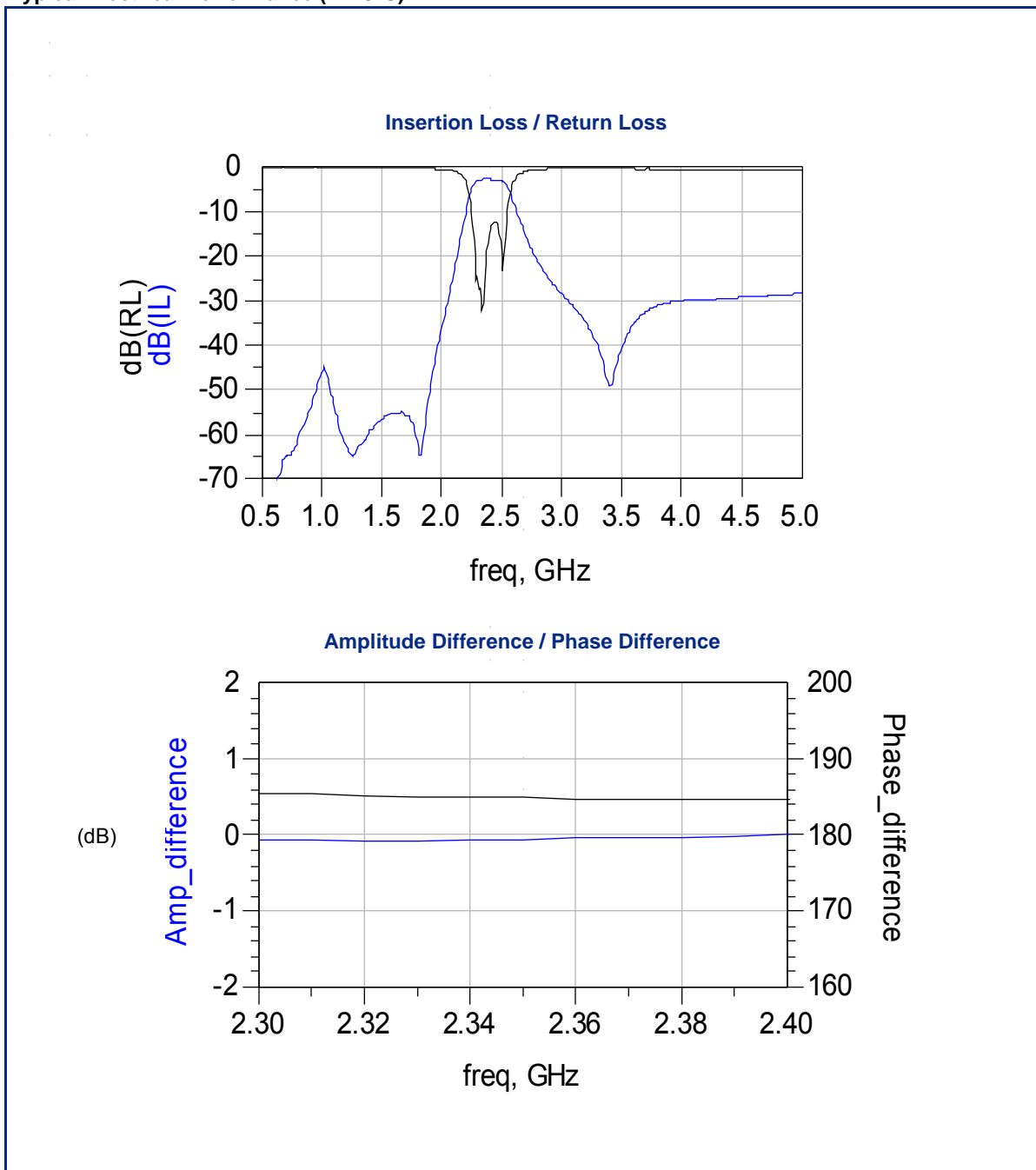
2.35GHz Balun/Filter Combination

P/N 2345FB39A0050

Detail Specification: 08/14/07

Page 2 of 2

Typical Electrical Performance (T=25°C)



Johanson Technology, Inc. reserves the right to make design changes without notice.
All sales are subject to Johanson Technology, Inc. terms and conditions.



www.johansontechnology.com

4001 Calle Tecate • Camarillo, CA 93012 • TEL 805.389.1166 FAX 805.389.1821

2007 Johanson Technology, Inc. All Rights Reserved