

# MHDCMR Series

## Diecast Hood & D-Sub Connector Kit | Machined



### Description

- Machined D-Sub connector, solder bucket contacts, Gold plated all over
- Strong Nickel plated, diecast, Zinc hood
- Side cable entry
- Low profile, 9 way 26.2mm, 25 way 36.6mm high
- Will accommodate 4.0mm to 13.0mm diameter cable
- Compression cable clamp inserts for 4, 5, 7 and 9mm diameter cable
- Compression inserts can be mixed to obtain maximum cable retention
- 4-40 UNC Jackscrew

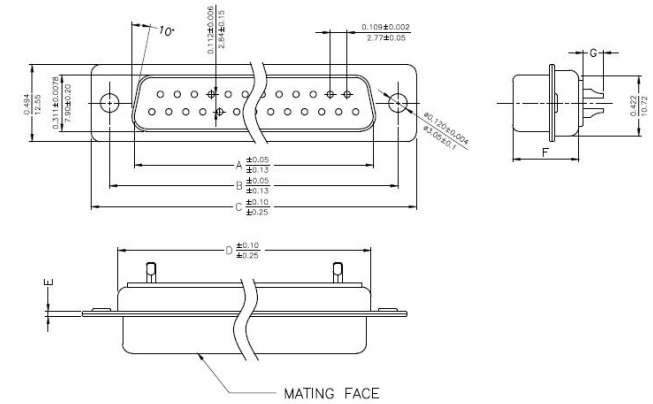
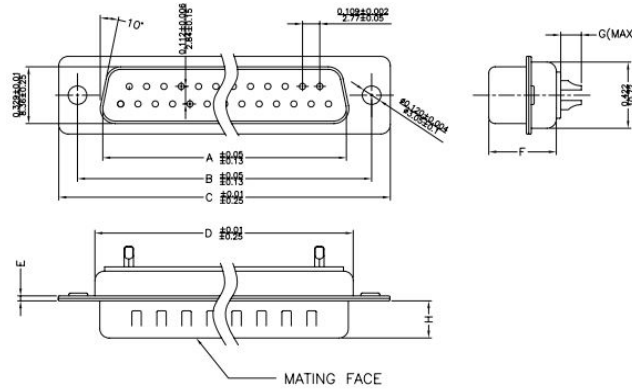
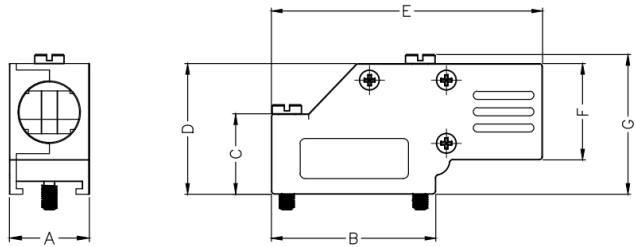
### Specification



D-Sub	
Voltage Rating	250V
Current Rating	5 Amps
Contact Resistance	25mΩ Max
Insulation Resistance	1000MΩ
Operating Temperature	-55°C to 105°C
Shell	Tin plated Steel
Insulator Material	Glass filled Polyester
Contact Material	Copper alloy
Contact Plating	Gold all over

Hood	
No. Contacts	9 & 25
Kit Type	D-Sub connector kit
Housing Material	Nickel plated Zinc
Cable Entry	Side
Cable OD	Up to 13.0mm

The Kit Contains		
Backshell Halves		x 2
D-Sub connector		x 1
Housing screws		x 3
4-40 UNC jackscrews		x 2
Compression inserts		x 1



Hood Dimensions							
	A	B	C	D	E	F	G
09	15.0mm	30.8mm	15.0mm	24.4mm	50.8mm	18.0mm	26.2mm
	0.59"	1.21"	0.59"	0.96"	2.0"	0.71"	1.03"
25	15.8mm	53.3mm	23.1mm	34.5mm	72.4mm	24.3mm	36.6mm
	0.62"	2.10"	0.91"	1.36"	2.85"	0.96"	1.44"

Male Dimensions		
	09	25
A	16.92mm	38.96mm
B	24.99mm	47.04mm
C	30.81mm	53.04mm
D	19.23mm	41.30mm
E	1.0mm	1.0mm
F	10.8mm	10.8mm
G	2.7mm	2.7mm
H	5.84mm	5.84mm

Female Dimensions		
	09	25
A	16.33mm	38.38mm
B	24.99mm	47.04mm
C	30.81mm	53.04mm
D	19.28mm	41.30mm
E	1.0mm	1.0mm
F	10.8mm	10.8mm
G	2.30mm	2.30mm

Part No.	Norcomp Part No.	Positions	Male/Female	Contact Type	Hood Part No.	Norcomp Part No.	D-Sub Part No.	Norcomp Part No.
MHDCMR9-DM9P-K	999-009-F30M102	9 Pin	Male	Machined	MHDCMR09-RA-K	962-009-030R121	MHDM9SP	172-009-102R001
MHDCMR25-DM25P-K	999-025-F30M102	25 Pin	Male	Machined	MHDCMR25-RA-K	962-025-030R121	MHDM25SP	172-025-102R001
MHDCMR9-DM9S-K	999-009-F30M202	9 Pin	Female	Machined	MHDCMR09-RA-K	962-009-030R121	MHDM9SS	172-009-202R001
MHDCMR25-DM25S-K	999-025-F30M202	25 Pin	Female	Machined	MHDCMR25-RA-K	962-025-030R121	MHDM25SS	172-025-202R001