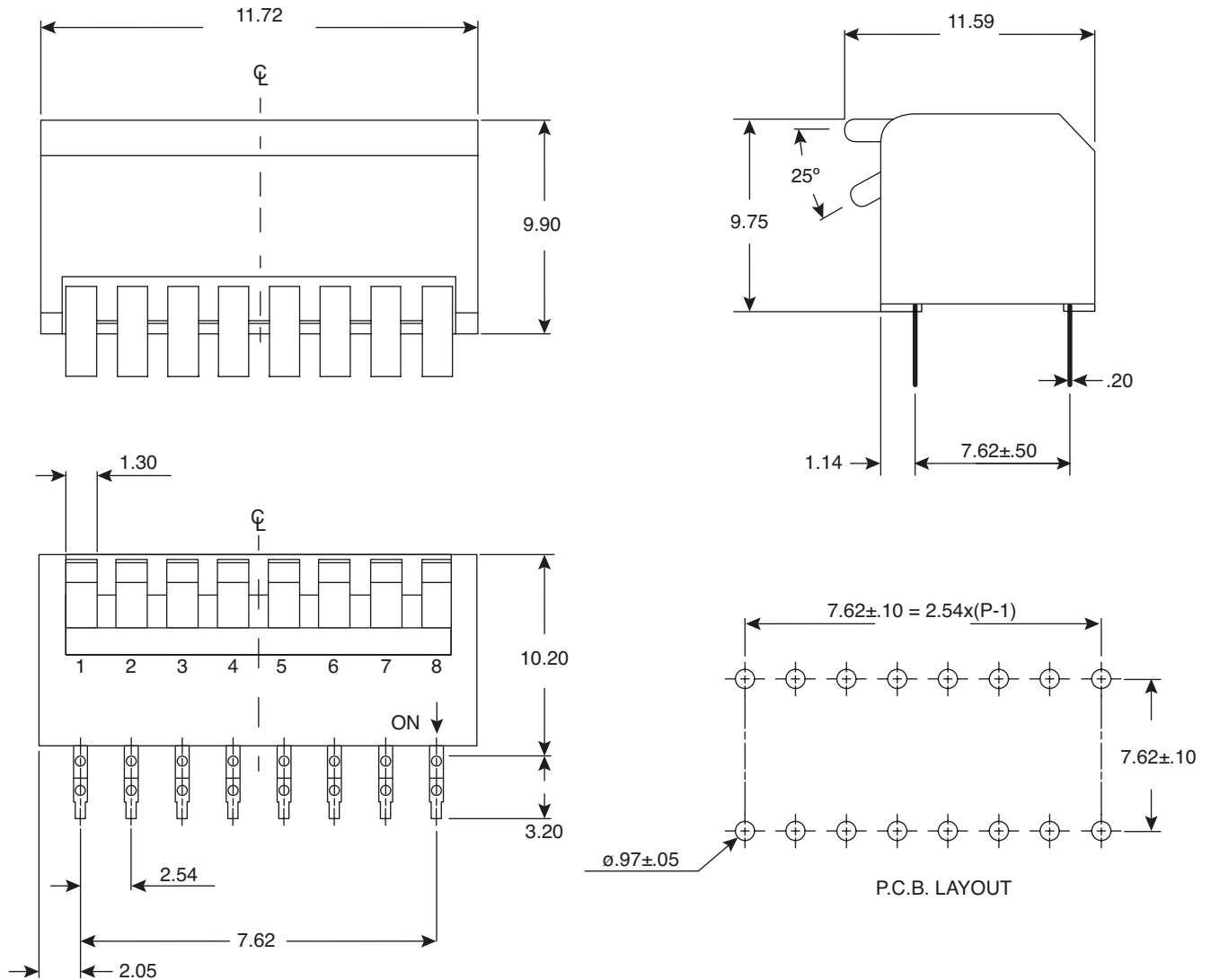


**DIMENSIONS: mm**



**Electrical Specifications:**

- Rating: Switching: 25mA/24VDC  
Non-Switching: 100mA/50VDC
- Contact Resistance: 50mΩ Max. (Initial)
- Insulation Resistance: 100MΩ Min.
- Dielectric Strength: 500V AC (50Hz or 60Hz) for 1 min.

**Soldering Process:**

- Manual Soldering:  
Soldering Temp and Continuous Time: Max.350°C and Max. 5 seconds

**Mechanical Specifications:**

- Operating Temperature Range: -40° C to +85° C
- Storage Temperature Range: -40° C to +85° C

**Note:**

- RoHS Compliant

**Side Actuated DIP Switch**  
106-LPD04-EV

