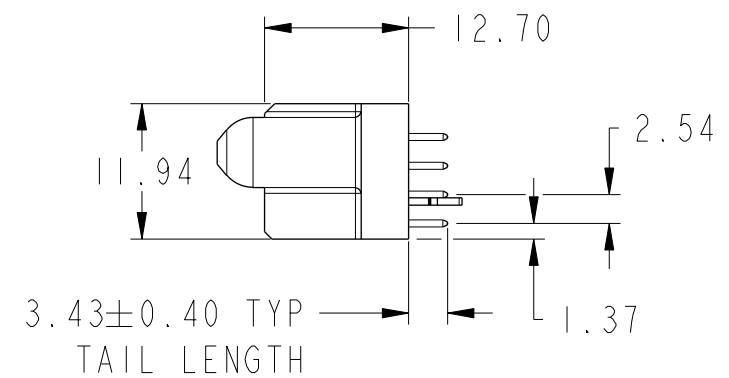
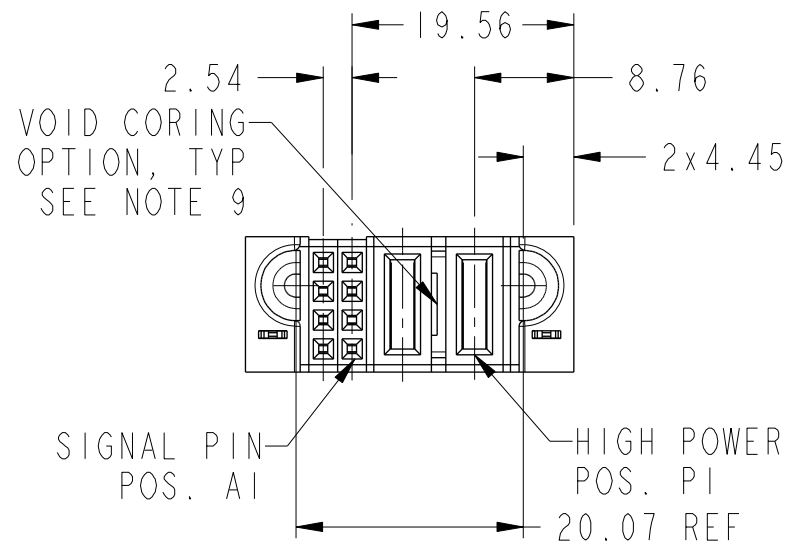
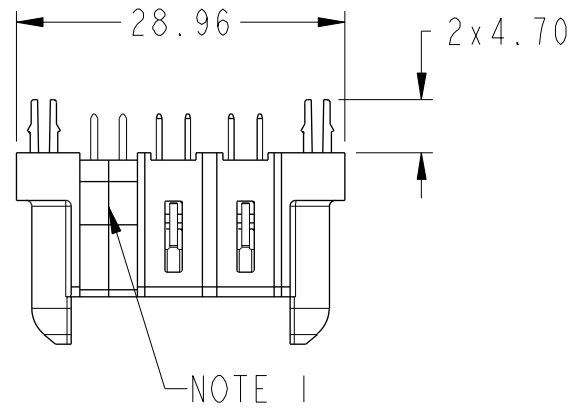
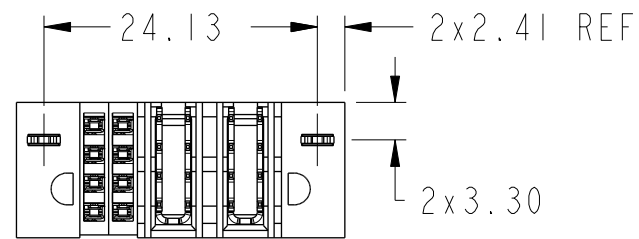




Copyright FCI.

PRODUCT NUMBER SEE SHEET 2



spec ref				dr		Vicking Liu		2015/09/29		projection		<div>MM</div>		size		A3		scale		3:2															
tolerance std		TOLERANCES UNLESS OTHERWISE SPECIFIED				eng		Vicking Liu		2015/11/01						ecn no		ELX-DG-22328-1																	
ASME Y14.5						chr		Fancy Zhang		2015/11/02																									
						appr		Pei-Ming Zheng		2015/11/02		product family				PowerBlade+				rel level		Released													
surface								linear		0.X		±0.50				title				2HP + 8S				dwg no		10106130-2002001				rev		B			
ASME Y14.5		angular		0°		±2°		www.fci.com		cat. no.				Product - Customer Drw				sheet 1 of 3																	



Copyright FCI.

A

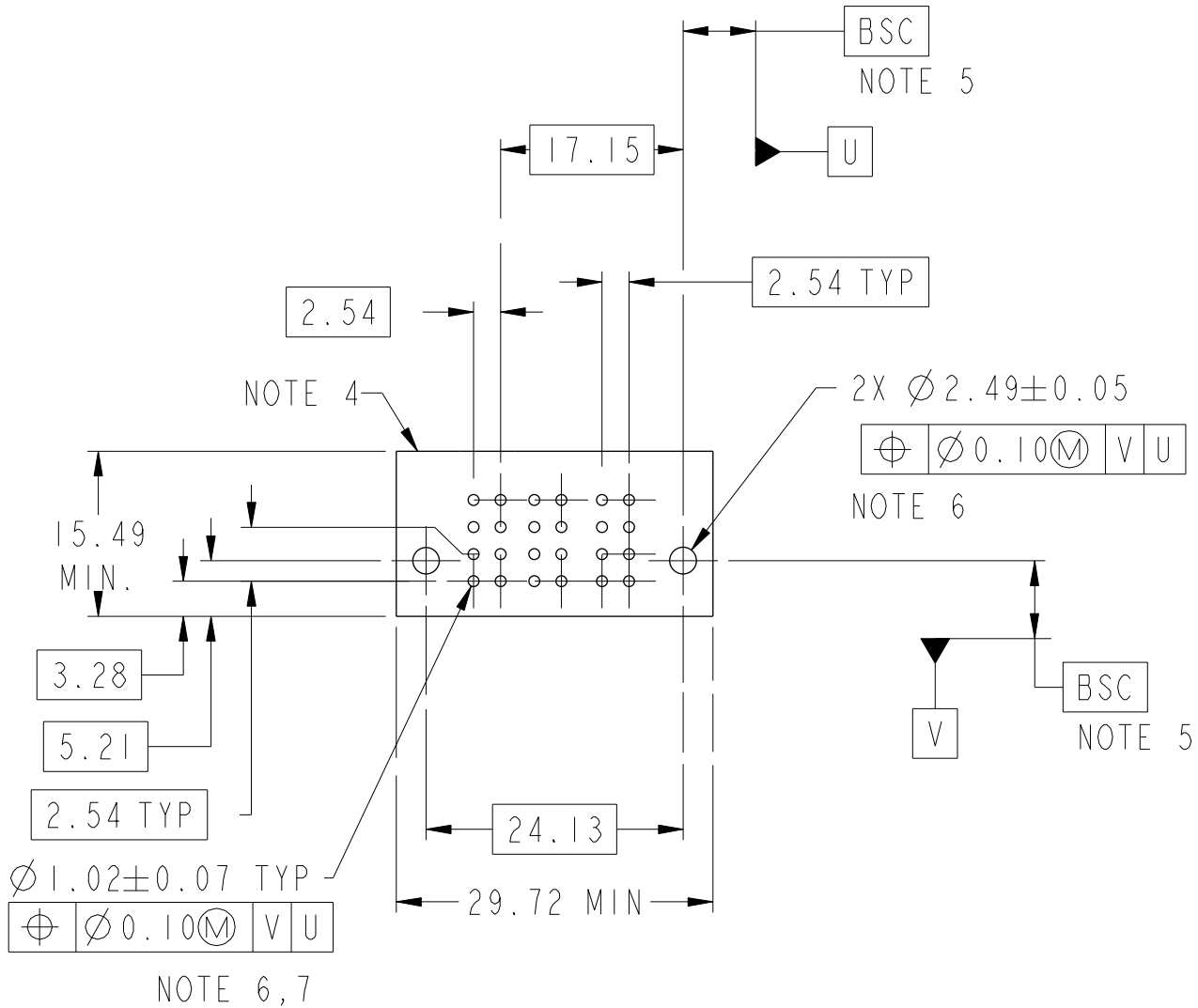
B

C

D

PRODUCT NO.	ROW S	SIGNAL			HP		
		E1	2	1	P2	P1	
10106130-2002001LF	D C B A				H3	H3	

CODE	DESCRIPTION
E	STD SIGNAL CONTACT
H3	STD HIGH POWER CONTACT (3.43)
HA	METAL HOLD DOWN

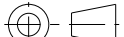




A

B

C

D

dr	Vicking Liu	2015/09/29	<div>projection</div> <div></div>	<div>MM</div> <div></div>	size	A3	scale	3:2			
eng	Vicking Liu	2015/11/01			ecn no	ELX-DG-22328-1					
chr	Fancy Zhang	2015/11/02									
appr	Pei-Ming Zheng	2015/11/02									
			product family	PowerBlade+	rel level				Released		
<div></div>			title		2HP + 8S		dwg no		10106130-2002001	rev	B
			VT STB RECEPTACLE								
www.fci.com			cat. no.		Product - Customer Drw				sheet 2 of 3		

A

B

C

D

A

B

C

D

- NOTES:
- 1) "FCI", PART NUMBER AND DATE CODE TO BE MARKED ON THIS SURFACE.
THE MARK CAN BE OMITTED IF THERE IS NOT ENOUGH SPACE ON THIS SURFACE.
- 2) MATERIALS:
-HOUSING - GLASS FILLED WITH HIGH TEMP THERMOPLASTIC, UL94V-0.
-SIGNAL CONTACT - COPPER ALLOY.
-POWER CONTACT - HIGH CONDUCTIVITY COPPER ALLOY.
- 3) PLATING SPECIFICATION: 10116351
- 4) DENOTES CONNECTOR KEEP OUT ZONE.
- 5) DATUM AND BASIC DIMENIONS ARE ESTABLISHED BY CUSTOMER.
- 6) ALL HOLE DIAMETERS ARE FINISHED HOLE SIZES.
- 7) 1.15 ±0.025MM DRILLED HOLE PLATED WITH 0.00762MM MIN Sn
OVER 0.0254-0.0762MM Cu PLATING TO ACHIEVE A 1.02 ±0.07MM HOLE.
- 8) PRODUCT SPECIFICATION: GS-12-658.
APPLICATION SPECIFICATION: GS-20-141.
PRODUCT PACKAGED IN TRAYS: GS-14-1502.
- 9) THE VOID CORING IN BETWEEN POWER MODULES, SIGNAL
MODULES AND END MODULES ARE OPTIONAL AND THE SHAPE
MAY BE DIFFERENT FOR OPTIMIZING THE MOLDING PROCESS. THE
VOID CORING WILL NOT EFFECT TO PRODUCT FUNCTION.



Copyright FCI.

dr	Vicking Liu	2015/09/29	<div>projection</div> <div></div>	<div>MM</div> <div></div>	size	scale
eng	Vicking Liu	2015/11/01			A3	1:1
chr	Fancy Zhang	2015/11/02			ecn no	ELX-DG-22328-1
appr	Pei-Ming Zheng	2015/11/02			rel level	Released
			product family	PowerBlade+		
<div></div> <div>www.fci.com</div>			2HP + 8S VT STB RECEPTACLE		dwg no	rev
					10106130-2002001	B
			cat. no.	Product - Customer Drw		sheet 3 of 3