

### DC - 18 GHz High Performance

- 2, 5, and 10 Watt Model selection
- Broad Frequency Band Coverage
- Low VSWR - 50 Ohm - High Performance.
- Rugged Stainless Steel Interface Construction

Midwest Microwave's SMA series of medium power coaxial Terminations provide temperature stable, ruggedly built, precision performance in light weight reasonably sized packages using stainless steel connectors and black anodized finned aluminum housings. Input Power levels of 2, 5, and 10 Watts are offered with low VSWR performance and units meet all of the stringent environmental test requirements of MIL-E-5400 and MIL-E-16400.



### 2 Watts - DC - 18 GHz

**Impedance:** 50 Ohms

**Frequency:** DC - 18.0 GHz

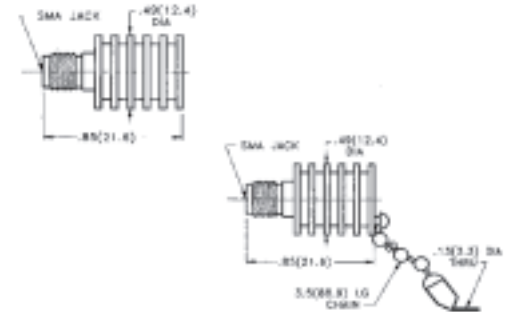
**VSWR:** 1.05 + 0.008 f (GHz)

**Power:** 2 Watts average @ +25 °C derated linearly to 0.5 Watts @ +125 °C

**Peak Power:** 500 Watts

**Operating Temperature Range:** -54 °C to +125 °C

DC - 18.0 GHz	2057 Series	Model Numbers
Female Jack	Female Jack with Chain	
TRM-2057-F0-SMA-07	TRM-2057-FC-SMA-07	



### 5 Watts - DC - 18 GHz

**Impedance:** 50 Ohms

**Frequency:** DC - 18.0 GHz

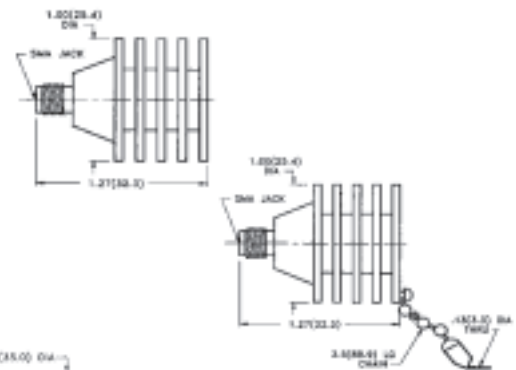
**VSWR:** 1.05 + 0.01 f (GHz)

**Power:** 5 Watts average @ +25 °C derated linearly to 0.5 Watts @ +125 °C

**Peak Power:** 1 Kilowatt

**Operating Temperature Range:** -54 °C to +125 °C

DC - 18.0 GHz	2010 Series	Model Numbers
Female Jack	Female Jack with Chain	
TRM-2010-F0-SMA-07	TRM-2010-FC-SMA-07	



### 10 Watts - DC - 18 GHz

**Impedance:** 50 Ohms

**Frequency:** DC - 18.0 GHz

**VSWR:** 1.05 + 0.01 f (GHz)

**Power:** 10 Watts average @ +25 °C derated linearly to 1.0 Watts @ +125 °C

**Peak Power:** 1 Kilowatt

**Operating Temperature Range:** -54 °C to +125 °C

DC - 18.0 GHz	2013 Series	Model Numbers
Female Jack	Female Jack with Chain	
TRM-2013-F0-SMA-07	TRM-2013-FC-SMA-07	

