

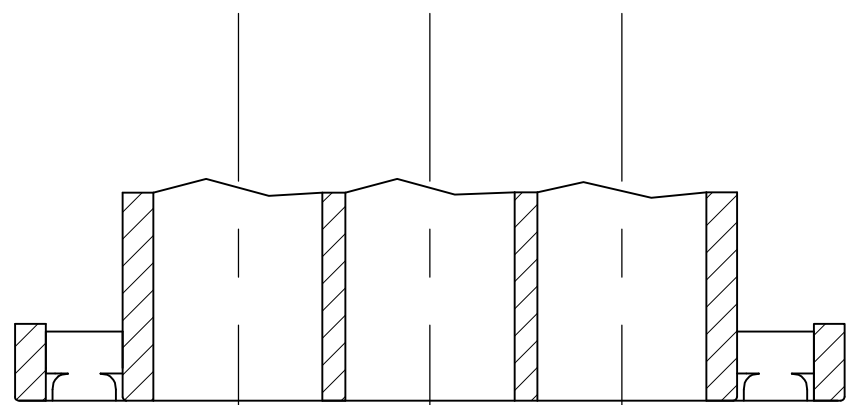
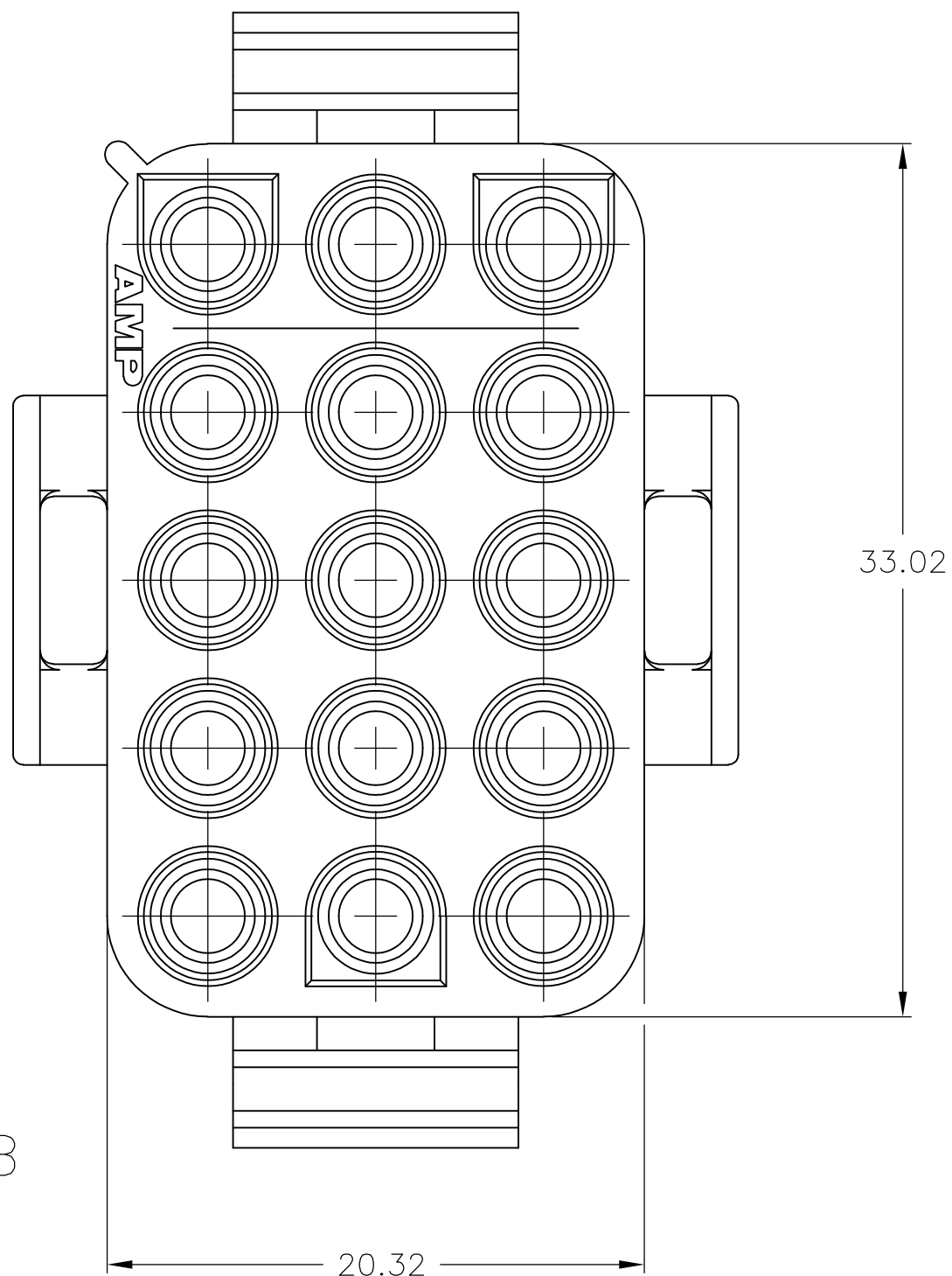
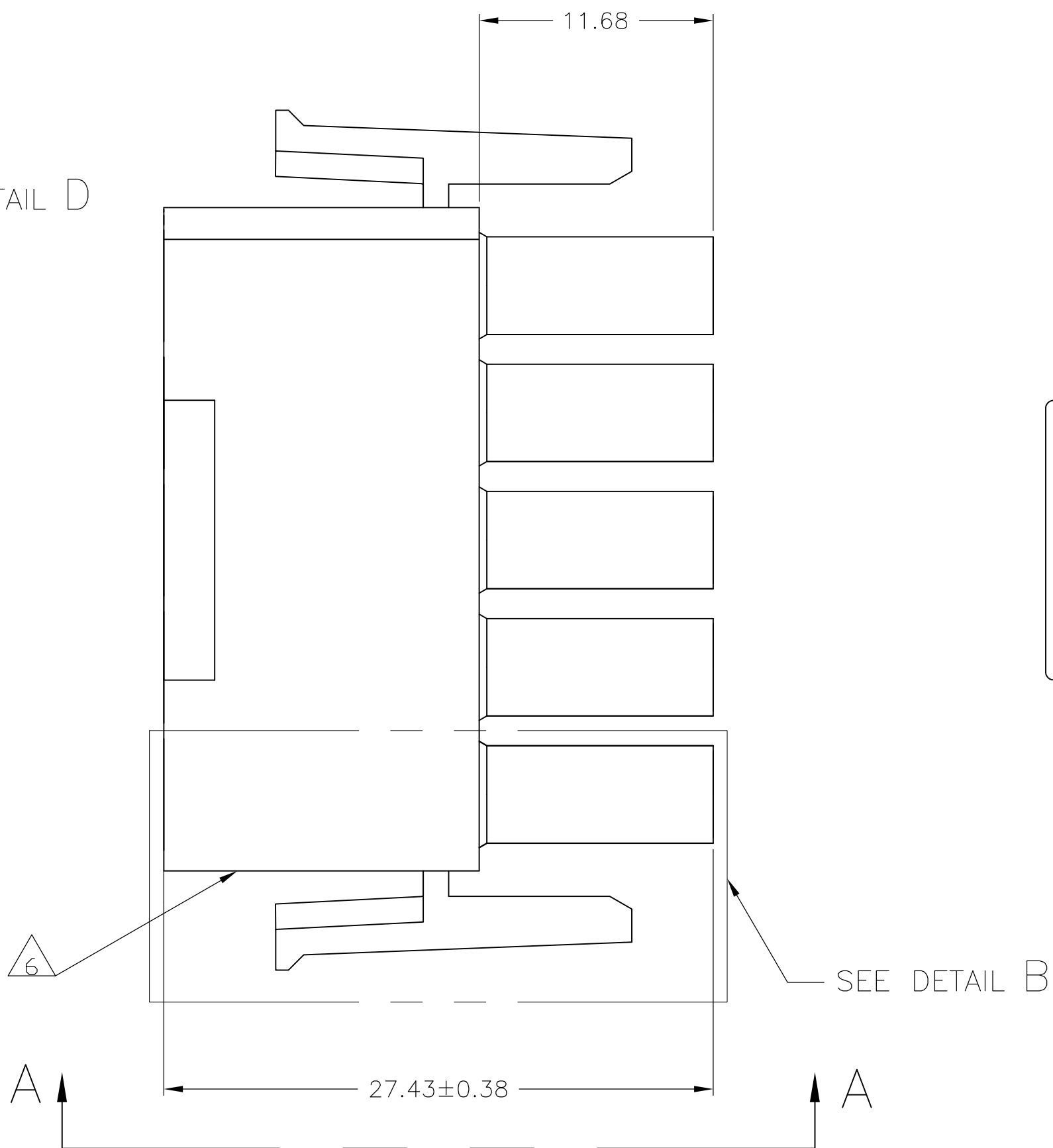
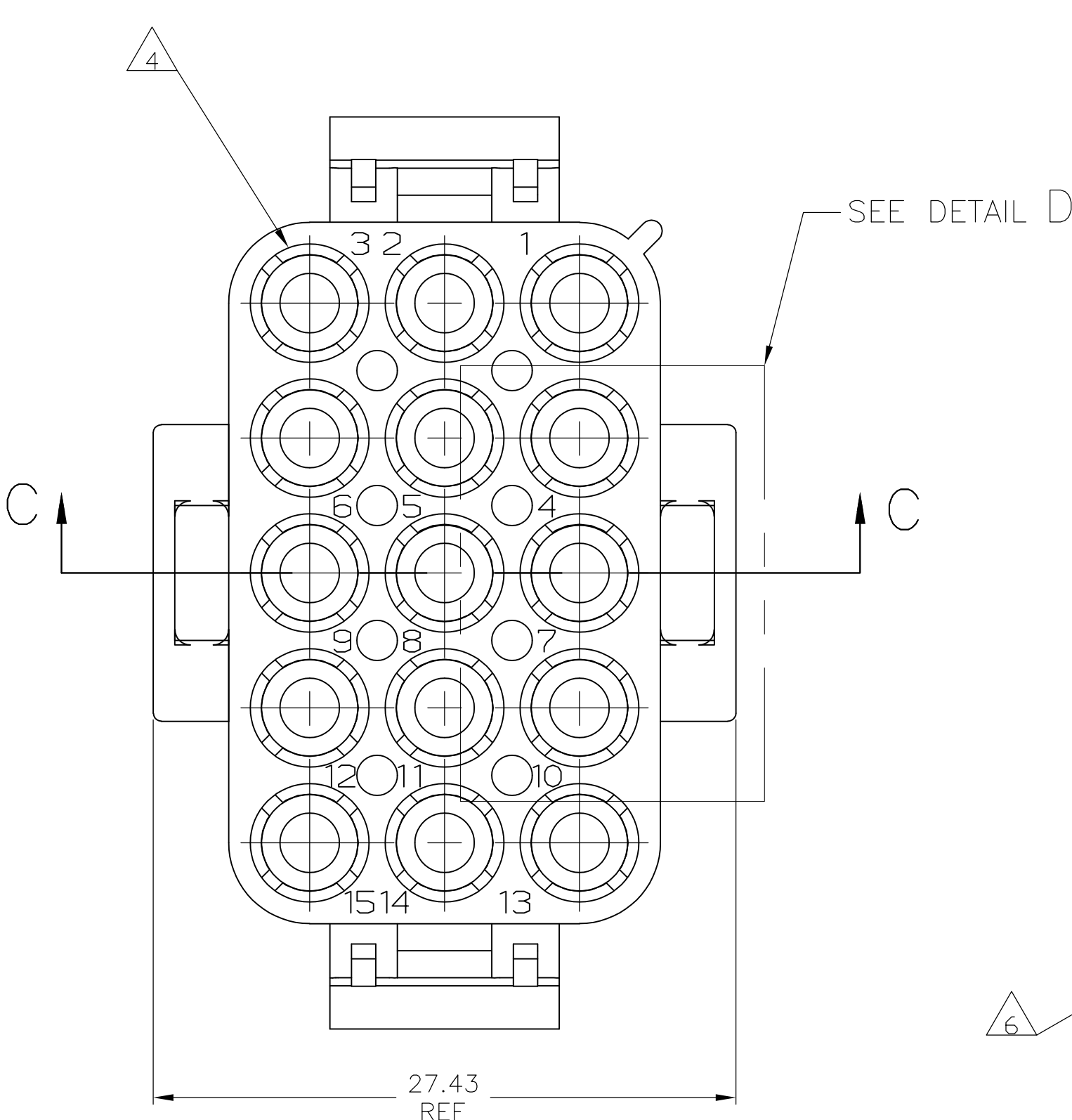
| LOC |   | DIST |    | REVISIONS                 |           |     |      |  |
|-----|---|------|----|---------------------------|-----------|-----|------|--|
| P   | F | L    | TR | DESCRIPTION               | DATE      | DWN | APVD |  |
|     |   |      |    |                           |           |     |      |  |
| CM  |   |      |    | 53                        |           |     |      |  |
|     | Y |      |    | REVISED PER ECR-17-006277 | 24MAY2017 | BW  | KR   |  |

D

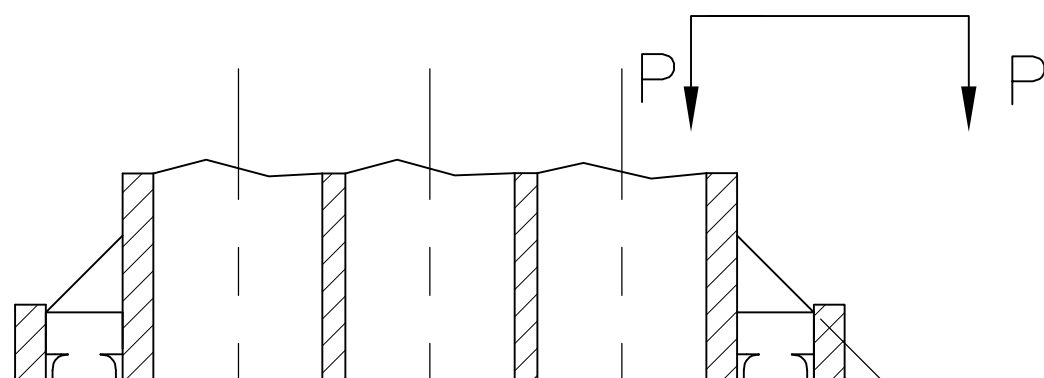
C

B

A

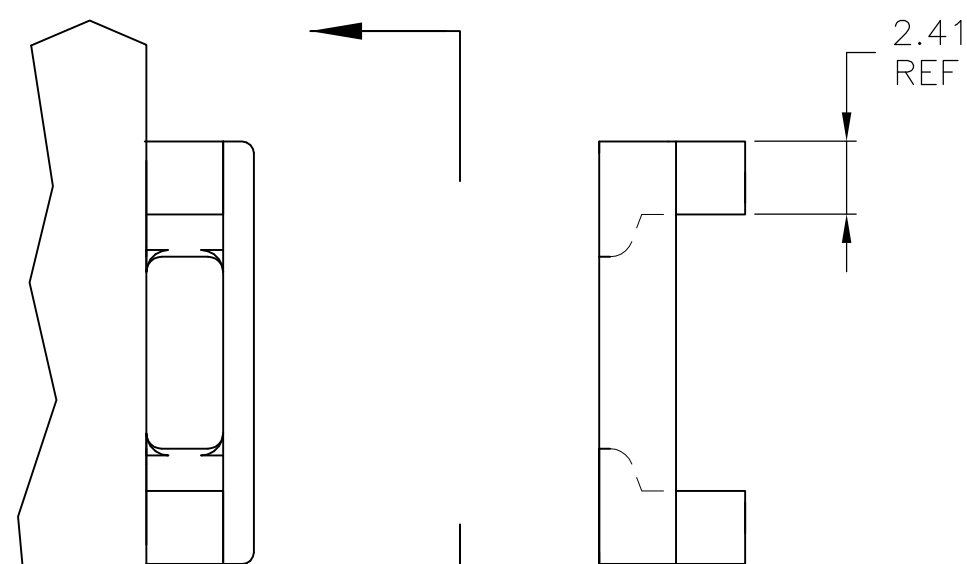


PARTIAL SECTION C-C

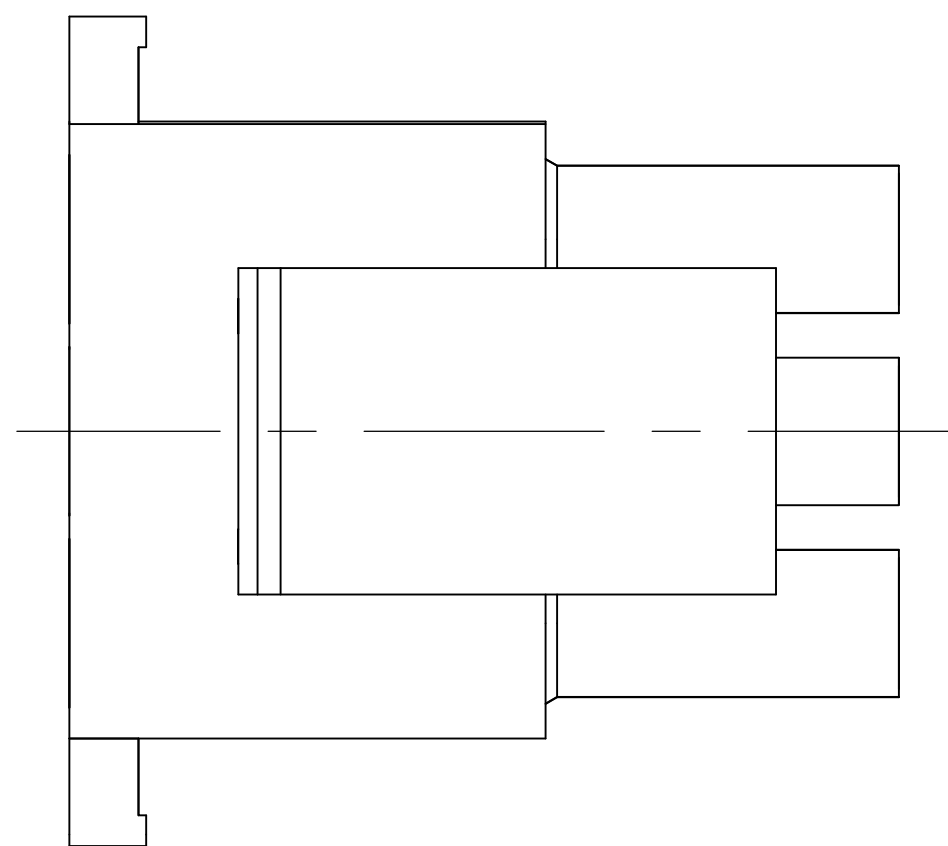


PARTIAL SECTION C-C  
OPTIONAL CONSTRUCTION

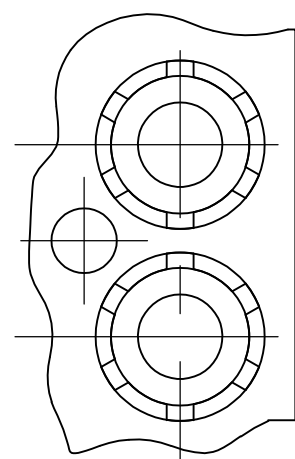
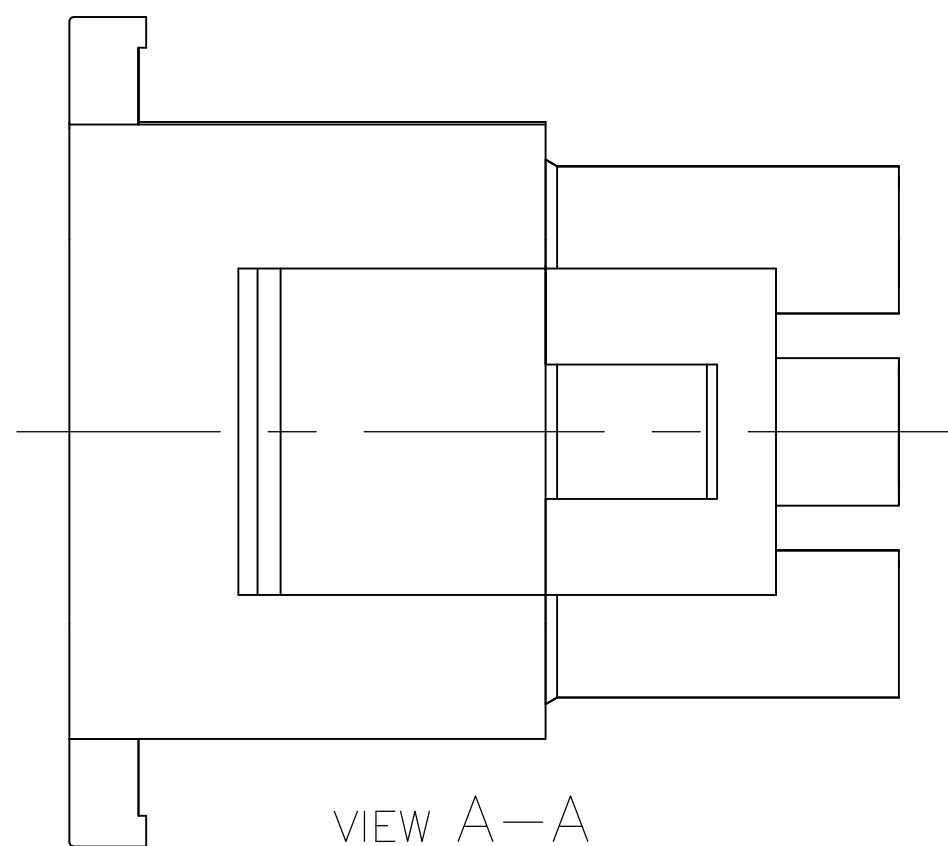
45°  
REF



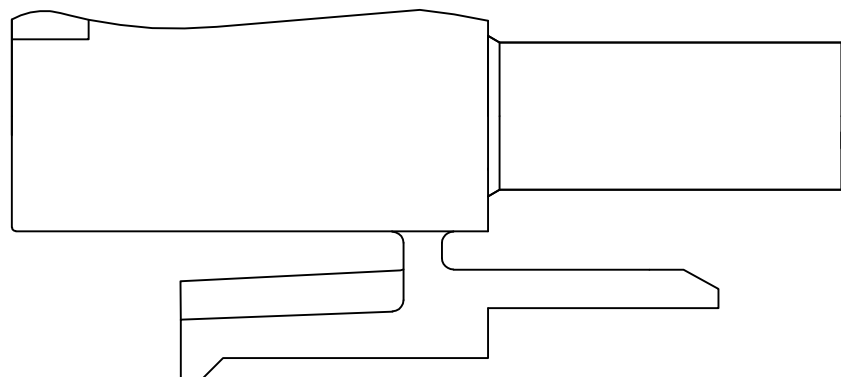
VIEW P  
OPTIONAL CONSTRUCTIONS



VIEW A-A  
350736-4 ONLY

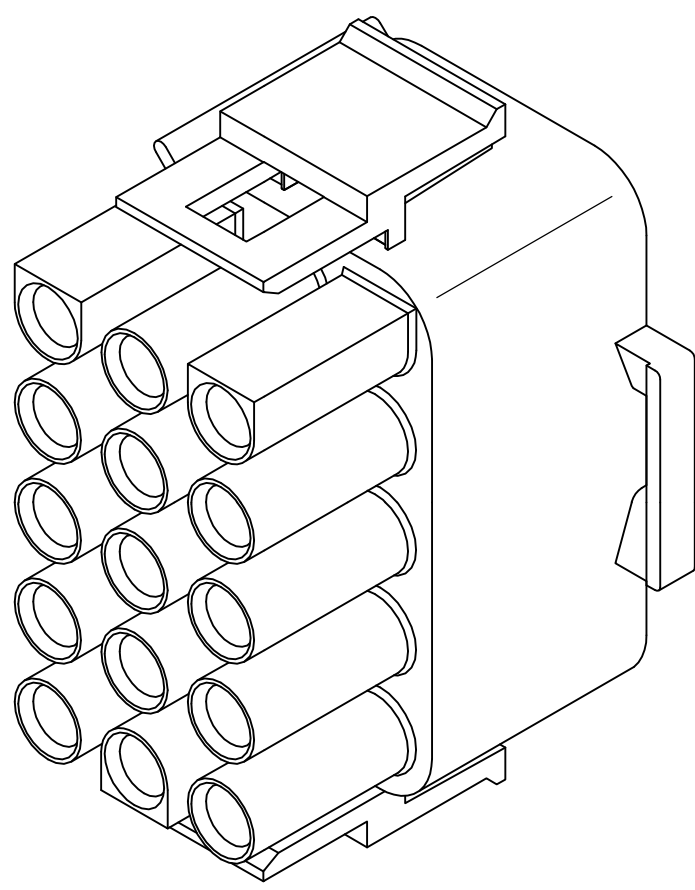


PARTIAL DETAIL D  
OPTIONAL CONSTRUCTION

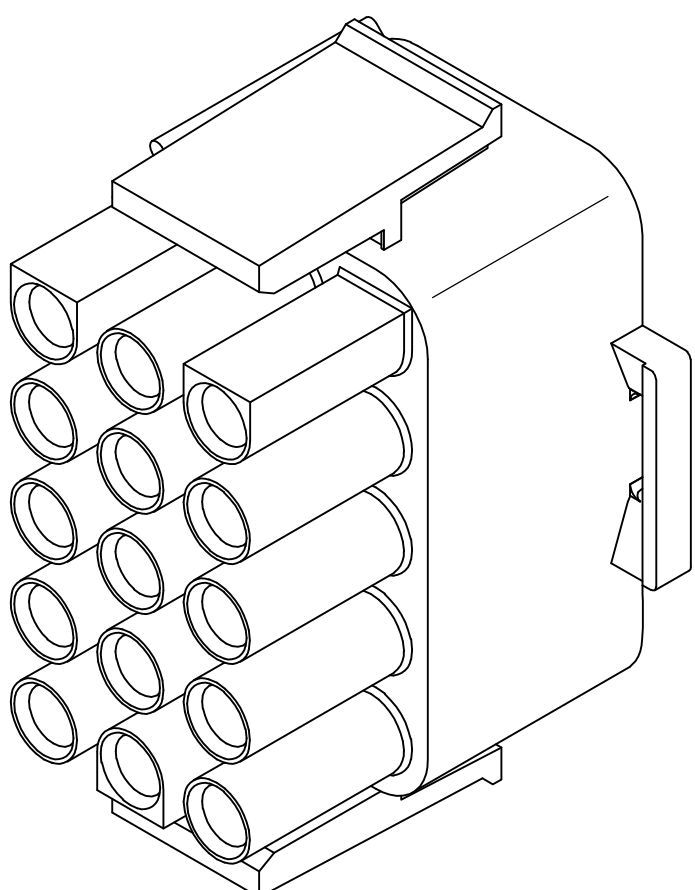


DETAIL B  
350736-4 ONLY

- 1 MATES WITH APPROPRIATE UNIVERSAL MATE-N-LOK™ CAP OR HEADER.
  - 2 SMALL NICKS ARE PERMITTED ON THE CIRCUIT TOWERS WHICH COULD INCREASE THE INITIAL HOUSING MATING FORCE BY UP TO 4.4 NEWTONS [1.0 LBS]. NO INDIVIDUAL NICKED TOWER SHALL INCREASE THIS FORCE BY OVER 2.2 NEWTONS [.5 LBS].
  - 3 DIMENSIONS SHOWN REPRESENT PRODUCT IN DRY, AS MOLDED, CONDITION. ADDITIONAL 2% GROWTH DUE TO SUBSEQUENT MOISTURE ABSORPTION MAY OCCUR AND SHOULD BE ACCOUNTED FOR.
- △ 4 FOUR RIBS EQUALLY SPACED, NO SPECIFIC ORIENTATION. OR SIX RIBS EQUALLY SPACED, NO SPECIFIC ORIENTATION, OPTIONAL.
- △ 5 NOT MANUFACTURED IN U.S.
- △ 6 UNDERWRITERS RECOGNIZED COMPONENT LOGO AND CSA CERTIFICATION LOGO TO BE LOCATED ONCE ON EACH SIDE OF HOUSING.



350736-4 3-DIMENSIONAL MODEL  
NTS



3-DIMENSIONAL MODEL  
NTS

|            |             |
|------------|-------------|
| BLACK      | 1-350736-9  |
| GRAY       | 1-350736-8  |
| BLUE       | 1-350736-6  |
| GREEN      | 1-350736-5  |
| YELLOW     | 1-350736-4  |
| ORANGE     | 1-350736-3  |
| RED        | 1-350736-2  |
| BROWN      | 1-350736-1  |
| △ 350736-4 |             |
| NATURAL    | 350736-1    |
| COLOR      | PART NUMBER |

|   |  |   |   |  |
|---|--|---|---|--|
| THIS DRAWING IS A CONTROLLED DOCUMENT.                        |  | DWN<br>K. WHITAKER<br>20FEB92                       | TE Connectivity                               |  |
| DIMENSIONS:<br>mm   |  | CHK<br>R. SWING<br>20FEB92                          | NAME  |  |
| TOLERANCES UNLESS OTHERWISE SPECIFIED:                        |  | APVD<br>D. SELF<br>24FEB92                          | PLUG,<br>15 CIRCUIT,<br>UNIVERSAL MATE-N-LOK™ |  |
| 0.015<br>1.015<br>2.015<br>3.015<br>4.015<br>ANGLES<br>FINISH |  | APPLICATION SPEC<br>—<br>—<br>—<br>—<br>—<br>—<br>— | SIZE<br>A1                                    |  |
| MATERIAL<br>NYLON, UL 94V-0                                   |  | WEIGHT  | 00779 350736                                  |  |
| CUSTOMER DRAWING  |  | SCALE<br>4:1  | SHEET<br>1 OF 1                               |  |