

RPM7200 Series

MIL/COTS AC, 1PH EMI Power Line Filter

**RPM7200
MILITARY/ COTS TO 50A
PERFORMANCE TO 10GHZ
MIL-STD-461/ DO-160**



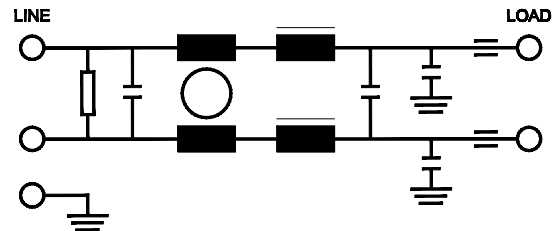
SPECIFICATIONS

Operating Freq.	:	50/60/400Hz
Max. Operating Voltage	:	300VAC
Ambient Temperature	:	-40 to 70C
Hipot Rating (L-G)	:	1800VDC
Terminals (-T)	:	S: M5 Studs
Typical Leakage Current	:	3.5mA/Line (250V/60Hz)
Applications	:	Mil-461/ DO-160
Note:		
* Call for other termination types (e.g. Circular Mil-Connectors, etc.)		
*Leakage Current is determined by the line to ground capacitors in the filter. The capacitors can be easily varied to match the system leakage requirements.		

**TYPICAL INSERTION LOSS, dB
(50/50ohm)**

FREQ (MHz)	.01	.15	.5	1	10	1000	10000
CM(dB)	20	38	50	60	70	70	70
DM(dB)	28	45	60	60	60	-	-

SCHEMATIC



PART NUMBER/ ORDERING

RPM7200	-X (Amps)	-T	Weight LBS (KG) Typ.
	5	S	1.4 (0.6)
	10		1.4 (0.6)
	25		4.0 (1.8)
	50		6.5 (3.0)

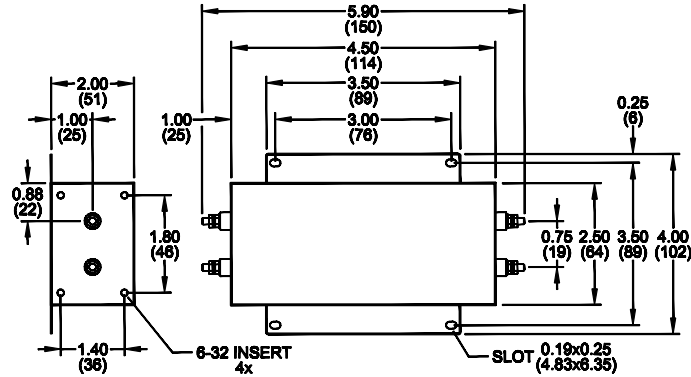
www.radiuspower.com

Reference purposes only.
Specifications are subject to change.
Consult factory to verify specifications.

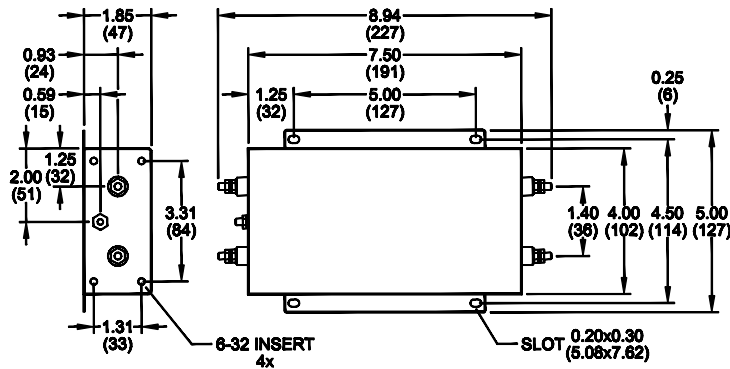
RPM7200

Mechanical Dimensions

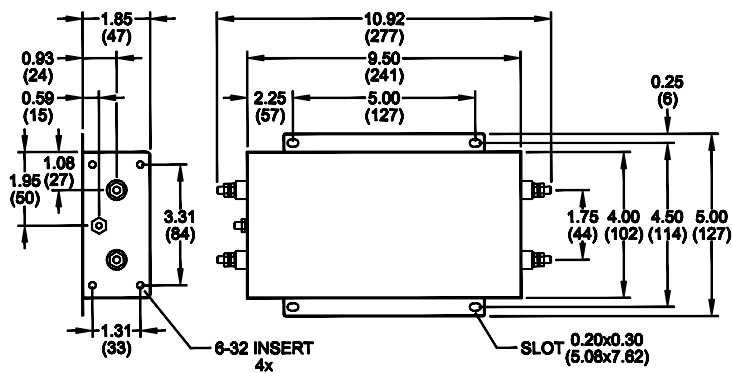
5/10Amp



25Amp



50Amp



TYPICAL TOLERANCE: +/-0.02 (0.50)

Reference purposes only.
Specifications are subject to change.
Consult factory to verify specifications.