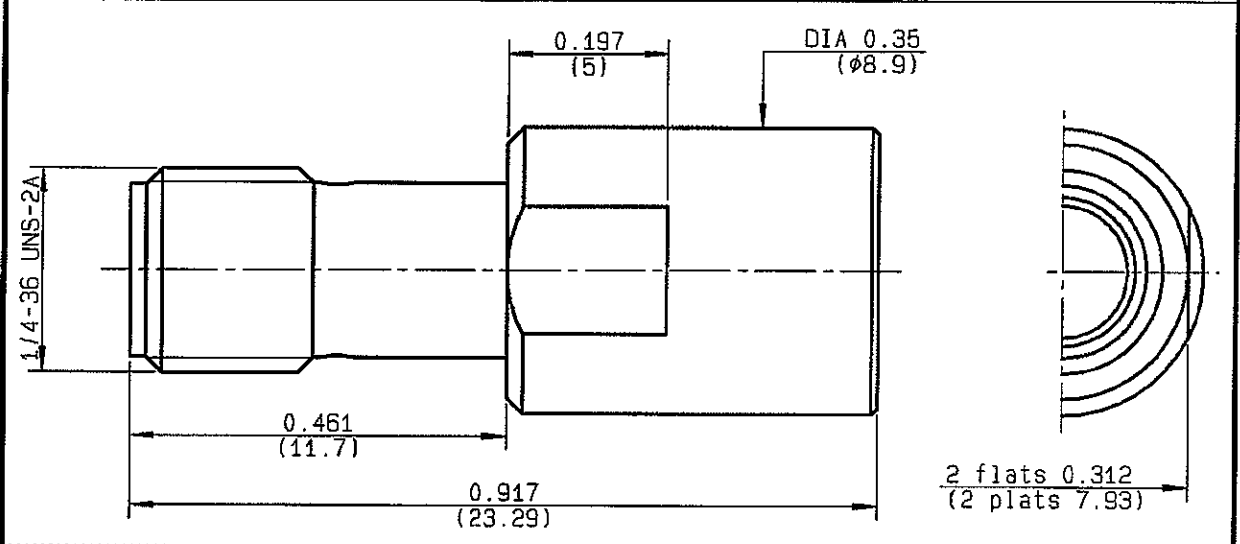


<b>MALE-FEMALE ADAPTOR PUSH-ON</b>	<b>R125.791.501</b>
	<b>SERIES SMA</b>



<table border="0"> <tr><td>NOMINAL IMPEDANCE</td><td style="text-align: center;"><b>50</b></td><td><math>\Omega</math></td></tr> <tr><td>FREQUENCY RANGE</td><td style="text-align: center;"><b>0-18</b></td><td>GHz</td></tr> <tr><td>TEMPERATURE RATING</td><td style="text-align: center;"><b>-65/+165</b></td><td>°C</td></tr> <tr><td>V.S.W.R</td><td colspan="2" style="text-align: center;"><b>1.08 + 0.01</b> x F(GHz)Maxi</td></tr> <tr><td>RF INSERTION LOSS</td><td colspan="2" style="text-align: center;"><b>0.07</b> <math>\sqrt{F}</math>(GHz) dB Maxi</td></tr> <tr><td>VOLTAGE RATING</td><td style="text-align: center;"><b>500</b></td><td>Veff Maxi</td></tr> <tr><td>DIELECTRIC WITHSTANDING VOLTAGE</td><td style="text-align: center;"><b>1000</b></td><td>Veff Mini</td></tr> <tr><td>INSULATION RESISTANCE</td><td style="text-align: center;"><b>5000</b></td><td>M <math>\Omega</math>Mini</td></tr> <tr><td>HERMETIC SEAL</td><td style="text-align: center;"><b>NA</b></td><td>Atm.cm<sup>3</sup>/s</td></tr> <tr><td>LEAKAGE (pressurized only)</td><td style="text-align: center;"><b>NA</b></td><td></td></tr> <tr><td>MECHANICAL DURABILITY</td><td style="text-align: center;"><b>500</b></td><td>Cycles</td></tr> <tr><td>WEIGHT</td><td></td><td>gr</td></tr> <tr><td>SPECIFICATION</td><td></td><td></td></tr> </table>	NOMINAL IMPEDANCE	<b>50</b>	$\Omega$	FREQUENCY RANGE	<b>0-18</b>	GHz	TEMPERATURE RATING	<b>-65/+165</b>	°C	V.S.W.R	<b>1.08 + 0.01</b> x F(GHz)Maxi		RF INSERTION LOSS	<b>0.07</b> $\sqrt{F}$ (GHz) dB Maxi		VOLTAGE RATING	<b>500</b>	Veff Maxi	DIELECTRIC WITHSTANDING VOLTAGE	<b>1000</b>	Veff Mini	INSULATION RESISTANCE	<b>5000</b>	M $\Omega$ Mini	HERMETIC SEAL	<b>NA</b>	Atm.cm <sup>3</sup> /s	LEAKAGE (pressurized only)	<b>NA</b>		MECHANICAL DURABILITY	<b>500</b>	Cycles	WEIGHT		gr	SPECIFICATION			<table border="0"> <tr><td colspan="2">CABLES :</td></tr> <tr><td colspan="2">OTHERS CHARACTERISTICS</td></tr> <tr><td>CABLE RETENTION</td><td style="text-align: right;"><b>NA</b> N Mini</td></tr> <tr><td>CENTER CONTACT RETENTION</td><td></td></tr> <tr><td style="padding-left: 20px;">Axial force - mating end</td><td style="text-align: right;"><b>27</b> N Mini</td></tr> <tr><td style="padding-left: 20px;">Axial force - opposite end</td><td style="text-align: right;"><b>27</b> N Mini</td></tr> <tr><td style="padding-left: 20px;">Torque</td><td style="text-align: right;"><b>2.8</b> cm.N Mini</td></tr> <tr><td colspan="2">RECOMMENDED TORQUES</td></tr> <tr><td style="padding-left: 20px;">Mating</td><td style="text-align: right;"><b>NA</b> cm.N</td></tr> <tr><td style="padding-left: 20px;">Panel nut</td><td style="text-align: right;"><b>NA</b> cm.N</td></tr> <tr><td style="padding-left: 20px;">Clamp nut</td><td style="text-align: right;"><b>NA</b> cm.N</td></tr> </table>	CABLES :		OTHERS CHARACTERISTICS		CABLE RETENTION	<b>NA</b> N Mini	CENTER CONTACT RETENTION		Axial force - mating end	<b>27</b> N Mini	Axial force - opposite end	<b>27</b> N Mini	Torque	<b>2.8</b> cm.N Mini	RECOMMENDED TORQUES		Mating	<b>NA</b> cm.N	Panel nut	<b>NA</b> cm.N	Clamp nut	<b>NA</b> cm.N
NOMINAL IMPEDANCE	<b>50</b>	$\Omega$																																																												
FREQUENCY RANGE	<b>0-18</b>	GHz																																																												
TEMPERATURE RATING	<b>-65/+165</b>	°C																																																												
V.S.W.R	<b>1.08 + 0.01</b> x F(GHz)Maxi																																																													
RF INSERTION LOSS	<b>0.07</b> $\sqrt{F}$ (GHz) dB Maxi																																																													
VOLTAGE RATING	<b>500</b>	Veff Maxi																																																												
DIELECTRIC WITHSTANDING VOLTAGE	<b>1000</b>	Veff Mini																																																												
INSULATION RESISTANCE	<b>5000</b>	M $\Omega$ Mini																																																												
HERMETIC SEAL	<b>NA</b>	Atm.cm <sup>3</sup> /s																																																												
LEAKAGE (pressurized only)	<b>NA</b>																																																													
MECHANICAL DURABILITY	<b>500</b>	Cycles																																																												
WEIGHT		gr																																																												
SPECIFICATION																																																														
CABLES :																																																														
OTHERS CHARACTERISTICS																																																														
CABLE RETENTION	<b>NA</b> N Mini																																																													
CENTER CONTACT RETENTION																																																														
Axial force - mating end	<b>27</b> N Mini																																																													
Axial force - opposite end	<b>27</b> N Mini																																																													
Torque	<b>2.8</b> cm.N Mini																																																													
RECOMMENDED TORQUES																																																														
Mating	<b>NA</b> cm.N																																																													
Panel nut	<b>NA</b> cm.N																																																													
Clamp nut	<b>NA</b> cm.N																																																													

CONNECTOR PARTS:	MATERIALS	FINISH <small>(all values are given in micrometers)</small>
BODY	STAINLESS STEEL	PASSIVATED .
OUTER CONTACT	BERYLLIUM COPPER	NICKEL 2
CENTER CONTACT	BERYLLIUM COPPER	GOLD 2.54 OVER NICKEL 2
INSULATOR	PTFE	-
GASKET		-
OTHERS PIECES		

<b>ISSUE</b> <b>0549 C</b>	<b>CREATION DATE</b> <b>12/04/1994</b>	<b>FILE PART-NUMBER</b> <b>94-0400-052</b>	
-------------------------------	---	---	--

The information given here is subject to change without notice. Design changes may be in order to improve the product.

*Connect to the future*

MASTRAND