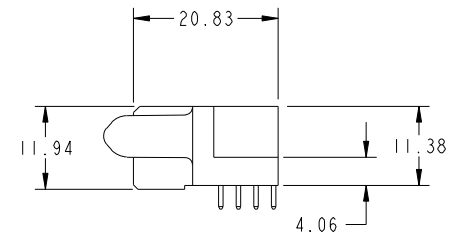
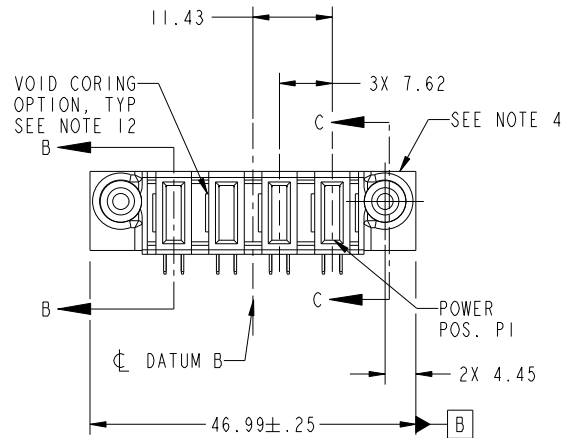


Tous droits strictement reserves. Reproduction ou communication a des tiers interdite sous quelque forme que ce soit sans autorisation écrite du propriétaire. Propriete de c FCI. Droits de reproduction FCI.



All rights strictly reserved. Reproduction or issue to third parties in any form whatever is not permitted without written authority from the proprietor. Property of FCI. Copyright FCI.

PRODUCT NO.	POWER					
	E2	P4	P3	P2	P1	E1
51915-155-- NOTE 3						



CODE	DIM "M" MATING LENGTH	CONTACT TYPE
PC	[2.34]	POWER

mat'l code				SEE NOTE 2		tolerances unless otherwise specified		CUSTOMER		FCI	
ltr	ecn no.	dr	date	linear	0.X ± 0.3	projection	0.XX ± 0.13	COPY		www.fciconnect.com	
A	DG08-0059	SH	03/13/08	angles	0.XXX ± 0.051		0° ± 2°	title		4ACP	
B	DG08-0095	SH	04/17/08	dr	Sincere He	03/04/08		product family		PwrBlade	
				enrg	Sincere He	03/04/08		size	dwg no		213
				chr	Gary Hsieh	03/04/08		scale	51915-155		sheet
				appd	Joseph Hsia	03/04/08		1:1	A		1 of 4
sheet index	revision sheet	B	B	B	B						
		1	2	3	4						

cage code 22526

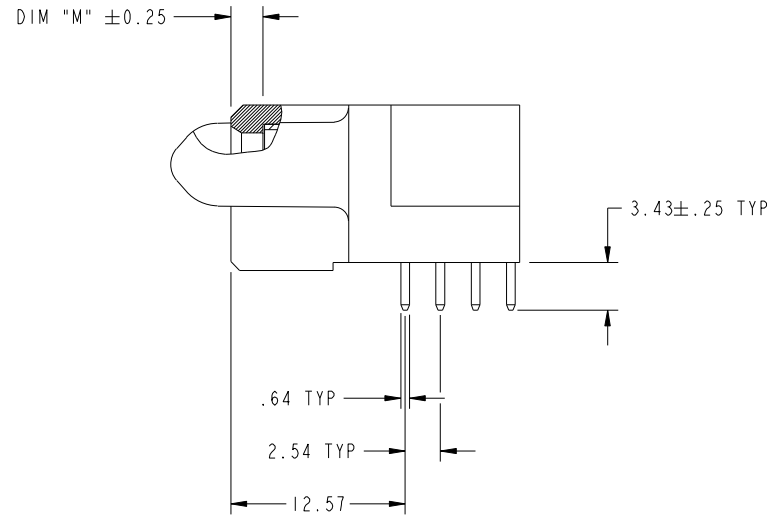
Pro/E

Tous droits strictement reserves. Reproduction ou communication a des tiers interdite sous quelque forme que ce soit sans autorisation écrite du propriétaire. Propriete de c FCI. Droits de reproduction FCI.

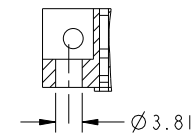
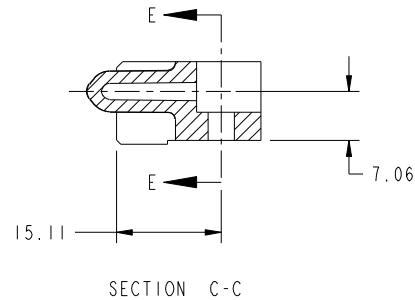


All rights strictly reserved. Reproduction or issue to third parties in any form whatever is not permitted without written authority from the proprietor. Property of FCI. Copyright FCI.

PRODUCT NUMBER  
51915-155-  
NOTE 3



BROKEN-OUT SECTION B-B  
SCALE 2:1



PARTIAL SECTION E-E

mat'l code		SEE NOTE 2		tolerances unless otherwise specified		CUSTOMER		 www.fciconnect.com	
ltr	ecn no.	dr	date	linear	0.X ±0.3	COPY		title	
B					0.XX ±0.13	projection		4ACP	
				angles	0.XXX ±0.051			R/A SOLDER RECEPTACLE	
				dr	0° ±2°			product family	PwrBlade
				enr	Sincere He 03/04/08	scale		size	code
				chr	Sincere He 03/04/08	1:1		dwg no	213
				appd	Gary Hsieh 03/04/08			A	51915-155
					Joseph Hsia 03/04/08				
sheet index	revision sheet								

cage code 22526

Pro/E

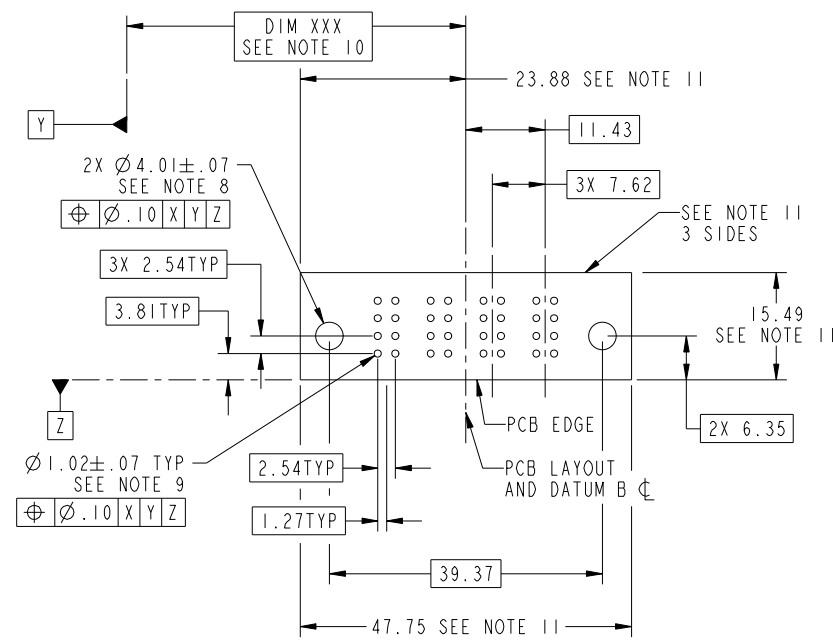
Tous droits strictement reserves. Reproduction ou communication a des tiers interdite sous quelque forme que ce soit sans autorisation écrite du propriétaire. Propriete de c FCI. Droits de reproduction FCI.

All rights strictly reserved. Reproduction or issue to third parties in any form whatever is not permitted without written authority from the proprietor. Property of FCI. Copyright FCI.



PRODUCT NUMBER  
51915-155-  
NOTE 3

1 | 2 | 3 | 4



RECOMMENDED PCB LAYOUT

mat'l code		SEE NOTE 2		tolerances unless otherwise specified		CUSTOMER		FCI	
ltr	ecr no.	dr	date	linear	0.X ± 0.3	COPY		www.fciconnect.com	
B					0.XX ± 0.13	projection		title	
				angles	0.XXX ± 0.051			4ACP R/A SOLDER RECEPTACLE	
				dr	Sincere He 03/04/08			product family PwrBlade code	
				enr	Sincere He 03/04/08	scale		size	
				chr	Gary Hsieh 03/04/08	1:1		dwg no 213	
				appd	Joseph Hsia 03/04/08			sheet 3 of 4	
sheet index	revision sheet							cage code 22526	

Pro/E | 3 | cage code 22526 | 4

A

A

B

B

Tous droits strictement réservés. Reproduction ou communication a des tiers interdite sous quelque forme que ce soit sans autorisation écrite du propriétaire. Propriete de c FCI. Droits de reproduction FCI.




All rights strictly reserved. Reproduction or issue to third parties in any form whatever is not permitted without written authority from the proprietor. Property of FCI. Copyright FCI.


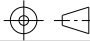
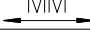
PRODUCT NUMBER  
51915-155--  
NOTE 3

NOTES:

1. DIMENSIONS AND TOLERANCES ARE IN ACCORDANCE WITH ASME Y14.5M, 1994 UNLESS OTHERWISE SPECIFIED.

CONNECTOR NOTES:

- 2. HOUSING MATERIAL: UL 94 V-0 GLASS FILLED  
HIGH-TEMP THERMOPLASTIC  
POWER CONTACT MATERIAL: COPPER ALLOY  
SIGNAL PIN MATERIAL: COPPER ALLOY
  - 3. PLATING:  
51915-155, 51915-155LF PLATING SPEC. WAS SHOWN IN THE PRINT OF 10064183.
  - 4. MANUFACTURER'S NAME, P/N, AND DATE CODE TO APPEAR ON THIS SURFACE.
  - 5. PRODUCT SPECIFICATION GS-12-149.  
APPLICATION SPECIFICATION BUS-20-067.
  - 6. PACKAGED IN TRAYS.
- PCB NOTES:
- 7. ALL HOLE DIAMETERS ARE FINISHED HOLE SIZE.
  - 8. MOUNTING HOLES, WHERE APPLICABLE, ARE UNPLATED.
  - 9.  $\varnothing 1.151 \pm 0.025$  DRILLED HOLES PLATED WITH  
0.008 MIN SnPb OR Sn OVER 0.03  
TO 0.08 Cu PLATING TO ACHIEVE  
 $\varnothing 1.02 \pm .07$  HOLE.
  - 10. "DIM XXX" TO BE DETERMINED BY THE CUSTOMER.
  - 11. CONNECTOR KEEP-OUT ZONE.
  - 12. THE VOID CORING IN BETWEEN POERT MODULES, SIGNAL MODULES AND END MODULES ARE OPRIIONAL AND THE SHAPE MAY BE DIFERENT FOR OPTIMIZE THE MOLDING PROCESS, THE VOID CORING WILL NO EFFECT TO PRODUCT FUNCTION.
  - 13: A  SYMBOL WILL BE NEXT TO ANY DIMENSIION, VIEW, OR NOTE WHICH HAS BEEN MODIFIED WITH CURRENT DRAWING REVISION.

mat'l code		SEE NOTE 2		tolerances unless otherwise specified		CUSTOMER				www.fciconnect.com	
ltr	ecr no.	dr	date	linear	0.X ± 0.3	COPY		title			
B					0.XX ± 0.13	projection		4ACP			
				angles	0.XXX ± 0.051			R/A SOLDER RECEPTACLE			
					0° ± 2°	MIM		product family		PwrBlade	code
				dr	Sincere He 03/04/08			size	dwg no		213
				enr	Sincere He 03/04/08	scale		A	51915-155		sheet
				chr	Gary Hsieh 03/04/08	1:1				4 of 4	
				appd	Joseph Hsia 03/04/08						
sheet index	revision sheet										

cage code 22526

Pro/E