
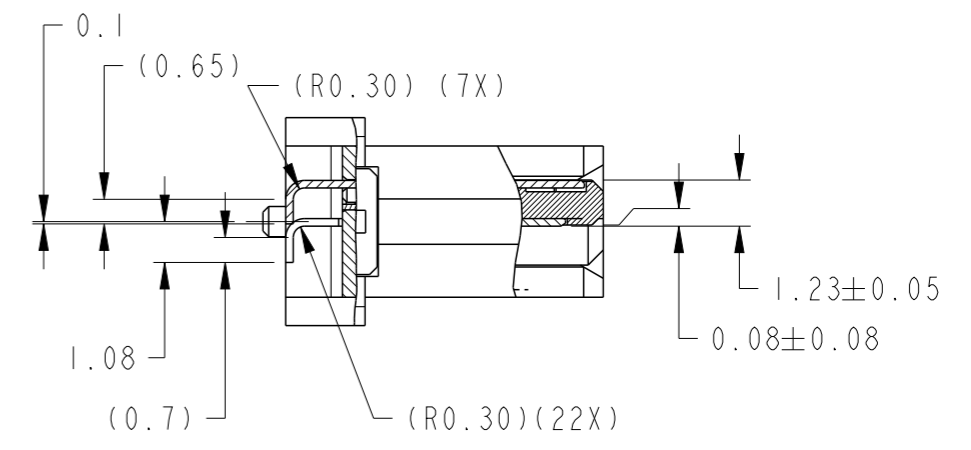
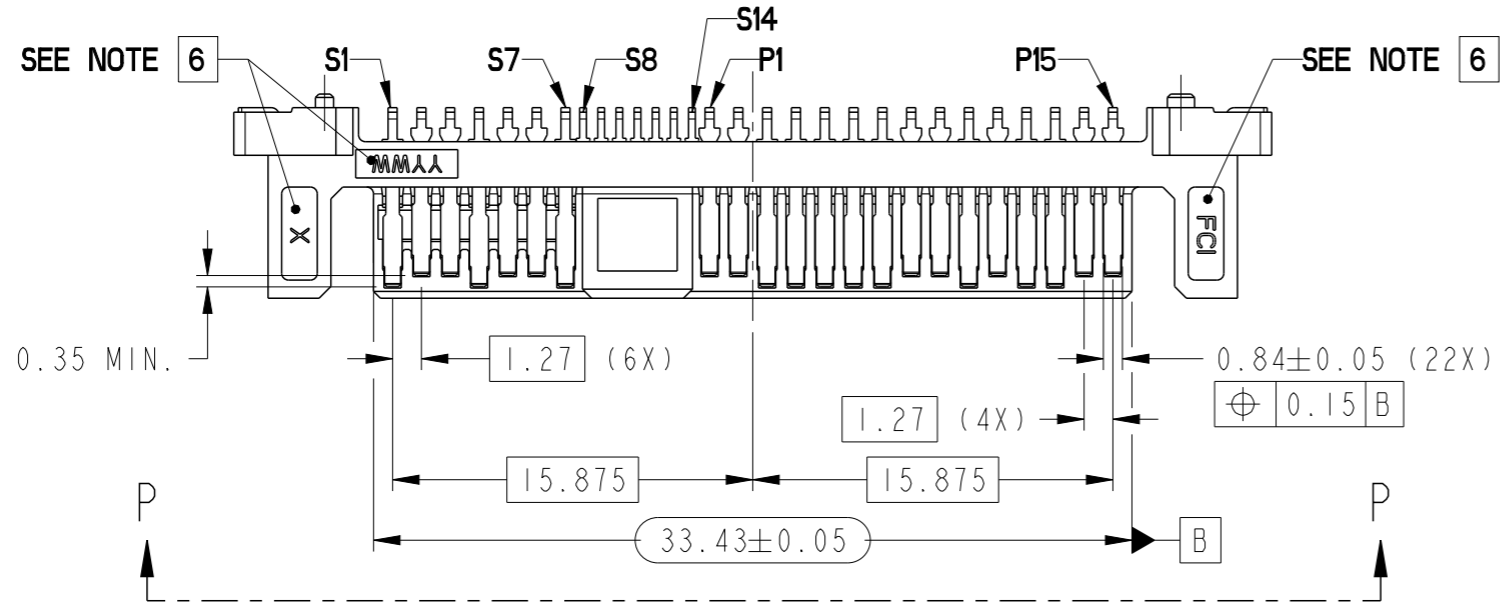
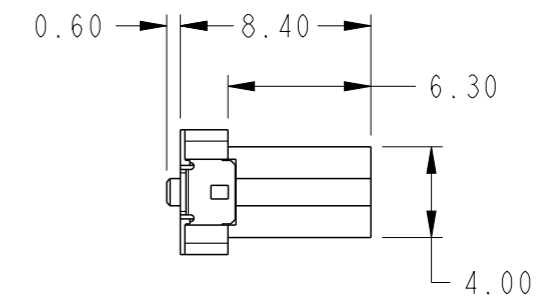
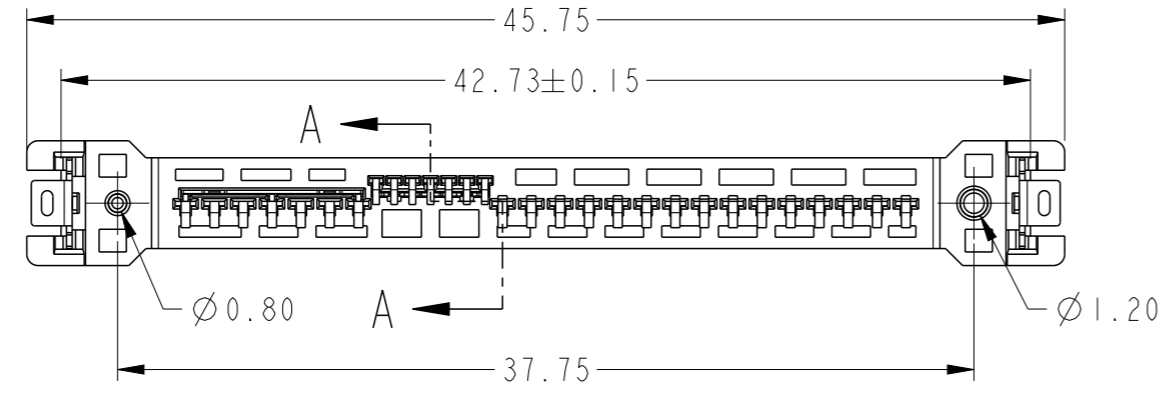
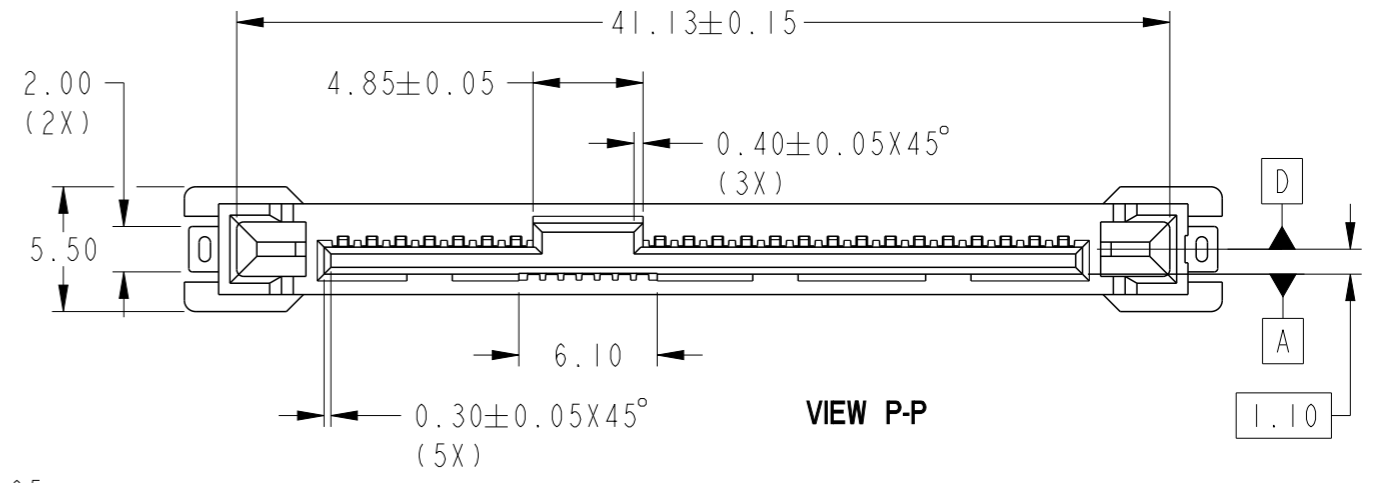
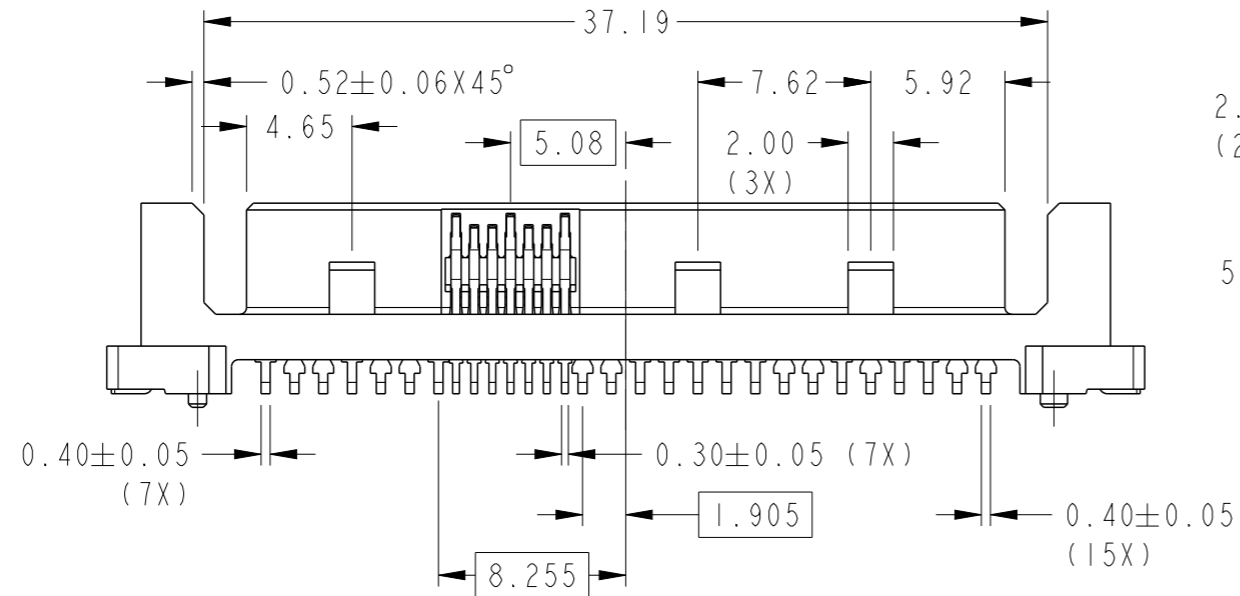
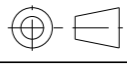


PRODUCT NUMBER  
 10131436-001LF  
 10131436-002LF 

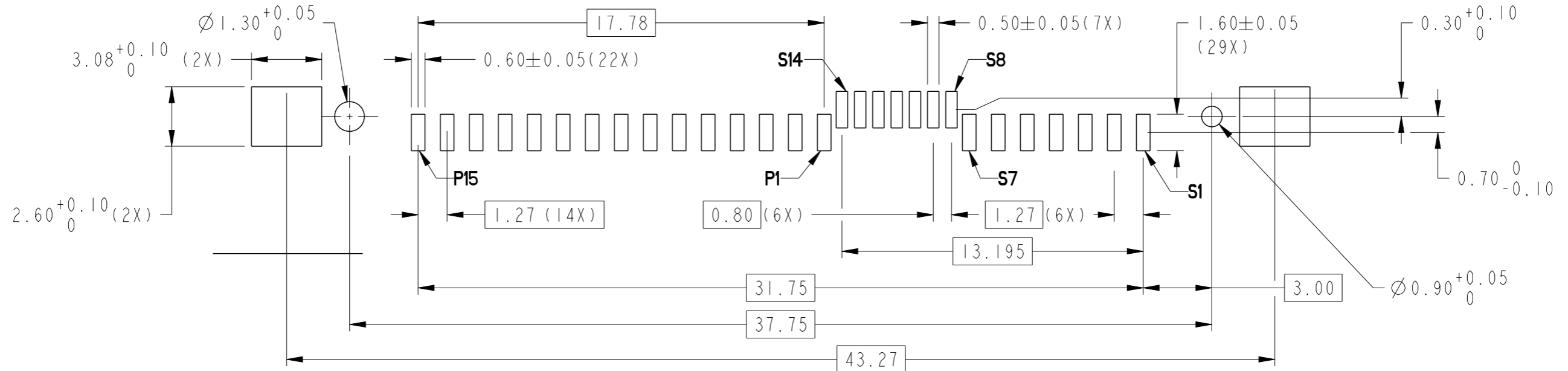


SECTION A-A  
 SCALE 5:1

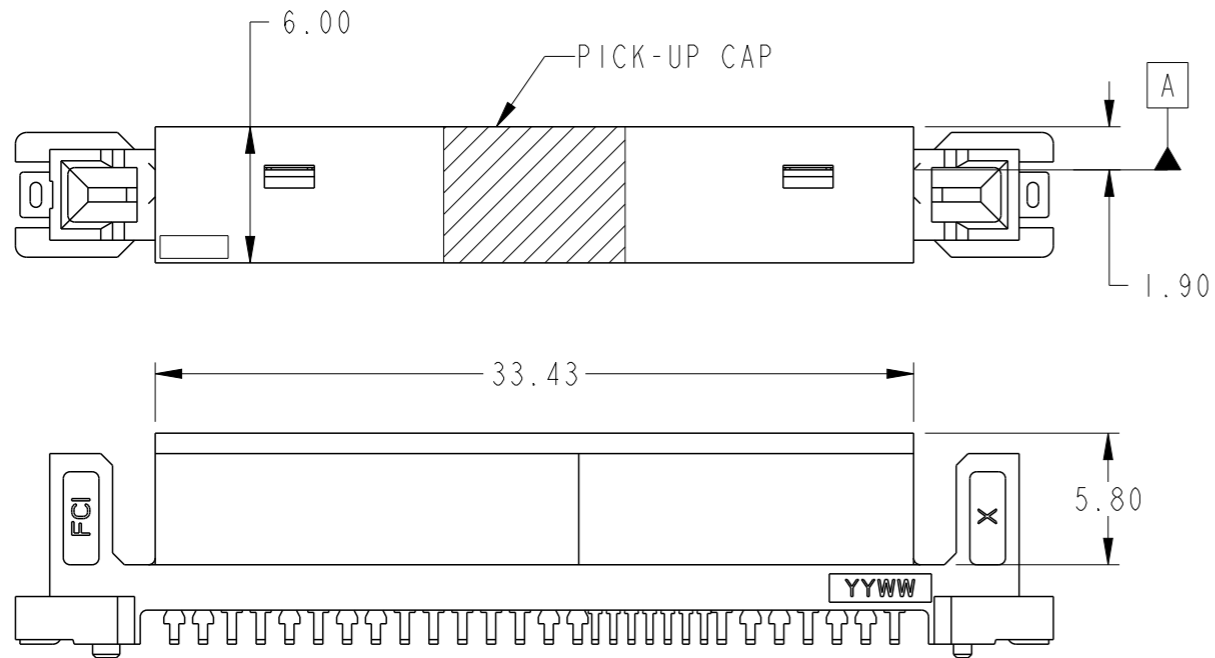
Amphenol FCI  
 © 2016 AFCI

spec ref	dr	S Paulpandian	2014/11/21	projection	MM	size	A3	scale	3:1
tolerance std	eng	Siew-Leong Lim	2016/06/03		← →	ecn no	ELX-S-24203-1	rel level	Released
ASME Y14.5	chr	-	-						
	appr	Koon-Poh Tay	2016/06/10	product family					
surface	linear	0.X	±0.40	Amphenol FCI	12G SAS PLUG VERTICAL SMT ASSY	dwg no	10131436	rev	B
		0.XX	±0.25						
		0.XXX	±						
ASME Y14.5	angular	0°	±5°	cat. no.	Product - Customer Drw	sheet 1 of 3			

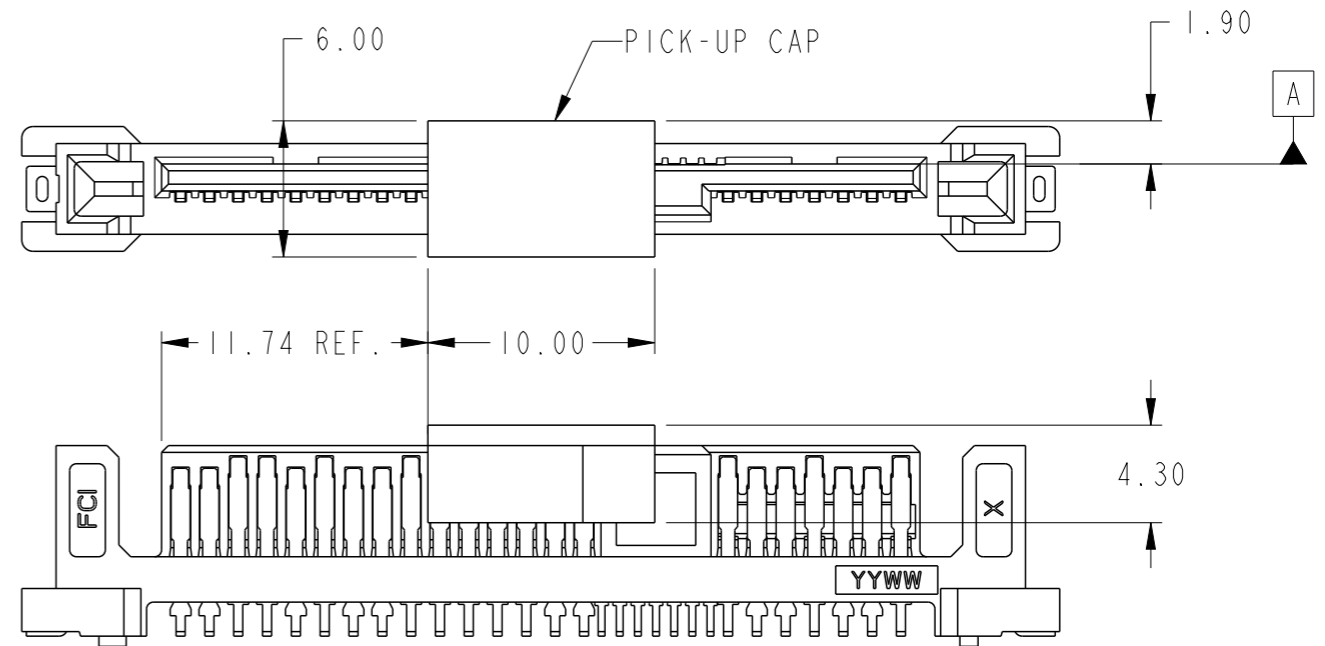
PRODUCT NUMBER  
SEE TABLE



SCALE 5:1  
RECOMMENDED SOLDER PAD LAYOUT



SCALE 3:1  
WITH PICK-UP CAP ATTACHED  
10131436-002



SCALE 3:1  
WITH PICK-UP CAP ATTACHED  
10131436-001

spec ref	dr	S Paulpandian	2014/11/21	projection	MM	size	A3	scale	3:1
tolerance std	eng	Siew-Leong Lim	2016/06/03			ecn no	ELX-S-24203-1	rel level	Released
ASME Y14.5	chr	-	-						
TOLERANCES UNLESS OTHERWISE SPECIFIED				product family					
surface	linear	0.X	±0.40	<b>Amphenol FCI</b>	12G SAS PLUG VERTICAL SMT ASSY	dwg no 10131436	rev B	Product - Customer Drw	
		0.XX	±0.25					sheet 2 of 3	
ASME Y14.5	angular	0°	±5°					cat. no.	

1

2

3

4

PRODUCT NUMBER	WITH PICK-UP CAP	PACKAGING	PLATING SPEC.
10131436-001LF / -002LF $\triangle_B$	NO	TRAY	SEE NOTE <span style="border: 1px solid black; padding: 0 2px;">2</span>
10131436-001CLF / -002CLF $\triangle_B$	YES		
10131436-001C-TRLF / -002C-TRLF $\triangle_B$		TAPE & REEL	

NOTES:

1. MATERIAL:  
HOUSING: HIGH TEMPERATURE PLASTIC, BLACK, UL94V-0  
CONTACT: COPPER ALLOY  
SOLDER TAB: COPPER ALLOY
2. FINISH:  
CONTACTS:  
1.27um~2.54um NICKEL UNDERPLATE OVERALL,  
2.54um~5.08um TIN (LEAD-FREE) ON SOLDER TAIL,  
0.76um MIN Au ON MATING AREA.  
SOLDER TAB:  
1.27um~2.54um NICKEL UNDERPLATE OVERALL,  
2.54um~5.08um TIN (LEAD-FREE) ON SOLDER TAIL,
3. THIS PRODUCT MEETS EUROPEAN UNION DIRECTIVES AND OTHER COUNTRY REGULATIONS AS DESCRIBED IN GS-47-004
4. THE HOUSING WILL WITHSTAND EXPOSURE TO 260°C PEAK TEMPERATURE FOR 10 SECONDS IN A CONVECTION, INFRA-RED OR VAPOR PHASE REFLOW OVEN
5. COPLANARITY FROM SEATING PLANE: 0.1mm MAX.
6. THE PART SHALL HAVE DATE CODE (YYWW), VENDOR LOGO AND CAVITY NUMBER SHOWN AT THIS AREA.
7. A SYMBOL  $\triangle_B$  WILL BE NEXT TO ANY DIMENSION, VIEW OR NOTE WHICH HAS BEEN MODIFIED WITH THE CURRENT DRAWING REVISION.

Amphenol FCI

© 2016 AFCI

spec ref		dr	S Paulpandian	2014/11/21	projection	MM	size	A3	scale	3:1
tolerance std		eng	Siew-Leong Lim	2016/06/03		← →	ecn no		ELX-S-24203-1	
ASME Y14.5		chr	-	-			rel level		Released	
surface		appr	Koon-Poh Tay	2016/06/10	product family			dwg no		10131436
ASME Y14.5		TOLERANCES UNLESS OTHERWISE SPECIFIED		Amphenol FCI			12G SAS PLUG		rev	
linear		0.X ±0.40		VERTICAL SMT ASSY			cat. no.		Product - Customer Drw	
0.XX ±0.25		0.XXX ±-		Product - Customer Drw			sheet 3 of 3		B	
angular		0° ±5°		Product - Customer Drw			sheet 3 of 3		B	

1

2

3

PDS: Rev :B

STATUS:Released

Printed: Jun 10, 2016