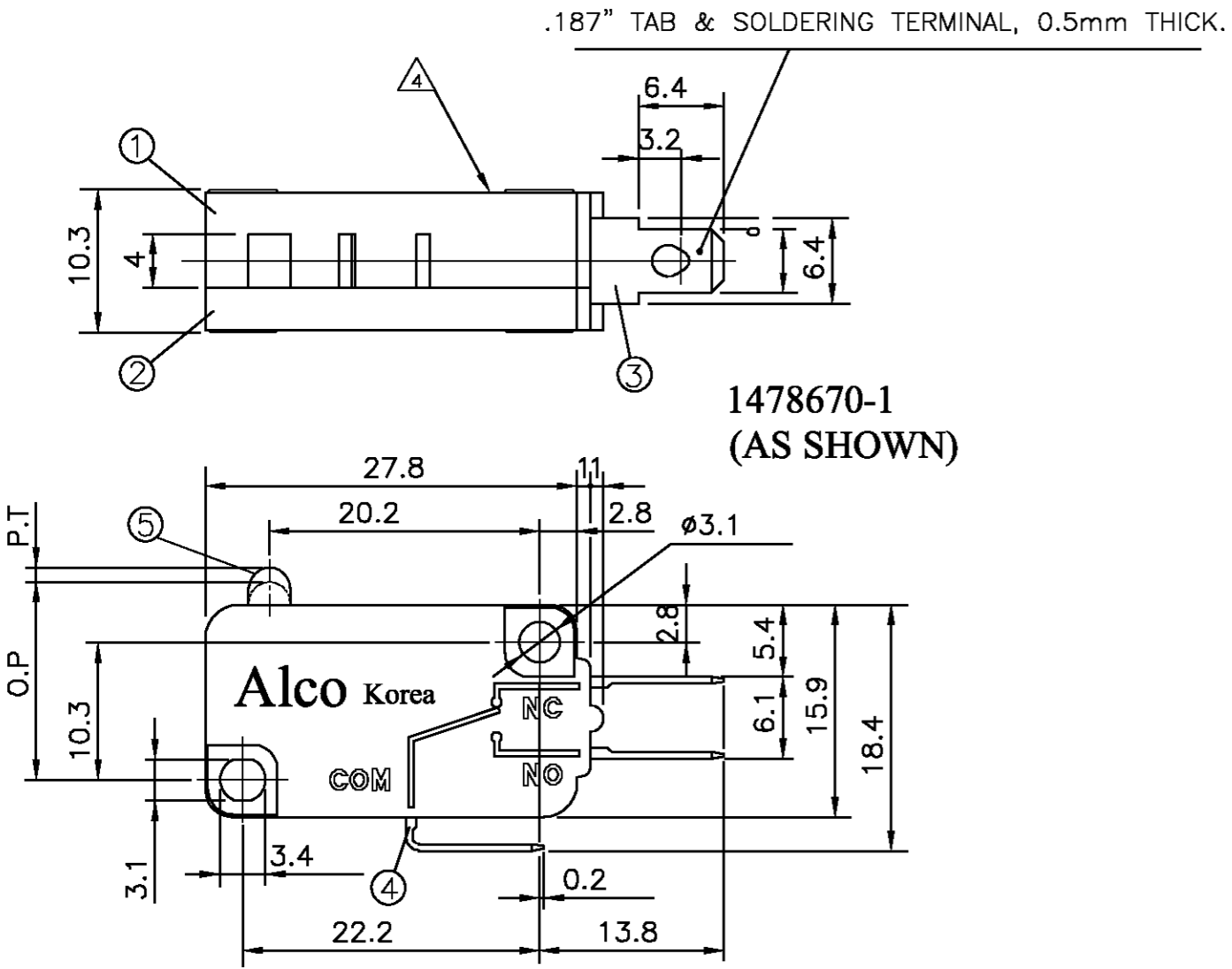


THIS DRAWING IS UNPUBLISHED. RELEASED FOR PUBLICATION
 © COPYRIGHT 2001 BY TYCO ELECTRONICS CORPORATION. ALL RIGHTS RESERVED.

Loc	DIST	REVISIONS					
		P	LTR	DESCRIPTION	DATE	DWN	APVD
E	B		E	EBD0-0129-03	09-06-03	SS	JA
			D	EB00-0025-03	04-02-03	PB	JA
			C	EB00-0308-02	23-09-02	SS	JA

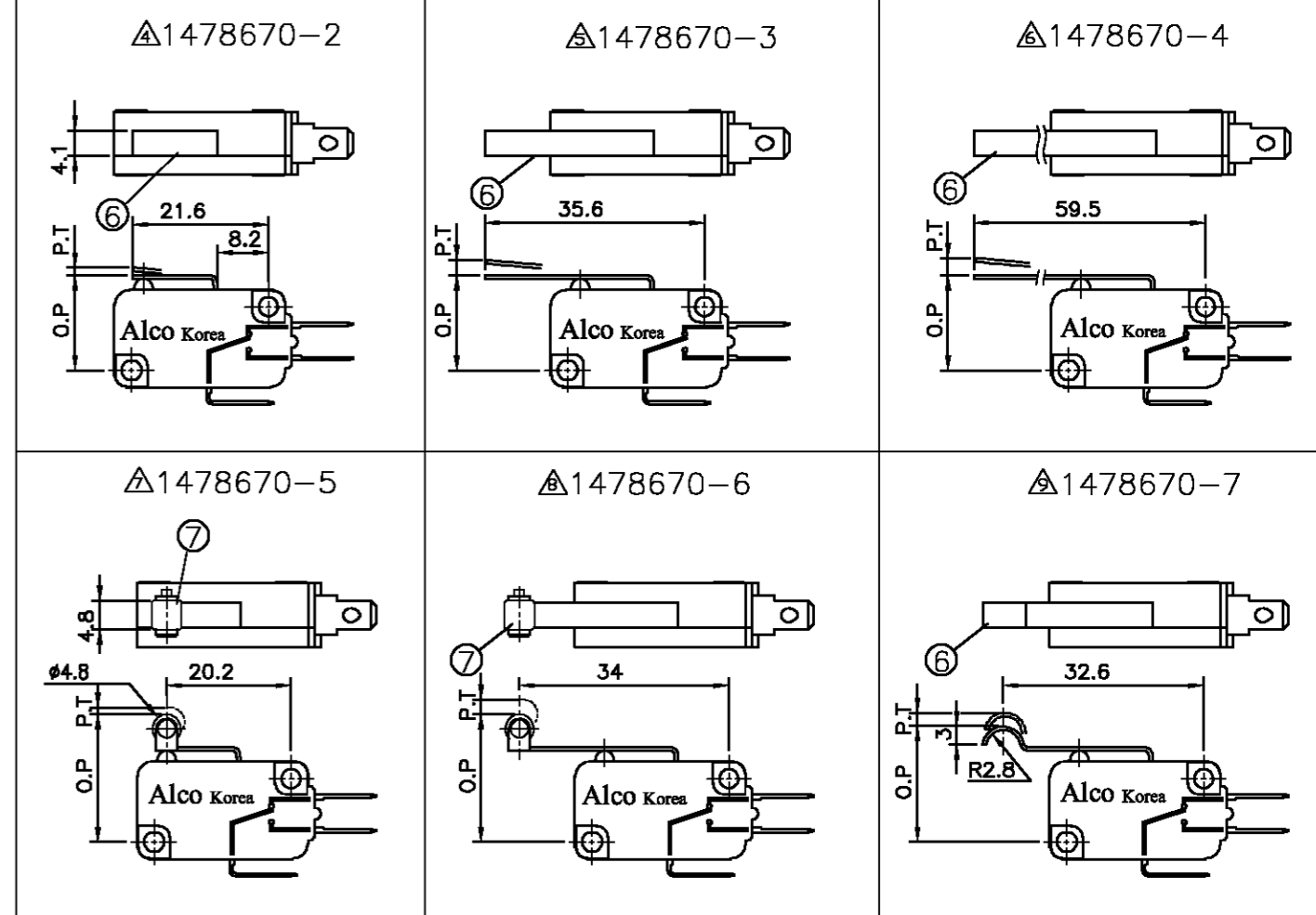
SPECIFICATION DATA

	Minature Range	
Amp Rating	16	5
Insulation Resistance	Min. 100M ohm	
Contact Resistance	Max 15 M ohm	Max 50 M ohm
Dielectric Strength	Between Non-consecutive terminals AC 2,000V	
Operating Speed	0.2mm/sec - 1,000mm/sec	1mm/sec - 500mm/sec
Max allowed Mechanical Open/Close Frequencies	600 Cycles/min	300 Cycles/min
Shock Resistance (Without Lever)	300mm/sec sq (approx 30G)	
Vibration Resistance (Without Lever)	1.5mm 10-55 Hz (2Hr)	1.5mm 10 - 20Hz (2 Hr)
Electrical Life	100,000 Operations at Rated Load (Max 20 Operations/min)	1,000,000 Operations
Mechanical Life	10,000,000 Operations (Max 200 operations/min)	
Safety Approval	UL / CSA / VDE	
Operating Temperature Range	-20 deg C to 130 deg C RH85% Max	-30 deg C to 130 deg C RH90% Max
UL File No.	E60363	
CSA File No	218582	
VDE File No.	40006699	40006698



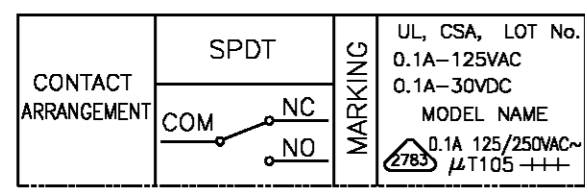
1478670-1
(AS SHOWN)

NO	DRAWING NO	△	CHARACTERISTICS					
			Operating Force	Releasing Force	Pre Travel	Operating Position	Over Travel	Movement Differential
1	1478670-1	—	Max 60 g	Min 12 g	Max 1.6 mym	14.8 ±0.4 mym	Min 0.8 mym	Max 0.4 mym
2	1478670-2	△	60 g	12 g	1.6 mym	15.4 ±0.4 mym	0.8 mym	0.4 mym
3	1478670-3	△	35 g	6 g	4.0 mym	15.4 ±1.4 mym	1.3 mym	1.2 mym
4	1478670-4	△	15 g	3 g	7.5 mym	15.4 ±3.0 mym	2.6 mym	2.4 mym
5	1478670-5	△	60 g	12 g	1.6 mym	20.7 ±0.8 mym	0.8 mym	0.4 mym
6	1478670-6	△	35 g	6 g	4.0 mym	20.7 ±1.6 mym	1.3 mym	1.2 mym
7	1478670-7	△	35 g	6 g	4.0 mym	18.6 ±1.5 mym	1.3 mym	1.2 mym



NOTES:

- FOR TECHNICAL DATA REFER TO YOUR LOCAL TYCO ELECTRONICS SALES OFFICE.
- ALL DIMENSIONS ARE NOMINAL. FOR REFERENCE ONLY UNLESS OTHERWISE STATED.
- ALL DIMENSIONS ARE COMMON TO THE MAIN BODY. VARIATIONS ARE IN THE OPERATING LEVERS.
- TYCO PART NUMBER AND LOT No. INKJET MARKED IN THIS AREA.
- GENERAL INFO.



6 FOR PACKAGING INFORMATION SEE SPEC. 107-115

7	ROLLER	(1)
6	LEVER	(1)
5	BUTTON	1
4	COMMON TERMINAL	1
3	TERMINAL	1
2	COVER	1
1	BOX	1
NO	PART NAME	Q'TY

TYCO SALES PART No.	TYCO PART NO.	DESCRIPTION	COLOUR	QTY	PACK DESC
MP01-DT-ASMM	1478670-7	Microswitch, Simu Lever	Grey	1000	CARTON
MP01-DT-ANRM	1478670-6	Microswitch, Norm Roller	Grey	800	CARTON
MP01-DT-ASRB	1478670-5	Microswitch, Short Roller	Grey	1000	CARTON
MP01-DT-ALLL	1478670-4	Microswitch, Long Lever	Grey	600	CARTON
MP01-DT-ANLM	1478670-3	Microswitch, Norm Lever	Grey	800	CARTON
MP01-DT-ASLB	1478670-2	Microswitch, Short Lever	Grey	1000	CARTON
MP01-DT-AOLB	1478670-1	Microswitch, Pin Plunger	Grey	1000	CARTON

THIS DRAWING IS A CONTROLLED DOCUMENT.

DWN	P.Bates	04FEB2003
CHK	C.Kaminski	17-10-01
APVD	C.Kaminski	17-10-01

tyco Electronics Tyco Electronics Corporation
Stanmore, Middlesex, HA7 4RS

NAME: MICRO SWITCH 0.1A
SOLDER TERMINAL
60g RANGE

SIZE	A2	CAGE CODE	00779	DRAWING NO	C=1478670	RESTRICTED TO	—
WEIGHT	—	SCALE	1:1	SHEET	1 OF 2	REV	E

CUSTOMER DRAWING

THIS DRAWING IS UNPUBLISHED. RELEASED FOR PUBLICATION
 © COPYRIGHT 2001 BY TYCO ELECTRONICS CORPORATION. ALL RIGHTS RESERVED.

LOC		DIST		REVISIONS			
P	LTR	DESCRIPTION	DATE	DWN	APVD		
E	B	EBD0-0129-03	09-06-03	SS	JA		

MAJOR COMPONENT & MATERIAL LIST

NO	PART NAME	MATERIAL	Q'ty	UL FRAME	FINISH (COLOR)
1	CASE	P.B.T RESIN	1	94 V-0	
2	COVER		1		
3	MOVABLE CONTACTOR	Phosphor Bronze Sheet t=0.3	1		
4	GUIDE PLATE	Brass Sheet t=0.8	1		SILVER PLATING
5	COMMON TERMINAL	Brass Sheet t=0.8	1		SILVER PLATING
6	PLATE SPRING	Beryllium Copper Sheet (t=0.1~ 0.25)	1		
7	TERMINAL AID	Brass Sheet (t=0.8)	0		
8	CONTACT	Au alloy	4		
9	TERMINAL	Brass Sheet (t=0.8)	2		
10	ACTUATOR	PHENOLIC RESIN	1	94 V-0	
11	LEVER	Stainless SteelSheet (t=0.6)	(1)		

() = Where Applicable

THIS DRAWING IS A CONTROLLED DOCUMENT.		DWN S.Shackson 09JUN2003	Tyco Electronics Corporation Stanmore, Middlesex, HA7 4RS	
DIMENSIONS: MM		CHK F.Wheeler-King 09JUN2003	NAME MICRO SWITCH 0.1A SOLDER TERMINAL 60g RANGE	
TOLERANCES UNLESS OTHERWISE SPECIFIED:		APVD F.Wheeler-King 09JUN2003	SIZE A2	CAGE CODE 00779
0 PLC ± - 1 PLC ± - 2 PLC ± - 3 PLC ± - 4 PLC ± - ANGLES ± -		PRODUCT SPEC -	DRAWING NO C=1478670	RESTRICTED TO -
MATERIAL -		FINISH -	WEIGHT -	SCALE 1:1
CUSTOMER DRAWING			SHEET 2	OF 2
			REV E	