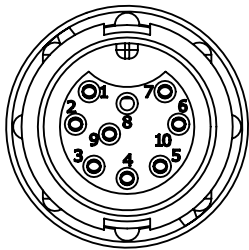


NOTES:

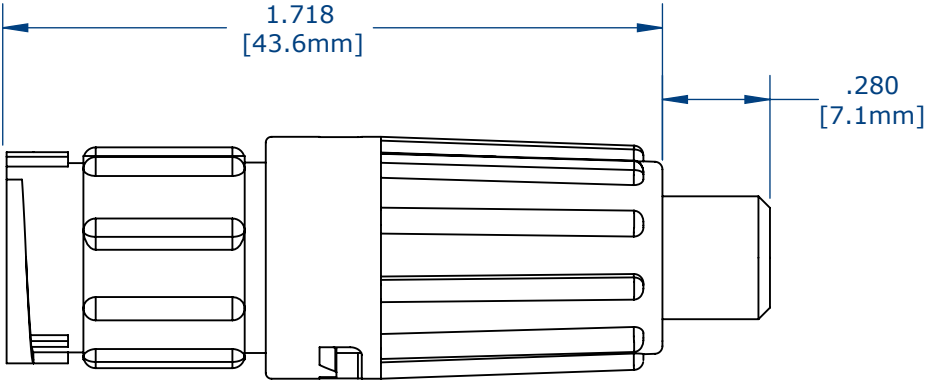
- 1. PARTS ARE TO BE BULK PACKED
- 2. CRIMP CONTACTS ARE NOT ASSEMBLED INTO CONNECTOR.
- 3. ALL DIMENSIONS ARE FOR REFERENCE ONLY.

KIT PART NO.	CABLE OD.
X8880-9PG-522	.220-.250 [5.6-6.4mm]
X8880-9PG-528	.265-.285 [6.7-7.2mm]

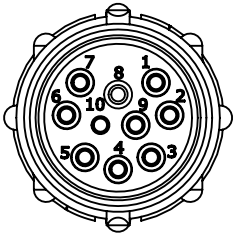
NO. OF CONTACTS — GROMMET SIZES



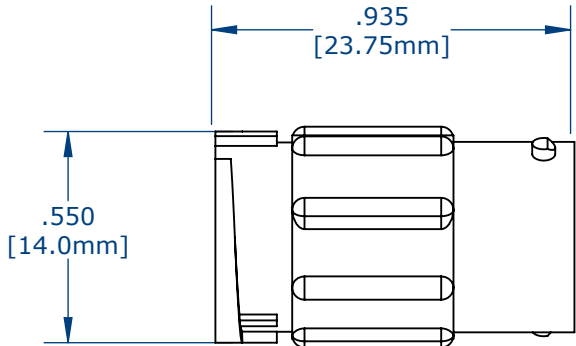
FACE VIEW



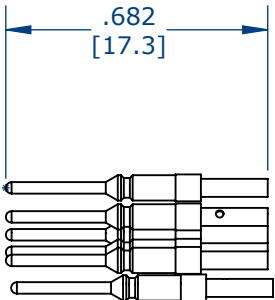
ASSEMBLED KIT VIEW
W8882-9PG-522 SHOWN



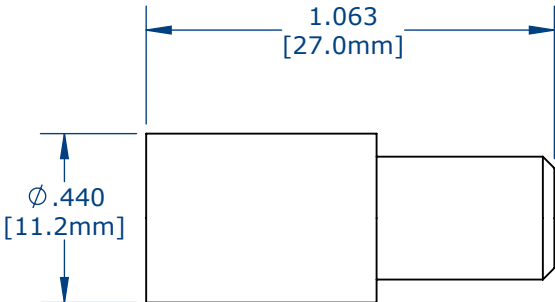
WIRE VIEW



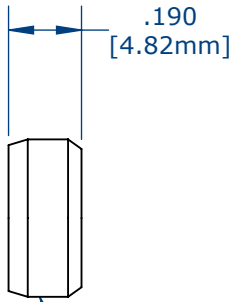
IN LINE CONNECTOR



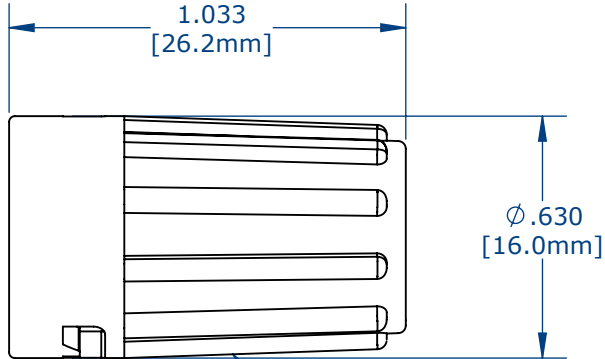
#22 SOCKET CONTACTS, CRIMP



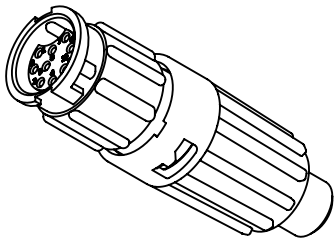
GROMMET, LONG



CABLE GRIP



BACKSHELL, LONG



ASSEMBLED KIT
FOR CUSTOMER REFERENCE


CUSTOMER DRAWING

CUSTOMER APPROVAL

THIS DOCUMENT CONTAINS CONFIDENTIAL INFORMATION PROPRIETARY TO CONXALL CORPORATION. ANY REPRODUCTION, DISCLOSURE, OR USE OF THIS DOCUMENT /INFORMATION IS EXPRESSLY PROHIBITED UNLESS AUTHORIZED IN WRITING BY CONXALL CORPORATION.

APPROVED BY: _____

DATE: _____

0A	AM	08/09/16	FIRST DRAWN	
REV.	INIT.	DATE	DESCRIPTION	
	AM	08/9/16	ORIG. DRAWN BY: DATE: AM 08/9/16	 601 E. WILDWOOD VILLA PARK, IL 60181
			CHECKED BY:	
			APPROVED BY:	TITLE: IN-LINE CONNECTOR, KIT (9) # 22 PIN CONTACT, CRIMP MINI-CON-X STANDARD PRODUCT
			SCALE NTS SIZE B SHEET 1 OF 1	
			FILE: DIRECTORY: SLW	CUSTOMER: PART NUMBER: W8880-9PG-5XX
				REV 0A