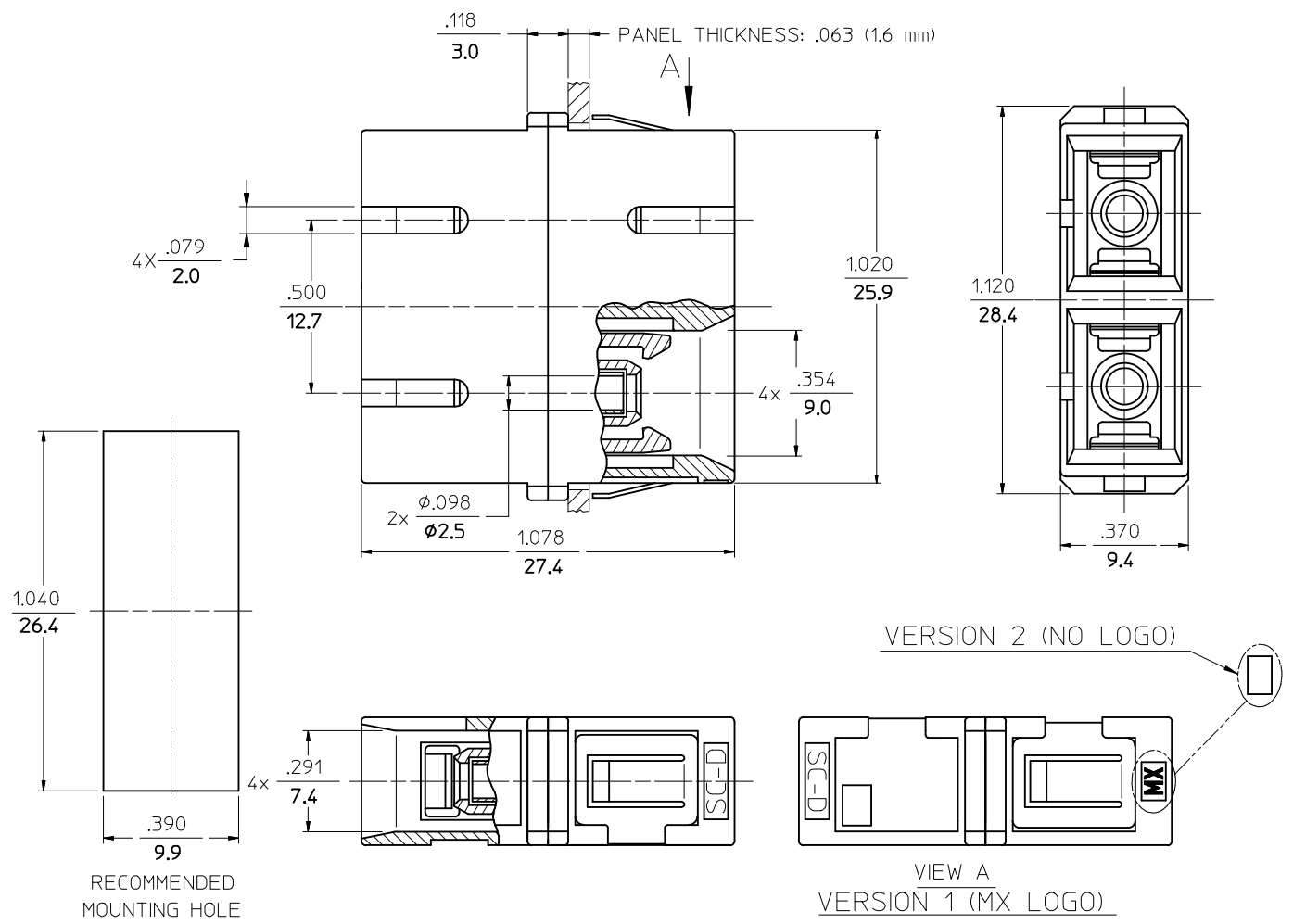


P/N OF ADAPTER	MATERIAL OF SLEEVE	TYPE	COLOR	LOGO
106166-0100	Zr	SINGLE MODE	BLUE	MX
106166-0103	Zr			
106166-0120	Zr			
106167-0100	PHOSPHOR BRONZE	MULTIMODE	BEIGE	MX
*106167-0185			AQUA	
106166-0110	Zr	MULTIMODE	BLACK	MX
106167-0110	PHOSPHOR BRONZE			
106167-0180	Zr			
106166-0130	PHOSPHOR BRONZE	SINGLE MODE	RED	MX
106167-0130	Zr			
106166-0140	PHOSPHOR BRONZE	APC	GREEN	NONE
106167-0140	Zr			
106166-0150	PHOSPHOR BRONZE	SINGLE MODE	BLUE	NONE
*106166-0152			Zr	
*106166-0191	PHOSPHOR BRONZE	MULTIMODE	AQUA	MX
106167-0150			BEIGE	
*106166-0185	Zr	SINGLE MODE	BLUE	NONE
*106166-0190	Zr	SINGLE MODE	BLUE	NONE
*106167-9110	PHOSPHOR BRONZE	MULTIMODE	AQUA	MX
*106167-0190			BEIGE	MX
*106167-0200			BEIGE	NONE



NOTES:
 1. P/NS STARTING WITH THE (*) ARE BULK PACKED IN QUANTITIES OF 100pcs.
 2. DUST CAPS ARE NOT SHOWN BUT INCLUDED.

ENTER DESCRIPTION EC NO: MF2010-0028 DR: WANKPEVNER CHKD: 2009/07/23 APPR: LGUMIN 2009/07/23	QUALITY SYMBOLS	GENERAL TOLERANCES (UNLESS SPECIFIED)	DIMENSION STYLE	SCALE	DESIGN UNITS	THIRD ANGLE PROJECTION
	▽=0 ∇=0	mm INCH 4 PLACES ± --- ± --- 3 PLACES ± --- ± --- 2 PLACES ± --- ± --- 1 PLACE ± --- ± --- ANGULAR ±1/2°	IN/MM	1:1	INCH	
	DRAFT WHERE APPLICABLE MUST REMAIN WITHIN DIMENSIONS	DRAWN BY: PGIBLIN DATE: 2005/10/07 CHECKED BY: _____ DATE: _____ APPROVED BY: _____ DATE: _____	TITLE	DUPLEX ADAPTER (SC-D, FLANGELESS)		
		MATERIAL NO. SEE TABLE SIZE B	DOCUMENT NO. SD-10616Y-01Y0 SHEET NO. 1 OF 1	MOLEX INCORPORATED		