

»» Features



- 10 general purpose Power Relay.
- Contact rating up to 12A 250VAC (DPNO).
- Epoxy sealed type and flux free.
- Quick connect terminal or PCB terminal available.
- Special version of larger contact gap 1.9mm.
(IEC 255/VDE 0436) (DPNO Only)
- Optional to be equipped with lamp, stud, diode, flashed contact, and flanged cover.

»» Type List

Terminal style	Contact form	Designation (provided with)	Enclosure style			
			Straight cover	Flanged cover	Sealed type	Sealed type washable
Quick terminal	DPDT	-----	SCL-DPDT	SCL-DPDT-C1	SCL-DPDT-V	SCL-DPDT-S
	DPNO	-----	SCL-DPNO	SCL-DPNO-C1	SCL-DPNO-V	SCL-DPNO-S
	DPDT	Diode	SCL-D-DPDT	SCL-D-DPDT-C1	SCL-D-DPDT-V	SCL-D-DPDT-S
	DPNO	Diode	SCL-D-DPNO	SCL-D-DPNO-C1	SCL-D-DPNO-V	SCL-D-DPNO-S
	DPDT	Stud	SCL-G-DPDT	SCL-G-DPDT-C1	SCL-G-DPDT-V	SCL-G-DPDT-S
	DPNO	Stud	SCL-G-DPNO	SCL-G-DPNO-C1	SCL-G-DPNO-V	SCL-G-DPNO-S
	DPDT	Lamp	SCL-L-DPDT	SCL-L-DPDT-C1	SCL-L-DPDT-V	SCL-L-DPDT-S
	DPNO	Lamp	SCL-L-DPNO	SCL-L-DPNO-C1	SCL-L-DPNO-V	SCL-L-DPNO-S
PCB terminal	DPDT	-----	SCL-1-DPDT	SCL-1-DPDT-C1	SCL-1-DPDT-V	SCL-1-DPDT-S
	DPNO	-----	SCL-1-DPNO	SCL-1-DPNO-C1	SCL-1-DPNO-V	SCL-1-DPNO-S
	DPDT	Diode	SCL-1-D-DPDT	SCL-1-D-DPDT-C1	SCL-1-D-DPDT-V	SCL-1-D-DPDT-S
	DPNO	Diode	SCL-1-D-DPNO	SCL-1-D-DPNO-C1	SCL-1-D-DPNO-V	SCL-1-D-DPNO-S
	DPDT	Stud	SCL-1-G-DPDT	SCL-1-G-DPDT-C1	SCL-1-G-DPDT-V	SCL-1-G-DPDT-S
	DPNO	Stud	SCL-1-G-DPNO	SCL-1-G-DPNO-C1	SCL-1-G-DPNO-V	SCL-1-G-DPNO-S
	DPDT	Lamp	SCL-1-L-DPDT	SCL-1-L-DPDT-C1	SCL-1-L-DPDT-V	SCL-1-L-DPDT-S
	DPNO	Lamp	SCL-1-L-DPNO	SCL-1-L-DPNO-C1	SCL-1-L-DPNO-V	SCL-1-L-DPNO-S
	DPDT	Manual	SCL-1-M-DPDT	SCL-1-M-DPDT-C1	-----	-----
	DPNO	Manual	SCL-1-M-DPNO	SCL-1-M-DPNO-C1	-----	-----

»» Ordering Information

SCL - 1 - L - DPDT - F - C1
 1 2 3 4 5 6

1. SCL -- Basic series designation (1.0 mm thick)

2. Blank -- Quick terminal

1 -- PCB terminal



3. Blank -- Without special features
 L -- Provided with pilot light
 D -- Diode across coil
 G -- Provided with stud secured to base
 M -- Provided with manual operator
 H -- 2 mm contact gap (For DPNO and DC coil type only)
4. DPDT -- Double pole double throw
 DPNO -- Double pole normally open
5. Blank -- Standard type
 F -- Class F
6. Blank -- Straight cover
 C1 -- Flanged cover
 V -- Sealed type
 S -- Sealed type washable

»» Contact Rating

Resistive load	10A 240VAC , 10A 28VDC
----------------	------------------------

»» Coil Rating (DC)

◆ Standard Type

Rated voltage (V)	Rated current ±10 % at 23 °C (mA)	Coil resistance ±10 % at 23 °C (Ω)	Max. continuous voltage at 70 °C	Pick up voltage(Max) at 23 °C	Drop out voltage(Min) at 23 °C	Power consumption at rated voltage
6	150	40	110 % of rated voltage	75 % of rated voltage	10 % of rated voltage	approx. 0.9W
9	100	90				
12	75	160				
15	60	250				
24	37	650				
48	19	2600				
60	15	4000				
110	10	11000				
120	11	11000				

◆ SCL-H Type

Rated voltage (V)	Rated current ±10 % at 23 °C (mA)	Coil resistance ±10 % at 23 °C (Ω)	Max. continuous voltage at 70 °C	Pick up voltage(Max) at 23 °C	Drop out voltage(Min) at 23 °C	Power consumption at rated voltage
3	400	7.5	115 % of rated voltage	80 % of rated voltage	10 % of rated voltage	approx. 1.2W
6	200	30				
9	133.3	67.5				
12	100	120				
24	50	480				
48	25	1920				
60	20	3000				
100	12	8330				
110	10.9	10080				
120	10	12000				

»» Coil Rating (AC)

Rated voltage (V)	Coil resistance $\pm 10\%$ at 23 °C (Ω)	Max. continuous voltage at 70 °C	Pick up voltage(Max) at 23 °C	Drop out voltage(Min) at 23 °C	Power consumption at rated voltage
12	40	110 % of rated voltage	85 % of rated voltage	30 % of rated voltage	approx. 1.2VA
24	160				
100	3400				
110	3400				
115	3400				
120	3400				
220	13600				
230	13600				
240	13600				

»» Specification

Contact material	AgCdO alloy	
Contact resistance ⁽¹⁾	30 m Ω Max.	
Operate time ⁽¹⁾	25 ms Max.	
Release time ⁽¹⁾	25 ms Max.	
Insulation resistance ⁽¹⁾	100 M Ω Min. (DC 500V)	
Dielectric strength ⁽¹⁾	Between open contact	: AC 1000V , 50/60Hz 1 min.
	Between contact and coil	: AC 1500V , 50/60Hz 1 min.
	Between contact circuits	: AC 1500V , 50/60Hz 1 min.
Vibration resistance	Operating extremes	10~55Hz , amplitude 1.0 mm
	Damage limits	10~55Hz , amplitude 1.0 mm
Shock resistance	Operating extremes	20G
	Damage limits	100G
Life expectancy	Mechanical	10,000,000 operations (frequency 18,000 operations/hr)
	Electrical	100,000 operations (frequency 1,800 operations/hr)
Operating ambient temperature	-25~+70 °C (no freezing)	
Weight	Approx. 35 g	

Note : (1) initial value

»» Safety Approval

Certified	UL / CUL	CSA	TUV	FIMKO
File No.	E88991	LR90143	R3-09452079	12746

»» Safety Approval Rating

UL / CUL	CSA	TUV	FIMKO
10A 277VAC	10A 277VAC	10A 250VAC	10A 250VAC (DPDT)
15A 125VAC	10A 28VDC	10A 30VDC	15A 250VAC(DPNO)
10A 28VDC	1/2HP 7.5FLA 125VAC		
1/3HP 7.5FLA 125VAC	1/3HP 5.0FLA 240VAC		
1/2HP 5.0FLA 250VAC	15A 240VAC (DPNO ONLY)		
1/3HP 3.0FLA 277VAC			
15A 240VAC (DPNO ONLY)			

»» Outline Dimensions

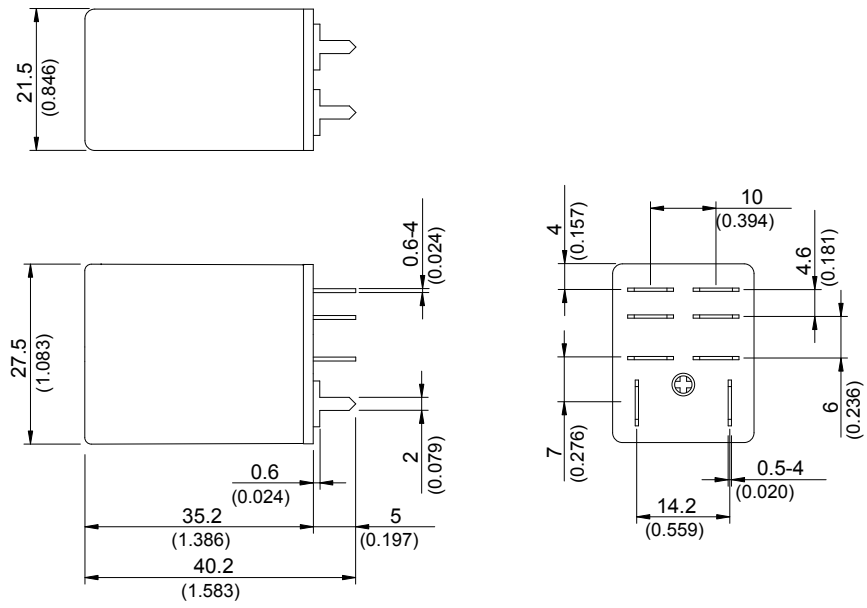
◆ SCL (C1)



◆ SCL

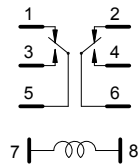


◆ SCL-1

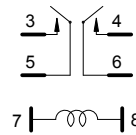


»» Wiring Diagram
BOTTOM VIEW

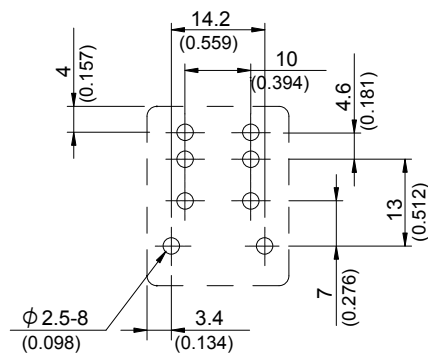
DPDT



DPNO

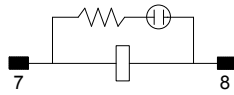


»» PC Board Layout
BOTTOM VIEW

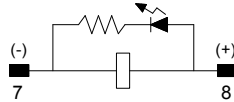


»» Designation(Provided with)
BOTTOM VIEW

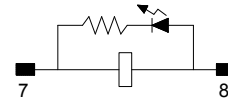
Lamp



(100~240VAC)

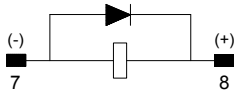


(6~48VDC)



(6~48VAC)

Diode



»» Engineering Data

