

LED DISPLAY

LTD-5250JG-18J

DATA SHEET

| Rev | Description | By |
|------------|--------------------------------------|------------|
| 01 | RDR Original Spec | Phanomkorn |
| 02 | Change face color from gray to black | Phanomkorn |
| - | NPPR Original Spec | Phanomkorn |
| | | |
| | | |
| | | |
| | | |
| | | |
| | | |

SPEC. NO.: DS30-2007-0211

D A T E : 28/Dec /'07

REV. NO. : -

LITEON LITE-ON TECHNOLOGY CORPORATION

Property of Lite-On Only

FEATURES

- * 0.52 inch (13.2 mm) DIGIT HEIGHT.
- * CONTINUOUS UNIFORM SEGMENTS.
- * LOW POWER REQUIREMENT.
- * EXCELLENT CHARACTERS APPEARANCE.
- * HIGH BRIGHTNESS & HIGH CONTRAST.
- * WIDE VIEWING ANGLE.
- * SOLID STATE RELIABILITY.
- * CATEGORIZED FOR LUMINOUS INTENSITY.
- * **LEAD-FREE PACKAGE (ACCORDING TO ROHS)**

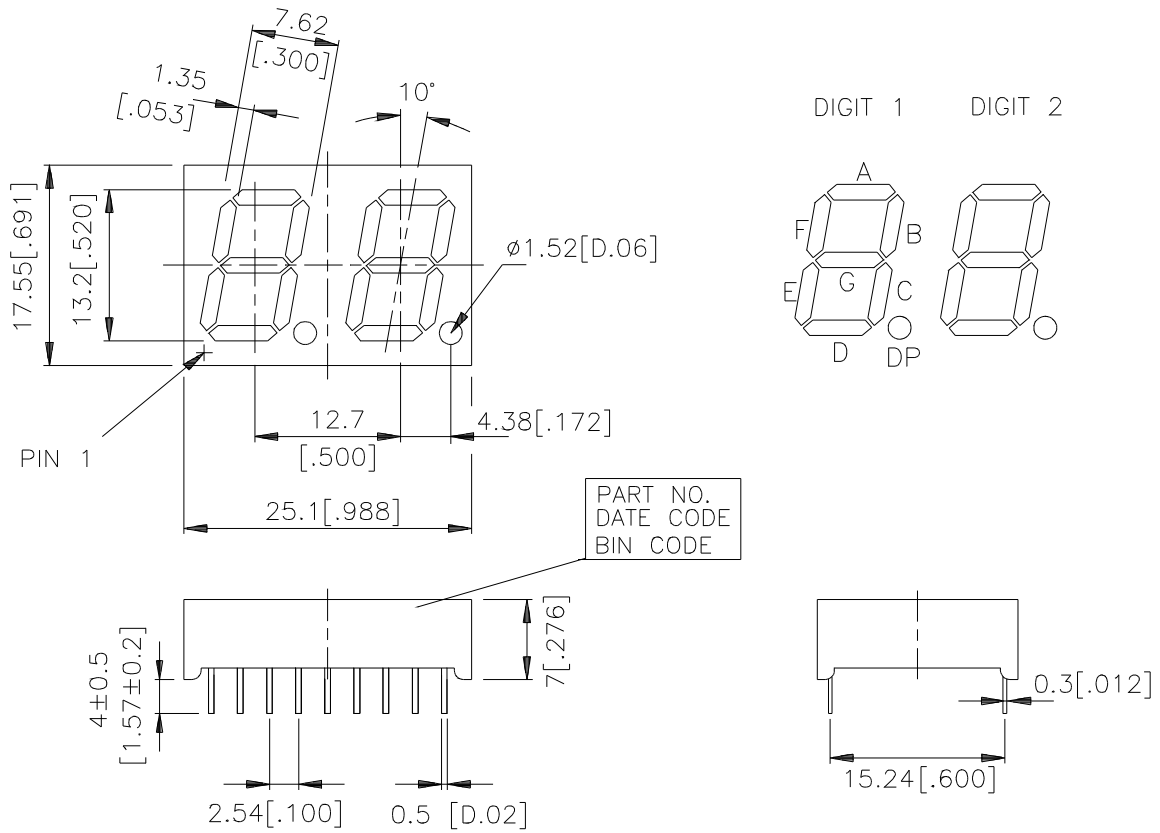
DESCRIPTION

The LTD-5250JG-18J is a 0.52 inch (13.2 mm) digit height dual digit seven-segment display. This device uses AlInGaP Green LED chips, which are made from AlInGaP on a non-transparent GaAs. The display has a black face and white segments.

DEVICE

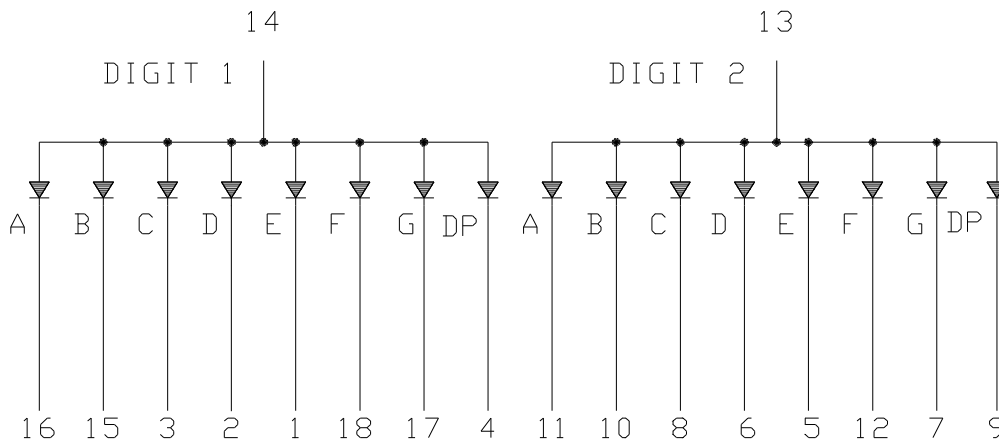
| PART NO. | DESCRIPTION |
|-----------------|--------------------|
| AlInGaP Green | Common Anode |
| LTD-5250JG-18J | Rt. Hand Decimal |

PACKAGE DIMENSIONS



- NOTES: 1. All dimensions are in millimeters. Tolerances are ± 0.25 mm unless otherwise note.
 2. Pin tip's shift tolerance is ± 0.4 mm.

INTERNAL CIRCUIT DIAGRAM



PIN CONNECTION

| No. | CONNECTION |
|------------|------------------------|
| 1 | CATHODE E (DIGIT 1) |
| 2 | CATHODE D (DIGIT 1) |
| 3 | CATHODE C (DIGIT 1) |
| 4 | CATHODE D.P. (DIGIT 1) |
| 5 | CATHODE E (DIGIT 2) |
| 6 | CATHODE D (DIGIT 2) |
| 7 | CATHODE G (DIGIT 2) |
| 8 | CATHODE C (DIGIT 2) |
| 9 | CATHODE D.P. (DIGIT 2) |
| 10 | CATHODE B (DIGIT 2) |
| 11 | CATHODE A (DIGIT 2) |
| 12 | CATHODE F (DIGIT 2) |
| 13 | COMMON ANODE (DIGIT 2) |
| 14 | COMMON ANODE (DIGIT 1) |
| 15 | CATHODE B (DIGIT 1) |
| 16 | CATHODE A (DIGIT 1) |
| 17 | CATHODE G (DIGIT 1) |
| 18 | CATHODE F (DIGIT 1) |

LITEON LITE-ON TECHNOLOGY CORPORATION

Property of Lite-On Only

ABSOLUTE MAXIMUM RATING AT Ta=25°C

| PARAMETER | MAXIMUM RATING | UNIT |
|---|-----------------|-------------|
| Power Dissipation Per Segment | 70 | mW |
| Peak Forward Current Per Segment (1/10 Duty Cycle, 0.1ms Pulse Width) | 60 | mA |
| Continuous Forward Current Per Segment Derating Linear From 25°C Per Segment | 25 0.33 | mA mA/°C |
| Reverse Voltage Per Segment | 5 | V |
| Operating Temperature Range | -35°C to +105°C | |
| Storage Temperature Range | -35°C to +105°C | |

Soldering Conditions: 1/16 inch below seating plane for 3 seconds at 260°C or
of temperature unit (during assembly) not over max. temperature rating above.

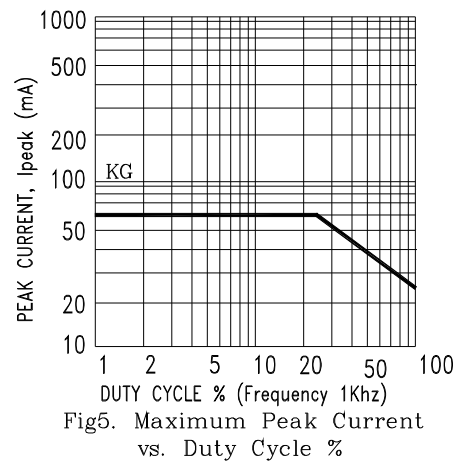
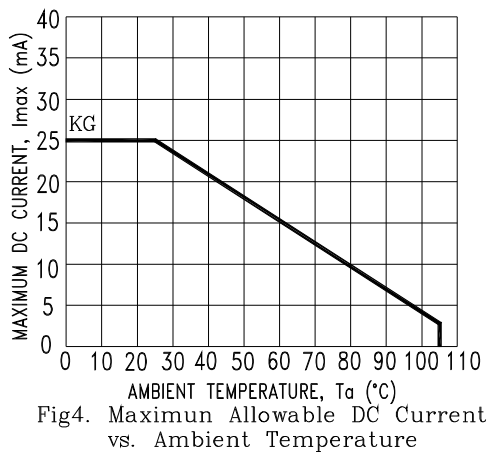
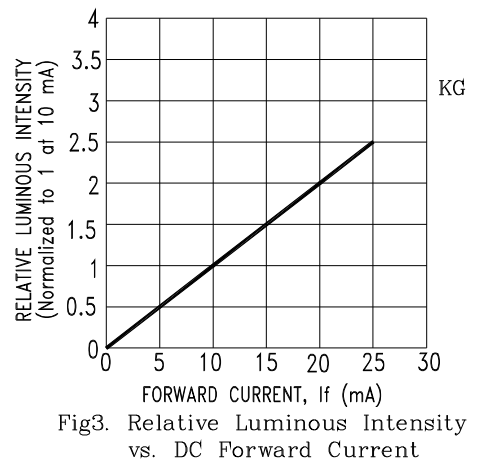
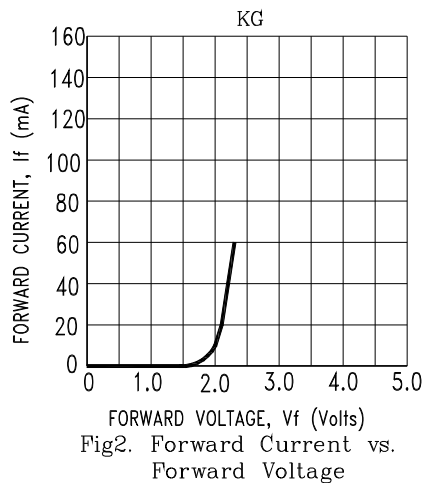
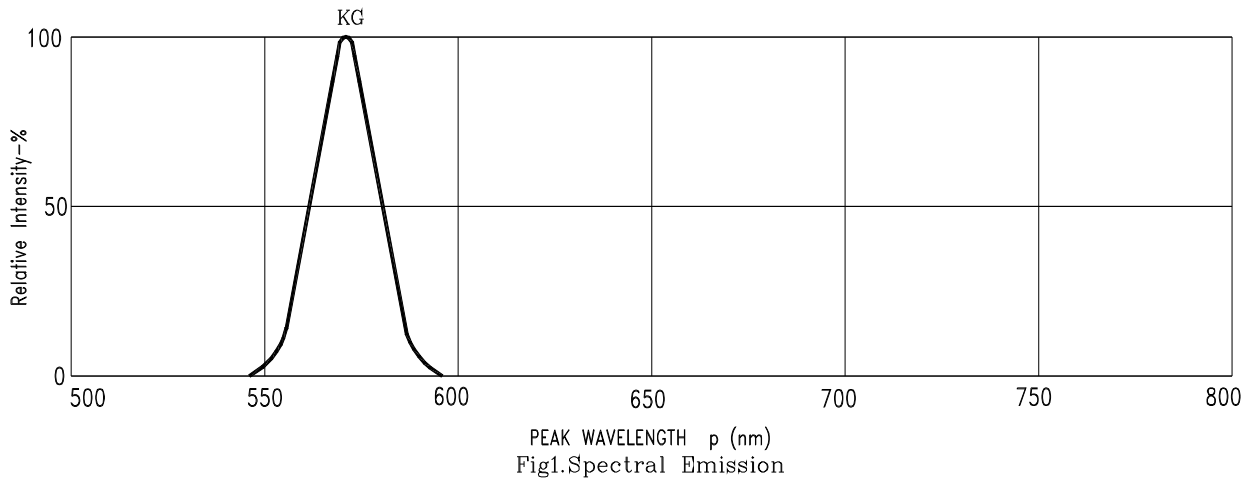
ELECTRICAL / OPTICAL CHARACTERISTICS AT Ta=25°C

| PARAMETER | SYMBOL | MIN. | TYP. | MAX. | UNIT | TEST CONDITION |
|---|------------------|------|------|------|------|----------------------|
| Average Luminous Intensity | I _v | 200 | 630 | | μcd | I _F =1mA |
| Peak Emission Wavelength | λ _p | | 571 | | nm | I _F =20mA |
| Spectral Line Half-Width | Δλ | | 15 | | nm | I _F =20mA |
| Dominant Wavelength | λ _d | | 572 | | nm | I _F =20mA |
| Forward Voltage Per Segment | V _F | | 2.05 | 2.6 | V | I _F =20mA |
| Reverse Current Per Segment | I _R | | | 100 | μA | V _R =5V |
| Luminous Intensity Matching Ratio (Similar Light Area) | I _{v-m} | | | 2:1 | | I _F =1mA |

Note: Luminous intensity is measured with a light sensor and filter combination that approximates the CIE (Commission Internationale De L'Eclairage) eye-response curve.

TYPICAL ELECTRICAL / OPTICAL CHARACTERISTIC CURVES

(25°C Ambient Temperature Unless Otherwise Noted)



NOTE : KG=AlInGaP Green

Mouser Electronics

Authorized Distributor

Click to View Pricing, Inventory, Delivery & Lifecycle Information:

[Lite-On:](#)

[PN-LTD-5250JG-18J](#)