

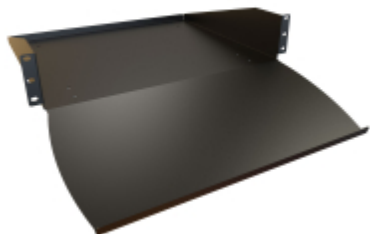


*Quality Products. Service Excellence.*

## Two Post Mounting Keyboard & Equipment Shelf *RKBM Series*

100 lbs|45 kg Weight Capacity

### Features



- Constructed of 14-gauge steel.
- Mounts to rack rails using 3.47" (2U) of vertical rack space.
- Rear lip to reduce chance of equipment being pushed off rear of shelf.
- The new ergonomic designed keyboard tray, supports a full-size keyboard.
- Finished in rugged textured black powder paint.
- Tested to nearly double the suggested load rating of 100 lbs (45 kg).
- TAA Compliant
- RoHS and REACH compliant.
- Manufactured in North America.

### Accessories



- Mounting Hardware



Part No.	Part No.	Overall Dimensions		Mounting Dimensions	
		Keyboard Depth	Rear Shelf Depth	Rack Units	Height
19 Inch Mounting RKBM19BK1	23 Inch Mounting RKBM23BK1	8.66	15.00	2U	3.47

*Data subject to change without notice*

© 2020. Hammond Manufacturing Ltd. All rights reserved.