

# Customer Information Sheet

DRAWING No.: M80-MCXXXMI-XX-XXXXL

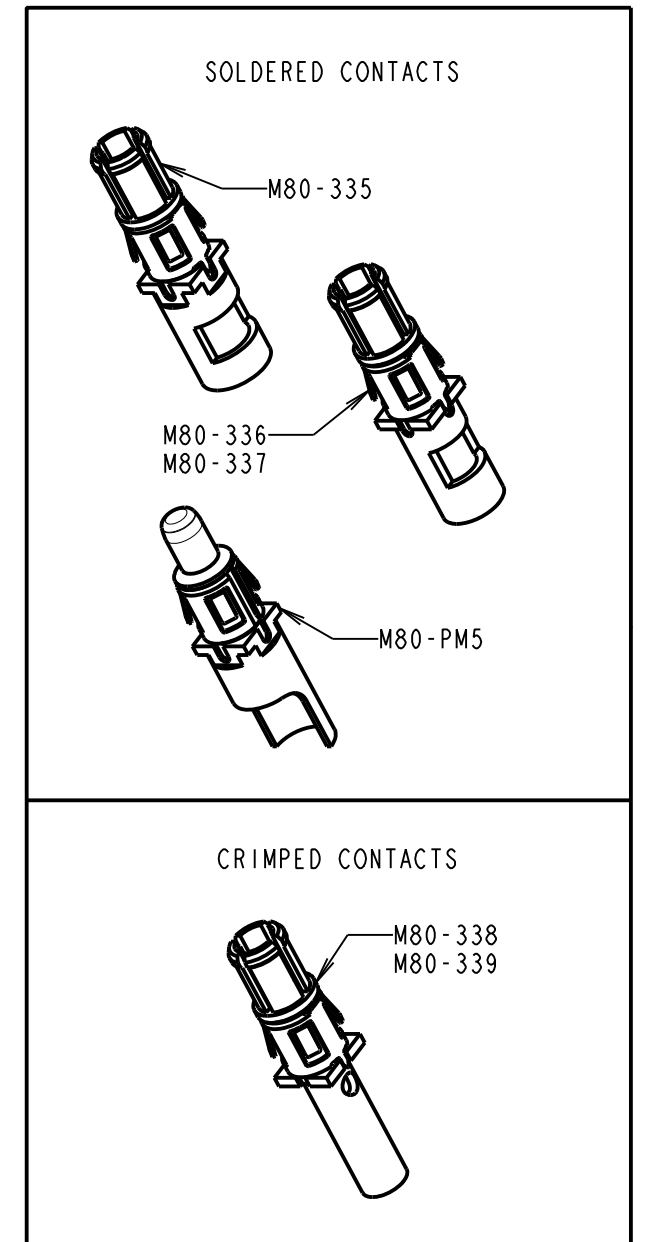
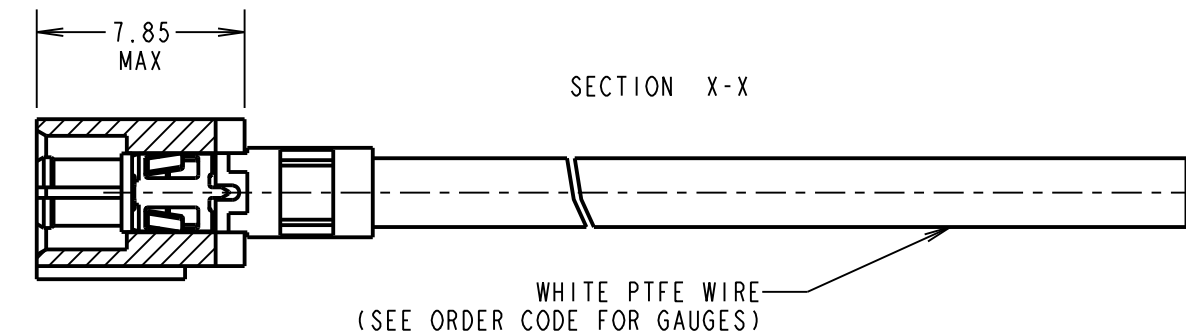
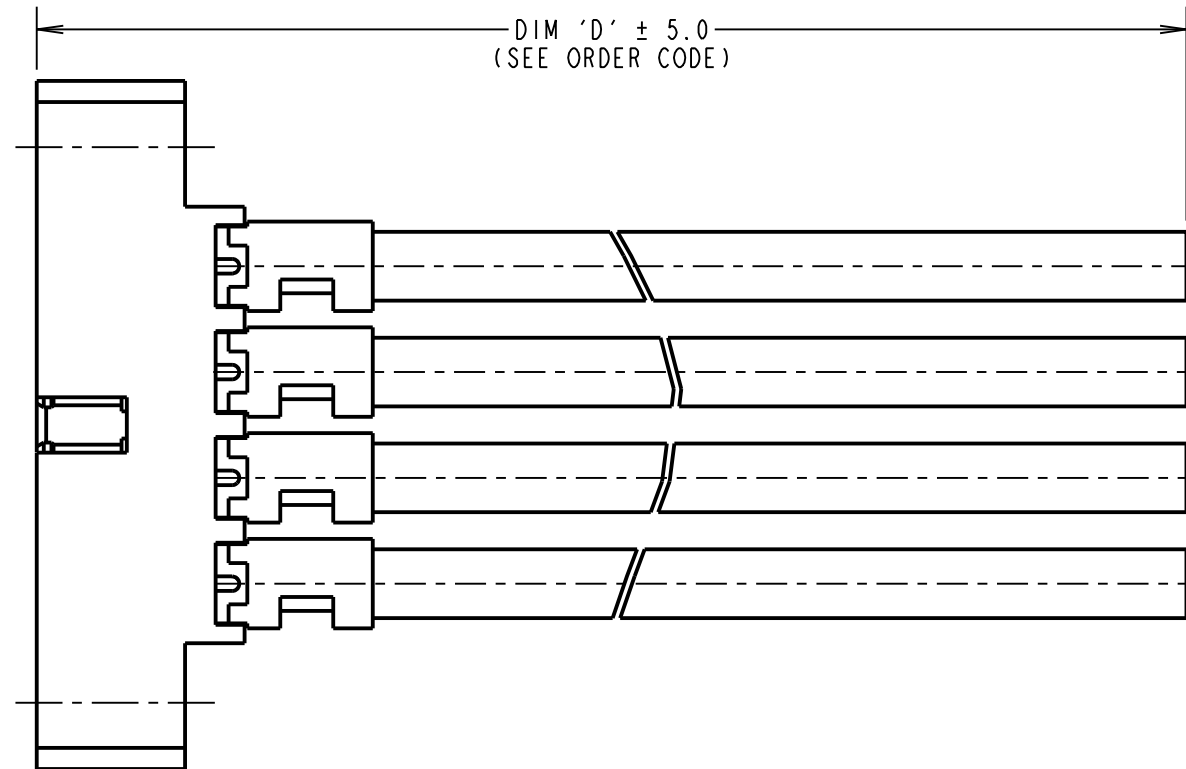
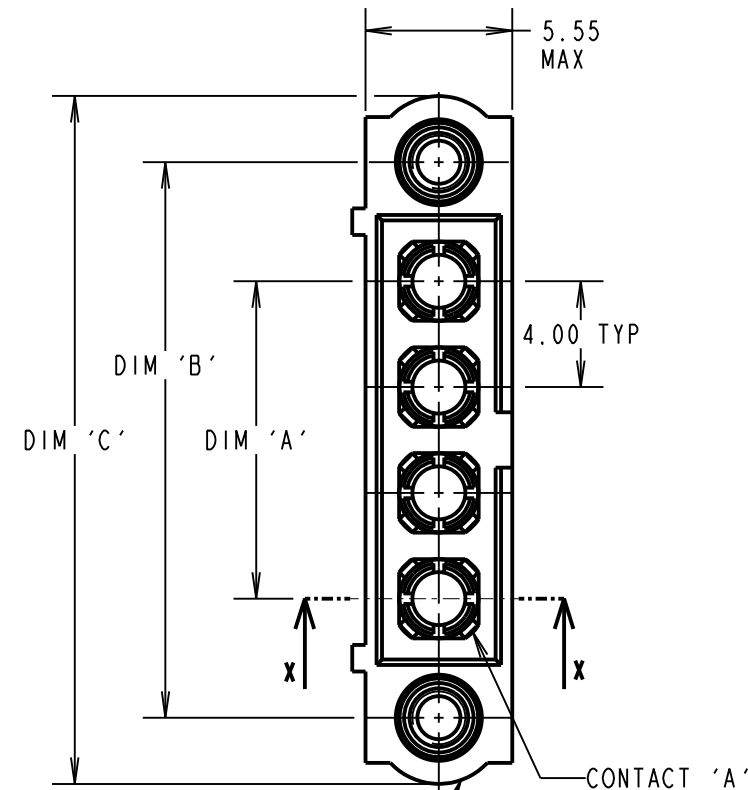
IF IN DOUBT - ASK

©

NOT TO SCALE

THIRD ANGLE PROJECTION

ALL DIMENSIONS IN mm



MALE MOULDING (1-OFF):  
SEE ORDER CODE FOR TOTAL  
No. OF CONTACTS

NOTES:  
1. CABLE ASSEMBLIES ARE PACKED IN BAGS OF 10.  
2. FOR COMPLETE SPECIFICATION SEE COMPONENT SPECIFICATION  
C005XX AND C049XX (LATEST ISSUES).

DIMENSION	MEASUREMENT
DIM 'A'	(4 x No. OF CONTACTS) - 4.00
DIM 'B'	(4 x No. OF CONTACTS) + 5.00
DIM 'C'	(4 x No. OF CONTACTS) +10.0

EXAMPLE PART No. :  
2 CONTACT CONNECTOR WITH 300mm OF 20AWG WIRE =  
M80-MC339MI-02-0300L  
10 CONTACT CONNECTOR WITH 150mm OF 10AWG WIRE =  
M80-MCPM5MI-10-0150L

## ORDER CODE: M80-MCXXXMI-XX-XXXXL

POWER CONTACT: \_\_\_\_\_  
335 = POWER CONTACT SOLDER 12AWG M80-335  
336 = POWER CONTACT SOLDER 14AWG M80-336  
337 = POWER CONTACT SOLDER 16AWG M80-337  
338 = POWER CONTACT CRIMP 18AWG M80-338  
339 = POWER CONTACT CRIMP 20AWG M80-339  
PM5 = POWER CONTACT SOLDER 10AWG M80-PM5

DIM 'D' LENGTH:  
0060 = 60mm MIN  
9999 = 9999mm MAX  
(SEE TABLE FOR EXAMPLES)

STOCKED CABLE LENGTHS:  
0150 = 150mm  
0300 = 300mm  
0450 = 450mm

TOTAL No. OF CONTACTS: \_\_\_\_\_  
02 TO 12

RTP	2	24.04.19	21886
NAME	ISS.	DATE	C/NOTE
APPROVED: R.PORTLOCK			
CHECKED: S.BENNETT			
DRAWN: F. MCGOWAN			
CUSTOMER REF.:			
ASSEMBLY DRG:			

# HARWIN

www.harwin.com  
technical@harwin.com

THIS DRAWING AND ANY  
INFORMATION OR DESCRIPTIVE  
MATTER SET OUT HEREON ARE  
CONFIDENTIAL AND COPYRIGHT  
PROPERTY OF THE HARWIN  
GROUP AND MUST NOT BE  
DISCLOSED, LOANED, COPIED  
OR USED FOR MANUFACTURING,  
TENDERING OR FOR ANY  
OTHER PURPOSE WITHOUT  
THEIR WRITTEN PERMISSION.

TOLERANCES  
X. = ±1mm  
X.X = ±0.50mm  
X.XX = ±0.20mm  
X.XXX = ±0.01mm  
ANGLES = ±5°  
UNLESS STATED

MATERIAL:  
SEE ABOVE  
FINISH: SEE ABOVE  
S/AREA: mm<sup>2</sup>

TITLE: DATAMATE POWER MALE  
SINGLE-ENDED CABLE ASSEMBLY  
WITH JACKSCREW

DRAWING NUMBER:  
**M80-MCXXXMI-XX-XXXXL**

SHT  
2  
OF  
2