

APL3015SYCK SUPER BRIGHT YELLOW

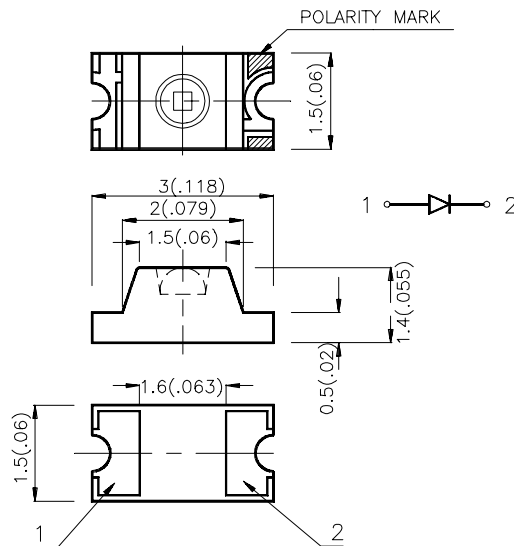
### Features

- 3.0mmx1.5mm SMT LED, 1.4mm THICKNESS.
- LOW POWER CONSUMPTION.
- WIDE VIEWING ANGLE.
- IDEAL FOR BACKLIGHT AND INDICATOR.
- VARIOUS COLORS AND LENS TYPES AVAILABLE.
- INNER LENS TYPE.
- PACKAGE : 2000PCS / REEL.

### Description

The Super Bright Yellow source color devices are made with DH InGaAlP on GaAs substrate Light Emitting Diode.

### Package Dimensions



#### Notes:

1. All dimensions are in millimeters (inches).
2. Tolerance is  $\pm 0.2(0.0079)$  unless otherwise noted.
3. Lead spacing is measured where the lead emerge package.
4. Specifications are subject to change without notice.

## Selection Guide

| Part No.    | Dice                            | Lens Type   | Iv (mcd)<br>@ 20 mA |      | Viewing<br>Angle |
|-------------|---------------------------------|-------------|---------------------|------|------------------|
|             |                                 |             | Min.                | Typ. | 2θ1/2            |
| APL3015SYCK | SUPER BRIGHT YELLOW ( InGaAlP ) | WATER CLEAR | 40                  | 100  | 70°              |

Note:

1. θ1/2 is the angle from optical centerline where the luminous intensity is 1/2 the optical centerline value.

## Electrical / Optical Characteristics at T<sub>A</sub>=25°C

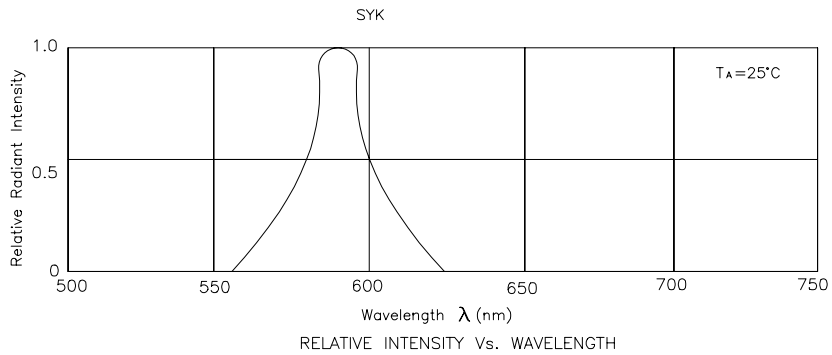
| Symbol            | Parameter               | Device              | Typ. | Max. | Units | Test Conditions |
|-------------------|-------------------------|---------------------|------|------|-------|-----------------|
| λ <sub>peak</sub> | Peak Wavelength         | Super Bright Yellow | 590  |      | nm    | IF=20mA         |
| λ <sub>D</sub>    | Dominate Wavelength     | Super Bright Yellow | 590  |      | nm    | IF=20mA         |
| Δλ <sub>1/2</sub> | Spectral Line Halfwidth | Super Bright Yellow | 20   |      | nm    | IF=20mA         |
| C                 | Capacitance             | Super Bright Yellow | 20   |      | pF    | VF=0V;f=1MHz    |
| V <sub>F</sub>    | Forward Voltage         | Super Bright Yellow | 2.0  | 2.5  | V     | IF=20mA         |
| I <sub>R</sub>    | Reverse Current         | Super Bright Yellow |      | 10   | uA    | VR = 5V         |

## Absolute Maximum Ratings at T<sub>A</sub>=25°C

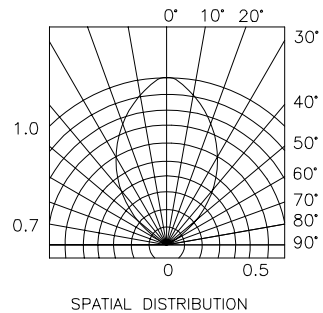
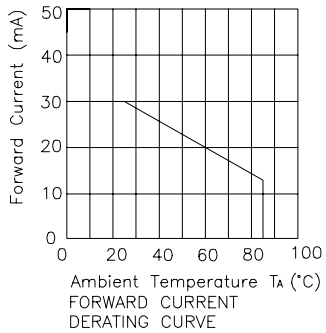
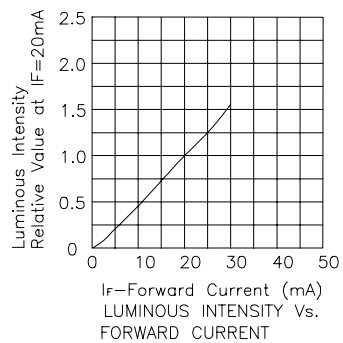
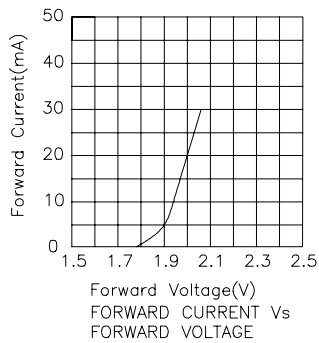
| Parameter                | Super Bright Yellow | Units |
|--------------------------|---------------------|-------|
| Power dissipation        | 125                 | mW    |
| DC Forward Current       | 30                  | mA    |
| Peak Forward Current [1] | 175                 | mA    |
| Reverse Voltage          | 5                   | V     |
| Operating Temperature    | -40°C To +85°C      |       |
| Storage Temperature      | -40°C To +85°C      |       |

Note:

1. 1/10 Duty Cycle, 0.1ms Pulse Width.

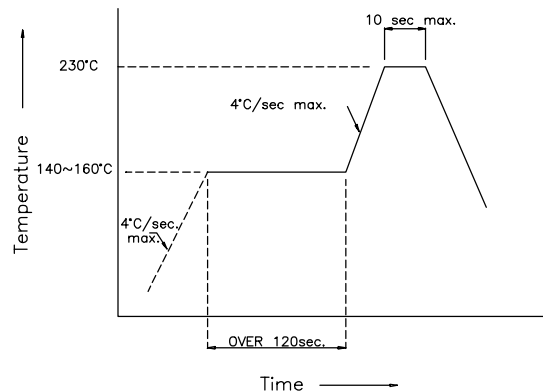


## Super Bright Yellow APL3015SYCK

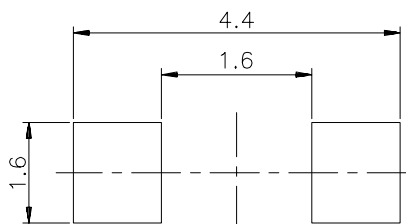


## APL3015SYCK SMT Reflow Soldering Instructions

Number of reflow process shall be less than 2 times and cooling process to normal temperature is required between first and second soldering process.



## Recommended Soldering Pattern (Units : mm)



## Tape Specifications (Units : mm)

