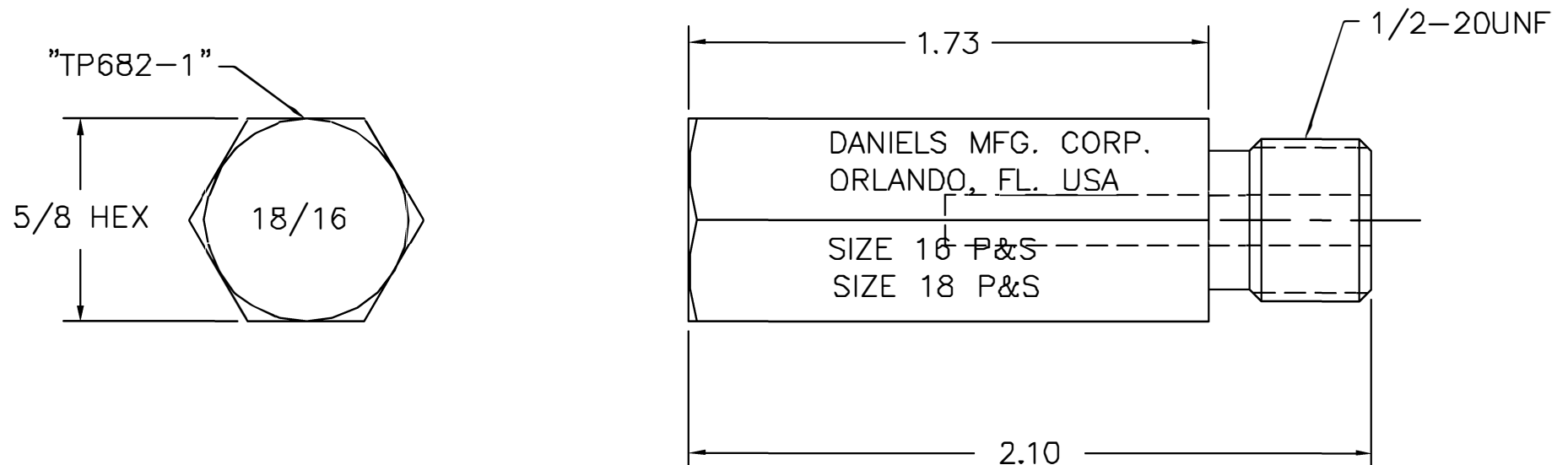


REVISIONS				
REV. SYM.	E.C.O. NUMBER	DESCRIPTION	BY DATE	APP'D DATE
1		ORIGINAL RELEASE	JWJ 6/9/05	RRR 6/9/05

**UNCONTROLLED DOCUMENT
WILL NOT BE UPDATED**



LOCATOR	
HOLE DIMENSIONS	ADDITIONAL FEATURES
$\phi .156$ $\nabla 1.312$	

RESTRICTED & CONFIDENTIAL

CONFIDENTIAL PROPERTY OF DANIELS MANUFACTURING CORP. NOT TO BE DISCLOSED TO OTHERS, REPRODUCED OR USED FOR ANY OTHER PURPOSE, EXCEPT AS AUTHORIZED IN WRITING BY DANIELS MANUFACTURING. MUST BE RETURNED TO DANIELS MANUFACTURING CORP. ON COMPLETION OF ORDER OR OTHER PURPOSE FOR WHICH LENT.

DO NOT SCALE DRAWING

DRN.	J. JOYCE	DATE 6/9/05
CHK'D.	RRR	DATE 6/9/05
APP'D.		DATE
APP'D.		DATE
NOTE: THIS DRAWING IS AN OUTLINE DRAWING OF THE RESPECTIVE DMC PART NUMBER INDICATED. ACTUAL DMC PART NUMBER IS DRAWING NUMBER WITHOUT THE "-ENV" SUFFIX.		



DANIELS MANUFACTURING CORP.
ORLANDO, FLORIDA
CAGE 11851

TITLE SINGLE POSITION HEAD ENVELOPE DRAWING			
WHERE USED: M300-25A			
SIZE A	SCALE NTS	CAD P/N TP682-1-ENV	SHEET 1 OF 1
POSTING	DWG. NO. TP682-1-ENV		REV. 1