

## FLORENTINA-2X2-MRK-M

~40° medium beam. Compatible with ultra high power LEDs.

### TECHNICAL SPECIFICATIONS:

Dimensions	89.7 mm
Height	17.7 mm
Fastening	pin, screw
ROHS compliant	yes ⓘ

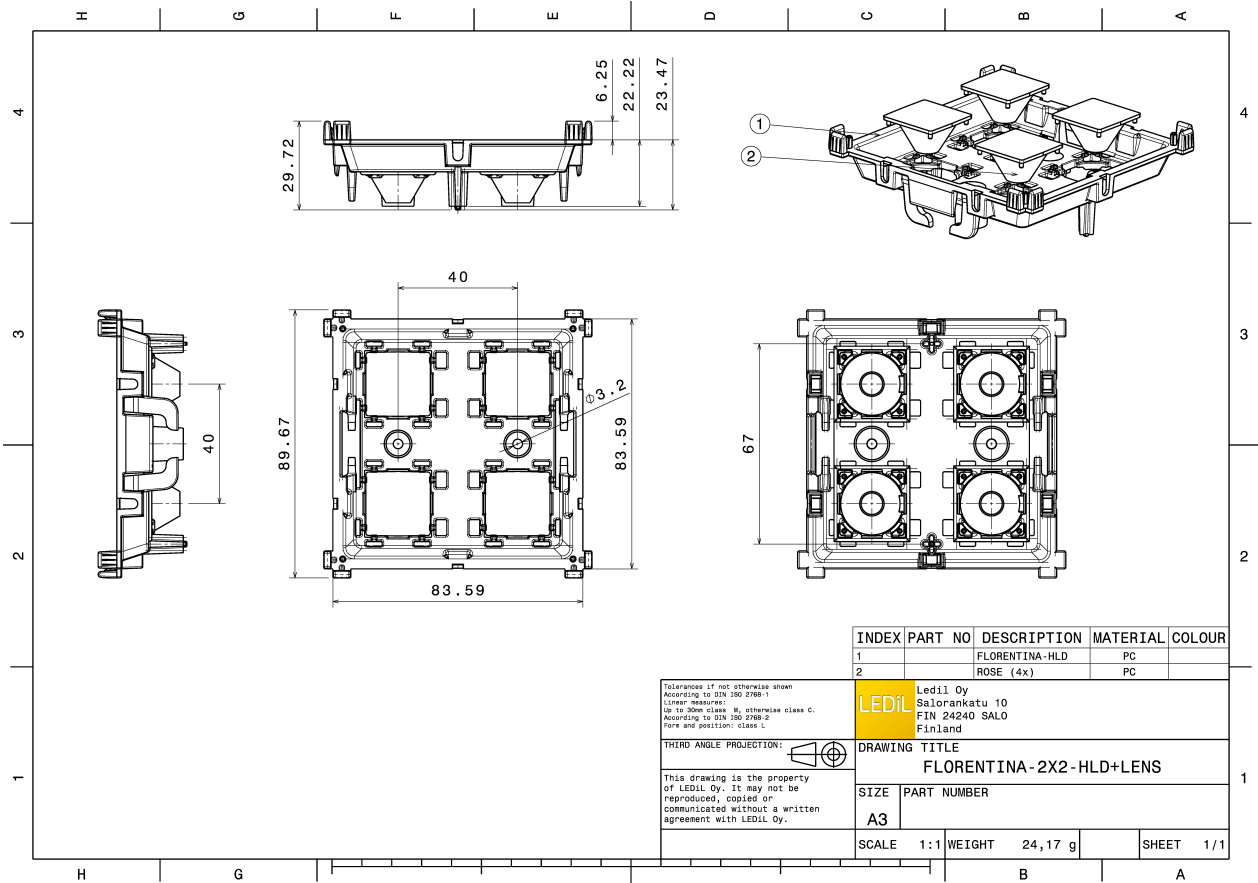
### MATERIAL SPECIFICATIONS:

Component	Type	Material	Colour	Finish
ROSE-MRK-M	Single lens	PC	clear	
FLORENTINA-2X2-HLD	Holder	PC	black	

### ORDERING INFORMATION:

Component		Qty in box	MOQ	MPQ	Box weight (kg)
FCP15705_FLORENTINA-2X2-MRK-M	Single lens	88	24	8	4.2
» Box size: 476 x 273 x 292 mm					

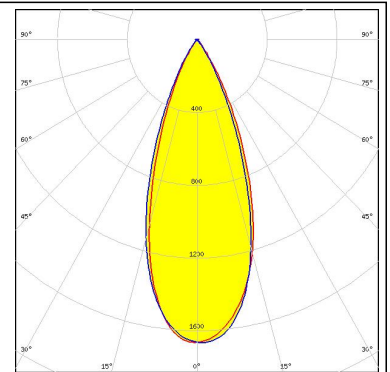




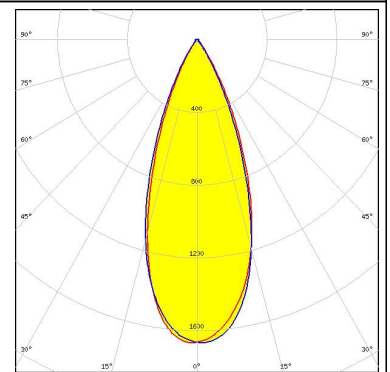
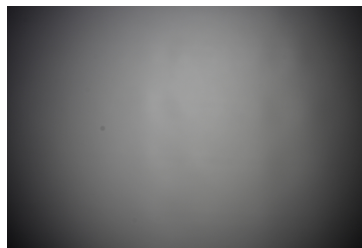
#### PHOTOMETRIC DATA (MEASURED):



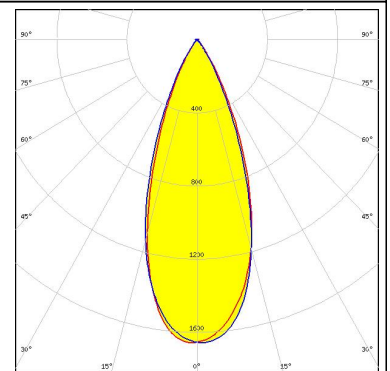
LED XHP35 HD  
 FWHM 39.0°  
 Efficiency 79 %  
 Peak intensity 1.7 cd/lm  
 LEDs/each optic 1  
 Light colour White  
 Required components:  
 C14734\_FLORENTINA-2X2-SHD



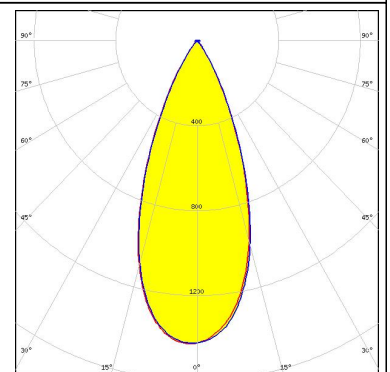
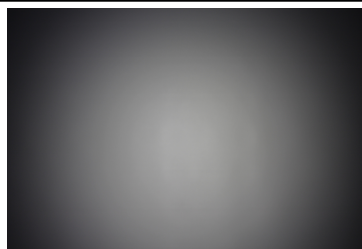
LED XHP35 HD  
 FWHM 39.0°  
 Efficiency 82 %  
 Peak intensity 1.7 cd/lm  
 LEDs/each optic 1  
 Light colour White  
 Required components:  
 C14960\_FLORENTINA-2X2-SHD-WHT



LED XHP35 HD  
 FWHM 39.0°  
 Efficiency 79 %  
 Peak intensity 1.7 cd/lm  
 LEDs/each optic 1  
 Light colour White  
 Required components:  
 C15196\_FLORENTINA-2X2-SHD-OPEN



LED XHP50  
 FWHM 41.0°  
 Efficiency 76 %  
 Peak intensity 1.4 cd/lm  
 LEDs/each optic 1  
 Light colour White  
 Required components:  
 C14734\_FLORENTINA-2X2-SHD

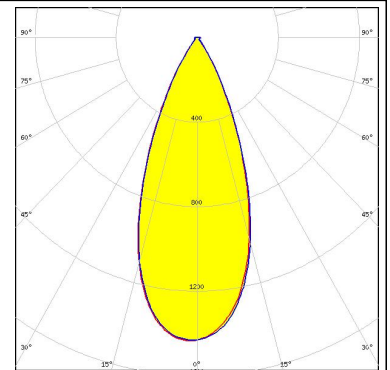


#### PHOTOMETRIC DATA (MEASURED):

**CREE** 

LED XHP50  
FWHM 41.0°  
Efficiency 80 %  
Peak intensity 1.4 cd/lm  
LEDs/each optic 1  
Light colour White

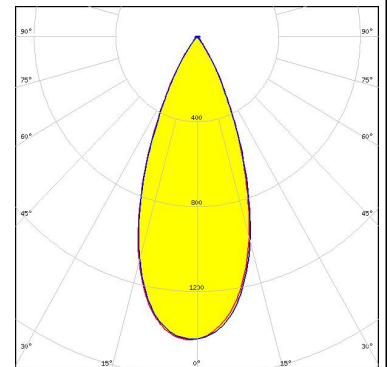
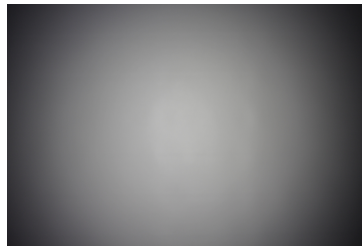
Required components:  
C14960\_FLORENTINA-2X2-SHD-WHT



**CREE** 

LED XHP50  
FWHM 41.0°  
Efficiency 76 %  
Peak intensity 1.4 cd/lm  
LEDs/each optic 1  
Light colour White

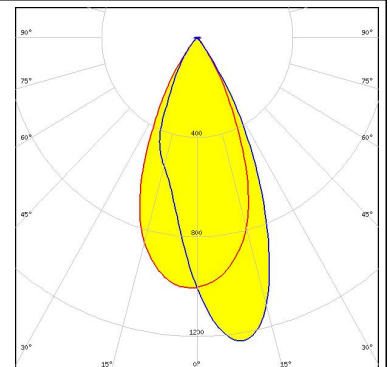
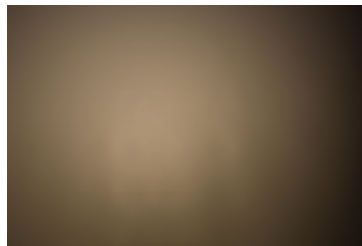
Required components:  
C15196\_FLORENTINA-2X2-SHD-OPEN



**CREE** 

LED XHP70  
FWHM 48.0°  
Efficiency 69 %  
Peak intensity 1.2 cd/lm  
LEDs/each optic 1  
Light colour White

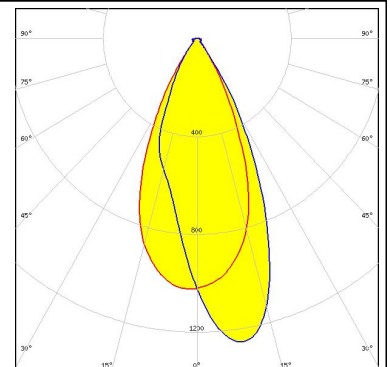
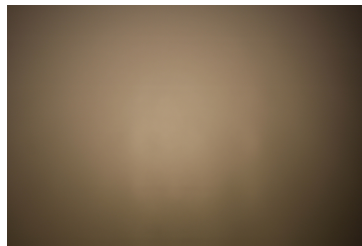
Required components:  
C14734\_FLORENTINA-2X2-SHD



**CREE** 

LED XHP70  
FWHM 48.0°  
Efficiency 77 %  
Peak intensity 1.3 cd/lm  
LEDs/each optic 1  
Light colour White

Required components:  
C14960\_FLORENTINA-2X2-SHD-WHT

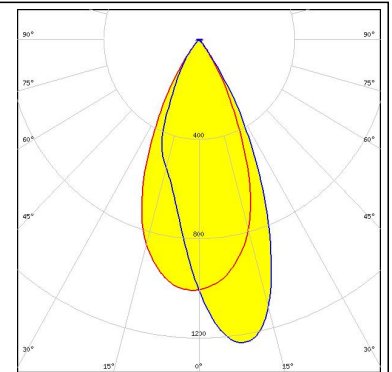
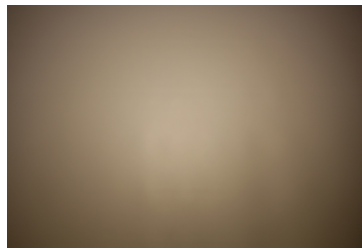




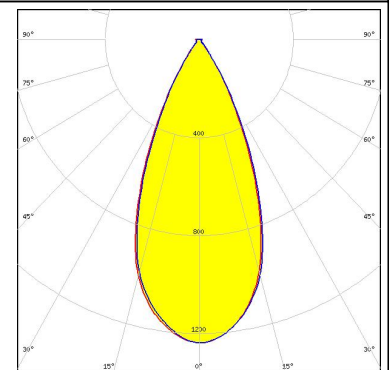
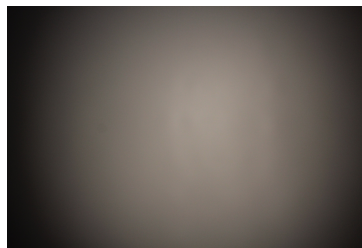
#### PHOTOMETRIC DATA (MEASURED):



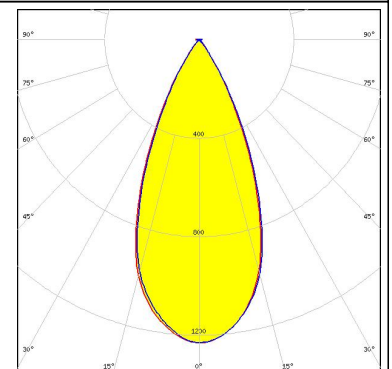
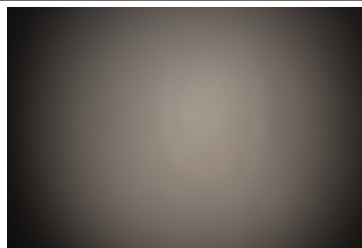
**LED** XHP70  
**FWHM** 48.0°  
**Efficiency** 70 %  
**Peak intensity** 1.2 cd/lm  
**LEDs/each optic** 1  
**Light colour** White  
**Required components:**  
 C15196\_FLORENTINA-2X2-SHD-OPEN



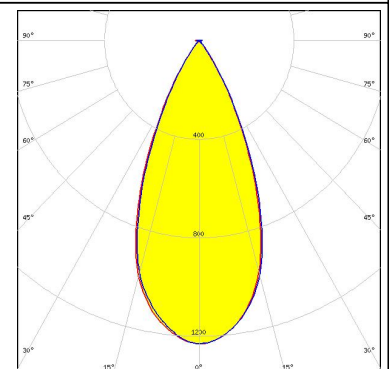
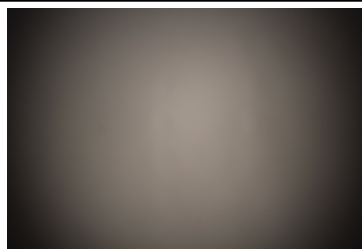
**LED** H70E0  
**FWHM** 46.0°  
**Efficiency** 80 %  
**Peak intensity** 1.2 cd/lm  
**LEDs/each optic** 1  
**Light colour** White  
**Required components:**  
 C14960\_FLORENTINA-2X2-SHD-WHT



**LED** H70E0  
**FWHM** 45.0°  
**Efficiency** 76 %  
**Peak intensity** 1.2 cd/lm  
**LEDs/each optic** 1  
**Light colour** White  
**Required components:**  
 C15196\_FLORENTINA-2X2-SHD-OPEN



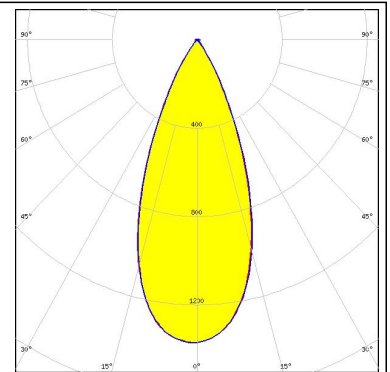
**LED** H70E0  
**FWHM** 45.0°  
**Efficiency** 75 %  
**Peak intensity** 1.2 cd/lm  
**LEDs/each optic** 1  
**Light colour** White  
**Required components:**  
 C14734\_FLORENTINA-2X2-SHD



#### PHOTOMETRIC DATA (MEASURED):

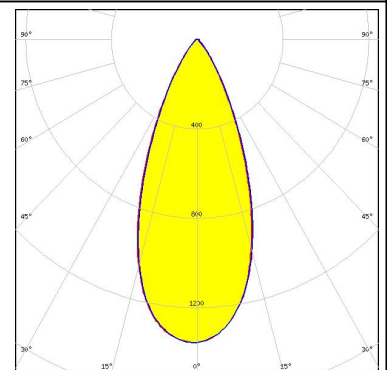
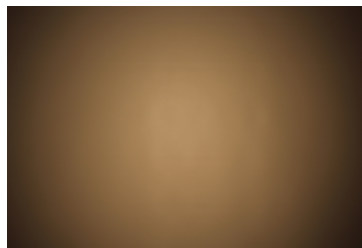
#### LUMILEDS

LED LUXEON M/MX  
 FWHM 42.0°  
 Efficiency 74 %  
 Peak intensity 1.4 cd/lm  
 LEDs/each optic 1  
 Light colour White  
 Required components:  
 C14734\_FLORENTINA-2X2-SHD



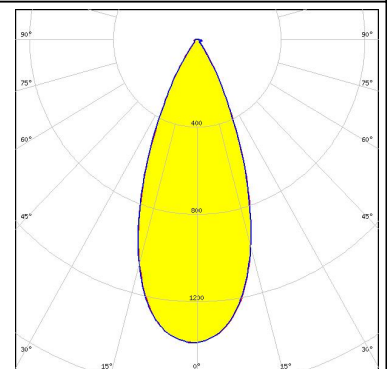
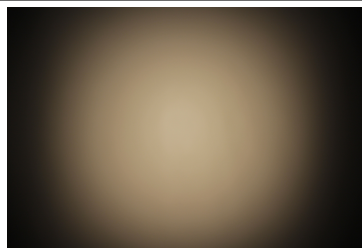
#### LUMILEDS

LED LUXEON M/MX  
 FWHM 43.0°  
 Efficiency 82 %  
 Peak intensity 1.4 cd/lm  
 LEDs/each optic 1  
 Light colour White  
 Required components:



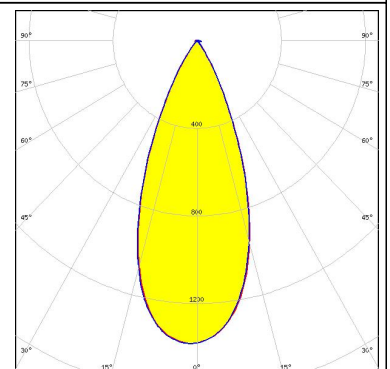
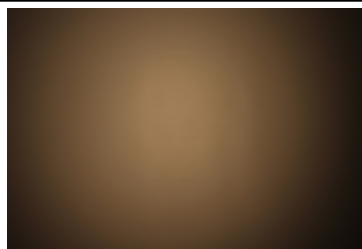
#### LUMILEDS

LED LUXEON M/MX  
 FWHM 42.0°  
 Efficiency 79 %  
 Peak intensity 1.4 cd/lm  
 LEDs/each optic 1  
 Light colour White  
 Required components:  
 C14960\_FLORENTINA-2X2-SHD-WHT



#### LUMILEDS

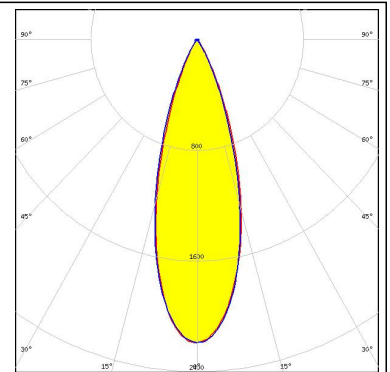
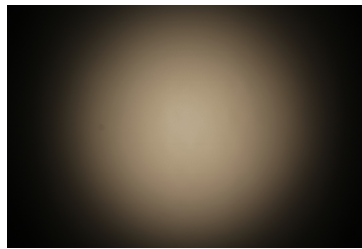
LED LUXEON M/MX  
 FWHM 41.0°  
 Efficiency 74 %  
 Peak intensity 1.4 cd/lm  
 LEDs/each optic 1  
 Light colour White  
 Required components:  
 C15196\_FLORENTINA-2X2-SHD-OPEN



#### PHOTOMETRIC DATA (MEASURED):

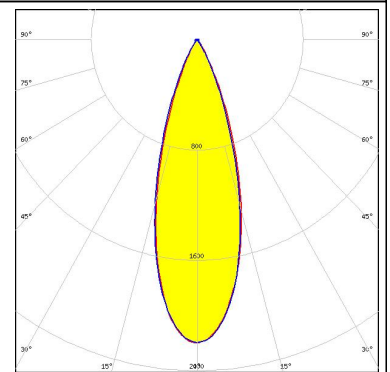
#### LUMILEDS

LED LUXEON MZ  
 FWHM 33.0°  
 Efficiency 77 %  
 Peak intensity 2.2 cd/lm  
 LEDs/each optic 1  
 Light colour White  
 Required components:  
 C15196\_FLORENTINA-2X2-SHD-OPEN



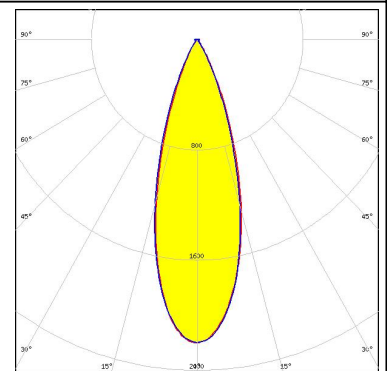
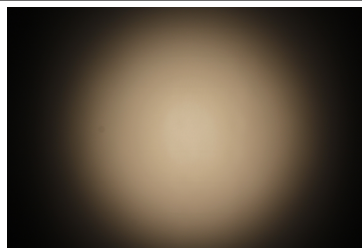
#### LUMILEDS

LED LUXEON MZ  
 FWHM 33.0°  
 Efficiency 78 %  
 Peak intensity 2.2 cd/lm  
 LEDs/each optic 1  
 Light colour White  
 Required components:  
 C14734\_FLORENTINA-2X2-SHD



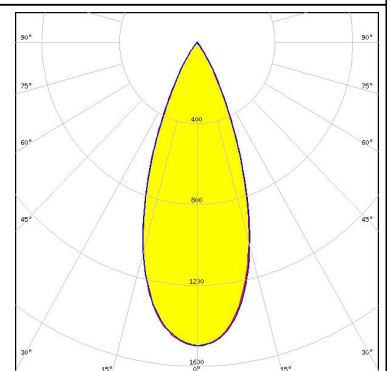
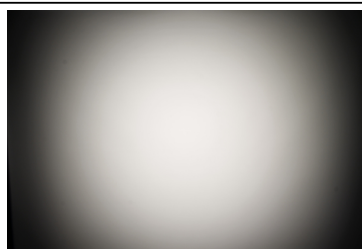
#### LUMILEDS

LED LUXEON MZ  
 FWHM 33.0°  
 Efficiency 81 %  
 Peak intensity 2.2 cd/lm  
 LEDs/each optic 1  
 Light colour White  
 Required components:  
 C14960\_FLORENTINA-2X2-SHD-WHT



#### OSRAM Opto Semiconductors

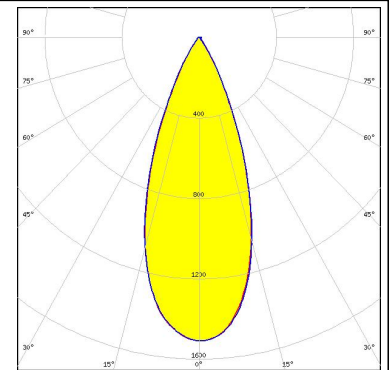
LED OSCONIQ P 7070  
 FWHM 40.0°  
 Efficiency 70 %  
 Peak intensity 1.5 cd/lm  
 LEDs/each optic 1  
 Light colour White  
 Required components:  
 C14734\_FLORENTINA-2X2-SHD



#### PHOTOMETRIC DATA (MEASURED):

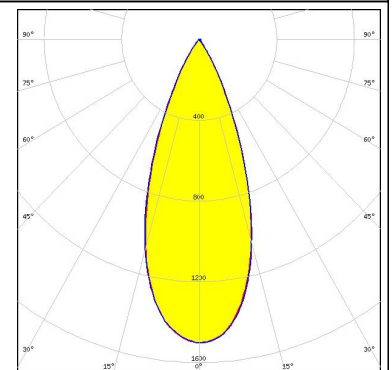
##### OSRAM Opto Semiconductors

LED OSCONIQ P 7070  
FWHM 40.0°  
Efficiency 75 %  
Peak intensity 1.5 cd/lm  
LEDs/each optic 1  
Light colour White  
Required components:  
C14960\_FLORENTINA-2X2-SHD-WHT



##### OSRAM Opto Semiconductors

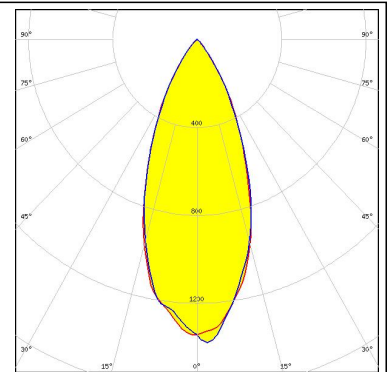
LED OSCONIQ P 7070  
FWHM 40.0°  
Efficiency 71 %  
Peak intensity 1.5 cd/lm  
LEDs/each optic 1  
Light colour White  
Required components:  
C15196\_FLORENTINA-2X2-SHD-OPEN



#### PHOTOMETRIC DATA (SIMULATED):

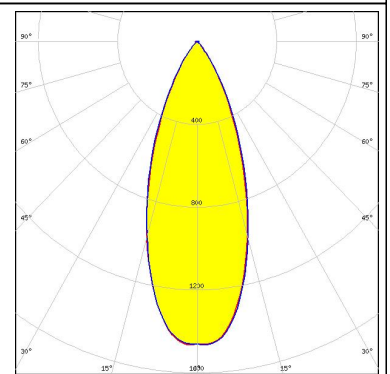


LED NV4x144A  
FWHM 42.0°  
Efficiency 76 %  
Peak intensity 1.4 cd/lm  
LEDs/each optic 1  
Light colour White  
Required components:  
C14734\_FLORENTINA-2X2-SHD



Opto Semiconductors

LED Duris S8  
FWHM 39.0°  
Efficiency 76 %  
Peak intensity 1.5 cd/lm  
LEDs/each optic 1  
Light colour White  
Required components:  
C14734\_FLORENTINA-2X2-SHD





#### GENERAL INFORMATION:

NOTE: The typical beam angle will be changed by different color, chip size and chip position tolerance. The typical total beam angle is the full angle measured where the luminous intensity is half of the peak value.

#### MATERIALS:

As part of our continuous research and improvement processes, and to ensure the best possible quality and availability of our products, LEDiL reserves the right to change material grades without notice.

#### PRODUCT DATA USER AGREEMENT AND DISCLAIMER:

The measured data in the provided downloadable LEDiL Product Datasheets and Mechanical 2D-Drawings is rounded and provided as reference for planning. LEDiL Oy's optical specifications have been verified by conducting performance testing of the products in accordance with the company's quality system. The reported data are averaged results of multiple measurements with typical variation. LEDiL Oy reserves the right to without prior notification make changes and improvements to its products.

LEDiL Oy assumes neither warranty, nor guarantee nor any other liability of any kind for the contents and correctness of the provided data. The provided data has been generated with highest diligence but the provided data may in reality not represent the complete possible variation range of all intrinsic parameters. Therefore, in certain cases a deviation from the provided data could occur.

LEDiL Oy reserves the right to undertake technical changes of its products without further notification which could lead to changes in the provided data. LEDiL Oy assumes no liability of any kind for the possible deviation from any provided data or any other damage resulting from the usage of the provided data.

The user agrees to this disclaimer and user agreement with the download or usage of the provided files.

#### LEDiL Oy

Joensuunkatu 13  
FI-24240 SALO  
Finland

#### LEDiL Inc.

228 West Page Street  
Suite D  
Sycamore IL 60178  
USA

#### Local sales and technical support

[www.ledil.com/  
where\\_to\\_buy](http://www.ledil.com/where_to_buy)

#### Shipping locations

Salo, Finland  
Hong Kong, China

#### Distribution Partners

[www.ledil.com/  
where\\_to\\_buy](http://www.ledil.com/where_to_buy)