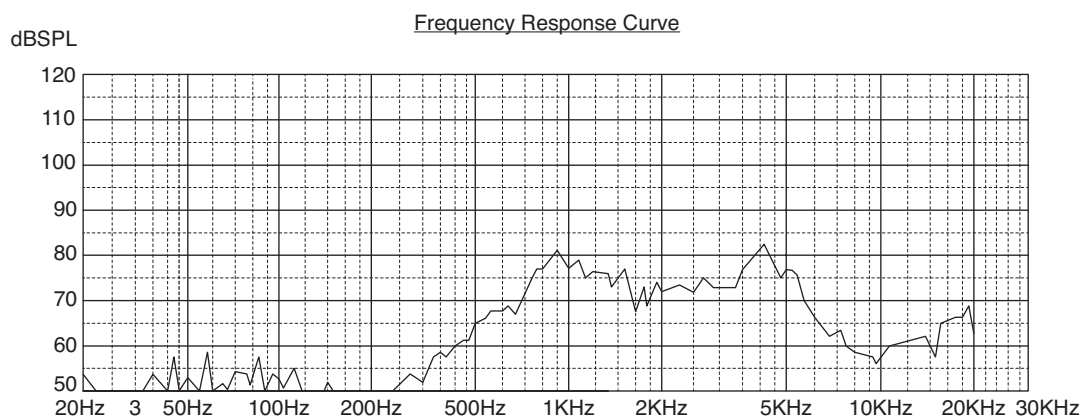
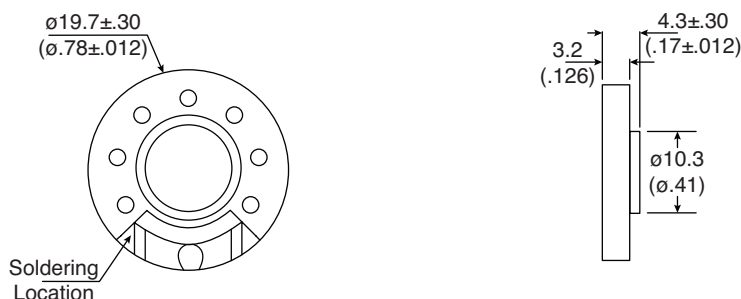


Part Number:

254-PS2008-RO

**Speaker**

KT-400562

Electrical Specifications:

- Nominal Impedance: $8\Omega \pm 15\%$ at 1800Hz/1.0V
- Power Rating: Normal 0.1W, Maximum 0.2W
- Lowest Resonant Frequency: $900 \pm 150\text{Hz}$
- Output Sound Pressure Level: $75 \pm 3\text{dB}/0.1\text{Watt } 0.5\text{Meter}$
Average at 1000, 1200, 1500, 2000Hz
- Frequency Range: 700~7500Hz, Average SPL -10dB

Mechanical Specifications:

- Operating Temperature: -20°C to $+50^{\circ}\text{C}$
- Storage Temperature: -25°C to $+55^{\circ}\text{C}$

Materials:

- Magnet: NdFeB
- Weight: Approx 1.5 Grams

Notes:

- RoHS Compliant