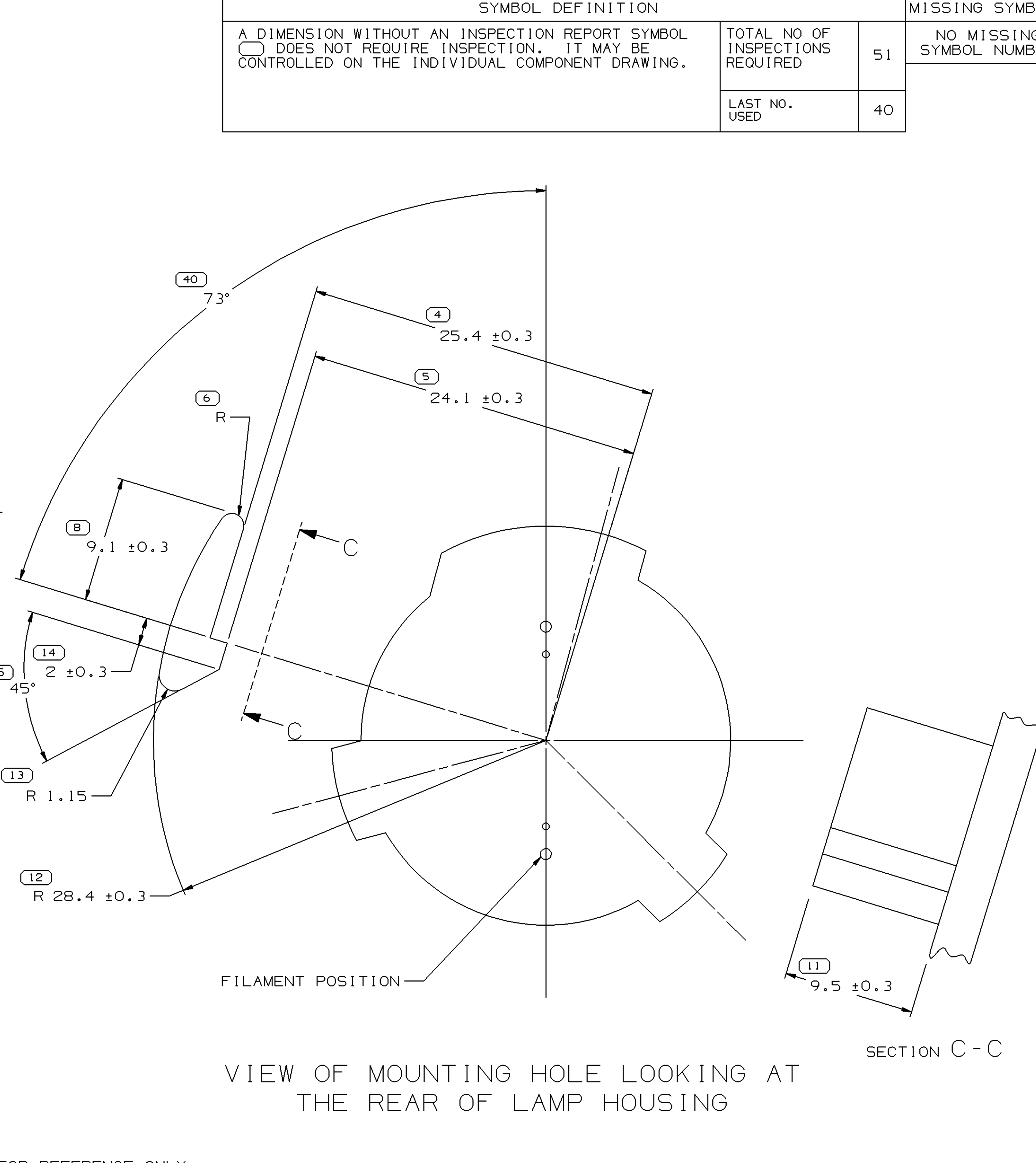
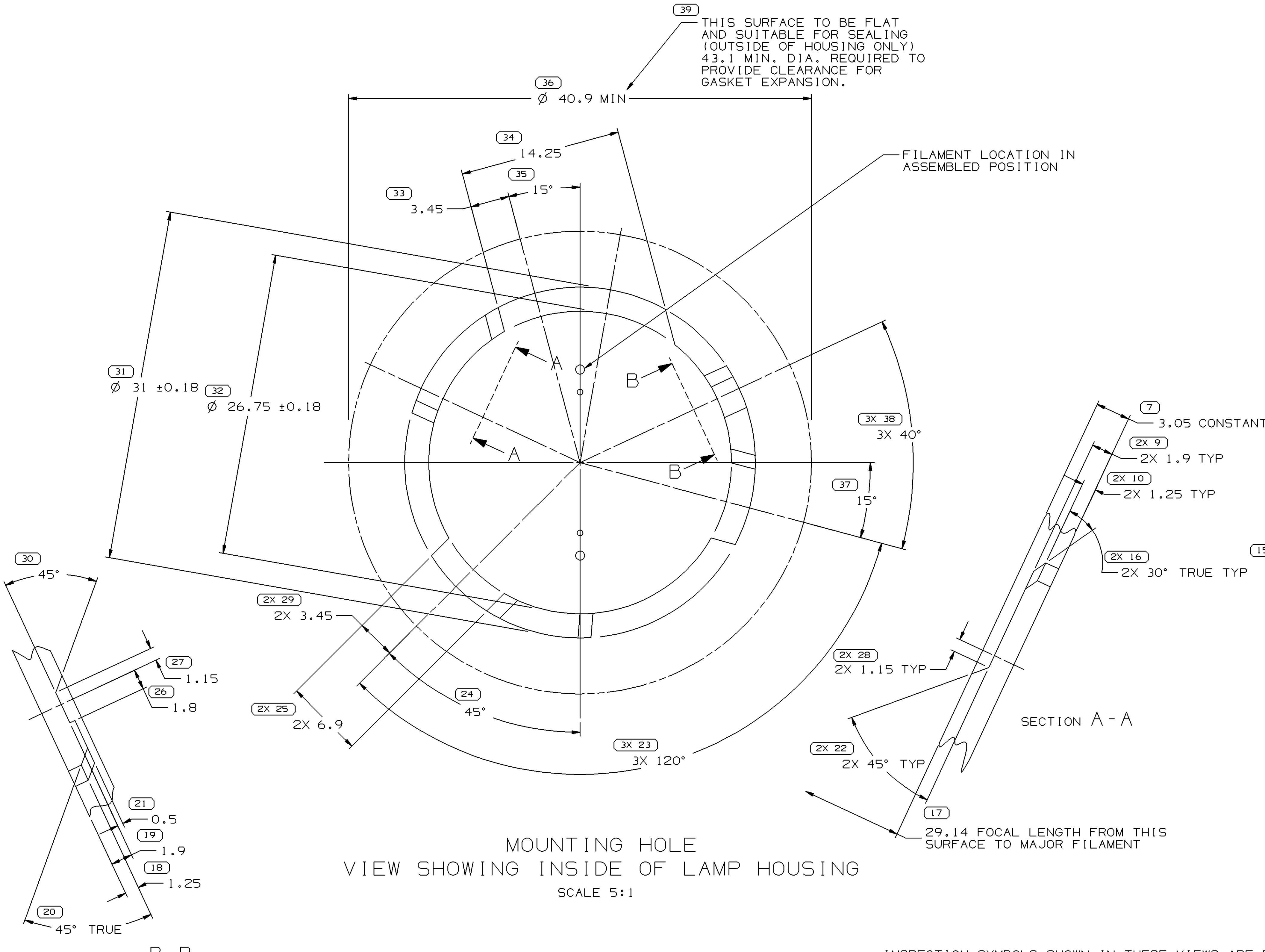
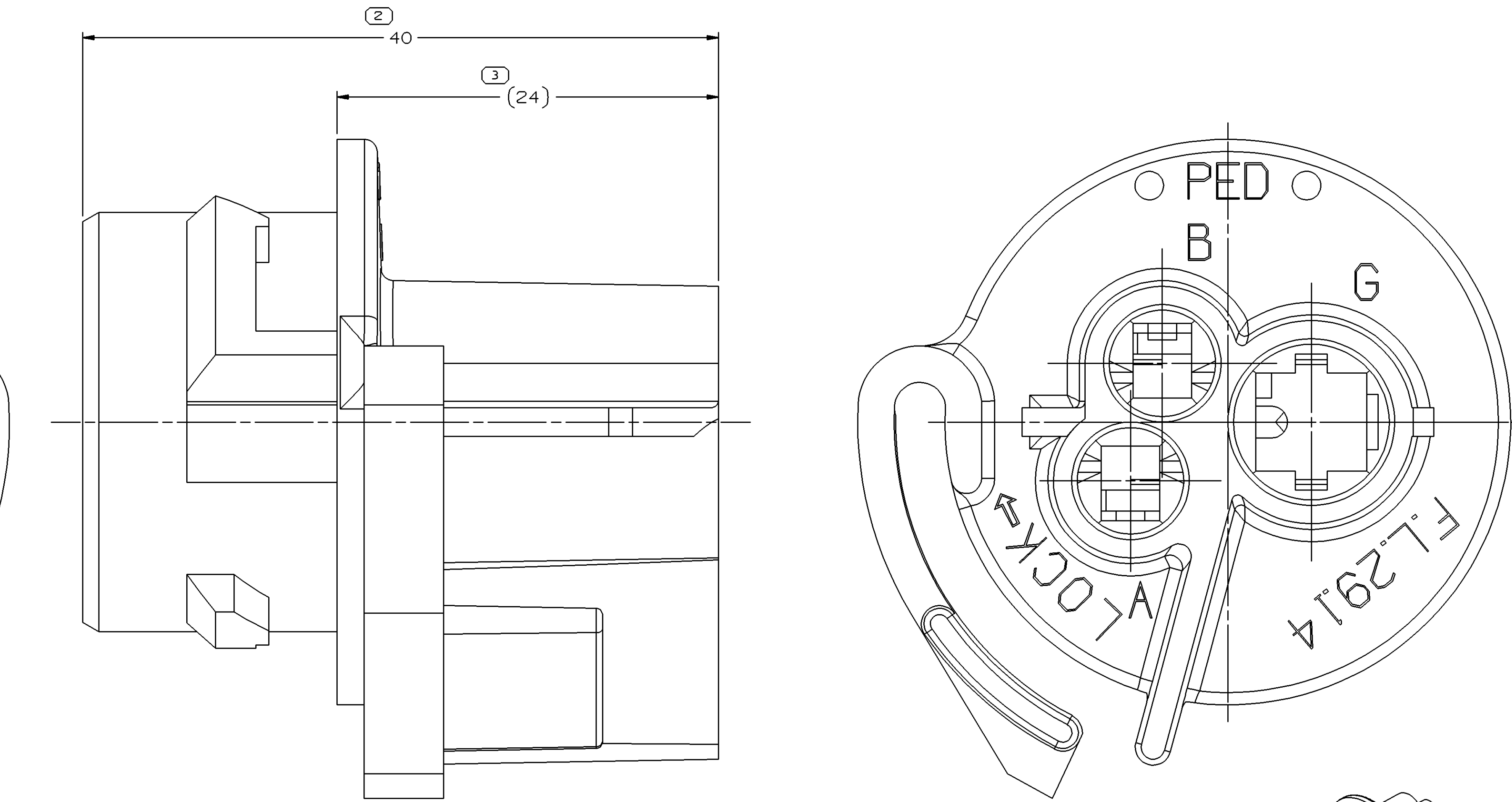
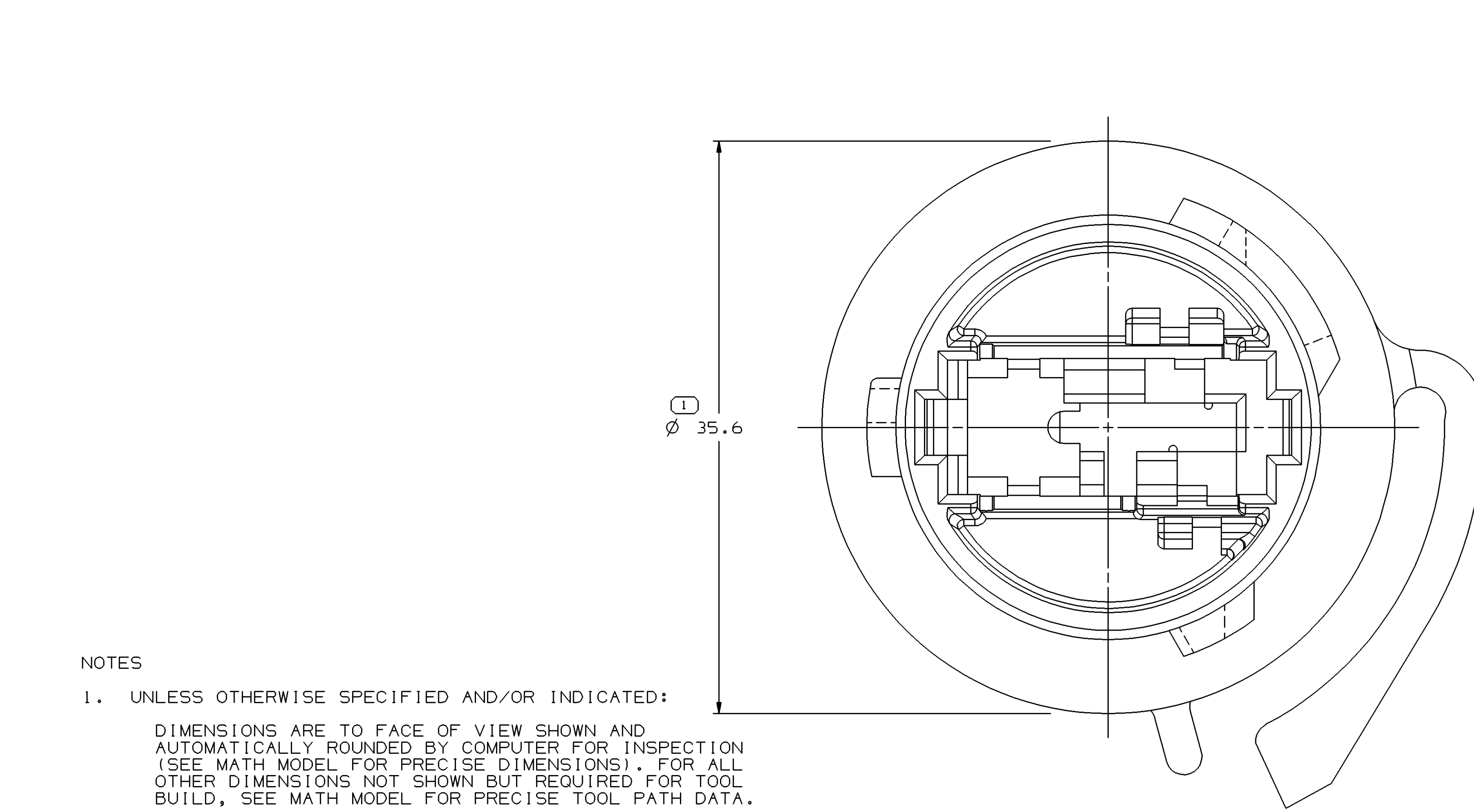


SYMBOL DEFINITION		MISSING SYMBOLS	
A DIMENSION WITHOUT AN INSPECTION REPORT SYMBOL DOES NOT REQUIRE INSPECTION. IT MAY BE CONTROLLED ON THE INDIVIDUAL COMPONENT DRAWING.	TOTAL NO OF INSPECTIONS REQUIRED	51	NO MISSING SYMBOL NUMBER
	LAST NO. USED	40	

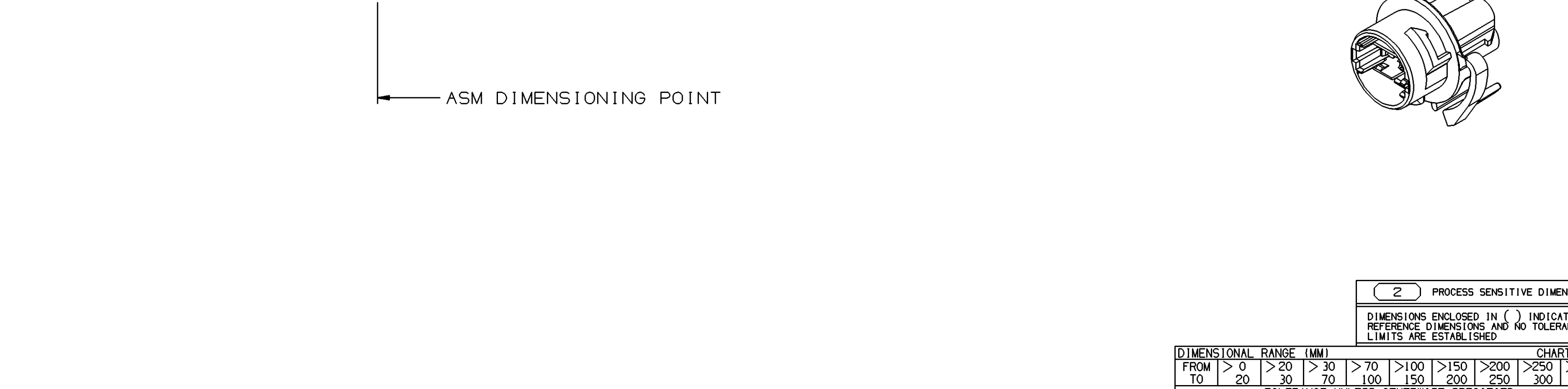
DWO STATUS					REVISION HISTORY					AUTH			
DATE	STG	REV	N/P	CHG	ZONE	Cleared Rev Column, Redrawn to PD and Revised Mat'l Spec					DR	APVD	APVD
070002	R	03	-	-							231057	JFB	JAA
102MY05	R	04	-	-		REVISED GRAPHICS					267563	JFB	JAA



INSPECTION SYMBOLS SHOWN IN THESE VIEWS ARE FOR REFERENCE ONLY



- NOTES
- UNLESS OTHERWISE SPECIFIED AND/OR INDICATED: DIMENSIONS ARE TO FACE OF VIEW SHOWN AND AUTOMATICALLY ROUNDED BY COMPUTER FOR INSPECTION (SEE MATH MODEL FOR PRECISE DIMENSIONS). FOR ALL OTHER DIMENSIONS NOT SHOWN BUT REQUIRED FOR TOOL BUILD, SEE MATH MODEL FOR PRECISE TOOL PATH DATA.
  - MATERIAL RECYCLING CODE PER ISO 11469. (2.3)X(0.1) CHARACTERS AS SHOWN TO BE LOCATED ON ANY EXTERIOR SURFACE. OPTIONAL CONSTRUCTION TO BE NO MATERIAL RECYCLING CODE.
  - THIS PART IS NOT CONTROLLED FOR AUTOMATIC FEEDING.
  - THIS PART ACCEPTS THE FOLLOWING COMPONENTS OR EQUIVALENT:  
GASKET 12129909  
SECONDARY LOCK 15305473  
BULB 09441839
  - CAVITIES A AND B ARE IDENTICAL, EXCEPT AS SHOWN.
  - CAVITIES A AND B TO ACCEPT 12092058 TERMINAL OR EQUIVALENT.
  - CAVITY G ACCEPTS 12092030 TERMINAL OR EQUIVALENT.
  - (2.3)X(0.1) RAISED DELPHI CORPORATE BRAND TO BE LOCATED ON ANY EXTERIOR SURFACE, PREFERABLY VISIBLE AT FINAL ASSEMBLY. OPTIONAL CONSTRUCTION TO BE "PED" OR NO LOGO.



DIMENSIONAL RANGE (MM)		CHART E1	
FROM	TO	TOLERANCE UNLESS OTHERWISE SPECIFIED	REFERENCE
> 0	> 20	> 0.15	1
> 20	> 30	> 0.2	
> 30	> 40	> 0.3	2
> 40	> 50	> 0.4	
> 50	> 60	> 0.5	3
> 60	> 70	> 0.6	
> 70	> 80	> 0.8	4
> 80	> 90	> 1.0	
> 90	> 100	> 1.2	5
> 100	> 150	> 1.5	
> 150	> 200	> 2.0	6
> 200	> 250	> 2.5	
> 250	> 300	> 3.0	7
> 300	> 400	> 4.0	

DWO TYPE		PART DRAWING	
STYLE	DISTR CODE	UNLESS OTHERWISE SPECIFIED	
10.641	D	THIS DOCUMENT IS IN ACCORDANCE WITH ASME Y14.5M-1994 AS MODIFIED BY THE 2003 DIMENSIONING AND TOLERANCING ADDENDUM - 1997. ALL DIMENSIONS ARE TO UNLESS OTHERWISE SPECIFIED TOLERANCE UNLESS OTHERWISE SPECIFIED. DIMENSIONS ARE IN MILLIMETERS.	
THIRD ANGLE PROJECTION		DO NOT SCALE	
USE MATH DATA		UNLESS OTHERWISE SPECIFIED	

**DELPHI**  
DELPHI PACKARD ELECTRIC SYSTEMS  
WARREN, OH

DR	DATE
JERRI L. BOZIO	17MR89
RUBERTO	29MR89
REEDY	20AP89
T. GENT	20AP89

UNLESS OTHERWISE SPECIFIED:  
SUBSTANCES OF CONCERN AND RECYCLED CONTENT PER DELPHI 10949001

MATERIAL: M229001 PA66 GF14 HS 1M-BLK

DRAWING NAME: CONN 3 F LP SOC HARDSHELL BLK SLD W3

DRAWING NUMBER: 12092378

SIZE: A0  
SCALE: 5:1  
FRAME NO: 1 OF 1  
SHEET NO: 1 OF 1  
DATE: 04