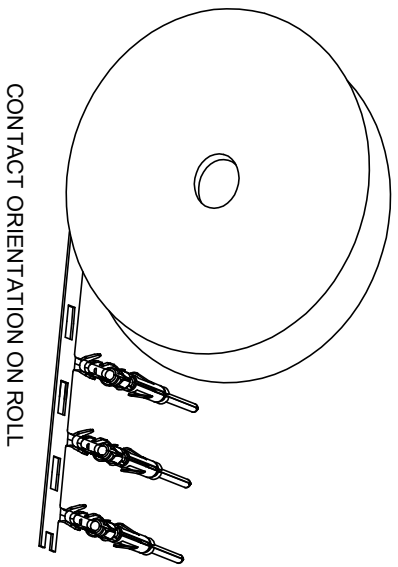


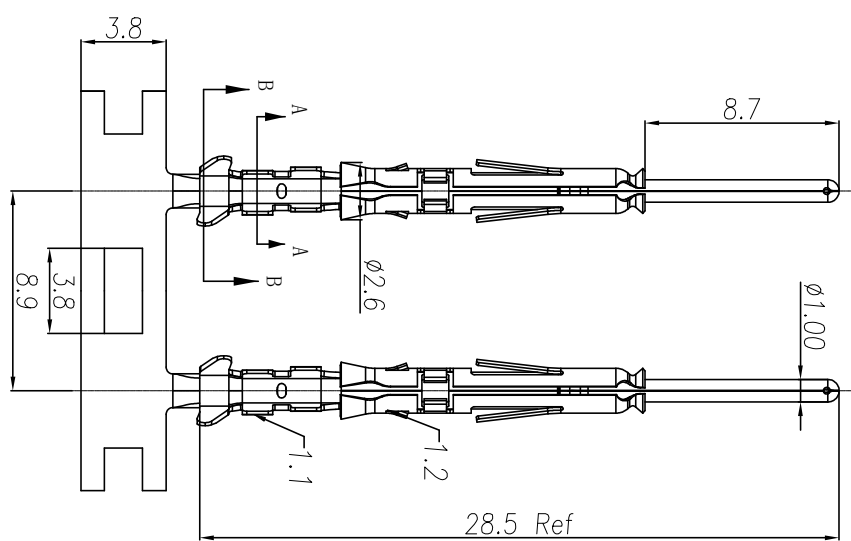
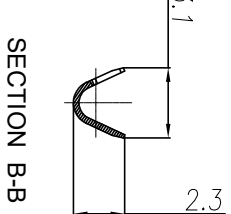
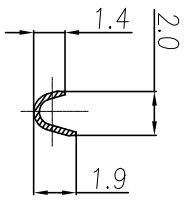
REVISIONS					
REV	ECO	DESCRIPTION	DATE	BY	APPR
B1	-	RELEASED DRAWING	JAN-18-2014	ARROW	TOMMY
B2	-	CHANGE HAND CRIMPER	Nov-8-19	Flan	Tommy



NOTES: (UNLESS OTHERWISE SPECIFIED)

- MATERIAL:
 - CONTACT BODY: COPPER ALLOY.
 - OUTER SPRING: STAINLESS STEEL.
- SPECIFICATIONS:
 - CURRENT RATING: 5A MAX.
 - TERMINATION TYPE: CRIMPING.
 - WIRE RANGE: 24~26AWG.
 - WIRE INSULATION DIA(MAX): \varnothing 2.2mm.
- ROHS COMPLIANT.
- ALL DIMENSIONS ARE FOR REFERENCE USE ONLY.
- AVAILABLE TOOLS:
 - HAND CRIMPER: MFX-3958 (B2)
 - CRIMP APPLICATOR: MFX-3957.
 - EXTRACTION TOOL: QXRT20.

P/N	CONTACT PLATING(MATING AREA)
SP24W1T	TIN PLATING OVER NICKEL.
SP24W1F	GOLD FLASH PLATING OVER NICKEL.
SP24W1G10	10 μ " GOLD PLATING OVER NICKEL.
SP24W1G15	15 μ " GOLD PLATING OVER NICKEL.
SP24W1G30	30 μ " GOLD PLATING OVER NICKEL.



QUANTITY	PART NUMBER	DESCRIPTION	ITEM

UNLESS OTHERWISE SPECIFIED			
1) All dimensions are in millimeters.	DRAWN:	RAI	Nov-8-19
2) Tolerances are as follows:	CHECKED:	MWH	Nov-8-19
1 Pt. DEC 2019	ENGINEER:		
3 Pt. DEC 2018	APPROVE:	Tommy	Nov-8-19
3) Note reference = Δ	CUSTOMER:		

MATERIAL SPECIFICATIONS			
PROCESS SPECIFICATIONS	THIS DRAWING IS SUPPLEMENTARY TO THE DRAWING SPECIFICATIONS AND PERFORMANCE DATA OF THE MANUFACTURING CORPORATION. NO RIGHTS OF REPRODUCTION ARE IMPLIED. ALL MANUFACTURING VARIATIONS		
NEXT ASBY	SCALE:	NONE	SHEET: 1 OF 1

MATERIALS LIST

Amphenol

Sine Systems - www.amphenol-sine.com
44724 Montley Drive
Clinton Township, MI 48038

ECO-MATE PIN CONTACT.
STAMPED, 24-26AWG, SIZE 20