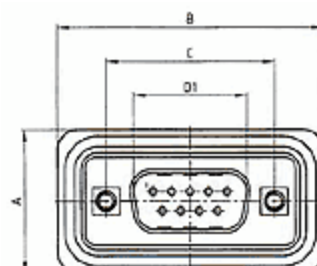
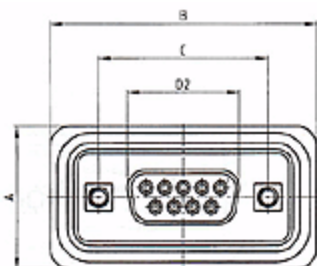




Water resistant D-Sub Connector
Solder pin straight
Termination type R

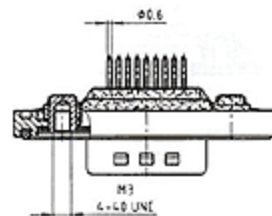
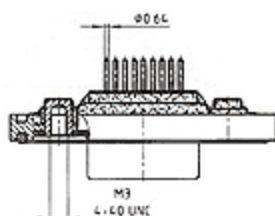
No. of pos.	A +0,2	B +0,2	C	D1 +0,25	D2 -0,25	E -0,30
9	21,10	39,40	25,00 ^{+0,12 -0,13}	16,79	16,46	5,62
15	21,10	47,70	33,30 ^{+0,15 -0,10}	25,12	24,79	5,62
25	21,10	61,40	47,04 ^{±0,13}	38,84	38,50	5,49
37	21,10	77,90	63,50 ^{±0,13}	55,30	54,96	5,49
50	23,90	75,50	61,10 ^{+0,14 -0,11}	52,68	52,55	5,49



Mounting Type

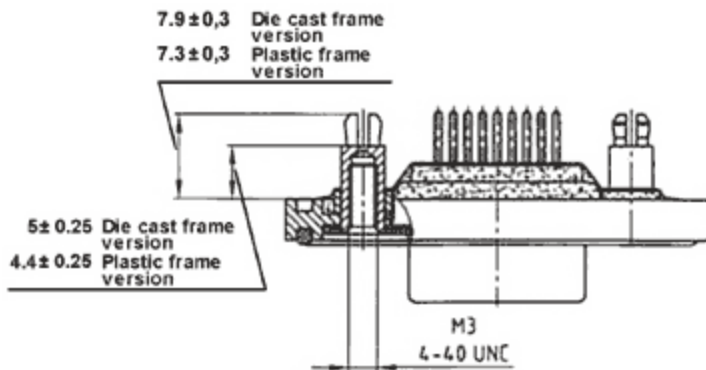
M3 B2

threaded insert 4-40 UNC B3

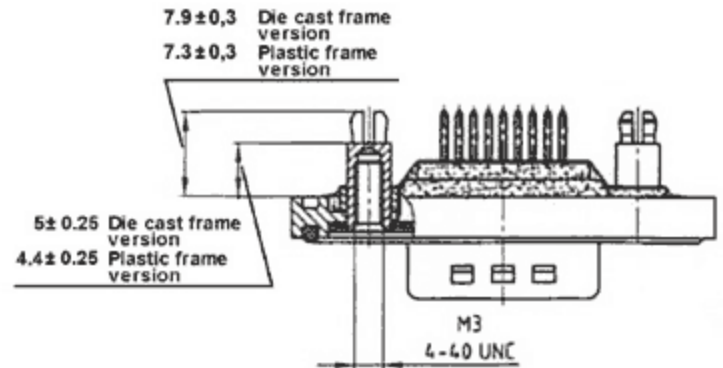


Mounting Type

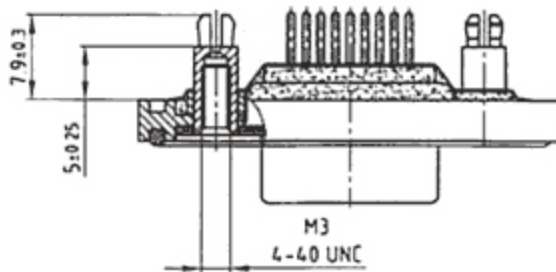
Clip M3 E1 threaded spacer-clip 4-40 UNC E2



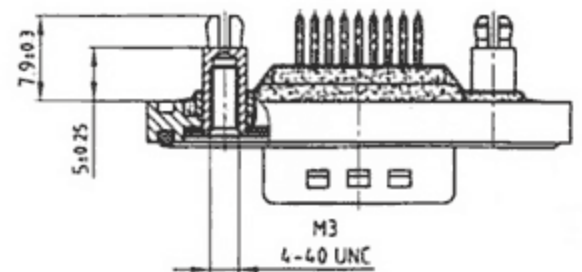
No. of pos. 9-37



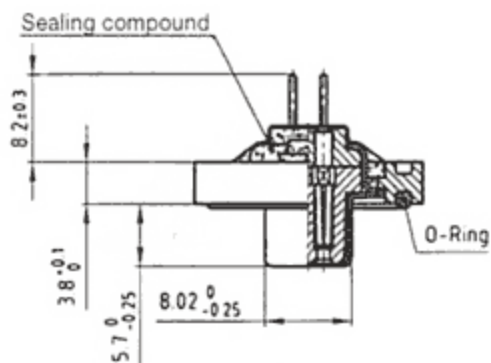
No. of pos. 9-37



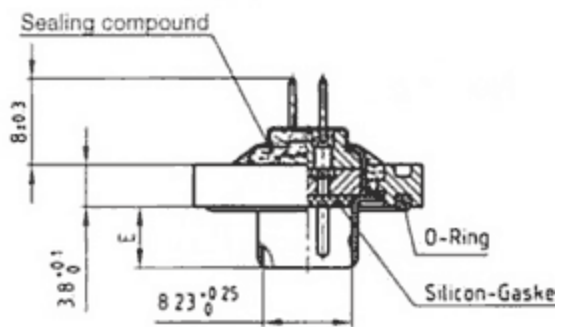
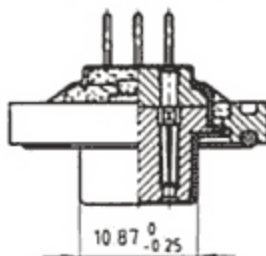
No. of pos. 50



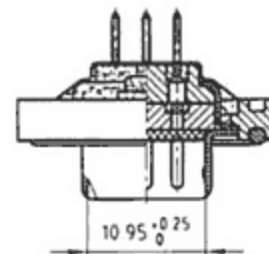
No. of pos. 50



No. of pos. 50



No. of pos. 50



Order example:	6	S	T	D	0	9	S	A	M	9	9	B	3	0	X												
Product line 2* = Shell yellow chromate (plug without ground indent), black plastic frame. 4 = Shell tin plated (plug with ground indent), black plastic frame. RoHS compliant. 6 = Shell tin plated (plug with ground indent). Die cast frame, bright nickel plated. (Industry preferred type). RoHS compliant. 7* = Shell yellow chromate (plug without ground indent). Die cast frame, bright nickel plated. 8* = Shell stainless steel (plug with ground indent). Die cast frame, bright nickel plated (or without frame). RoHS compliant. 9* = Shell stainless steel (plug with ground indent). Black plastic frame. RoHS compliant. * not applicable for STF and HDF series. (gold plated shells are available upon request)																											
Contact arrangement STD = D-Subminiature- standard STF = D-Subminiature- standard, filtered HDD = D-Subminiature- High Density HDF = D-Subminiature- High Density filtered																											
<table border="1"> <thead> <tr> <th>No. of pos. for STD and STF</th> <th>No. of pos. for HDD and HDF</th> </tr> </thead> <tbody> <tr> <td>09 = 09-pos.</td> <td>15 = 15-pos.</td> </tr> <tr> <td>15 = 15-pos.</td> <td>26 = 26-pos.</td> </tr> <tr> <td>25 = 25-pos.</td> <td>44 = 44-pos.</td> </tr> <tr> <td>37 = 37-pos.</td> <td>62 = 62-pos.</td> </tr> <tr> <td>50 = 50-pos.</td> <td>78 = 78 pos.</td> </tr> </tbody> </table>																No. of pos. for STD and STF	No. of pos. for HDD and HDF	09 = 09-pos.	15 = 15-pos.	15 = 15-pos.	26 = 26-pos.	25 = 25-pos.	44 = 44-pos.	37 = 37-pos.	62 = 62-pos.	50 = 50-pos.	78 = 78 pos.
No. of pos. for STD and STF	No. of pos. for HDD and HDF																										
09 = 09-pos.	15 = 15-pos.																										
15 = 15-pos.	26 = 26-pos.																										
25 = 25-pos.	44 = 44-pos.																										
37 = 37-pos.	62 = 62-pos.																										
50 = 50-pos.	78 = 78 pos.																										
Contact type P = Plug connector S = Female connector *not applicable for STF and HDF																											
Plating code for contacts A = Quality class 3 = 50 Mating cycles B = Quality class 2 = 200 Mating cycles C = Quality class 1 = 500 Mating cycles U = telecom application >= 500 Mating cycles available on request only																											
Termination applies for signal contacts only M = Solder cup *not applicable for HDF R = PC tail straight T = PC tail angled, .188 U = PC tail angled, .276 Z = PC tail angled, .463 Y = PC tail angled, .220 (only for High Density „HDD“ and „HDF“)																											
Capacitance 01 = 180 pF ± 20% Tolerance 03 = 370 pF ± 20% Tolerance 04 = 830 pF ± 20% Tolerance 05 = 1300 pF ± 20% Tolerance * not available for HDF 99 = without filter for STD and HDD																											
Mounting style A1 = riveted through hole for cable mount B2 = threaded insert M3 B3 = threaded insert 4-40 UNC B4 = threaded lock for front mounting M 3 B5 = threaded lock for front mounting 4-40 UNC B7 = threaded lock for front panel mounting UNC 4-40 and with rear stud fixed for panel thickness 3.1 mm B71 = threaded lock for front panel mounting UNC 4-40 and with rear stud fixed for panel thickness 6.4 mm B72 = threaded lock for front panel mounting UNC 4-40 and with rear stud fixed for panel thickness 8.9 mm B73 = threaded lock for front panel mounting UNC 4-40 and with rear stud fixed for panel thickness 12.5 mm E1 = threaded rear spacer-Clip M3, PCB .063, Standard E2 = threaded rear spacer-Clip 4-40 UNC, PCB .063, Standard S1 = metal bracket, threaded insert M3 S2 = metal bracket, threaded insert 4-40 UNC S3 = metal bracket, threaded insert M3 and Clip S4 = metal bracket, threaded insert 4-40 UNC and Clip R1 = metal bracket, threaded insert M3 R2 = metal bracket, threaded insert 4-40 UNC R3 = metal bracket, threaded insert M3 and Clip R4 = metal bracket, threaded insert 4-40 UNC and Clip																											
Standard- and special version 0X = standard																											