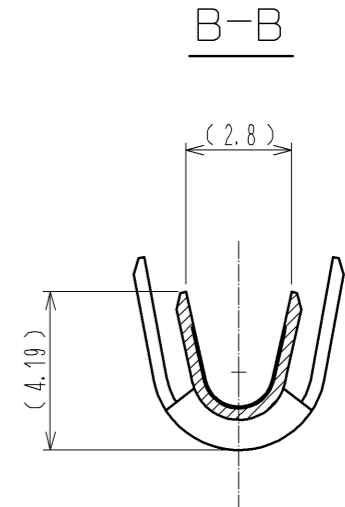
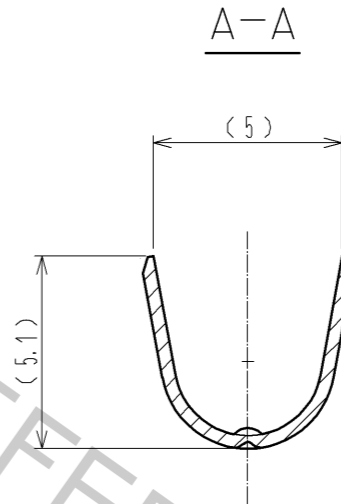
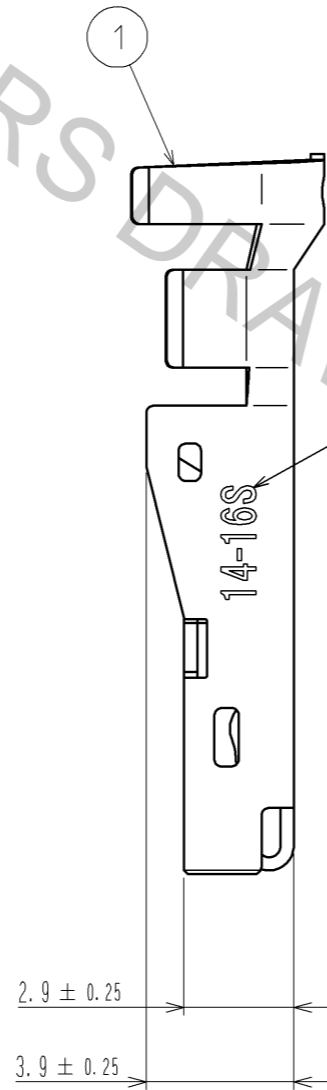
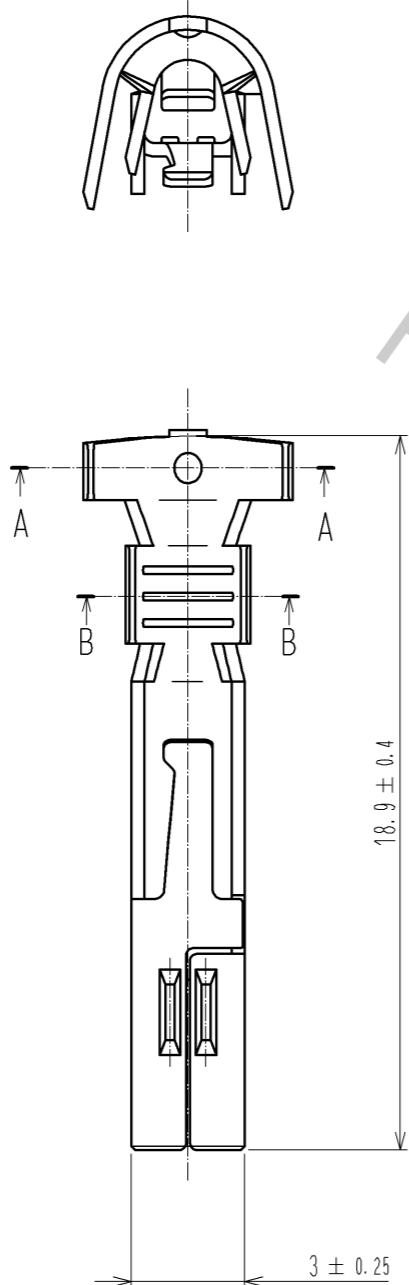
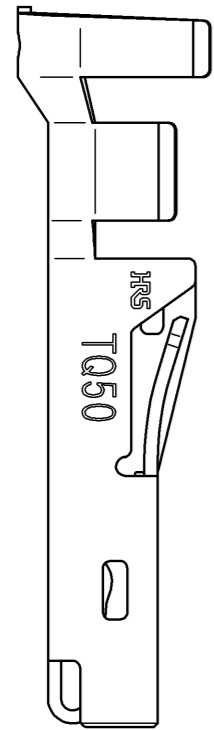


Dec.1.2018 Copyright 2018 HIROSE ELECTRIC CO., LTD. All Rights Reserved.
 In case that the application demands a high level of reliability, such as automotive,
 please contact a company representative for further information.



- NOTES
1. APPLICABLE WIRE IS AWG #14~#16. (WV0, WL1)
INSURATION DIAMETER ϕ 3.90mm MAX.
 2. APPLICABLE CRIMPING MACHINE AND CRIMPING CONDITIONS (CRIMP HEIGHT etc.) WILL BE SPECIFIED ACCORDING TO AWG # OR WIRE APPLIED.
 3. ONE PACKAGE CONSISTS OF 100 PCS.
 4. REFER TO ATAI-E2959 FOR CRIMP QUALITY STANDARDS.

NO.	MATERIAL	FINISH . REMARKS	NO.	MATERIAL	FINISH . REMARKS
1	COPPER ALLOY				
		CONTACT AREA : GOLD PLATING 0.76 μ m min			
		TERMINAL AREA : TIN PLATING 1 μ m min			
		UNDER PLATING : NICKEL PLATING 0.5 μ m min			

UNITS	SCALE	COUNT	DESCRIPTION OF REVISIONS	DESIGNED	CHECKED	DATE
mm	5 : 1	1	DIS-E-004910	TY. MIURA	NM. NISHIMATSU	14. 01. 20
APPROVED : RI. TAKAYASU		12. 12. 11	DRAWING NO.		EDC3-128202-00	
CHECKED : AH. KODAMA		12. 12. 11	PART NO.		TQ50-1416SCA	
DESIGNED : TY. MIURA		12. 12. 10	CODE NO.		CL236-3205-6-00	
DRAWN : TY. MIURA		12. 12. 10				