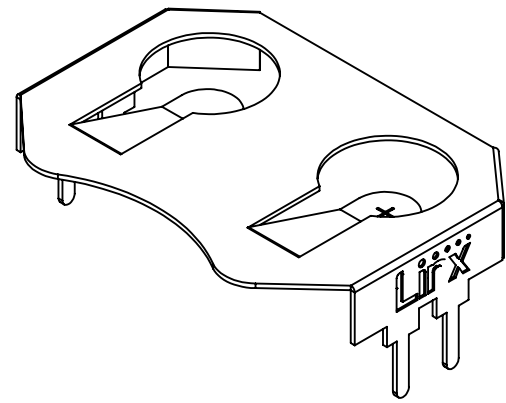
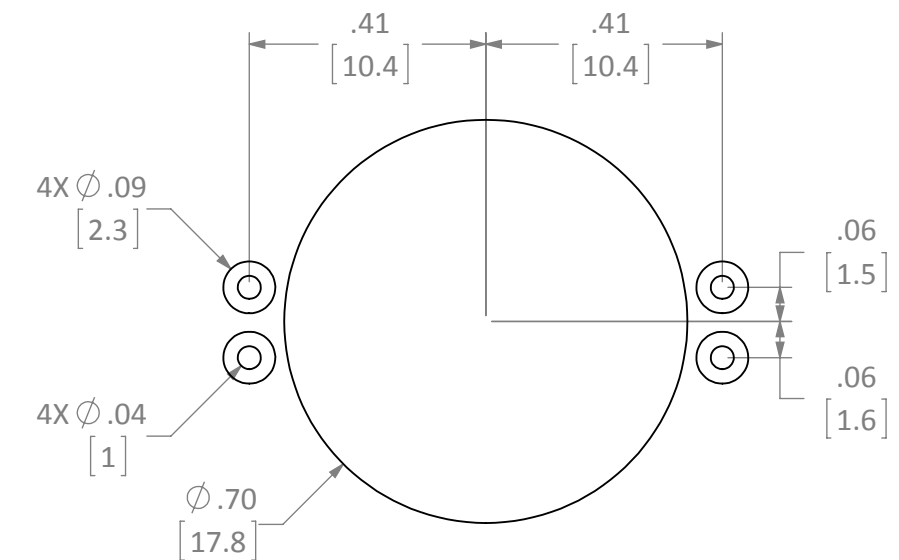
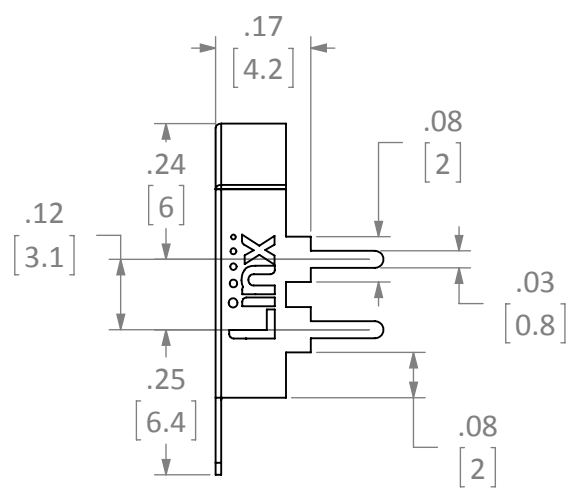
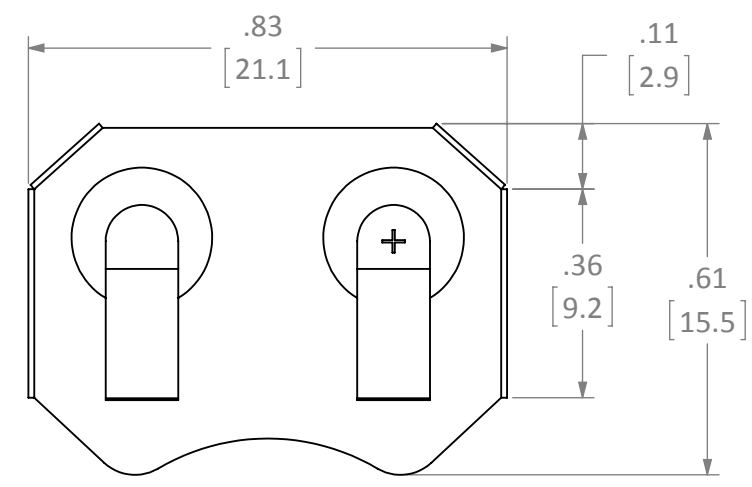


| REVISIONS | | | |
|-----------|--------------------------------------|----------|------|
| REV | DESCRIPTION | DATE | APPV |
| A | INITIAL RELEASE OF INTERNAL DOCUMENT | 2-FEB-12 | SAH |



RECOMMENDED FOOTPRINT



- NOTES: (UNLESS OTHERWISE SPECIFIED)
1. ALL DIMENSIONS ARE IN INCHES [mm].
 2. DIMENSIONS APPLY AFTER FINISHING.
 3. MANUFACTURE TO BE COMPLIANT WITH EU RoHS DIRECTIVE.
 4. SAFETY BREAK ALL SHARP CORNERS AND EDGES .02 MAXIMUM.

WARNING: THIS DRAWING CONTAINS PROPRIETARY INFORMATION THAT IS THE SOLE PROPERTY OF LINX TECHNOLOGIES, AND SHALL BE TREATED AS SUCH. NO DISCLOSURE OR REPRODUCTION OF THIS DOCUMENT IS PERMITTED, IN WHOLE OR IN PART, WITHOUT THE EXPRESS WRITTEN PERMISSION OF LINX TECHNOLOGIES OR ITS DESIGNATED AGENTS.

Linx 159 ORT LANE
MERLIN, OR 97532

| | | |
|---|---|------------------------------|
| MATERIAL: PHOSPHOR BRONZE #C-5191 | INTERPRET DIMENSIONS AND TOLERANCES PER ASME Y14.5. SURFACE FINISH: $\sqrt{32}$ ANGLES: $\pm 1^\circ$ TOLERANCES: .X $\pm .1$.XX $\pm .01$.XXX $\pm .005$ | PROJECTION: |
| FINISH: NICKEL PLATE | DRAWN: B.MURPHY ENGR: S.HOGAN | DT: 2-FEB-12 DT: 2-FEB-12 |

| | | |
|---|--|-----------------|
| TITLE: BATTERY HOLDER OUTLINE CR2032,CR2025 THROUGH HOLE MOUNT | | |
| SIZE B | DWG. NO. BAT-HLD-001-THM-OTL | REV A |
| SCALE: 3:1 | DO NOT SCALE DRAWING | SHEET 1 OF 1 |