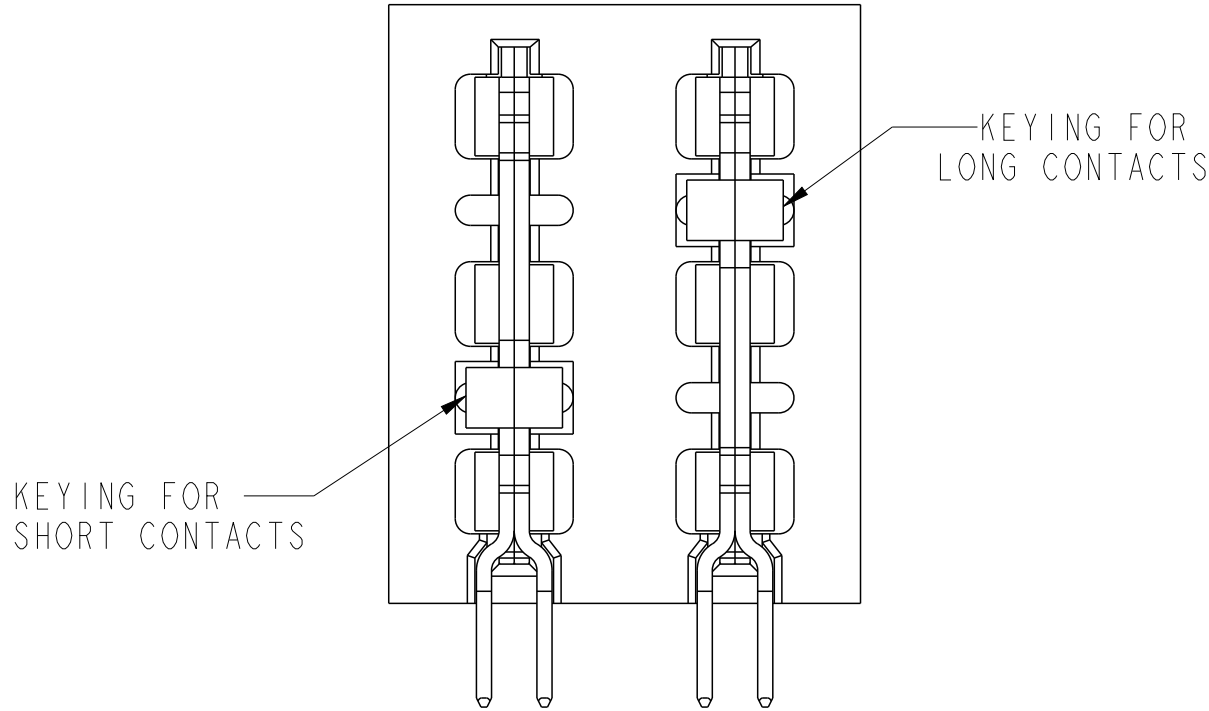
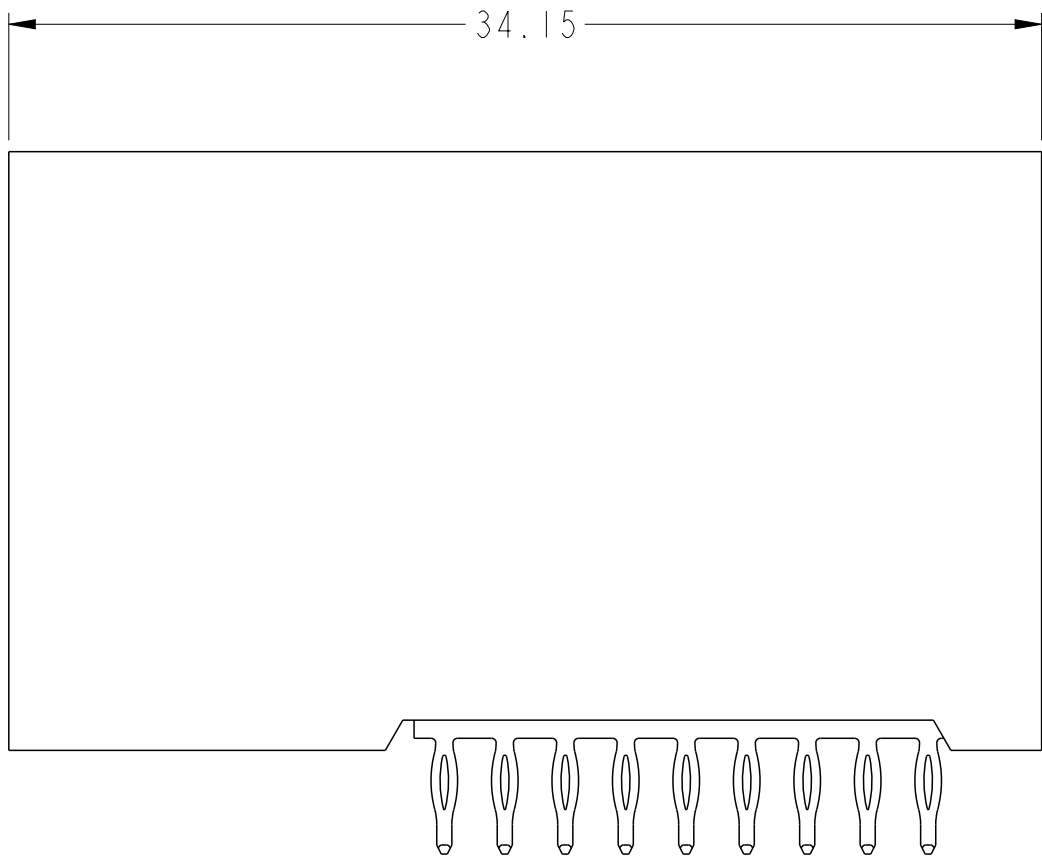
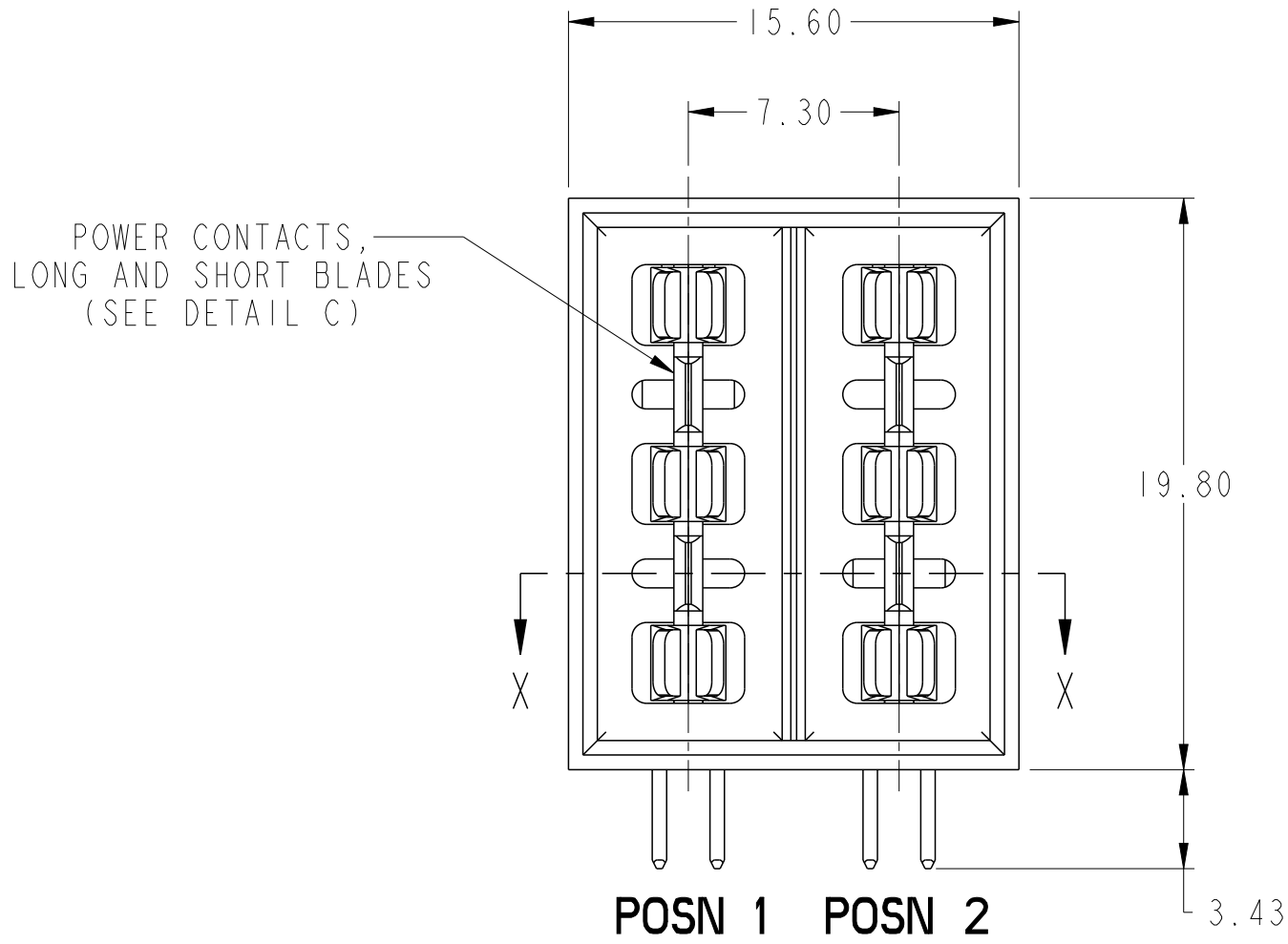
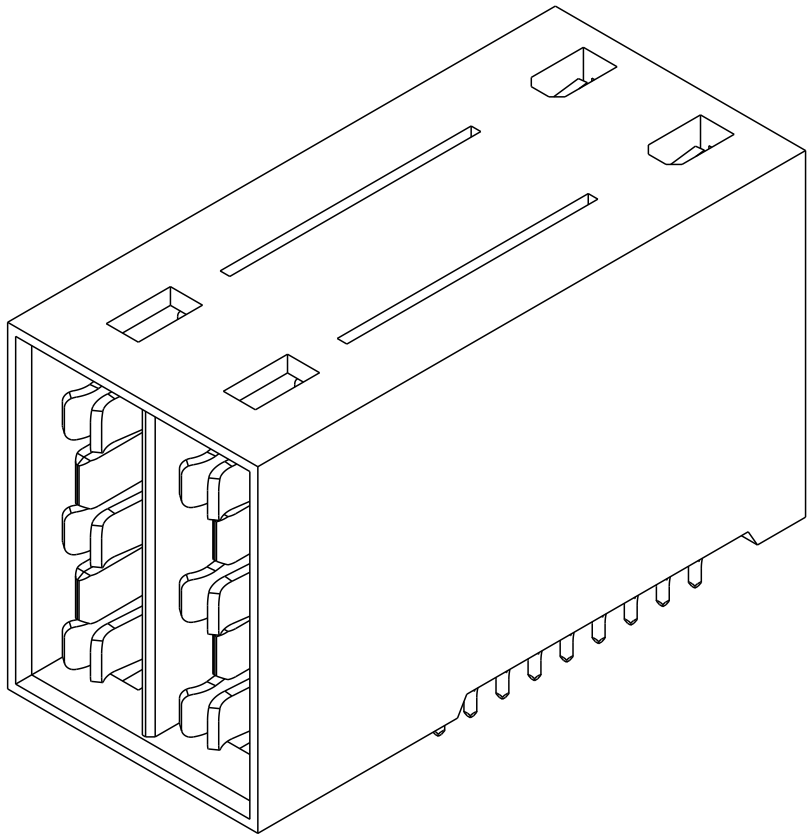
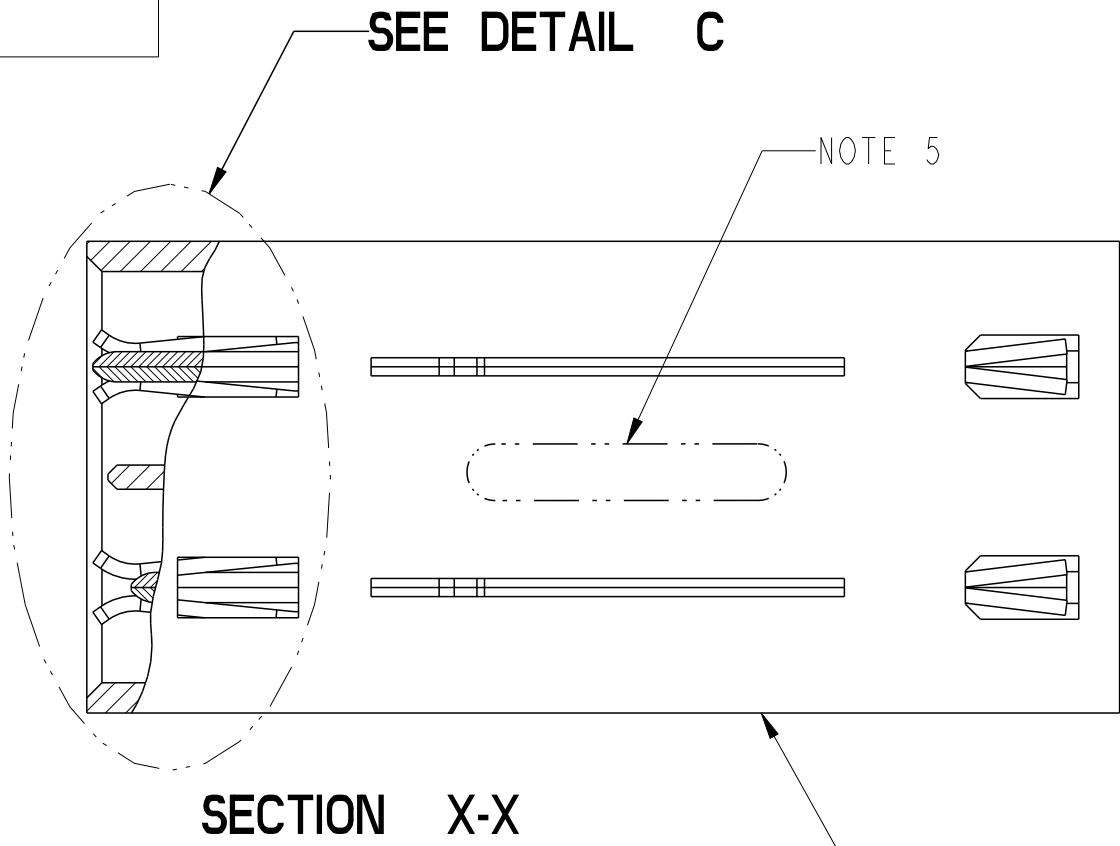
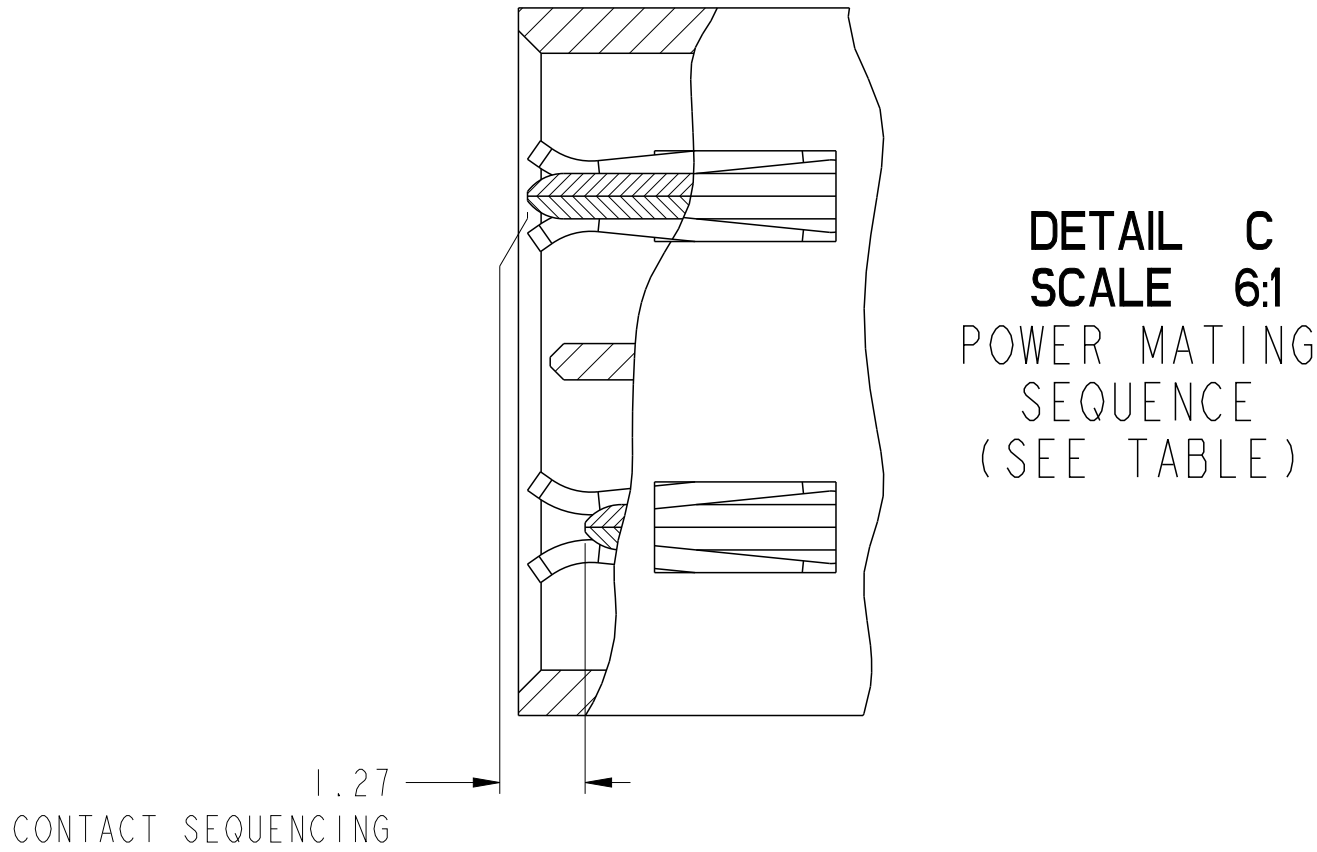


1	2	3	4	5	6	7	8
PART NUMBER	FIRST MATE (LONG) CONTACT POSN	SECOND MATE (SHORT) CONTACT POSN	TAIL TYPE	HALOGEN OPTION			
10078770-001LF	NONE	POSN 1 & 2	PRESS-FIT	HALOGEN			
10078770-002LF	POSN 1	POSN 2					
10078770-003LF	POSN 1 & 2	NONE					
10078770-001LHLF	NONE	POSN 1 & 2		LOW HALOGEN			
10078770-002LHLF	POSN 1	POSN 2					
10078770-003LHLF	POSN 1 & 2	NONE					



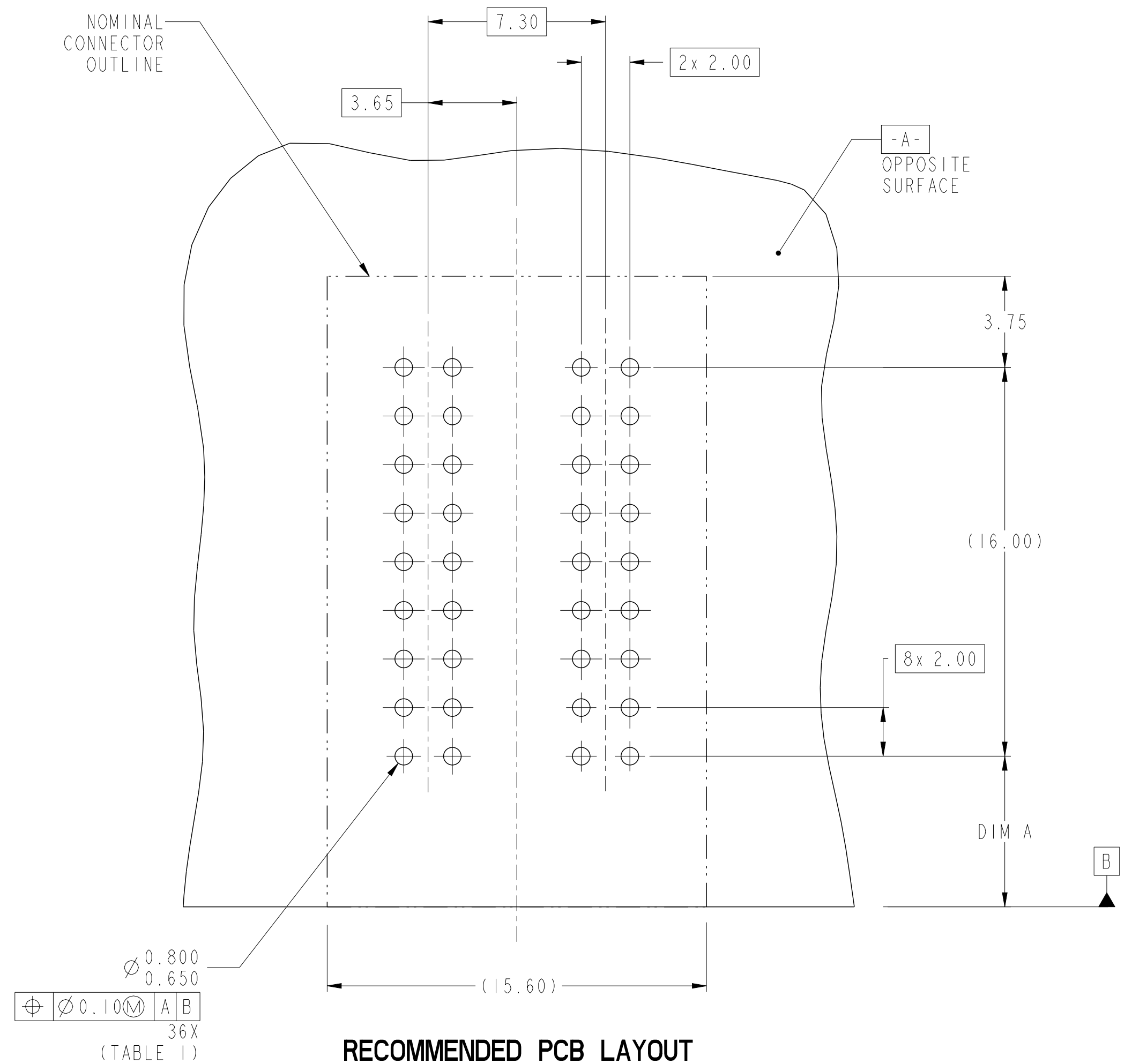
10078770-002LF SHOWN

spec ref		*		dr		NotFound DuWa		2010/04/29		projection		MM		size		A2		scale		4:1	
tolerance std		TOLERANCES UNLESS OTHERWISE SPECIFIED		eng		De-Ming Lu		2017/01/10						ecn no		ELX-DG-25746-1					
chr				Fancy Zhang		2017/01/10															
appr				Pei-Ming Zheng		2017/01/11		product family						HCl		rel level		Released			
surface				linear		0.X		±0.5		Amphenol FCi		title		ASSEMBLY, HEADER, R/A 2 POSN ISOLATED POWER CONTACT		dwg no		10078770		rev	
		0.XX		±0.25																	
		0.XXX		±0.10																	
ISO 1302		angular		0°		±2°		cat. no.		-		Product - Customer Drw		sheet 1 of 2							

1	2	3	4	5	6	7	8		
TOP LAYER DESCRIPTION	TABLE 1 (HCI POWER) PLATED THROUGH-HOLE REQUIREMENTS								
	DRILLED HOLE DIAMETER	COPPER THICKNESS	TIN-LEAD THICKNESS	NICKEL THICKNESS	GOLD THICKNESS	TIN THICKNESS	SILVER THICKNESS	FINISHED HOLE DIAMETER	
	TIN-LEAD	0.81-0.86 (0.85 DRILL)	0.025 - 0.050	0.005 - 0.015	--	--	--	--	0.65 - 0.80
	IMMERSION TIN	0.81-0.86 (0.85 DRILL)	0.025 - 0.050	--	--	--	0.9 - 1.5um	--	0.70 - 0.80
	IMMERSION SILVER	0.81-0.86 (0.85 DRILL)	0.025 - 0.050	--	--	--	--	0.15 - 0.65um	0.70 - 0.80
	COPPER (SEE NOTE 9)	0.81-0.86 (0.85 DRILL)	0.025 - 0.050	--	--	--	--	--	0.70 - 0.80
	GOLD	0.81-0.86 (0.85 DRILL)	0.025 - 0.050	--	0.003 - 0.007	FLASH UP TO 0.0002	--	--	0.69 - 0.80

NOTES:

1. CONNECTOR MATERIALS:
HOUSING: HIGH TEMPERATURE THERMOPLASTIC, BLACK
UL 94V-0 COMPLIANT
CONTACTS: HIGH PERFORMANCE COPPER ALLOY
2. CONTACT FINISH (Ref. GS-12-380 SECTION 5.2)
3. PRODUCT SPECIFICATION: GS-12-380.
4. APPLICATION SPECIFICATION: GS-20-070.
5. PRODUCT MARKING (PRODUCT NUMBER & DATE CODE) ON HOUSING IN AREA SHOWN.
6. MINIMUM NOMINAL PCB THICKNESS: 1.6mm
7. PACKAGING MEETS FCI SPECIFICATION GS-14-1194
8. HOUSING COMPONENT WILL WITHSTAND EXPOSURE TO 260°C
PEAK TEMPERATURE FOR 10 SECONDS IN A CONVECTION, INFRA-RED,
OR VAPOR PHASE REFLOW OVEN.
9. COPPER PLATING THICKNESS IN CENTER OF VIA-HOLE CAN BE
NO MORE THAN 0.003 LESS THAN OTHER AREAS.
10. ALL HOLE SIZES ARE FINISHED HOLE SIZES UNLESS OTHERWISE NOTED.



RECOMMENDED PCB LAYOUT
COMPONENT SIDE
NOTE 6

DIM A	DISTANCE FROM BOARD TO BOARD AT FULLY MATED POSITION (NOMINAL)	PRODUCT LINE APPLICATION
8.70 mm	10.0 mm	Metral High Speed
6.20 mm	12.5 mm (H.M.)	Airmax VS,Zipline
2.20 mm	16.5 mm	XCede

spec ref		*		dr		NotFound DuWa		2010/04/29		projection		size		scale			
tolerance std		TOLERANCES UNLESS OTHERWISE SPECIFIED		eng		De-Ming Lu		2017/01/10				A2		6:1			
ISO 406				chr		Fancy Zhang		2017/01/10				ecn no		ELX-DG-25746-1			
ISO 1101				appr		Pei-Ming Zheng		2017/01/11		product family		-		rel level		Released	
surface		linear		Amphenol FCi		title		ASSEMBLY, HEADER, R/A				dwg no		10078770		rev	
		0.X ±0.5				2 POSN ISOLATED POWER CONTACT											
		0.XX ±0.25				cat. no.		-		Product -		Customer Drw		sheet 2 of 2			
ISO 1302		angular				0° ±2°											