

RP225 Series

High Performance Dual Stage Power Line Filters



3 A to 20 A Chassis Mount Filter

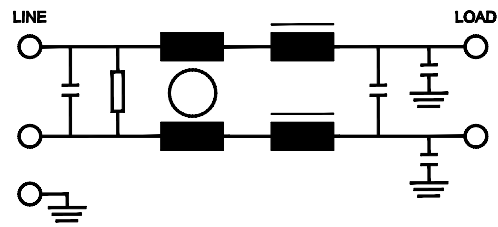
Specifications

| | |
|-------------------------|------------------|
| Operating Frequency | 50/60 Hz |
| Usable Frequency | DC - 400 Hz |
| Max. Operating Voltage* | 250 V +10% |
| Ambient Temperature | -25 to 40°C |
| Climatic Category | 25/100/21 |
| Hipot Rating (L-G) | 2700 VDC |
| Terminals (-T) | QD: 0.25 Tabs |
| Safety Approvals | CSA, UR, EN60939 |

*Available up to 300 VAC. Please contact us to verify specifications.



Electrical Schematic



Part Number/Ordering

| RP225 | -X (Amps) | -Y (Ycap, nF) | -T | Typ. Weight, lbs (kg) |
|-------|--------------|------------------|----|--------------------------|
| | 3 | 0 | QD | 0.8 (0.4) |
| | 4 | 0.47 | | 0.8 (0.4) |
| | 6 | 1 | | 0.8 (0.4) |
| | 10 | 2.2 | | 0.8 (0.4) |
| | 12 | 4.7 | | 0.8 (0.4) |
| | 20 | 10 | | 1.4 (0.6) |

Note: Use any combination of -Y with any -X (Amps) rating
e.g. RP225-20-10-QD (20 Amps with 10 nF Ycap)

Specifications are subject to change. Consult factory to verify specifications.

For more information on our filter products call us at: (800) 527-4362 or (714) 289-0055
LCR, Radius Power, and Filter Concepts are now part of Astrodyne TDI

RP225 Series

High Performance Dual Stage Power Line Filters



3 A to 20 A Chassis Mount Filter

Typical Insertion Loss, dB (50/50 Ohm)

| Freq (MHz) | 0.15 | 0.5 | 1.0 | 10 | 30 |
|---------------|------|-----|-----|----|----|
| 3 Amp | | | | | |
| CM(dB) | 14 | 28 | 30 | 65 | 65 |
| DM(dB) | 26 | 65 | 65 | 55 | 36 |
| 4 Amp | | | | | |
| CM(dB) | 48 | 50 | 50 | 45 | 45 |
| DM(dB) | 65 | 75 | 75 | 65 | 60 |
| 6 Amp | | | | | |
| CM(dB) | 19 | 32 | 36 | 65 | 50 |
| DM(dB) | 30 | 65 | 65 | 55 | 40 |
| 10 Amp | | | | | |
| CM(dB) | 20 | 30 | 34 | 65 | 50 |
| DM(dB) | 26 | 65 | 65 | 52 | 45 |
| 12 Amp | | | | | |
| CM(dB) | 22 | 35 | 40 | 65 | 50 |
| DM(dB) | 33 | 65 | 65 | 55 | 40 |
| 20 Amp | | | | | |
| CM(dB) | 20 | 32 | 65 | 65 | 50 |
| DM(dB) | 26 | 65 | 65 | 50 | 45 |

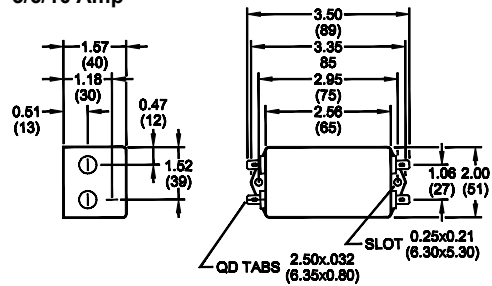
Leakage Current

| Y-cap, nF | mA, 120 V/60 Hz | mA, 250 V/60 Hz |
|-----------|-----------------|-----------------|
| 0 | 0.0 | 0.0 |
| 0.47 | 0.04 | 0.08 |
| 1 | 0.09 | 0.18 |
| 2.2 | 0.2 | 0.4 |
| 4.7 | 0.4 | 0.8 |
| 10 | 0.9 | 1.8 |

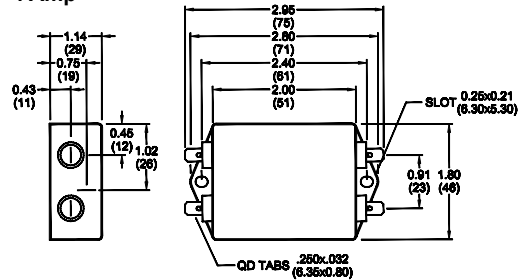
Mechanical Dimensions

TYPICAL TOLERANCE: +/-0.02" (0.50 mm)

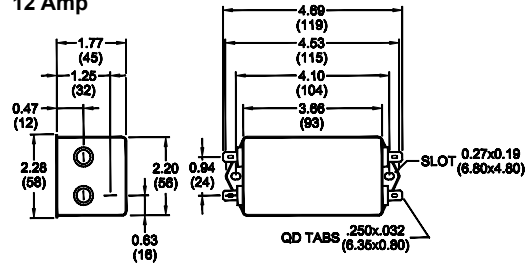
3/6/10 Amp



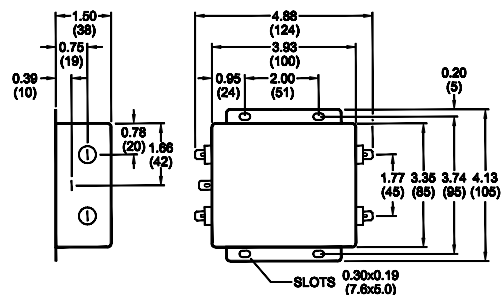
4 Amp



12 Amp



20 Amp



Specifications are subject to change. Consult factory to verify specifications.

For more information on our filter products call us at: (800) 527-4362 or (714) 289-0055
 LCR, Radius Power, and Filter Concepts are now part of Astrodyne TDI