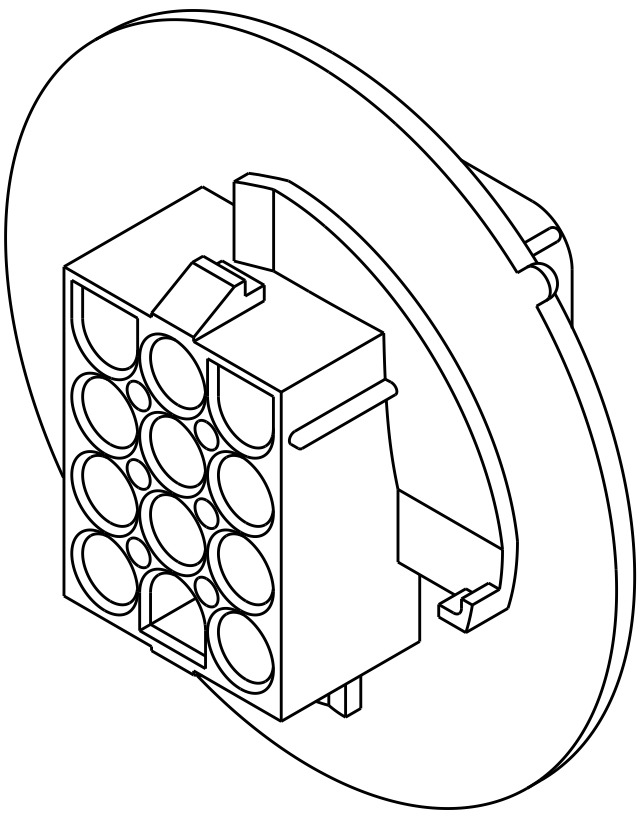
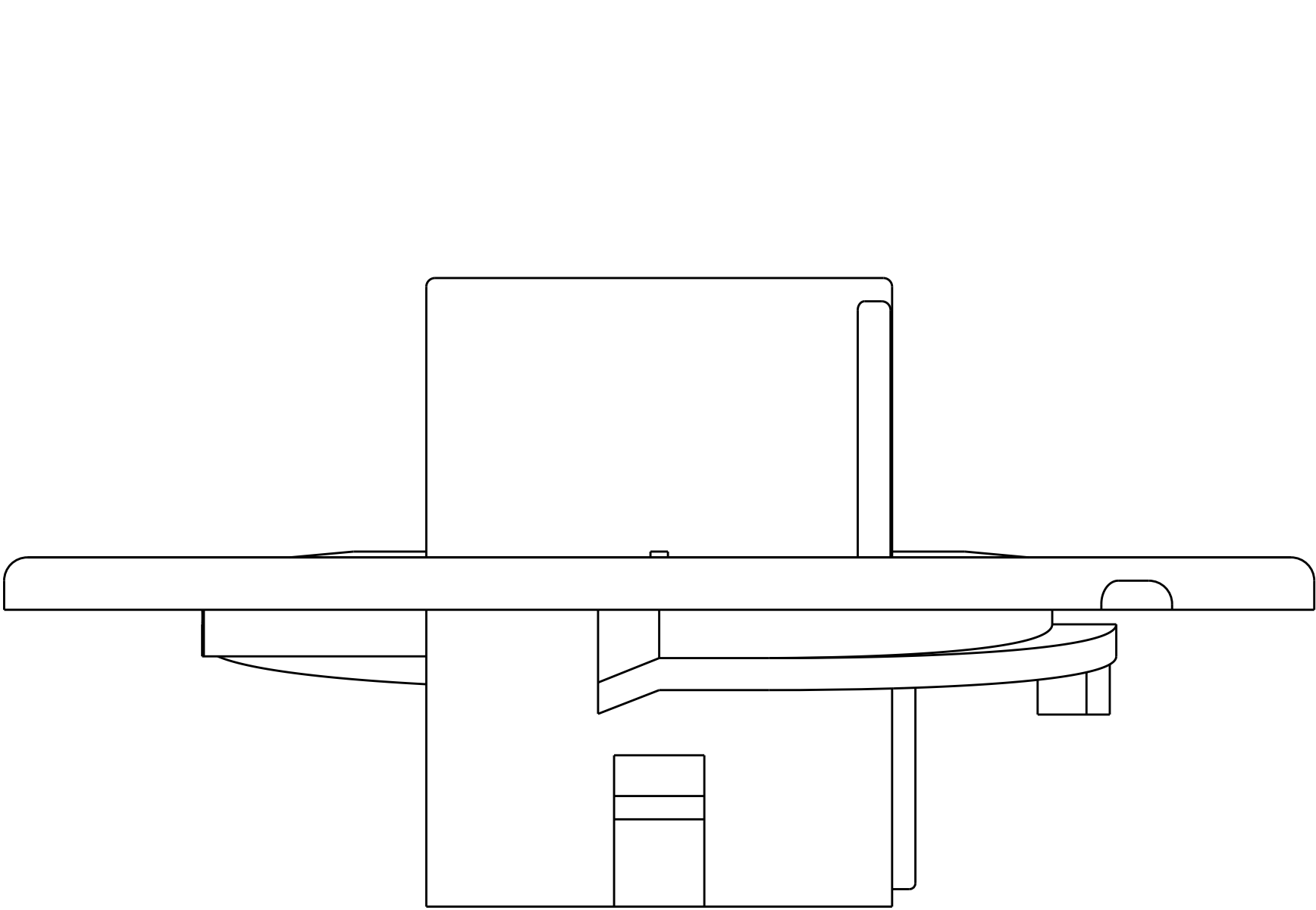
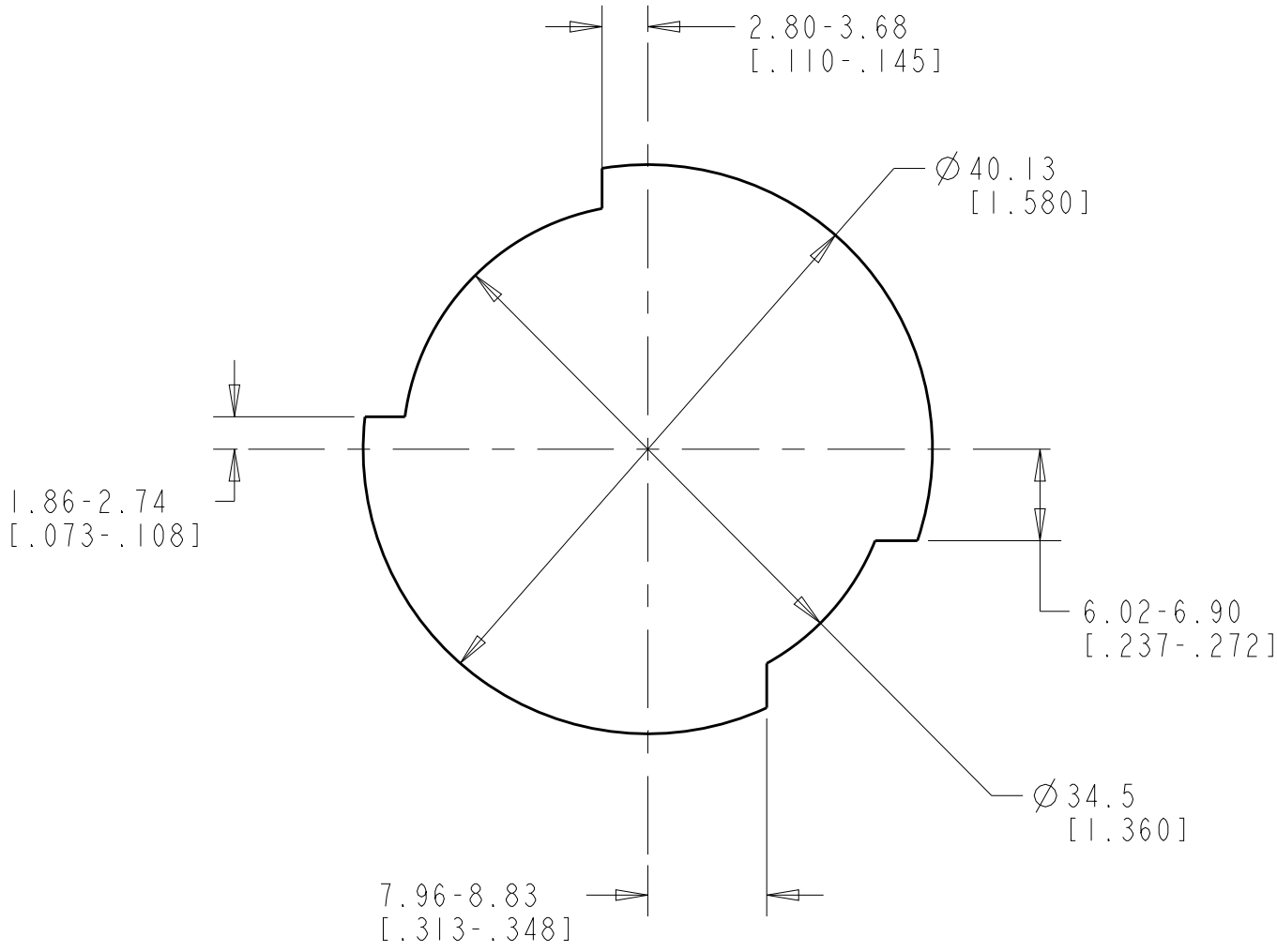


REVISIONS					
P	LTR	DESCRIPTION	DATE	DWN	APVD
	E	REVISED PER ECR-17-015775	03NOV2017	BDA	KR

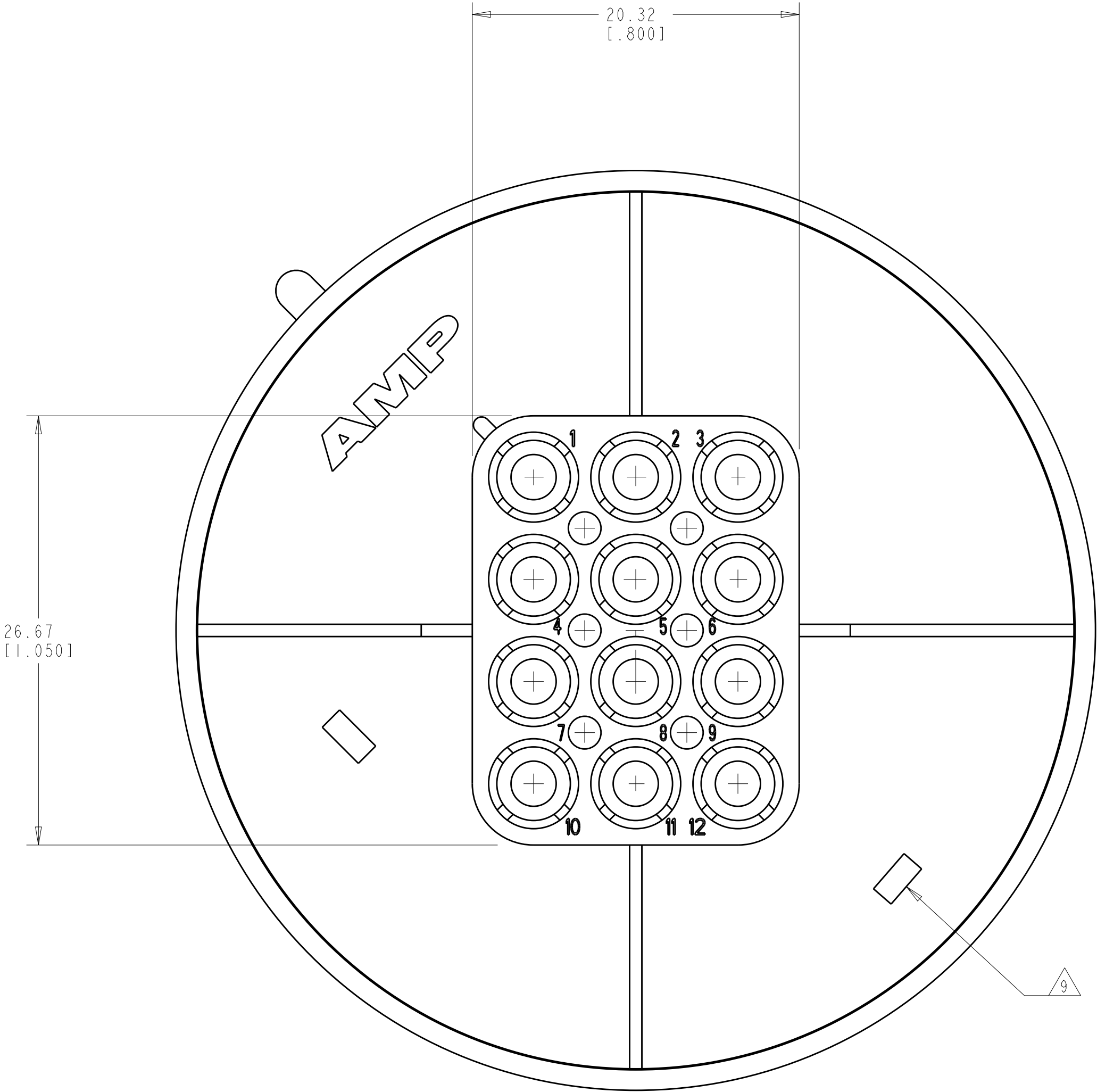
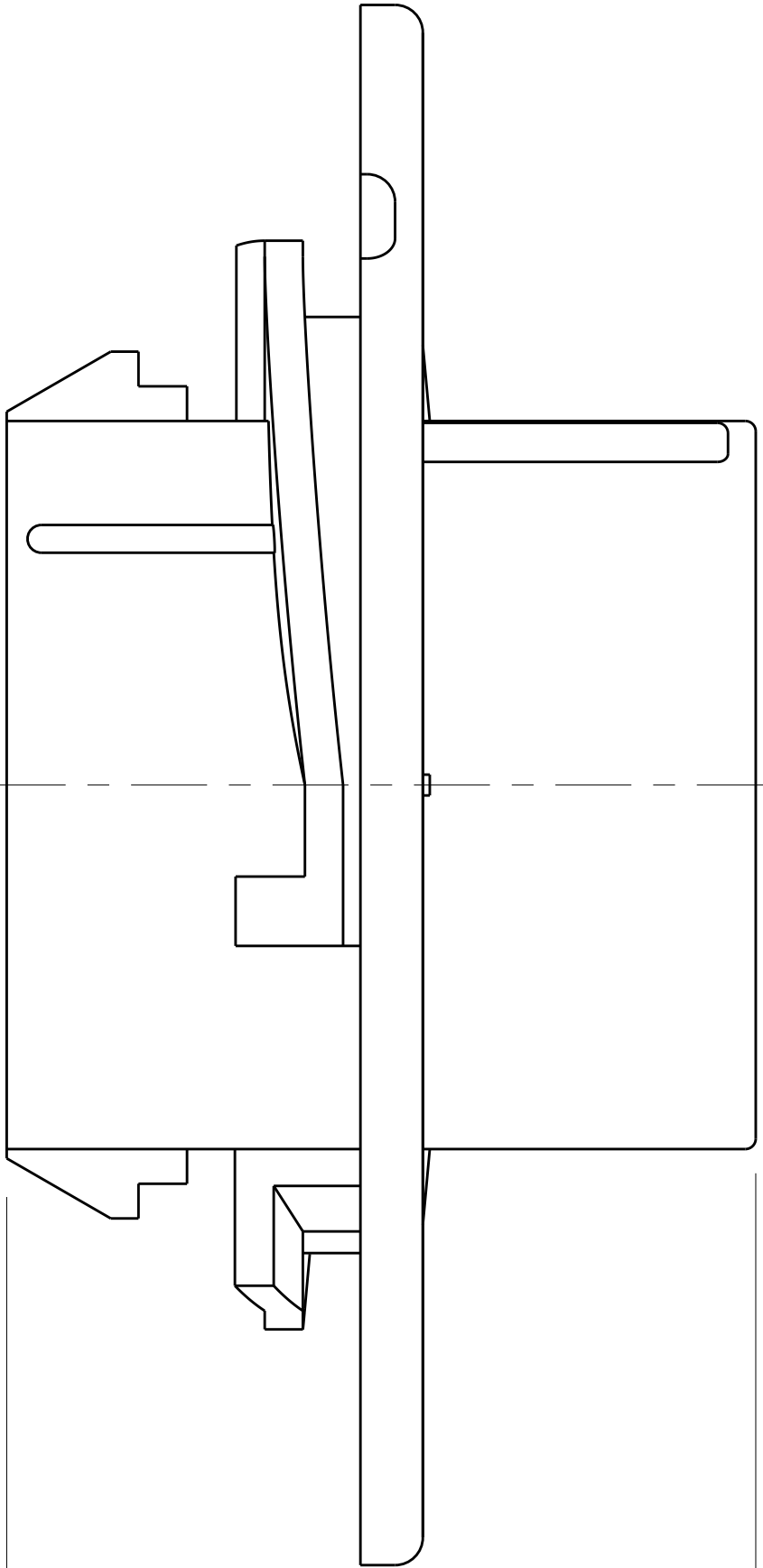
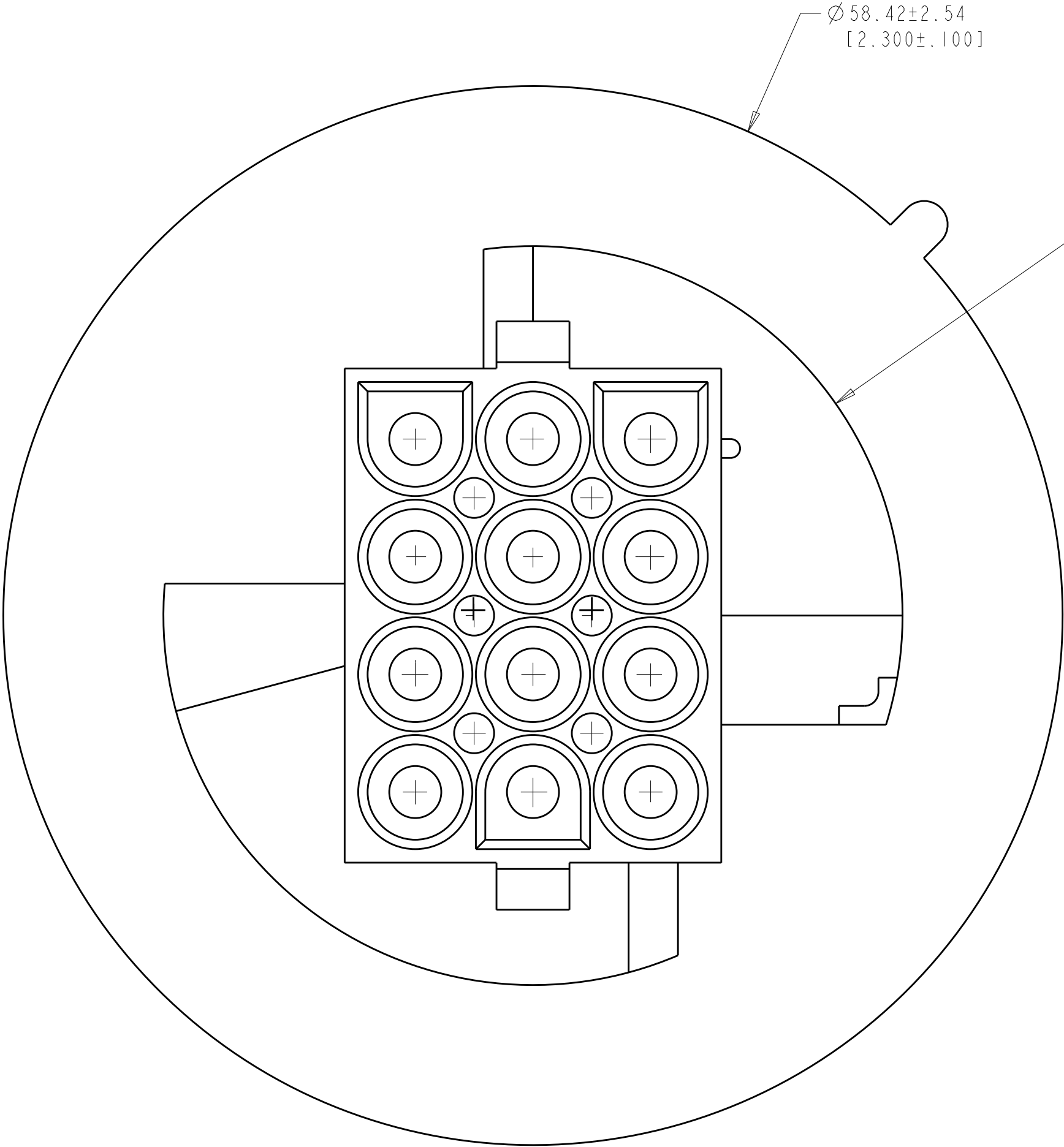


3-DIMENSIONAL MODEL
SCALE 2:1



RECOMMENDED CUT OUT
SCALE 2:1

1. MATES WITH APPROPRIATE UNIVERSAL MATE-N-LOK™ PLUG.
 2. RECOMMENDED PANEL THICKNESS 0.76 - 2.29 [.030 - .090].
 3. PANEL MUST BE PUNCHED SO THAT THE HOUSING ENTERS THE PANEL IN THE SAME DIRECTION AS THE PUNCH.
 4. DIMENSIONS SHOWN REPRESENT PRODUCT IN DRY, AS MOLDED, CONDITION. ADDITIONAL 2% GROWTH DUE TO SUBSEQUENT MOISTURE ABSORPTION MAY OCCUR AND SHOULD BE ACCOUNTED FOR.
 5. FLAMMABILITY V-2 FOR THICKNESS 0.38mm, 0.75mm, 1.5mm AND 3.0mm PER IEC 60695-11-10.
 6. GLOW-WIRE FLAMMABILITY (GWF1) 800°C FOR THICKNESS 0.38mm AND 0.75mm PER IEC 60695-2-12.
 7. GLOW-WIRE FLAMMABILITY (GWF1) 960°C FOR THICKNESS 1.5mm AND 3.0mm PER IEC 60695-2-12.
 8. GLOW-WIRE IGNITION (GWIT) 825°C FOR THICKNESS 0.38mm 0.75mm, 1.5mm, AND 3.0mm PER IEC 60695-2-13.
9. UL AND CSA LOGOS LOCATED APPROXIMATELY AS SHOWN



NATURAL	1586854-1
COLOR	PART NUMBER

THIS DRAWING IS A CONTROLLED DOCUMENT.		DWN K. WHITAKER 18JUL2007	TE Connectivity	
DIMENSIONS: mm [INCHES]		CHK D. COLEY 18JUL2007		
	TOLERANCES UNLESS OTHERWISE SPECIFIED:	APVD D. COLEY 18JUL2007	NAME	
		PRODUCT SPEC	CAP.	
		APPLICATION SPEC	12 CIRCUIT,	
		FINISH	UNIVERSAL MATE-N-LOK(TM), SPECIAL	
MATERIAL NYLON, UL 94V-2, NATURAL	-	WEIGHT	SIZE A1	RESTRICTED TO
CUSTOMER DRAWING		00779	00779	00779
SCALE 4:1		SHEET 1 OF 1	REV E	