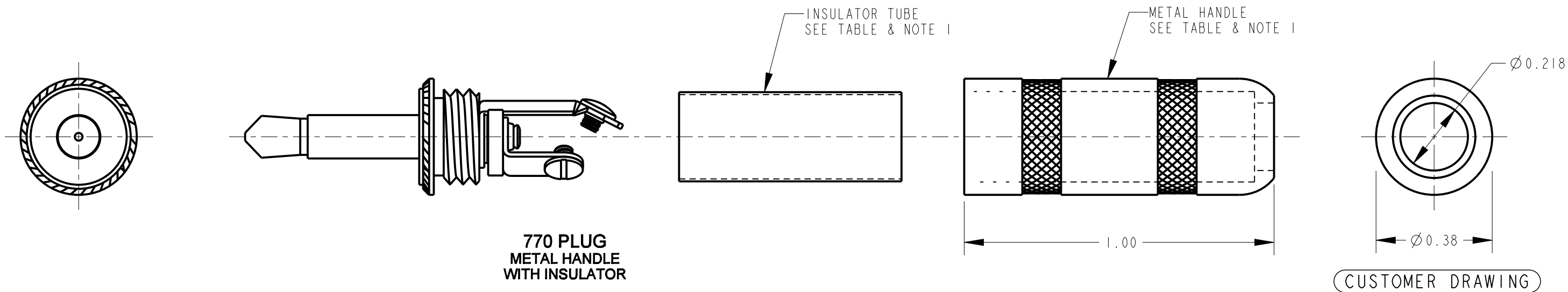


PART NUMBER	HANDLE - MATERIAL AND FINISH
740	THERMOPLASTIC, BLACK
745	THERMOPLASTIC, RED
770	BRASS, NICKEL PLATED WITH MYLAR INSULATOR TUBE



NOTES:

- SCREWS, HANDLE AND INSULATOR SHIPPED UNASSEMBLED.
- MATES WITH SWITCHCRAFT #41 JACK.
- MATERIALS:
PLUG BODY - BRASS, NICKEL PLATED
TIP ROD - BRASS, NICKEL PLATED
PLUG INSULATORS - PHENOLIC & MYLAR
TERMINALS - BRASS, TIN PLATED
SCREWS - BRASS, NICKEL PLATED
HANDLE AND INSULATOR TUBE - SEE TABLE
- THESE PRODUCTS ARE RoHS COMPLIANT.

					★ STAR SYMBOL DENOTES CRITICAL DIMENSION	THIS DRAWING DESCRIBES A DESIGN CONSIDERED PROPRIETARY IN NATURE, DEVELOPED AND MANUFACTURED BY SWITCHCRAFT INC. AND IS RELEASED ON A CONFIDENTIAL BASIS FOR IDENTIFICATION PURPOSES ONLY.										
					UNLESS OTHERWISE SPECIFIED 1. ALL DIMENSIONS IN INCHES - TWO PLACE DECIMALS ±0.01 - THREE PLACE DECIMALS ±0.005 - ANGLES ±1° - ALL DIA. CONCENTRIC WITHIN 0.005 T.I.R. 2. FEATURES ON THE SAME CENTERLINE MUST BE ALIGNED WITHIN ±0.002 3. REMOVE ALL BURRS	SIZE	WIDTH		MULT		LBS/M		TEMPER			
						FINISH SPEC No.					MATERIAL SPEC No.					
						FIRST USED ON			SCALE 3:1			Switchcraft®				
D	27210	10-18-13	TO	TJK		DATE DRAWN 19-May-64	BY JRT	CHKD CJD 7-6-64		APVD LG 7-7-64						
C	26777	5-23-11	TJK	TJK		SHEET OF										
REV	ECO NUMBER	DATE	BY	APVD	NAME TINI PLUG, 2 CONDUCTOR WITH SCREW TERMINALS, RoHS					PART No. 740 745 770					REV D	
REVISIONS					DO NOT SCALE DRAWING											

Mouser Electronics

Authorized Distributor

Click to View Pricing, Inventory, Delivery & Lifecycle Information:

Switchcraft:

[745](#) [740](#) [770](#)