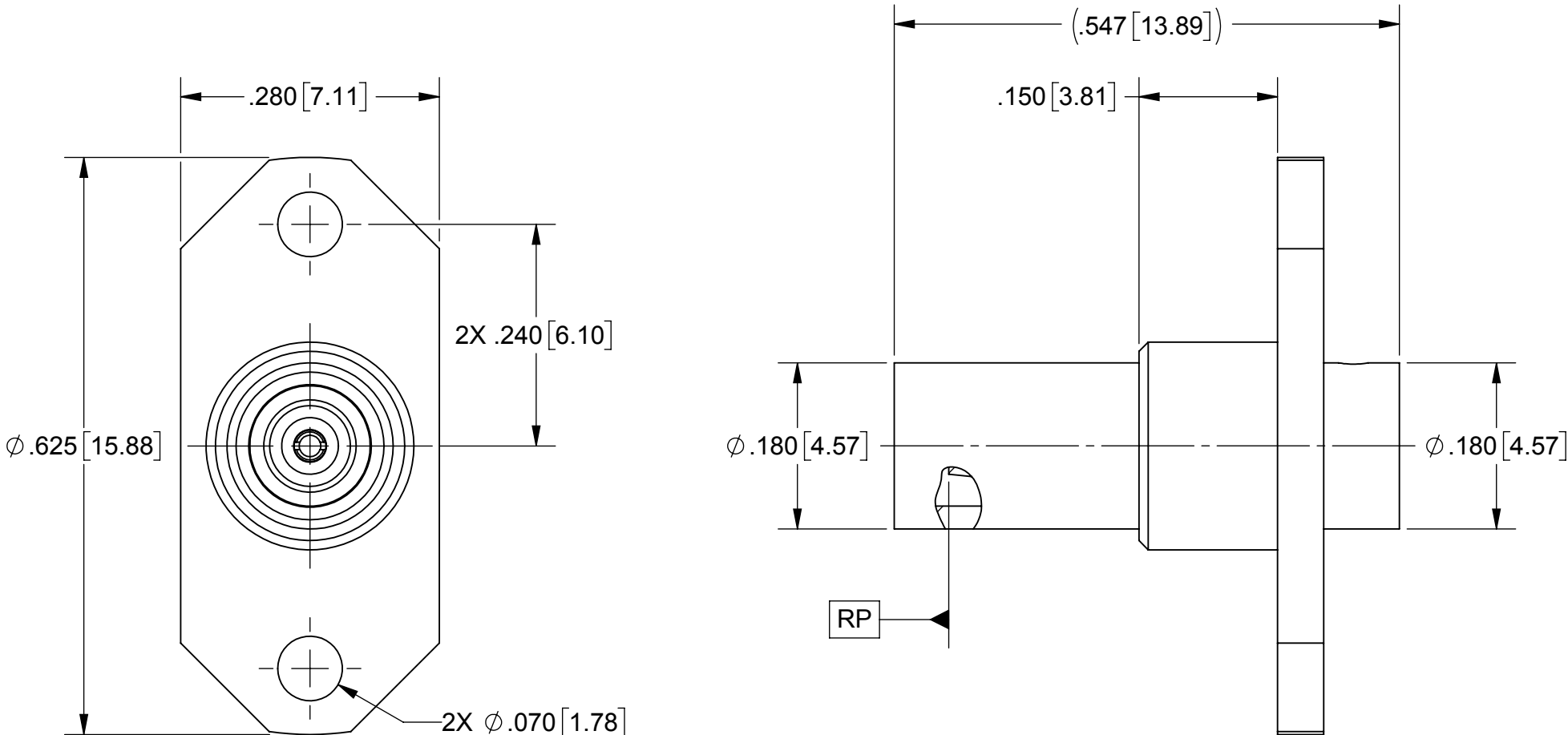


ROHS COMPLIANT

PRODUCT DATA DRAWING

REVISION HISTORY			
REV	DESCRIPTION	DATE	APPROVED
-	DCN 43277	04/17	MAL



MATERIAL:

BODY: STAINLESS STEEL PER AMS-5640,
ALLOY UNS S30300, TYPE 1

CONTACT: BERYLLIUM COPPER PER ASTM B196,
ALLOY No. UNS C17300, TD04

REAR BODY: BRASS PER ASTM B16, ALLOY UNS No. C36000

INSULATOR: PTFE PER ASTM D1710, TYPE I, GRADE 1, CLASS B


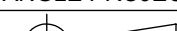
FINISH:

BODY : PASSIVATED PER AMS-2700

REAR BODY &
CONTACT: GOLD PER ASTM B488, TYPE II,
CODE C, CLASS 1.27, OVER NICKEL
PER AMS-QQ-N-290, CLASS 1, .00005" MIN.

PERFORMANCE:

IMPEDANCE: 50 OHMS
FREQ. RANGE: DC TO 18.0 GHz.

MATERIAL:	SEE NOTES	<div>DIMENSIONS ARE IN INCHES TOLERANCES:</div> <div>FRACTIONAL: $\pm 1/64$ ANGULAR: $X^\circ \pm 1'0''$ $X^\circ X' \pm 15'$</div> <div>DECIMAL: $.X \pm .030$ $.XX \pm .010$ $.XXX \pm .005$</div> <div>INTERPRET DIMENSIONS AND TOLERANCES PER ASME Y14.5M - 1994</div>	<div>UNLESS OTHERWISE SPECIFIED</div> <div>1) ALL DIMENSIONS ARE IN INCHES (MILLIMETERS) 2) ALL DIMENSIONS ARE AFTER PLATING. 3) BREAK CORNERS & EDGES .005 R. MAX. 4) CHAM. 1ST & LAST THREADS. 5) SURFACE ROUGHNESS 63 MIL-STD-10. 6) DIA. 'S ON COMMON CENTERS TO BE CONCENTRIC WITHIN .005 T.I.R. 7) REMOVE ALL BURRS</div>	<div> 2400 Centrepark West Drive, Suite 100 West Palm Beach, FL 33409</div>		
FINISH:	SEE NOTES			<div>TITLE:</div> <div>BMZ FEMALE TWO HOLE FLANGE MOUNT FOR Ø.141 CABLE</div>		
SURFACE AREA:	N/A					
<div>PROPRIETARY</div> <div>THE INFORMATION CONTAINED IN THIS DRAWING IS THE SOLE PROPERTY OF SV MICROWAVE, INC. ANY REPRODUCTION IN PART OR AS A WHOLE WITHOUT THE WRITTEN PERMISSION OF SV MICROWAVE, INC IS PROHIBITED.</div>	<div>THIRD ANGLE PROJECTION</div> <div></div>			<div>DRAWN:</div> <div>VB 04/03/17</div> <div>CHECKED:</div> <div>MAL 04/03/17</div> <div>APPROVED:</div> <div>MAL 04/03/17</div>	<div>SIZE</div> <div>B</div> <div>CAGE CODE</div> <div>95077</div> <div>DWG. NO.</div> <div>SF8921-60029</div> <div>SCALE: 4:1</div>	<div>SHEET 1 OF 1</div>