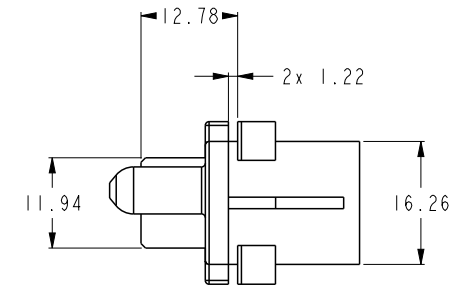
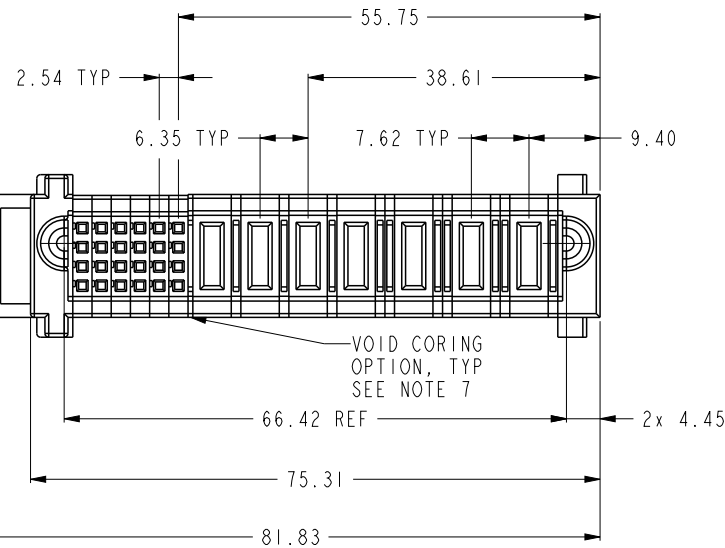
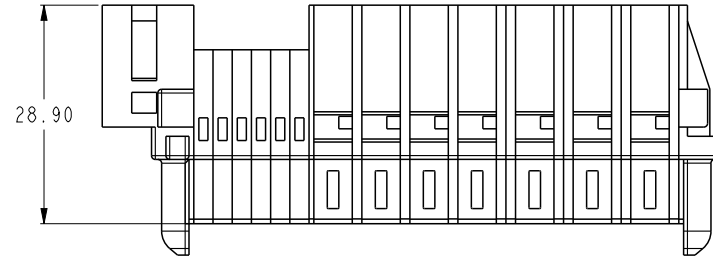
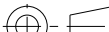




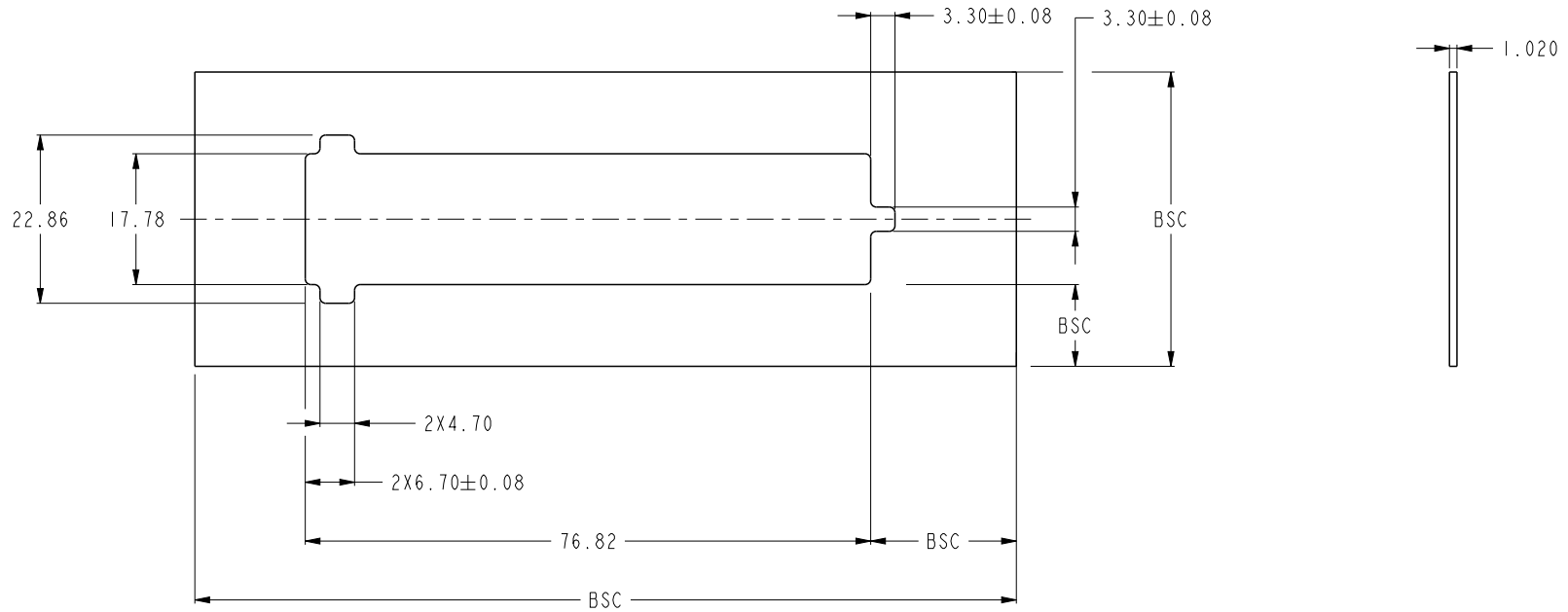
PART NUMBER	ROW	E	SIGNAL							POWER							E
			6	5	4	3	2	1	P7	P6	P5	P4	P3	P2	P1		
	D		S	S	S	S	S	S	STD	STD	STD	STD	FM	STD	STD		
	C		S	S	S	S	S	S									
	B		S	S	S	S	S	S									
	A		S	S	S	S	S	S									

CONTACT WIRE TABLE	
CONTACT PITCH	WIRE GAUGE
7.62	8-9
6.35	10-11
5.08	12-14
2.54	22-26



CONTACT TABLE	
CODE	DESCRIPTION
STD	STANDARD POWER CONTACT
FM	FIRST MATE LAST BREAK POWER CONTACT
S	SIGNAL CONTACT

spec ref		*		dr	Rainbow Zhan	2015/03/06	projection 	mm 	size	A4	scale	1:1		
tolerance std	TOLERANCES UNLESS OTHERWISE SPECIFIED			eng	Rainbow Zhan	2016/06/17			ecn no	-				
				chr	Cheng-Ling Tao	2016/06/17								
				appr	Pei-Ming Zheng	2016/06/17							product family	PwrBlade+
surface	- 	linear	0.X	±0.50	Amphenol FCI	title	3ACP+4HP+24S STL			dwg no	10129443-012		rev	A
			0.XX	±0.25										
			0.XXX	±0.10										
		angular	0°	±2°										



NOTES

1. DIMENSIONS AND TOLERANCE ARE IN ACCORDANCE WITH
ASME Y14.5M 1994 UNLESS OTHERWISE SPECIFIED.

2. MATERIAL: HIGH TEMPERATURE THERMOPLASTIC UL94V-0.

3. APPLICABLE COMPONENTS

- a) APPLICABLE HIGH POWER CRIMP CONTACT: 10135689-*
- b) APPLICABLE LOW POWER CRIMP CONTACT: 10135690-*
- c) APPLICABLE CONTACT SECONDARY LOCK FOR HIGH POWER: 10073097-DGC004LF
- d) APPLICABLE SIGNAL CONTACT: 76347-DGC302LF
- e) APPLICABLE PANEL LOCKING CAP: 10089267-*

4. PRODUCT SPEC: GS-12-1267

5. APPLICATION SPEC: GS-20-0426

6. CRIMPING APPLICATION SPEC: GS-20-0435

7. THE VOID CORING IN BETWEEN POWER MODULES, SIGNAL MODULES AND END MODULES ARE OPTIONAL AND THE SHAPE
MAY BE DIFFERENT FOR OPTIMIZE THE MOLDING PROCESS. THE VOID CORING WILL NOT EFFECT TO PRODUCT FUNCTION.

spec ref	*			dr	Rainbow Zhan	2015/03/06	projection 	mm 	size	A4	scale	1:1
tolerance std	TOLERANCES UNLESS OTHERWISE SPECIFIED			eng	Rainbow Zhan	2016/06/17			ecn no	-		
				chr	Cheng-Ling Tao	2016/06/17						
				appr	Pei-Ming Zheng	2016/06/17						
surface 	linear	0.X	±0.50	Amphenol FCI	title 3ACP+4HP+24S STL PwrBlade+ Cable Receptacle Housing				dwg no	10129443-012		rev A
		0.XX	±0.25									
		0.XXX	±0.10									
	angular	0°	±2°	www.fci.com	cat. no.		-		Product - Customer Drw		sheet 2 of 2	