

4

3

2

1

THIS DRAWING IS UNPUBLISHED.

RELEASED FOR PUBLICATION

© COPYRIGHT

ALL RIGHTS RESERVED.

LOC

DIST


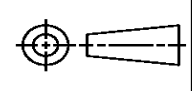
REVISIONS

P	LTR	DESCRIPTION	DATE	DWN	APVD
	G1	ECR-14-003070	01MAR2014	GK	HMR

REPLACED BY OCEAN STYLE APPLICATOR PART
NUMBER 2151153-1

FOR REPLACEMENT PARTS FOR APPLICATOR 1426244
REFER TO ADDITIONAL PAGE(S). SPARE PARTS KIT (IF LISTED)
WILL REMAIN AVAILABLE.


THE REPLACEMENT OCEAN STYLE APPLICATOR HAS THE
SAME TERMINATOR/PRESS INTERFACE AS APPLICATOR
1426244

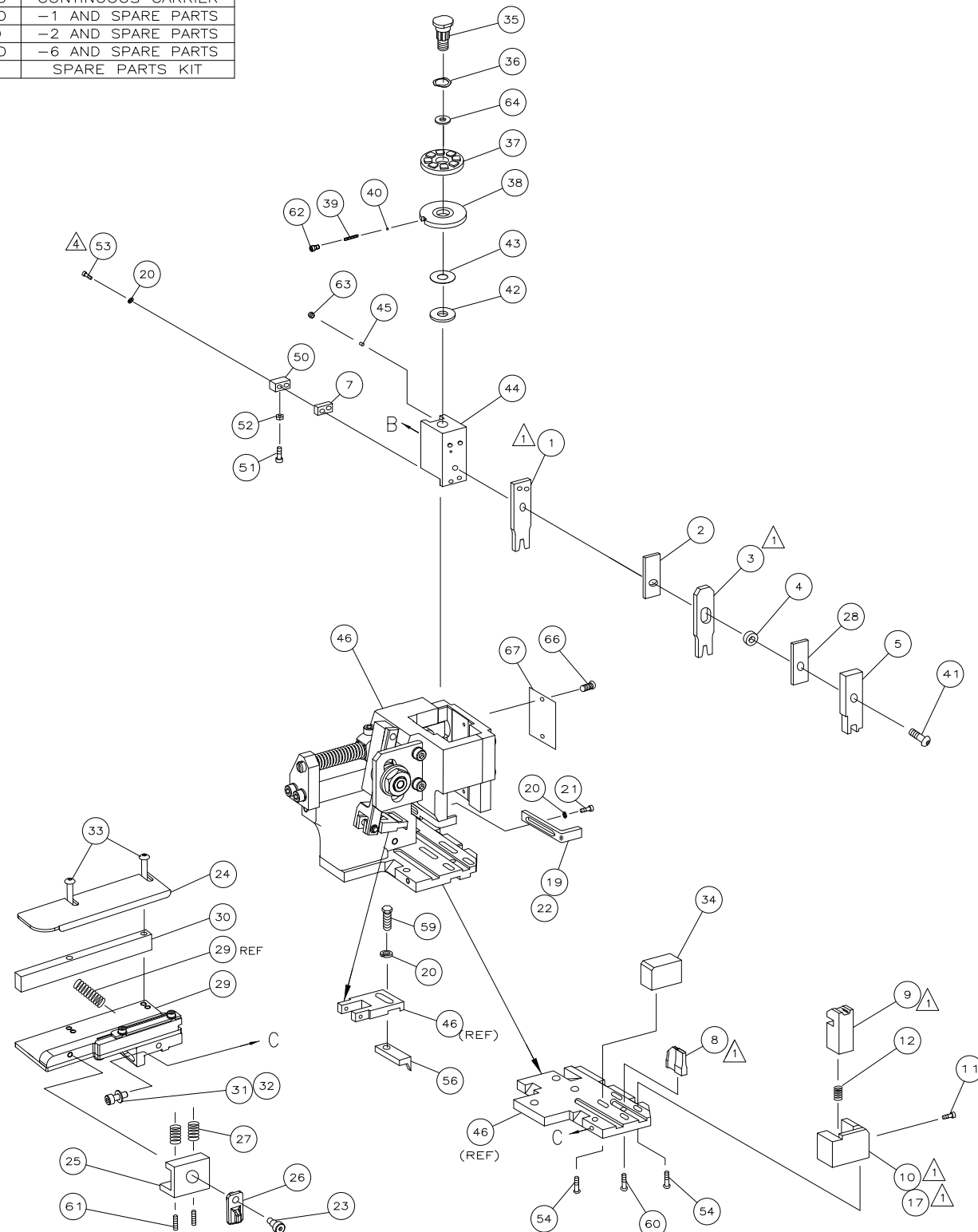
THIS DRAWING IS A CONTROLLED DOCUMENT.		DWN GOPALAKRISHNA HV		 TE Connectivity			
DIMENSIONS:		CHK RAGHAVENDRA					
		APVD RAGHAVENDRA		NAME SIDE FEED HD-I APPLICATOR			
		PRODUCT SPEC					
		APPLICATION SPEC					
MATERIAL		WEIGHT		SIZE A3	CAGE CODE	DRAWING NO C- 1426244	RESTRICTED TO
FINISH		CUSTOMER DRAWING		SCALE		SHEET 1 OF 2	REV G1

	—	1	1	1	1	1	1	1426244	PRINT, APPLICATOR LOG SHEET	72
	—	1	1	1	1	1	1	1338705-1	DOCUMENTATION PACKAGE	71
										70
										69
										68
	—	1	1	1	1	1	1	461264-1	PLATE, IDENTIFICATION	67
	—	2	2	2	2	2	2	21017-2	SCR,DRIVE(#2x.19)ID PLATE	66
										65
	—	1	1	1	1	1	1	986950-1	WASHER, FLAT PRECISION	64
	—	1	1	1	1	1	1	3-18031-0	SCR,SKT SET(M6X6)RAM	63
	—	1	1	1	1	1	1	18023-9	SCR,SHC(M4X6)INS_DISC	62
	—	2	2	2	2	2	2	2-18032-5	SCR,SET(M5X20)DRAG	61
	—	1	1	1	1	1	1	18024-7	SCR,BHC(M4X10)ANVIL	60
	—	1	1	1	1	1	1	5-18022-2	SCR,HEX(M4X8)FEED FINGER	59
										58
										57
	—	1	1	1	1	1	1	1338685-1	PAWL, FEED	56
										55
4	—	4	4	4	4	4	4	18024-8	SCR,BHC(M4x12)SHEAR HOLDER	54
	—	2	2	2	2	2	2	1-18023-3	SCR,SHC(M4x16)TERM_HLD_DWN	53
	—	1	1	1	1	1	1	18030-1	NUT,HEX(M3)HOLD_DOWN	52
	—	1	1	1	1	1	1	811242-5	BUMPER, HOLDDOWN	51
	—	1	1	1	1	1	1	690753-2	SPACER, TONKER	50
	—	1	1	1	1	1	1	18024-3	SCR,BHC(M3X10)CAM	49
	—	—	1	—	—	1	—	1338675-1	CAM, PRE FEED 30 & 40 mm ST	48
	—	1	—	1	1	—	1	1338676-1	CAM, POST FEED 30 & 40 mm ST	47
	—	1	1	1	1	1	1	1320999-3	APPLICATOR BASIC SUBASSY	46
	—	1	1	1	1	1	1	690191-1	PLUG, NYLON	45
	—	1	1	1	1	1	1	1338660-1	RAM	44
	—	1	1	1	1	1	1	690125-1	WASHER, LAMINATED	43
	—	1	1	1	1	1	1	690124-1	WASHER, RAM	42
	—	1	1	1	1	1	1	2-18024-6	SCR,BHC(M8X25)RAM	41
	—	1	1	1	1	1	1	23241-1	BALL, STEEL	40
	—	1	1	1	1	1	1	2-22278-7	SPRING, COMPRESSION	39
	—	1	1	1	1	1	1	1320922-1	DISC, INSULATION	38
	—	1	1	1	1	1	1	354777-1	WIRE DISC, PLASTIC	37
	—	1	1	1	1	1	1	22480-5	WASHER, SPRING	36
	—	1	1	1	1	1	1	690212-1	POST, RAM	35
	—	1	1	1	1	1	1	1320934-1	SUPPORT, TERMINAL	34
	—	2	2	2	2	2	2	1-18024-0	SCR,BHC(M4X20)STRIP GUIDE	33
	—	1	1	1	1	1	1	18027-2	WASHER, FLAT(M4)	32
	—	1	1	1	1	1	1	1-18023-2	SCR,SKT CAP(M4X12)MOUNT BLOCK	31
	—	1	1	1	1	1	1	1320908-4	SPACER, STRIP GUIDE	30
	—	1	1	1	1	1	1	1633073-1	STRIP GUIDE PLATE ASSY	29
	—	1	1	1	1	1	1	1-455888-0	SPACER, FRONT SHEAR DEP	28
	—	2	2	2	2	2	2	1-22284-0	SPRING, DRAG	27
	—	1	1	1	1	1	1	356835-1	LEVER, DRAG RELEASE	26
	—	1	1	1	1	1	1	240792-1	DRAG, TERMINAL	25
	—	1	1	1	1	1	1	1320928-1	PLATE, STRIP GUIDE	24
	—	1	1	1	1	1	1	980371-4	SCR,SHC SHLD	23
	—	1	—	1	1	—	1	690472-2	STRIPPER	22
	—	1	1	1	1	1	1	1-18023-1	SCR,SHC(M4X10)STRIPPER	21
	—	4	4	4	4	4	4	18025-2	WASHER,LOCK(M4)STRIPPER	20
	—	—	1	—	—	1	—	690472-1	STRIPPER	19
1	—	1	—	—	1	—	—	1338684-1	HOLDER, SHEAR, FRONT (NO-CUT)	18
										17
										16
										15
										14
										13
	—	1	1	1	1	1	1	3-22280-3	SPRING, SHEAR	12
	—	1	1	1	1	1	1	356885-4	STOP, SHEAR	11
}	—	—	1	1	—	1	1	1320921-1	HOLDER, SHEAR, FRONT (CUT)	10
	—	1	1	1	1	1	1	462006-1	SHEAR, FLOAT (FRONT)	9
}	1	2	2	2	1	1	1	3-1333201-2	ANVIL	8
	—	1	1	1	1	1	1	240641-1	SPACER, DEPRESSOR (REAR)	7
										6
	—	1	1	1	1	1	1	2-455889-0	DEPRESSOR, SHEAR (FRONT)	5
1	—	1	1	1	1	1	1	238011-8	SPACER, BLOCK CRIMPER	4
	1	2	2	2	1	1	1	8-655830-9	CRIMPER, INSULATION	3
1	—	1	1	1	1	1	1	455888-3	SPACER, CRIMPER	2
	1	2	2	2	1	1	1	5-456402-5	CRIMPER, WIRE	1

WIRE SIZE mm ² AWG	CRIMP HEIGHT	PIN PN AND LENGTH [IN]
0.50mm ²	1 ±0.03 [.039 ±0.01 IN]	3-354779-9 [.3185]
0.35mm ²	0.92 ±0.03 [.036 ±0.01 IN]	4-354779-5 [.3215]
0.22mm ²	0.87 ±0.03 [.034 ±0.01 IN]	4-354779-9 [.3235]

SET UP GAGE 458637-3	LAYOUT L1426244	
-------------------------	--------------------	--

- 
 1. RECOMMENDED SPARE PARTS.
 2. GREASE RAM, CAM, CAM FOLLOWER AND FEED ROD LIGHTLY.
 3. LUBRICATE DAILY PER THE APPLICATOR INSTRUCTION SHEET SUPPLIED WITH THE APPLICATOR.
 4. CUT TO LENGTH AT ASSY.
 5. THIS APPLICATOR HAS BEEN DESIGNED TO APPLY WIRES WITH THIN-WALL (FLR) INSULATION.



VIEW B ROTATED 180°

