

**24 Pole
with Ground**
PROTECTION
IP65
RATING
E307105
CE

**Component
Parts**

Pre-Assembled Units

Covers

Bulkhead Housing



29044

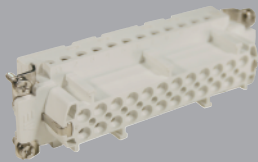


403040

FEMALE

Hood

Insert



29024



29051
29051M



403045
403045M



29652

**Surface Mount
Housing**



1 Hole
29058
29058M

2 Hole
29059
29059M



1 Hole
403046
403046M

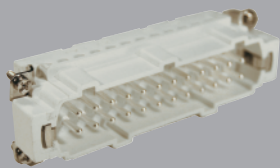
2 Hole
403048
403048M

Standard Part Numbers are
NPT threads.
Part numbers with an "M"
are metric thread.

MALE

Hood

Insert



29025



29045
29045M



403043
403043M



29655



Connectors should not be coupled
and decoupled under electrical load.

Inserts

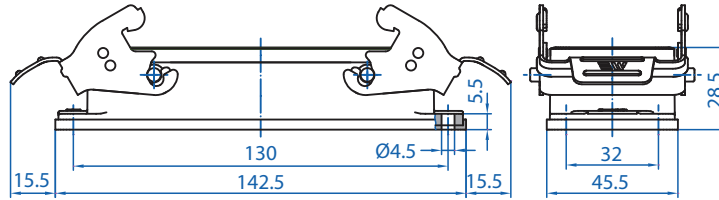
| | |
|---------------------------------|---------------------|
| Number of contacts | 24 Pole w/ ground |
| Electrical data to DIN EN61 984 | 16A 400V 6KV 3 |
| Current | 16A |
| Voltage | 400V |
| Rated Impulse Voltage | 6KV |
| Insulation Resistance | ≥10 ¹⁰ Ω |
| Temperature Range | -40 to 125°C |
| Flammability | UL94-V0 |

Contacts

| | |
|--------------------|-----------------------------|
| Screw terminal | |
| Material | Copper alloy |
| Surface plated | hard-silver |
| Contact resistance | ≤ 1m Ω |
| Wire size | 2.5mm ² / 14 AWG |
| Torque | 0.5Nm |
| Stripping Length | 7.5mm |

Metal Hoods & Housings

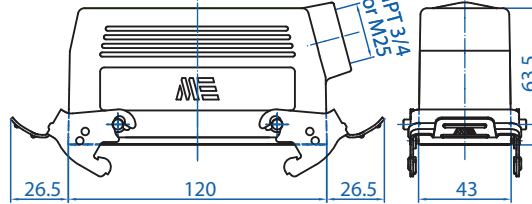
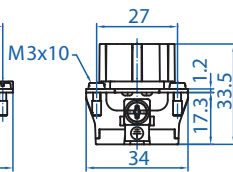
| | |
|------------------------------------|-----------------|
| Material | Aluminum |
| Surface | Powder coated |
| Seals | NBR |
| Degree of Protection Acc To | |
| DIN EN60529 for coupled connectors | IP65 |
| Thread Size | NPT 3/4" or M25 |



29044



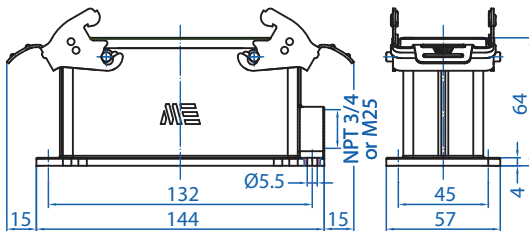
29024



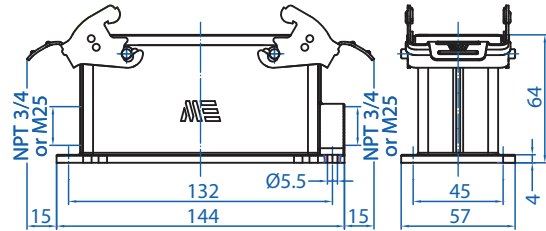
29051



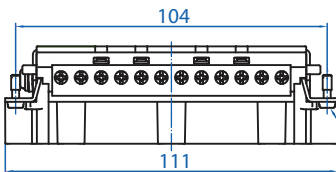
29652



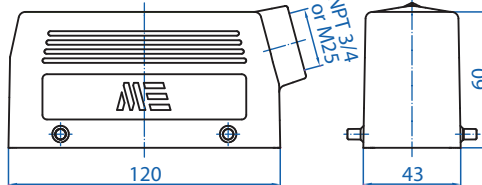
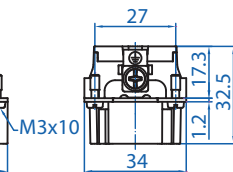
29058



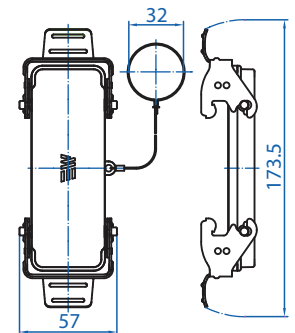
29059



29025



29045



29655



Connectors should not be coupled and decoupled under electrical load.

All dimensions are shown in millimeters.
To convert to inches divide by 25.4.