

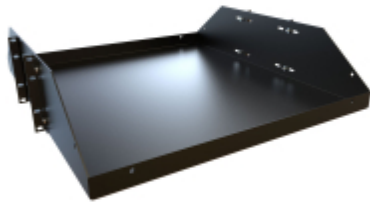


Quality Products. Service Excellence.

## Two Post Heavy Duty Battery Shelf *BRS Series*

550 lbs|250 kg Weight Capacity

### Features



- Designed for use with our Heavy Duty **DNRR** and **DRZ4** double-tapped two (2) post racks.
- Constructed of heavy duty 12 gauge steel.
- Use to support heavy chassis or batteries for DC battery array.
- Choice of 19" or 24" deep.
- Front & rear lip folded and welded for extra strength and liquid retainer.
  - For a similar design that is light duty and vented, see the **DNRM Series**.
- Finished in a rugged textured black powder paint finish.
- Tested to nearly double the suggested load rating of 550 lbs (250 kg).
- TAA Compliant
- RoHS and REACH compliant.
- Manufactured in North America.



### 19 Inch Rack Mounting Shelf

Part No.	Rack Units	Mounting Dimensions		
		Height	Width	Depth
BRS2P1919BK	3U	5.25	19.00	19.00
BRS2P1924BK	3U	5.25	19.00	24.00

### 23 Inch Rack Mounting Shelf

Part No.	Rack Units	Mounting Dimensions		
		Height	Width	Depth
BRS2P2319BK	3U	5.25	23.00	19.00
BRS2P2324BK	3U	5.25	23.00	24.00

*Data subject to change without notice*

© 2020. Hammond Manufacturing Ltd. All rights reserved.

