

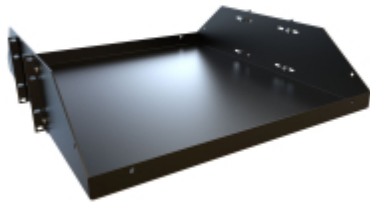


Quality Products. Service Excellence.

Two Post Heavy Duty Battery Shelf *BRS Series*

550 lbs|250 kg Weight Capacity

Features



- Designed for use with our Heavy Duty **DNRR** and **DRZ4** double-tapped two (2) post racks.
- Constructed of heavy duty 12 gauge steel.
- Use to support heavy chassis or batteries for DC battery array.
- Choice of 19" or 24" deep.
- Front & rear lip folded and welded for extra strength and liquid retainer.
 - For a similar design that is light duty and vented, see the **DNRM Series**.
- Finished in a rugged textured black powder paint finish.
- Tested to nearly double the suggested load rating of 550 lbs (250 kg).
- TAA Compliant
- RoHS and REACH compliant.
- Manufactured in North America.



19 Inch Rack Mounting Shelf

Part No.	Rack Units	Mounting Dimensions		
		Height	Width	Depth
BRS2P1919BK	3U	5.25	19.00	19.00
BRS2P1924BK	3U	5.25	19.00	24.00

23 Inch Rack Mounting Shelf

Part No.	Rack Units	Mounting Dimensions		
		Height	Width	Depth
BRS2P2319BK	3U	5.25	23.00	19.00
BRS2P2324BK	3U	5.25	23.00	24.00

Data subject to change without notice

© 2020. Hammond Manufacturing Ltd. All rights reserved.

