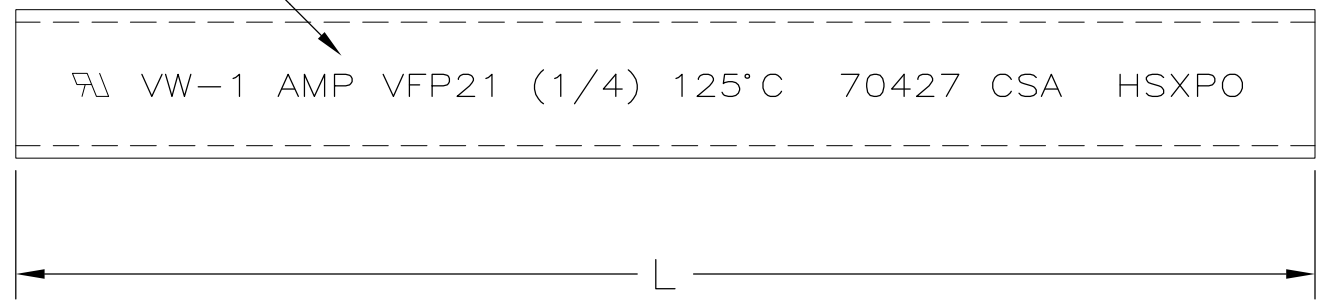
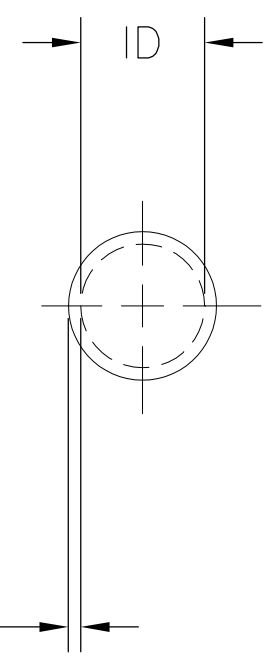


6.35 [.250] MINIMUM EXPANDED  
 3.18 [.125] MAXIMUM RECOVERED



0.64 [.025] NOMINAL WALL THICKNESS FULLY RECOVERED



REVISIONS		
LTR	DESCRIPTION	DATE
Y	REVISED PER DCR NO R060226	10/13/2006
Y1	REVISED PER ECO-09-021510	12SEP09

1. TUBING VFP21 MARKED AS SHOWN IN WHITE CHARACTERS ON SURFACE INDICATED

2. TUBING VFP21 IS UL RECOGNIZED, IS RATED 125°C [257°F] AND MEETS VW-1 FLAME TEST.

3. TUBING VFP21 IS CSA CERTIFIED AND MEETS VW-1 FLAME TEST.

4. TUBING FP21 IS UNMARKED AND MEETS REQUIREMENTS OF AMS-DTL-23053/5-106-0

5. WEIGHT PER LINEAR FOOT/304.8 mm:  
 2.54 g/.006 lbs.

6. MATERIAL: BLACK POLYOLEFIN

7. OBSOLETE PARTS: OBSOLETE CIS STREAMLINING PER D.RENAUD/D.SINISI

MARKING	NOTES	LENGTH L	PART NUMBER
4	4	60.96 m [200 ft] MINIMUM	2-603326-7
1	2 3	60.96 m [200 ft] MINIMUM	2-603326-6
7	4	31.75 ± 1.52 [1.25 ± .06]	2-603326-4
1	2 3	30.48 m [100 ft] MINIMUM	2-603326-2
4	4	30.48 m [100 ft] MINIMUM	2-603326-1
4	4	1.22 m [4 ft] MINIMUM	1-603326-1
1	2 3	25.4 ± 1.52 [1.00 ± .06]	603326-7
1	2 3	304.8 ± 3.05 [12.00 ± .12]	603326-4
1	2 3	1.22 m [4 ft] MINIMUM	603326-1

**SPECIFICATION CONTROL DRAWING**

UNLESS OTHERWISE SPECIFIED DIMENSIONS ARE IN mm. INCH DIMENSIONS ARE IN BRACKETS.  DECIMALS .XX ± .01 [.0004 in] .X ± .1 [.004 in]  ANGLES .X ± 0.5 DEG	DRAWN UNGUYEN	DATE 10/13/2006	Tyco Electronics Corporation 300 Constitution Drive Menlo Park, CA, USA 94025 		
	RPN			TITLE AMPSULATION VFP21 AND FP21 1/4 INCH ID, BLACK	
	CAD NAME R060226		THIRD ANGLE PROJECTION	SIZE B	CODE IDENT. NO. 06090
DO NOT SCALE THIS DRAWING			SHEET 1 OF 1		